



Warrenpoint Front Shore Public Realm Public Consultation Presentation

April 2021



Comhairle Ceantair
**an Iúir, Mhúrn
agus an Dúin**

**Newry, Mourne
and Down**
District Council



Department for
Communities

An Roinn
Pobal

Department for
Communities

www.communities-ni.gov.uk

AECOM

Scheme Overview



The scheme sits within the red line boundary shown, it reaches from Marine Parade to Slieve Foy Place.

For the purposes of this presentaiton it has been divided into 5 areas, A to E.

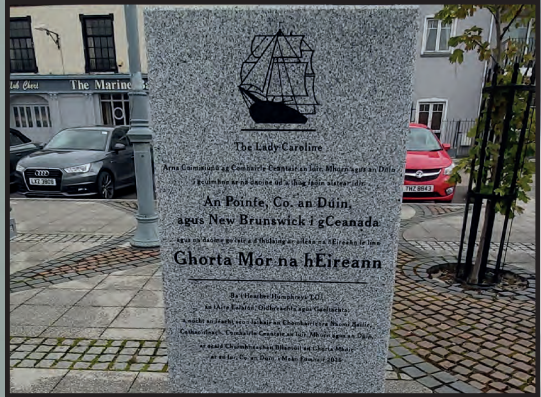
— Boundary of the proposed site

- - Presentation sheet layouts

Scale 1:1000 @A1
1:2000 @A3

A - Marine Parade

Existing Conditions



A - Marine Parade

Design Proposal



New controlled pedestrian crossing

New lighting brackets and LED street lighting

Footpath widened

Footpath widened

Picnic benches

New arrangment of furniture, lighting and planting

New raised table pedestrian crossing

Proposed 5 bar anti climb railing

Existing 5 bar anti climb railing to be painted white

Key

- Anti-climb railing
- Buff coloured surfacing
- Asphalt
- Amenity grass
- Shrub Planting
- Hedge planting
- Replica of existing entrance feature
- Proposed semi mature pine trees
- Existing pine trees retained
- Benches and seats
- Raised stone wall planters
- Tactile paving to proposed controlled pedestrian crossing
- New street light bracket
- New light
- Bins

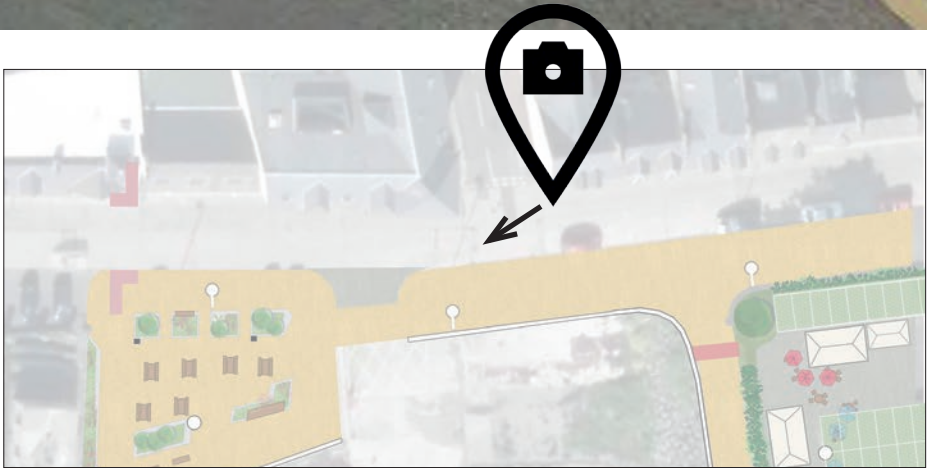
Scale 1:200 @A1
1:400 @A3

Marine Parade

Visualisation



Existing Condition



Direction of visualisation

Marine Parade

Material Palette



Picnic Benches



Benches



Anti climb Railing



Exposed Aggregate Surface



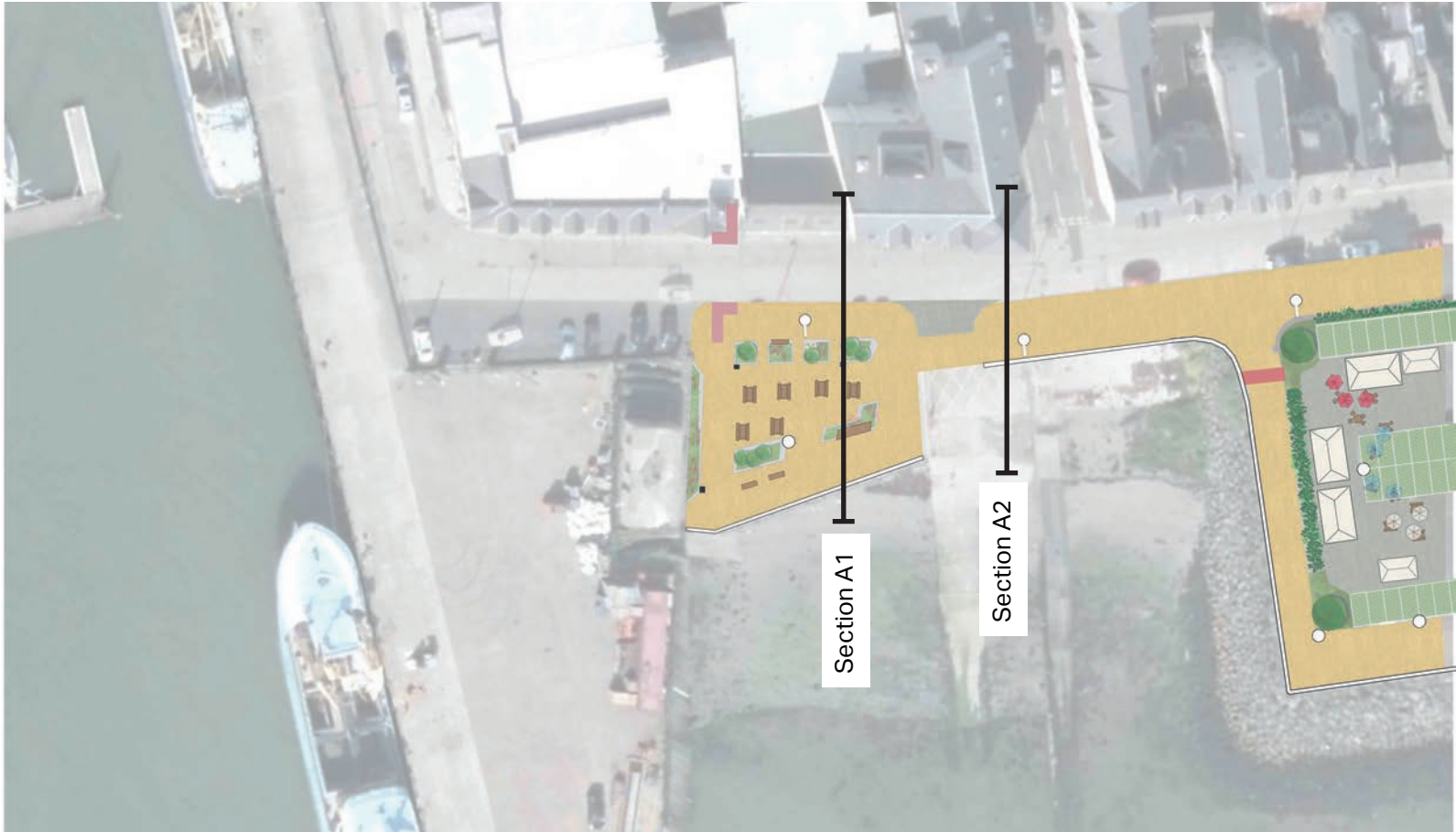
Bins



Memorial Retained

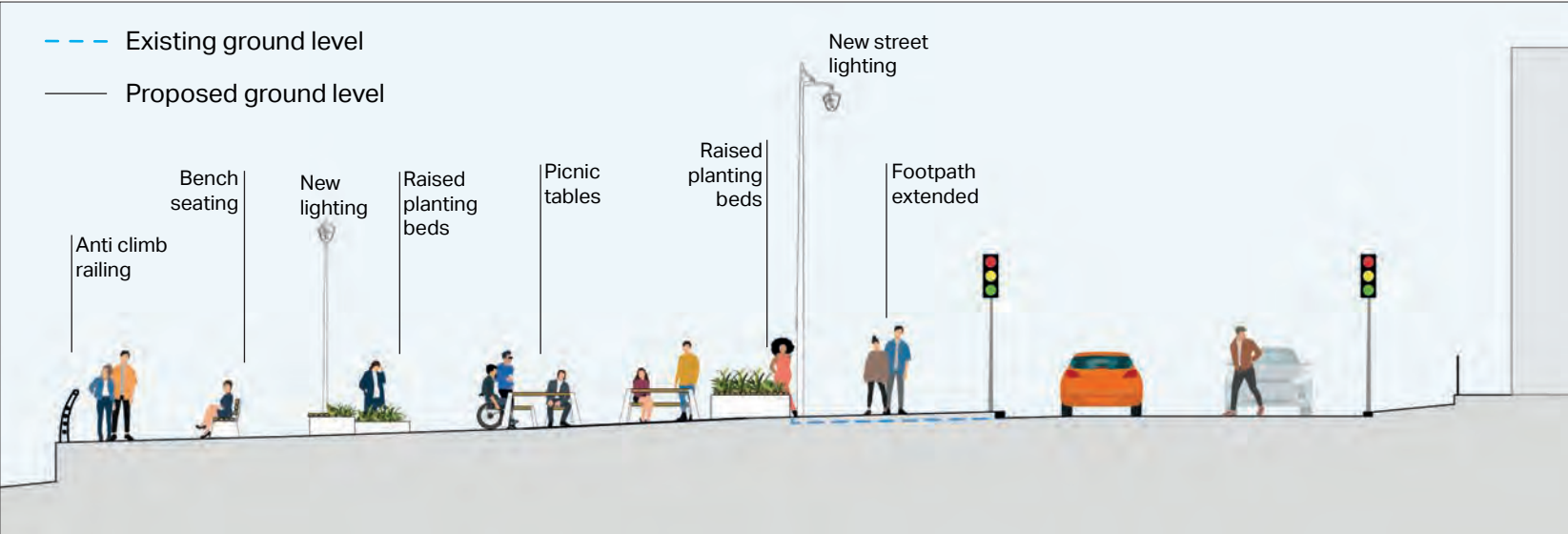


Lighting

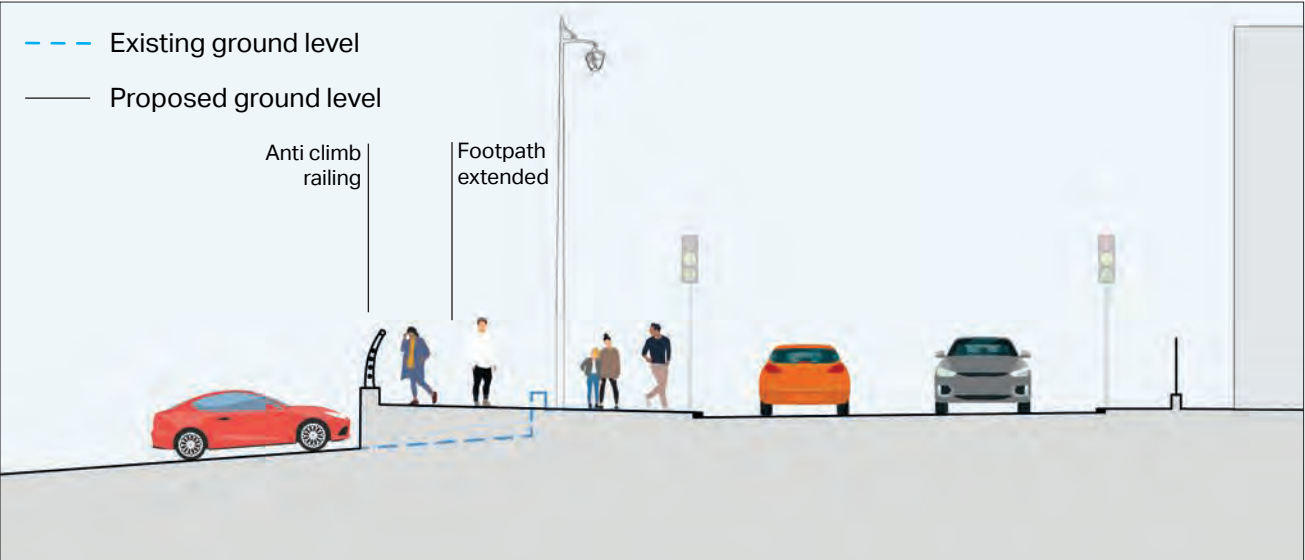


Section Location

Elevation



Section A1



Section A2

B - Car Park

Existing Conditions

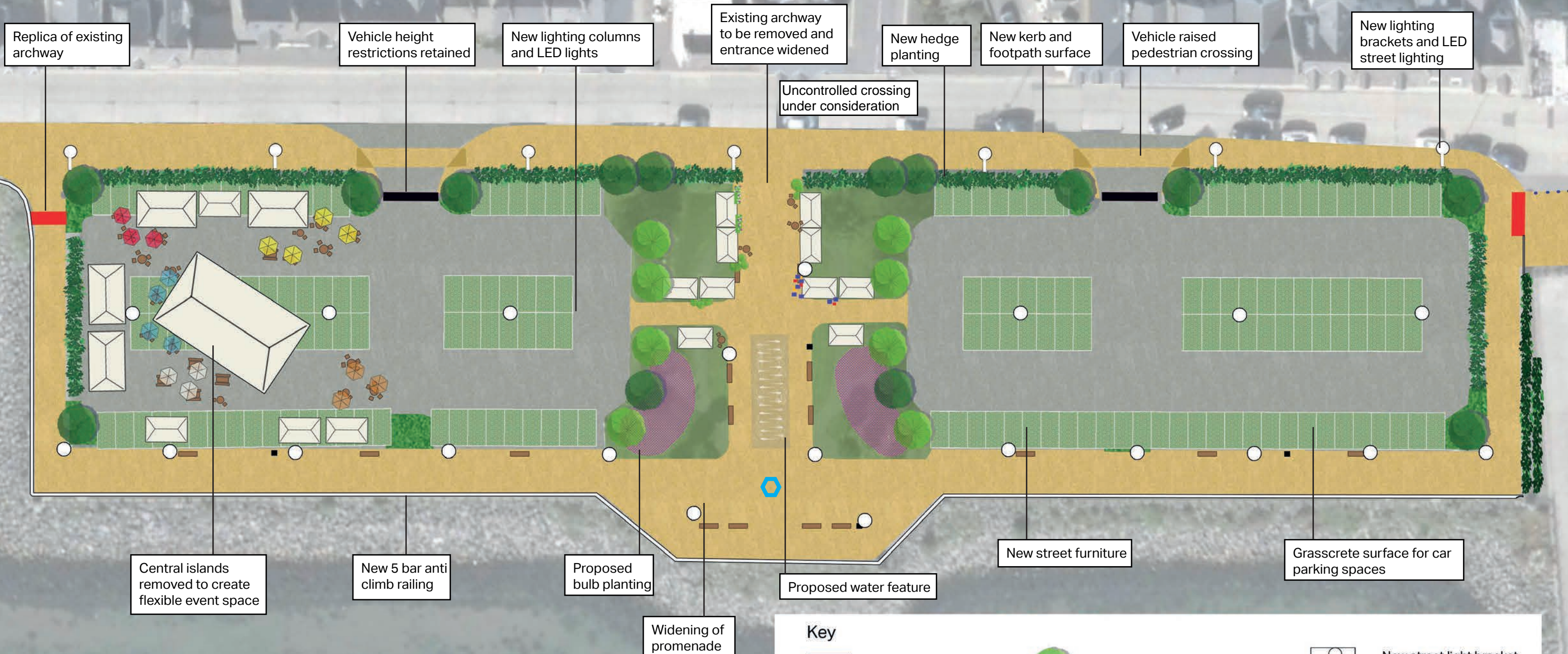


Scale 1:250 @A1
1:500 @A3



B - Car Park

Design Proposal



Scale 1:250 @A1
1:500 @A3

Key

	Amenity grass		Proposed semi mature pine trees		New street light bracket
	Bulb planting		Existing pine trees retained		New light
	Shrub Planting		Boundary hedge with wind break fencing		Height restriction barrier retained
	Buff coloured surfacing		Hedge planting		Replica of existing entrance feature
	Asphalt		Anti-climb railing painted white		Bins
	Grasscrete		New railing painted white		Benches
					Position of potential sculpture

Car Park - Open Space

Visualisation



Existing Condition



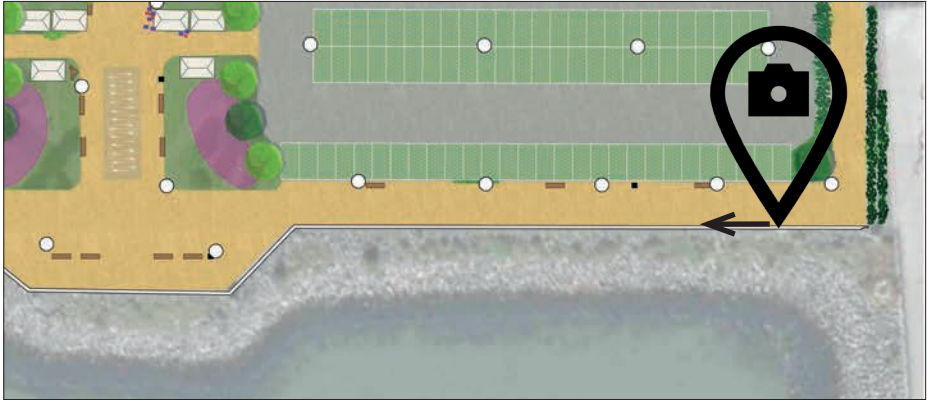
Direction of visualisation

Car Park - Promenade

Visualisation



Existing Condition



Direction of visualisation

Car Park - Open Space

Material Palette



Exposed Aggregate Surface



Furniture



Bins



Anticlimb railing



Lighting



Illuminated Water Feature



Grass Crete



Amenity Grass



Hedge Planting



Maritime Pine Trees



Wildflower Planting



Bulb Planting

C - Breakwater to Seaview Promenade

Existing Conditions

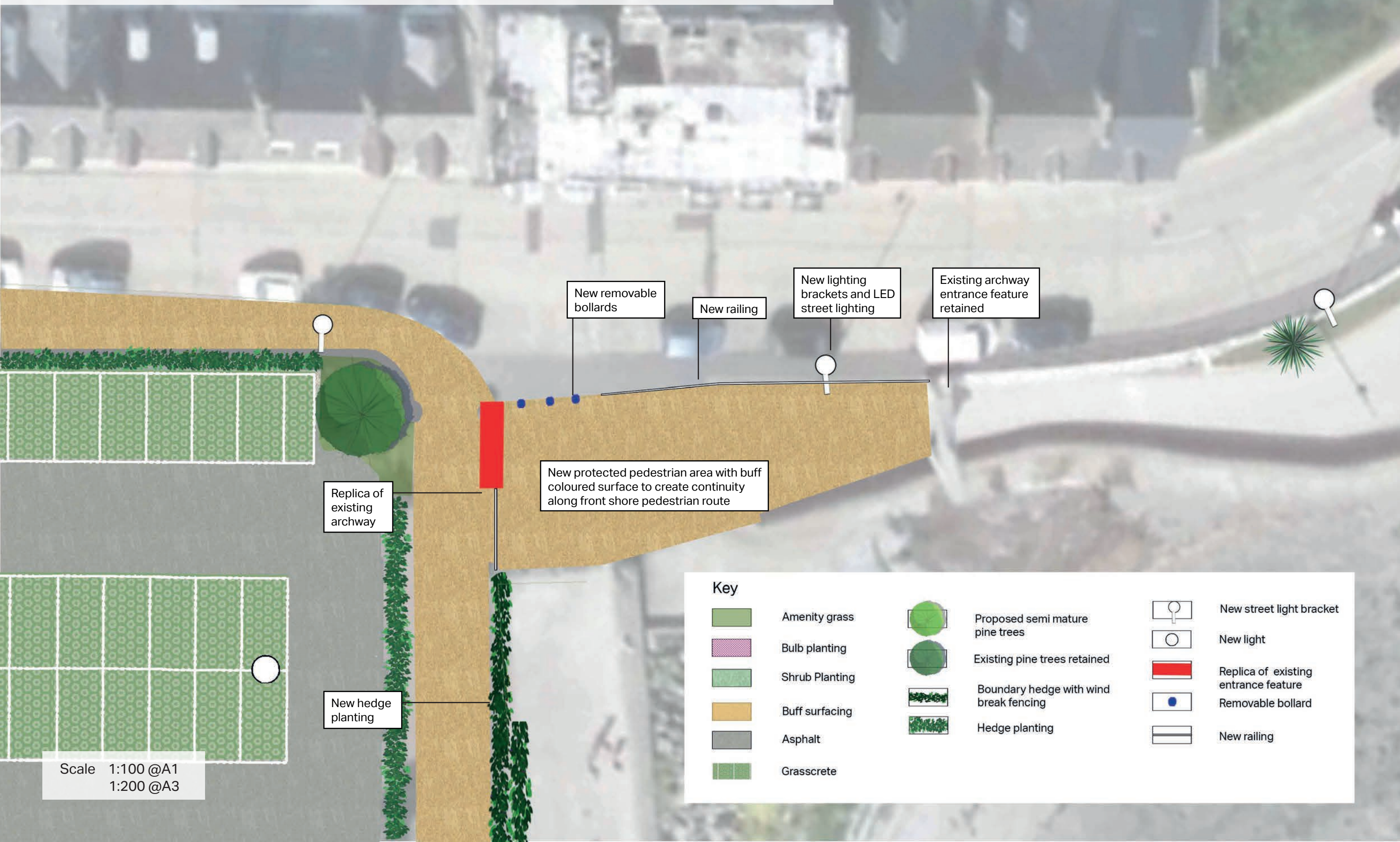


Scale 1:100 @A1
1:200 @A3



C - Breakwater to Seaview Promenade

Design Proposal



New protected pedestrian area with buff coloured surface to create continuity along front shore pedestrian route

Replica of existing archway

New hedge planting

New removable bollards

New railing

New lighting brackets and LED street lighting

Existing archway entrance feature retained

Key

	Amenity grass		Proposed semi mature pine trees		New street light bracket
	Bulb planting		Existing pine trees retained		New light
	Shrub Planting		Boundary hedge with wind break fencing		Replica of existing entrance feature
	Buff surfacing		Hedge planting		Removable bollard
	Asphalt				New railing
	Grasscrete				

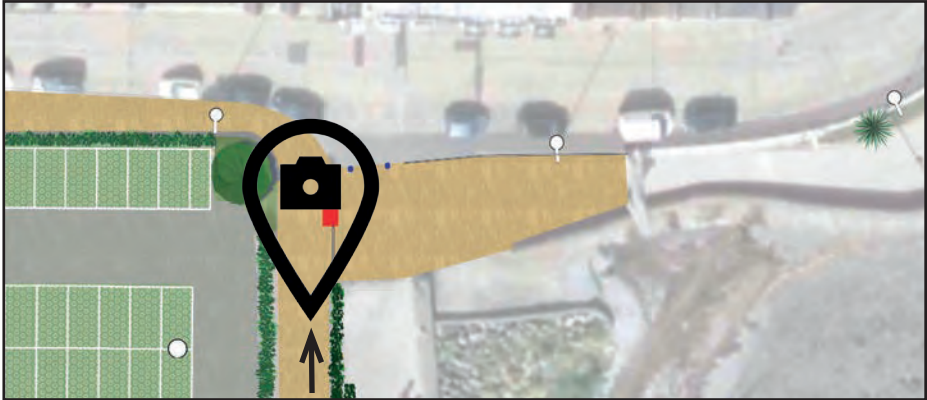
Scale 1:100 @A1
1:200 @A3

Breakwater to Seaview Promenade

Visualisation



Existing Condition



Direction of visualisation

Breakwater to Seaview Promenade

Material Palette



Exposed Aggregate Surface



Replication of Existing Archway



New Lighting Brackets and Lanterns in White



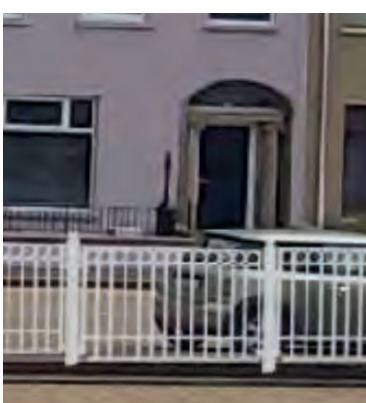
Removable Bollards



Bin



Hedge Planting



Replication of Existing Railing

D - Seaview Promenade

Existing Conditions



Scale 1:250 @A1
1:500 @A3

D - Seaview Promenade

Design Proposal



New Cordyline
tree planting

New lighting
brackets and LED
street lighting

New controlled
pedestrian
crossing

Key



Cordyline planting



New street light bracket



Tactile paving to proposed
pedestrian crossing

Scale 1:250 @A1
1:500 @A3

Seaview Promenade

Visualisation



Existing Condition



Direction of visualisation

E - The Baths to Slieve Foy Place

Existing Conditions



Scale 1:250 @A1
1:500 @A3

E - The Baths to Slieve Foy Place

Design Proposal



New Cordyline
tree planting


New lighting
brackets and LED
street lighting

New buff coloured
surface

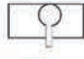
Controlled pedestrian
crossing to be retained

Ramps to beach to be
made accessible for all


Key




Cordyline planting



New street light bracket



Tactile paving to existing
pedestrian crossing



Buff surfacing

Scale 1:250 @A1
1:500 @A3

Seaview Promenade

Visualisation



Existing Condition



Direction of visualisation