

REVISIONS		
REV	DATE	DESCRIPTION
A	31.10.19	1. Notes added.

NOTES		
-------	--	--

PROJECT		
STAGE	CLIENT	PROJECT
Planning	MMANDD	Castlewellaan Forest Park

Drawn by	PM	Approved
1945-PL-5-102		

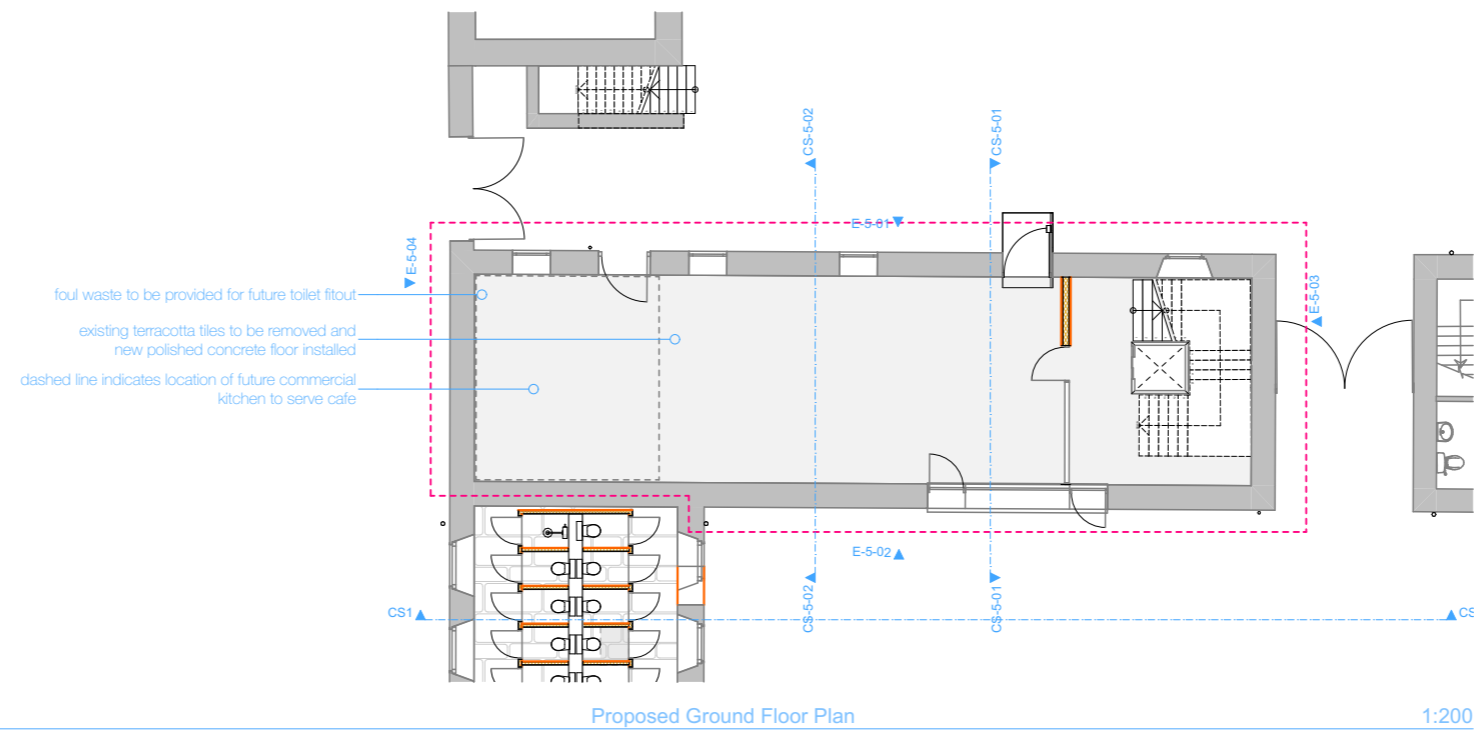
**don** Architects Ltd  
 Unit 2, Conway Mill  
 5-7, Conway Street Belfast BT13 2DE  
 t. 028 9024 8144 f. 028 9023 5127  
 e. info@don.co.uk www.don.co.uk

Block 5 - Ground Floor

- New cor-ten steel canopy fitted to existing opening
- New glass door to cor-ten steel canopy entrance
- New opening formed in existing wall with double glazed timber screen with deep reveals
- New hardwood doors to new timber screen
- New internal metal stud fire wall to stairs
- New 1/2 hr glazed fire screen
- Existing terracotta floor tiles to be removed and new polished concrete floor installed
- Provision for toilets in future fitout
- Limewash to all external walls

(Cafe & kitchen fitout by others)

M&E services as M&E documents  
 Upgrade fire alarm as M&E documents

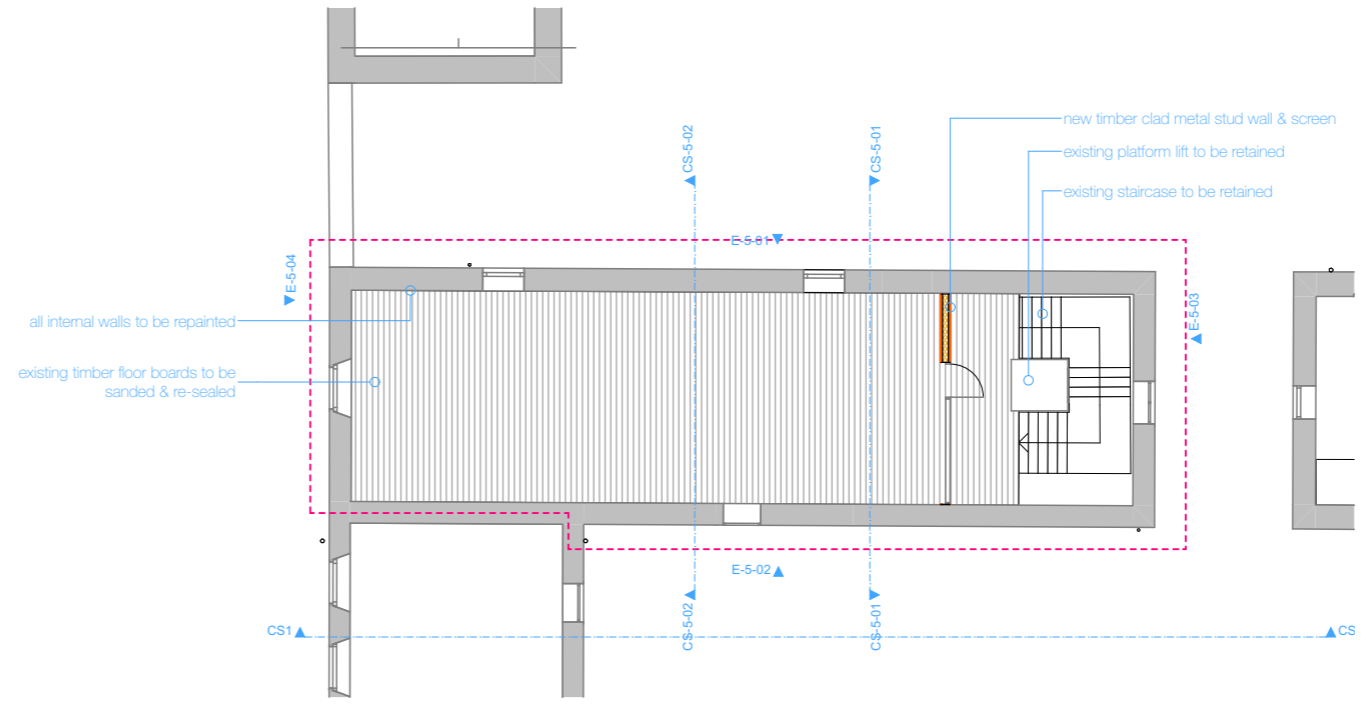


0. Proposed Ground Floor Plan 1:200

Block 5 - First Floor

- New internal metal stud fire wall to stairs
- New 1/2 hr glazed fire screen
- Existing timber floor sanded and sealed
- Limewash to all external walls

M&E services as M&E documents  
 Upgrade fire alarm as M&E documents



1. Proposed First Floor Plan 1:200