



**Brown Bin**  
Food and garden waste

**TOP TIP**  
You can collect compostable caddy liners from Household Recycling Centres and a number of Council buildings. Visit our website for more information



**Blue Bin**  
Mixed dry recyclable waste

**TOP TIP**  
To save room in your Blue bin, flatten boxes, squash bottles and stack similar containers together

**YES**

meat and bones	remove packaging	bread and pastries
cheese	dairy	fish
tea and coffee grounds	fruit and vegetables	grass
plate scrapings	leaves	dead plants and flowers
food contaminated paper (torn up)	cold ashes	

Extra garden waste can be recycled at your local Household Recycling Centre

Only use compostable liners that bear the recycling logo

**OUT BY 01:30**

Turn over

**YES (clean and dry)**

paper	remove plastic wrapping	magazines	directories and catalogues	cardboard packaging	corrugated cardboard	toilet roll liners	cartons
drink cans	food tins	aerosols	plastic packaging	cleaning bottles	plastic drinks bottles	plastic milk bottles	rinse and squash

**OUT BY 01:30**

Recycle Right- easy guide

keep me handy



Residents of Newry, Mourne and Down district have changed their waste habits and are now recycling more food and dry recyclable waste than ever before. The Council would like to thank you for recycling and encourage you to keep it up.

If you have a question or need further information please contact us

0300 013 2233  
recycling@nmandd.org  
www.newrymournedown.org

Twitter Facebook

Strictly **NO** food waste

Please note: All information contained in this leaflet may be subject to change

# Recycle Right

## your easy guide to recycling



Comhairle Ceantair an Iúir, Mhúrn agus an Dúin  
Newry, Mourne and Down District Council

Return Address: Oifig Dhún Pádraig, Downpatrick Office  
Downshire Civic Centre, Downshire Estate  
Ardglass Road, Downpatrick BT30 6GQ

Delivered by  
Royal Mail

ROYAL MAIL  
POSTAGE PAID GB  
HQ45809

Ag freastal ar an Dún agus Ard Mhacha Theas  
Serving Down and South Armagh

Comhairle Ceantair an Iúir, Mhúrn agus an Dúin  
Newry, Mourne and Down District Council

# Your Recycling Services at a glance...

Most people in Newry, Mourne and Down district recycle, however research suggests there is still some confusion on how to use recycling services effectively. Newry, Mourne and Down District Council has created this guide to help you recycle right and recycle more.

The Council provides recycling facilities and services throughout the district so everyone can reduce the amount of waste landfilled and recycle where possible.

## The current facilities and services are:

- Household Bin Collections
- Household Recycling Centres
- Recycling ‘Bring Sites’
- Bulky Waste Collection Service

For household bin collections the Council provides a three bin recycling service.

The common colour scheme for each bin is as follows:



\*Some areas within the district may have a Green bin instead of a Blue bin for dry recyclable waste. Please note when the Blue bin is referred to, this also includes the Green bin.

good to know

During 2016/17 householders in our community recycled 32,000 tonne of material. The good news is that, according to current statistics, the district's recycling rate will increase by a further 4% this year.

However, a recent study has shown that over 50% of the average contents of the Black bins we collect could be recycled in either the Blue or Brown bin.

Recycling saves money that could be better spent on other Council services. Use this guide to help you, and thank you for supporting your community by recycling more.



**Household Recycling Centres (HRCs)**  
10 located around the district. Over 20 different types of materials recycled.

See page 8 for more information.



**Recycling 'Bring Sites'**  
50 located around the district. Glass, cans and textiles accepted for recycling.

See page 9 for more information.

## Reminder – Recycle Right!

Your bin must be presented by 7.30am on each scheduled collection date and must contain the correct waste items.

If incorrect items are placed in your bin, the Council will not empty it until these items are removed. Once corrected, your bin will be emptied on your next scheduled collection date.

All bin lids must be closed with no additional bagged/loose waste. Additional waste can be brought to your local Household Recycling Centre.

**0300 013 2233**

[recycling@nmandd.org](mailto:recycling@nmandd.org)

[www.newrymournedown.org](http://www.newrymournedown.org)



## Recycle Right- easy guide

For more information visit  
[www.newrymournedown.org](http://www.newrymournedown.org)  
or telephone 0300 013 2233

### Black Bin

Non-recyclable waste

Recyclable materials **MUST NOT** be placed in your Black bin. Bins containing the wrong material will not be lifted.



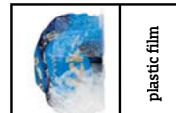
plastic bags



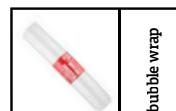
nappies



polystyrene



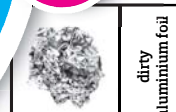
plastic film



bubble wrap



ceramics



dirty aluminium foil



OUT BY 07:30



### Why must Blue bin material be clean and dry?

If items once contained food or liquid they must be rinsed clean and given a shake to remove the water before going into your recycling bin. Food and liquid can contaminate the materials in the recycling bin and stop them from being recycled eg wet paper cannot be recycled.

### Why must Blue bin material be loose?

Please do not bag your recyclables. Plastic bags get tangled in the machines and slow down the sorting lines as people must empty them.

good to know

good to know

### TOP TIP

You can recycle many other household wastes including: glass bottles/jars, clothes and electrical appliances at your local household recycling centre



# Blue Bin Service

Your Blue bin is for dry recyclable materials only.  
 Recyclable materials **MUST NOT** be placed in your Black bin.



- All items placed in the Blue bin must be:**
- ✓ Clean (rinse out food and liquid)
  - ✓ Dry
  - ✓ Loose
  - ✗ Do not place items in plastic bags
  - ✗ No food, liquids or non-recyclable waste

Last year people in Newry, Mourne and Down area recycled over 10,000 tonne of Blue bin waste. Most people are using their Blue bin to recycle and the guide below should help you to recycle even more.

Please remember items must be clean, dry and loose.

If incorrect items are disposed off in your Blue bin, the Council will not empty it until these items are removed.

Your bin will then be collected on your next scheduled collection date.

## What items can be recycled in your Blue bin

<b>Paper and Card</b>	<b>Metal Cans and Aerosols</b>	<b>Plastic Bottles and Containers</b>	<b>Cartons</b>
Cardboard Envelopes Magazines Newspapers Paper	Aerosols Biscuit Tins Food Tins Drink Cans Metal Cans	Plastic Bottles Plastic Containers Pots and Tubs Trays	Food Cartons Juice Cartons Milk Cartons



# Mixed Paper and Card

**YES** (clean and dry)

- ✓ Brochures
- ✓ Cardboard boxes (eg cereal boxes, dishwasher tablet boxes)
- ✓ Catalogues
- ✓ Corrugated cardboard (eg online delivery boxes, cardboard envelopes)
- ✓ Envelopes (remove plastics)
- ✓ Flyers
- ✓ Greetings cards **without** glitter
- ✓ Leaflets
- ✓ Magazines
- ✓ Newspapers
- ✓ Telephone directories
- ✓ White paper

**TOP TIP**  
 To save room in your Blue bin, flatten boxes, squash bottles and stack similar containers together

**NO**

- ✗ Cards **with** glitter
- ✗ Kitchen roll
- ✗ Napkins
- ✗ Shredded paper
- ✗ Takeaway coffee cups
- ✗ Tissues
- ✗ Wallpaper
- ✗ Wrapping paper

Please place these wet, soiled or glittered items in your Black bin

✗ Food contaminated cardboard (eg pizza box)

Place please food contaminated cardboard in your **Brown** bin.

**good to know**

Small amounts of food contaminated cardboard, shredded paper, and used kitchen roll can be recycled in your Brown bin.

**TOP TIP**  
 Remove any plastic wrapping before recycling



# Metal Cans and Aerosols

**YES** (clean and dry)

- ✓ Biscuit tins
- ✓ Chocolate tins
- ✓ Clean foil
- ✓ Drinks cans
- ✓ Empty aerosols
- ✓ Food tins

**TOP TIP**  
 Pop tin lids inside the tin

**NO**

- ✗ Crisp packets
- ✗ Dirty aluminium foil
- ✗ Laminated foil (eg cat food, coffee pouches)
- ✗ Sweet wrappers

Please place these items in your Black bin

- ✗ Kitchenware (eg cutlery, pots, pans, kettles, irons, pipes, white goods)

**good to know**

Large metal and plastic items can be recycled at your local Household Recycling Centre.

Please turn over for more Blue bin items





## Plastic Bottles and Containers

**YES** (clean and dry)

- ✓ All plastic bottles clear and coloured (eg milk, drink, shampoo, detergent bottles)
- ✓ Plant pots (small)
- ✓ Pots (eg yogurt, soup)
- ✓ Trays/punnets (excluding polystyrene)
- ✓ Tubs
- ✓ (eg margarine, ice cream, chocolate, biscuit)

**NO**

- ✗ Crisp and sweet wrappers
- ✗ Medical blister pack/ tablet packaging
- ✗ Plastic bags, film or wrapping (eg bread bags, bubble wrap)
- ✗ Plastic toys
- ✗ Polystyrene cups, trays and protective packaging.

Please place these items in your Black bin.

**good to know**

Although most of us recycle, shampoo bottles, toothpaste boxes and deodorant cans are sometimes forgotten – it's easy and worthwhile to recycle these smaller items from the bathroom.

**NO**

- ✗ Laminated plastic drink or food pouches (eg baby food pouches, cat food pouches, coffee pouches)

Please place these items in your Black bin.



## Cartons

**YES** (clean and dry)

- ✓ Drinks cartons (eg juice cartons)
- ✓ Food cartons (eg custard, soup)
- ✓ Waxed cartons

**Important!**

Glass bottles and jars cannot be placed in your Blue bin for recycling. You can recycle glass waste at your nearest Bring Site or local Household Recycling Centre.

**good to know**

Glass is 100% recyclable and can be recycled endlessly without loss in quality. The average bottle bank holds about 3000 glass bottles.



## Brown Bin Service

Your Brown bin is primarily for food waste, however spare capacity can be used to recycle small amounts of cold ashes and garden waste.

**Non-organic materials (ie items that will not rot) and general waste MUST NOT be placed in your Brown bin.**

### What items can be recycled in your Brown bin?

**YES**

- ✓ Bread
- ✓ Cold ashes
- ✓ Dairy
- ✓ Eggshells
- ✓ Fish
- ✓ Food contaminated cardboard
- ✓ Fruit and vegetables
- ✓ Garden waste
- ✓ Meat and bones
- ✓ Plate scrapings/leftovers
- ✓ Tea and coffee grounds

**good to know**

You can also recycle small amounts of food contaminated cardboard eg pizza boxes (torn up), shredded paper and used kitchen roll.

**NO**

- ✗ Liquids, oil or liquid fats  
Please dispose of oil or liquid fats at your local [Household Recycling Centre](#)
- ✗ Packaging  
All packaging, where recyclable, should be placed in your [Blue bin](#)
- ✗ Pet waste  
Please dispose of bagged cat litter and dog waste in your [Black bin](#)
- ✗ Plant pots  
Please recycle these items in your [Blue bin](#)
- ✗ Plastic bags - please dispose of plastic bags in your [Black bin](#)
- ✗ Soil or stones

### TOP TIP

You can collect compostable caddy liners from Household Recycling Centres and a number of Council buildings. Visit our website for more information

**Only use compostable liners that bear the seedling logo**



# Household Recycling Centres

The Council operates 10 Household Recycling Centres (HRCs) throughout the district for recyclable waste that cannot be picked up through household bin collections.

You can recycle the following at these Centres:

## Household Waste



## Restricted Materials



**Important!**  
Users **MUST** sort their waste for recycling and will not be allowed to dispose of recyclable waste in the general waste stream.

- Cooking and engine oil restricted to 25 litres per visit per day - applies to all Centres
- Gas bottles should be taken to an approved gas appliance dealer
- Household paint is only accepted at Kilkeel, Camlough, Newry, Castlewellan, Ballynahinch, Downpatrick HRCs and restricted to 10 litres per visit per day
- Rubble (from household sources) is restricted to 25kg - applies to all centres.

## Household Recycling Centre locations

Ballynahinch	Ballykine	Tel: 0300 013 2233
Camlough	Quarter Road	Tel: 028 3083 7352
Castlewellan	Bann Road	Tel: 028 4377 2891
Crossmaglen	Newry Road	Tel: 028 3086 0777
Downpatrick	Cloonagh Road	Tel: 028 4483 9884
Hilltown	Rostrevor Road,	Tel: 028 4063 8408
Kilkeel	Ballymageogh Road	Tel: 028 4176 9485
Newry	Chapel Road	Tel: 028 3083 3699
Newtownhamilton	Newry Road	Tel: 028 3087 8014
Warrenpoint	Upper Dromore Road	Tel: 028 4175 2952

## TOP TIP

Allow sufficient time for disposal and pre-sort your waste before arriving

# Recycling 'Bring Sites'

Did you know there are approximately 50 recycling 'Bring Sites' located in the district? These sites cater for the recycling of glass bottles and jars, food and drinks cans and textiles.

## Annacloy

Mace Shop, Annacloy Road

## Annsborough

Annsborough Social Club, Ballylough Road

## Ardglass

Ardglass Harbour

## Ballyhornan

Road House Bar Car Park, Ballyhornan Road

## Ballykinler

Ballykinler GAA Club, Commons Road

Ballykinler Shop, Commons Road

## Ballymartin

Ballymartin Inn Car Park, Main Road A2

## Ballynahinch

Ballynahinch Car Park, Lisburn Street

Ballynahinch Rugby Club, Mountview Road

## Ballynoe

The Castle Inn Car Park, Ballynoe Road

## Ballyward

Dolly's Brae Inn Car Park, Gargarry Road

## Bessbrook

Cloughreagh Community Centre, Millvale Road

## Burren

Community Centre Car Park, Bridge Road

## Camlough

DG's Snooker Hall Car Park, Camlough Road

## Clough

Eurospar Car Park, Main Street A24

## Crossgar

The Villager Car Park, Kilmore Road

## Darragh Cross

The Oakes Car Park, Manse Road

## Downpatrick

Downpatrick Cricket Club Car Park, Strangford Road

## Dromintee

Dromintee Village, Low Road

## Drumaness

Drumaness Cricket Club Car Park

## Drumroad

Parochial Hall Car Park, Drumroad

## Drumnaquoile

St John's GAA Club Car Park, Ballywillwill Road

## Dundrum

Dundrum Car Park, Main Street

## Forkhill

Murphy Bros, Carrickasticken Road

## Kilcoo

Dublin Road

## Kilkeel

Cranfield Beach Main Car Park

Kilkeel Leisure Centre, Mourne Esplanade

## Killough

Car Park, Main Street

## Killyleagh

Bridge Community Centre, Braeside Gardens

Delamont Country Park Car Park

## Leitrim

Liatroim GAA Club Car Park, Backaderry Road

## Loughinisland

Brennan's Spar Car Park, Newcastle Road A24

The Heights Bar Car Park

## Maghera

Maghera Inn Car Park, Ballyloughlin Road

## Meigh

Mulkerns Spar Car Park, Forkhill Road

The Corner House Car Park, Drumintee Road

## Minerstown

Minerstown Tavern Car Park, Minerstown Road

## Mullaghbawn

Mullaghbawn Community Centre, Tullymacreeve Road

## Newcastle

Bonny Caravan Park, Tullybrannigan Road

Donard Street Car Park

Mourne View Caravan Park, Dundrum Road

Newcastle Tennis Club Car Park, Bryansford Road

Tesco Car Park, Castlewellan Road

## Newry

Buttercrane Shopping Centre, Car Park

Tennis Courts, Greenbank, Warrenpoint Road

## Saul

Paddy's Barn Car Park, Mearne Road

## Silverbridge

Donnelly's Bar Car Park, Silverbridge Road

Silverbridge GAA Club Car Park, New Road

## Strangford

Inverbrena Community Centre, Stella Maris Street

## Tyrella Beach

Tyrella Beach Car Park, Tyrella Road

## Whitecross

Whitecross Bar Car Park, Tullyah Road

# Bulky Collections

This service is for items which are too large for regular household bin disposal and for residents who, for whatever reason, cannot dispose of bulky waste at their local Household Recycling Centre.

There is a £10 charge per collection and payment is required before any items are taken. Payment can be made by telephone using your credit or debit card, or alternatively with cash at a small number of Council buildings. When arranging a collection, please be prepared to provide your name, address, location of bulky items and a contact telephone number. **Currently, bulky collection items are limited to five per household, per collection. For further information contact 0300 013 2233.**

## COLLECTED

### White goods including:

- ✓ Cooker
- ✓ Freezer
- ✓ Fridge
- ✓ Microwave
- ✓ Tumble dryer
- ✓ Washing machine

### Furnishing including:

- ✓ Carpet
- ✓ Beds and mattresses
- ✓ Sofas
- ✓ Tables and chairs

## NOT COLLECTED

- ✗ Bathroom suites
- ✗ Building/DIY waste
- ✗ Coalbunkers
- ✗ Dead animals
- ✗ Domestic waste – loose or bagged
- ✗ Garage doors
- ✗ Garden waste and trees
- ✗ Hazardous waste eg paint, oil
- ✗ Heating appliances
- ✗ Fireplaces
- ✗ Kitchen cupboards
- ✗ Oil tanks
- ✗ Pianos
- ✗ Sheds
- ✗ Vehicle parts
- ✗ Vehicle tyres
- ✗ Window frames



**Important!**  
Items such as fridges and freezers must be cleared, shelving removed and doors securely closed with tape. All shelves must be taped and secured and left beside the appliance for collection.

# Black Bin Service

Your Black bin is for household waste that cannot be recycled in either the Blue bin, Brown bin or at your local Household Recycling Centre. Recyclable materials and food waste **MUST NOT** be placed in your Black bin.

## What items can be disposed in your Black bin?



## YES

- ✓ Ceramics (eg mugs, plates, cookware)
- ✓ Dirty aluminium foil
- ✓ Envelopes - plastic or padded glittered items (eg Christmas cards)
- ✓ Glass bottles and jars  
Please recycle these glass items at your nearest Bring Site or local Household Recycling Centre
- ✓ Nappies and other sanitary products
- ✓ Pet waste (bagged cat litter and dog foul)
- ✓ Plastic bags
- ✓ Plastic food film/wrapping (eg cling film, crisp packets, sweet wrappers)
- ✓ Plastic pouches
- ✓ Polystyrene (eg cups, trays, protective packaging)
- ✓ Shiny wrapping paper
- ✓ Vacuum bags
- ✓ Wallpaper

## NO

- ✗ Bulky items  
Please dispose of these items at your local Household Recycling Centre (or arrange a bulky collection)
- ✗ Cardboard
- ✗ Cartons  
Please recycle these items in your Blue bin
- ✗ DIY, building or construction waste (eg rubble)  
Please dispose of these items at your local Household Recycling Centre. Restrictions apply
- ✗ Food waste  
Please recycle food waste in your Brown bin
- ✗ Garden waste  
Please recycle garden waste in your Brown bin or at your Local Household Recycling Centre
- ✗ Hazardous/special or clinical waste  
Please dispose of these items at your local Household Recycling Centre Restrictions apply
- ✗ Metal cans and aerosols
- ✗ Paper
- ✗ Plastic bottles and containers  
Please recycle these items in your Blue bin

## TOP TIP

Clothes and footwear can be donated to charity or recycled at your local household recycling centre or bring site

## Important!

Items arranged for collection should be clearly labelled (where necessary) and presented at an agreed location.

Any items that are likely to absorb moisture should also be covered eg carpets. Carpets are also required to be tied when presented for bulky collection.