

Outcome: All people in Newry, Mourne and Down live in respectful, safe and vibrant communities

Indicator:

Level of Civic Participation

Participating in society, through for instance, the expression of political voice, is essential to individual well-being. Political voice is not only part of the basic freedoms and rights that are worthwhile to all humans, but It also enhances the accountability and effectiveness of public policy. In addition to these benefits, participating in community life allows individuals to develop a sense of belonging and trust in others. Effective democracies rest on two essential foundations: civic attitudes of inclusion, tolerance and regard for rights of others and civic behaviour.

Measure:

Voter turnout and consultation on rule making

Voter Turnout and Consultation on Rule Making

EU Referendum Voter Turnout Northern Ireland 2016

Referendum Results NI 2016					
	Leave	Remain	Electorate	Valid Votes	Didn't Vote
Northern Ireland	349,442	440,707	1,260,955	790,149	470,806
	44.22%	55.78%			

Source: The Electoral Commission

The table above shows the voter turnout in Northern Ireland for the EU Referendum Election which took place this year. We can see that out of an electorate of 1,260,955 in Northern Ireland, 790,149 cast valid votes accounting for 62.7%. 37.3% of the electorate did not vote.

Of those that did vote, 55.78% opted to remain with the remaining 44.22% voting to leave.

EU Referendum Turnout Newry Mourne and Down District Council area 2016

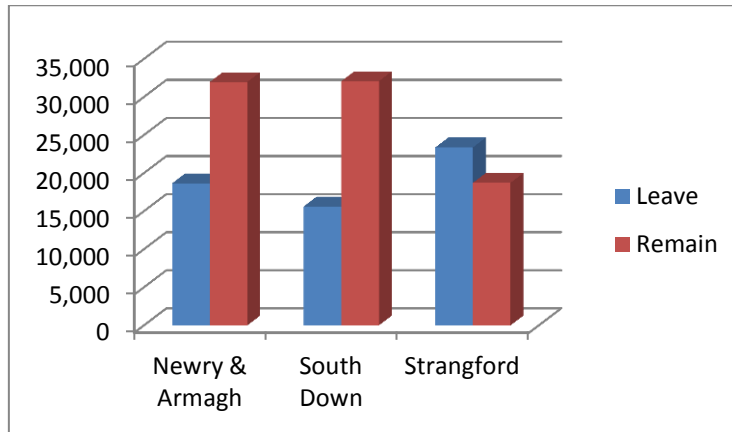
EU Referendum Results in Northern Ireland by Constituency	Leave	Remain	Valid Votes	Spoilt Votes	Votes Cast / Turnout	Turnout %	Electorate
Newry & Armagh	18,659	31,963	50,622	22	50644	63.94	79211
South Down	15,625	32,076	47,701	23	47724	62.22	76697
Strangford	23,383	18,727	42,110	13	42123	64.17	65642

The table above shows the EU Referendum break down for the Newry Mourne and Down District Council area as covered by the three parliamentary constituencies of Newry & Armagh, South Down and Strangford.

Looking at the results for the district we can see that Strangford had the biggest percentage of voter turnout with 64.17%. Newry and Armagh constituency was slightly below this with 63.94% while South Down recorded the lowest % of voter turnout with 62.22%.

The graph below shows the break down of results for those that wanted to remain and those that wanted to leave, for the Newry Mourne and Down District Council area. We can see that the majority in Newry and Armagh and South Down voted to remain whilst in Strangford the majority voted to leave.

Leave/Remain 2016 Consistency



Source: The Electoral Commission

UK Parliament General Elections 2010/15						
	2010	2010	Voter %	2015	2015	Voter %
Constituency Name	Electorate	Total number of valid votes counted		Electorate	Total number of valid votes counted	
Newry and Armagh	74,308	44,906	60.43	77,633	49,877	64.24
South Down	70,784	42,589	60.16	75,220	42,697	56.76
Strangford	60,539	32,505	53.69	64,289	33,924	52.77

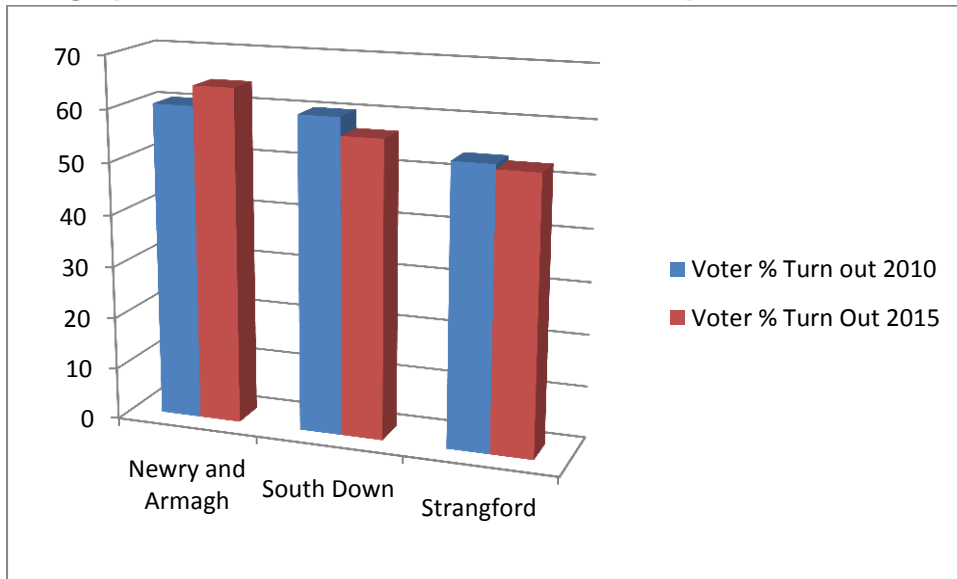
Source: The Electoral Commission

The table above shows the comparisons in voter turnout and electorate for the UK Parliament elections with regards the constituencies covering the Newry, Mourne and Down district council area.

The table shows that the electorate in each constituency area has increased. Newry and Armagh had the biggest electorate number in both 2010 and 2015 and was the only constituency to record an increase in voter turnout, rising from approximately 60% in 2010 to 64% in 2015.

South Down and Strangford however saw their voter % turnout decrease between 2010 and 2015 even though their overall electorate increased during this time.

The graph below shows the voter turnout % comparisons between the constituencies



Source: The Electoral Commission

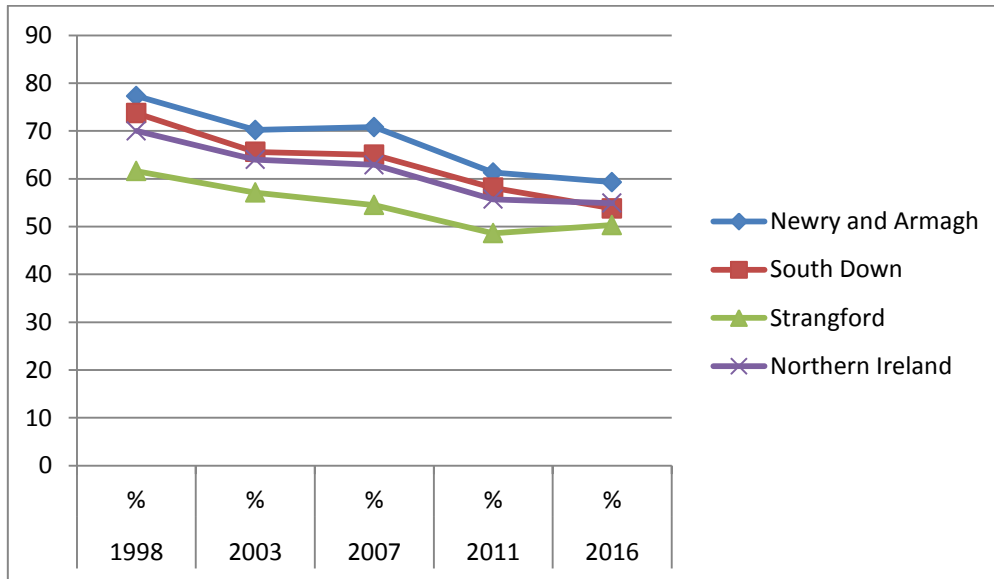
Northern Ireland Assembly Elections

NI Assembly Voter Turnout %	1998	2003	2007	2011	2016
	%	%	%	%	%
Newry and Armagh	77.3	70.2	70.8	61.3	59.3
South Down	73.7	65.6	65	58.1	53.8
Strangford	61.6	57.1	54.5	48.6	50.3
Northern Ireland	70	64	62.9	55.7	54.9

Source: NI Assembly

The table above shows the % turn out of voters between 1998 and 2016 for the Northern Ireland Assembly Elections for the Newry Mourne and Down District Council area.

We can see that in Newry and Armagh, voter turnout has been declining steadily since 1998 although Newry and Armagh recorded higher voter turnout figures relative to Northern Ireland during the period analysed. South Down has also seen voter turnout decrease steadily over the period 1998 to 2016. Strangford has also experienced a steady decrease in voter turnout during this period and has the lowest percentage turnout figure of all the constituencies, consistently falling below the NI average.



Source: NI Assembly

Local Council Elections

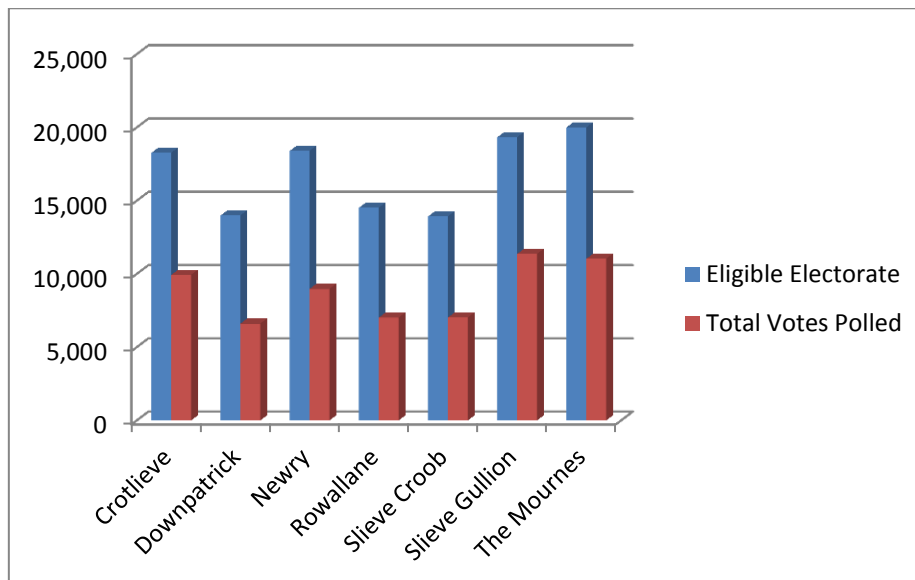
Local Council Elections NMD Turnout 2014

Council Area	District Electoral Area	Eligible Electorate	Total Votes Polled	Turnout (%)
Newry, Mourne and Down	Crotlieve	18,279	9,937	54.36
	Downpatrick	14,000	6,612	47.23
	Newry	18,411	8,981	48.78
	Rowallane	14,526	7,022	48.34
	Slieve Croob	13,939	7,031	50.44
	Slieve Gullion	19,336	11,370	58.80
	The Mournes	20,008	11,042	55.19
	NMD TOTALS	118,499	61,995	51.88

Source: Electoral Office for NI

The above table shows the voter turnout for local council elections in 2014 for the Newry Mourne and Down District Council area which has been broken down to DEA level. From the table we can see that the Mournes had the highest eligible electorate but only had the 4th highest percentage turnout. Slieve Gullion had the highest % of voter turnout in the district with 58.8% with Downpatrick recording the lowest percentage turnout with 47.23%.

Downpatrick, Newry, Rowallane and Slieve Croob all fell below the NMD average % turnout of 51.88%.



Source: Electoral Office for NI