

Outcome: All people in Newry Mourne and Down get a good start in life and fulfil their lifelong potential

Indicator: Level of Quality of School Life

The quality of school life can impact educational attainment and ultimately the life course and health of an individual. Research shows that victims of bullying/abuse have problems, including depression, truancy, social isolation, poor health, even suicidal tendencies.

Socially withdrawn children, and those with low self-esteem, appear to attract bullying, but, in a vicious circle, bullying also reinforces these characteristics. Conversely, other problems, like depression, appear to be a long term result of bullying.

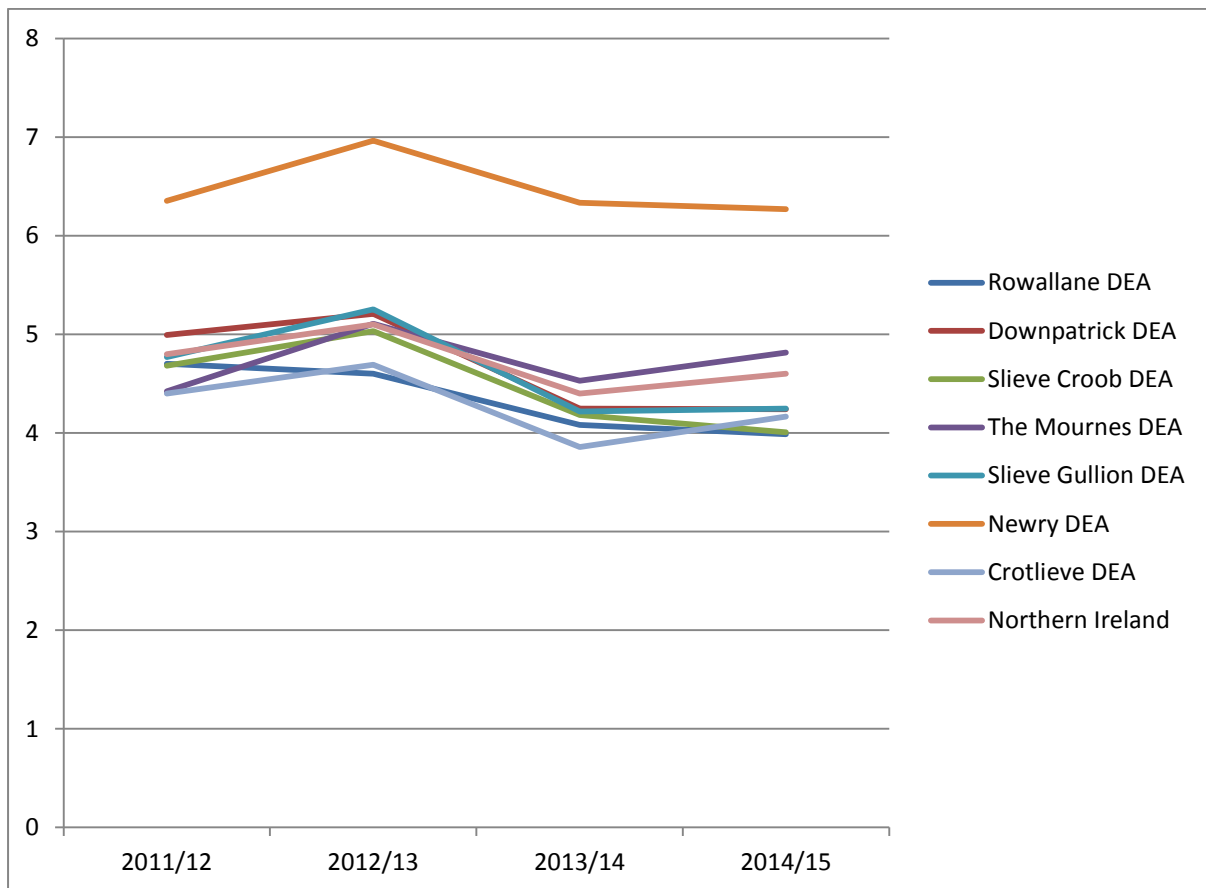
Many other factors contribute to the level of quality of school life, including the appropriateness of the curriculum, the manner of curriculum delivery and how closely it reflects and supports the employment and progression opportunities within the community, including the provision of opportunities to develop enterprise skills.

Measure: Level of Attendance

Level of Attendance – Absence Rate by School

The absence rate (authorised and unauthorised) was analysed for each school within our district and then grouped into the correct ward and DEA. It was analysed for both primary and post primary level from 2011/12 to 2014/15.

Absence Rate by DEA and NI Level 2011-2015 – Primary School Level



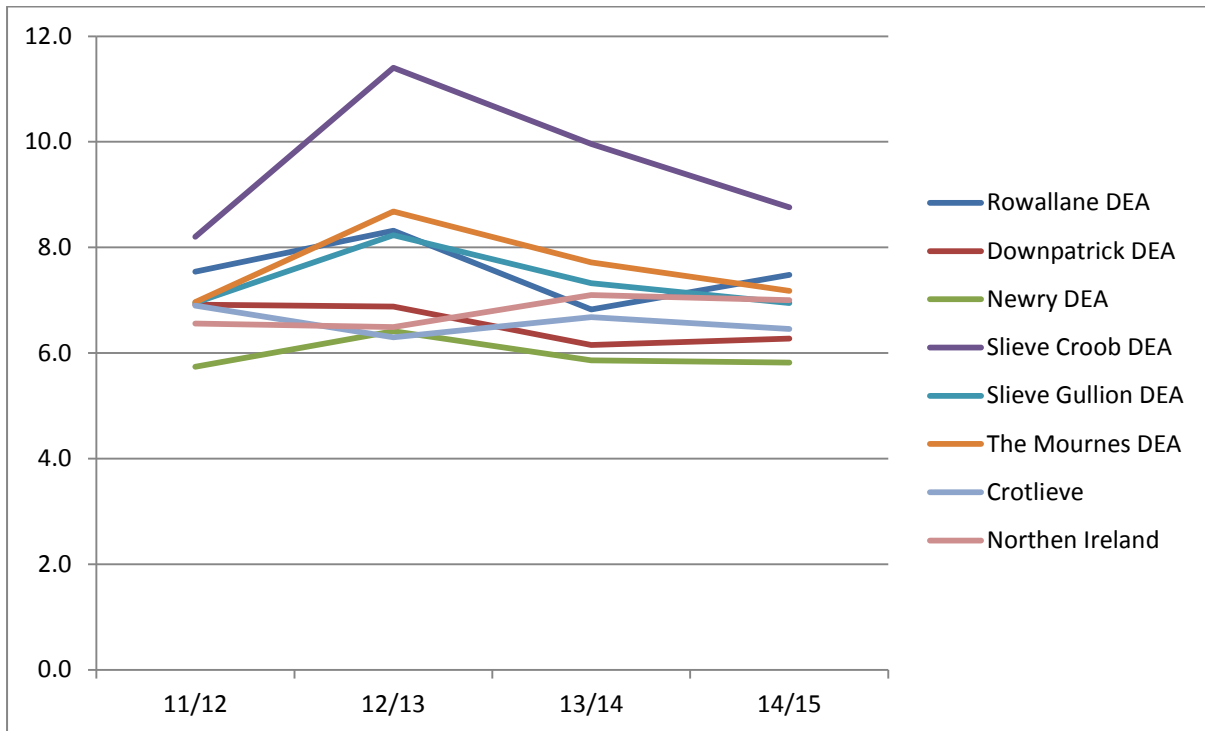
The chart shows that in 2011/12 and 2012/13 there were three DEA's with absence rates above the NI average including Newry, Downpatrick and Slieve Gullion. Between 2013/14 and 2014/15 it has been The Mournes and Newry that have been recording a higher absence rate. Newry is considerably higher than any other DEA and the NI average.

Looking then at post-primary level the table below shows the absence rate by individual schools within the district for the 2014/15 year from highest to lowest.

Post-Primary School Analysis		% Absence 2014/15
4210029	The High School Ballynahinch	10.4
4230102	St Colmcille's High School, Crossgar	9.6
5230059	St Columban's College	9.3
4260309	Blackwater Integrated College	8.8
4230211	St Malachy's High School, Castlewellan	8.8
4230224	De La Salle High School	8.5
5230157	St Paul's High School, Bessbrook	8.5
5210186	Newry High School	8.1
4230161	St Colman's High School, Ballynahinch	7.8
5230056	St Joseph's Boys' High School, Newry	7.8
5230135	St Mark's High School	6.5
5420045	St Louis Grammar School, Kilkeel	6.4
5210025	Newtownhamilton High School	6.4
5230108	St Mary's High School, Newry	6.1
5210016	Kilkeel High School	6.0
4260281	Shimna Integrated College	5.9
5230167	St Joseph's High School, Crossmaglen	5.8
4230023	St Mary's High School, Downpatrick	5.4
5420062	St Colman's College, Newry	5.3
5420059	Abbey Christian Brothers Grammar School	5.0
4210063	Saintfield High School	5.0
4420088	St Patrick's Grammar School, Downpatrick	4.9
4420086	Assumption Grammar School	4.6
5420060	Our Lady's Grammar School	4.4
5420076	Sacred Heart Grammar School, Newry	4.0
4410085	Down High School	3.8

We can see that in the past year the High School in Ballynahinch recorded the highest absence rate across all the schools in our district with 10.4%. The Northern Ireland average was 6.6% indicating that 10 of our post primary schools were above the NI average for absence rates.

Absence Rate 2011-2015 – Post Primary Level



The graph shows that Slieve Croob has the highest absence rate across the district at post primary level however it should be noted that there is only one post primary school within the DEA while the other DEA's figures are from an average of all post-primary schools combined within that DEA.