

Outcome: All people in Newry Mourne and Down get a good start in life and fulfil their lifelong potential

Indicator: Level of Lifelong Learning

Opportunities to retrain, develop new skills, diversify, change career are paramount to our life long wellbeing and fulfilling our potential. Life-long learning opportunities are essential to allow individuals to up skill and progress to higher level opportunities. Such opportunities need to be available to allow progress from all levels, and structures should allow reskilling (ie for those to move from one area of employment to another) as economic needs change.

Measures:

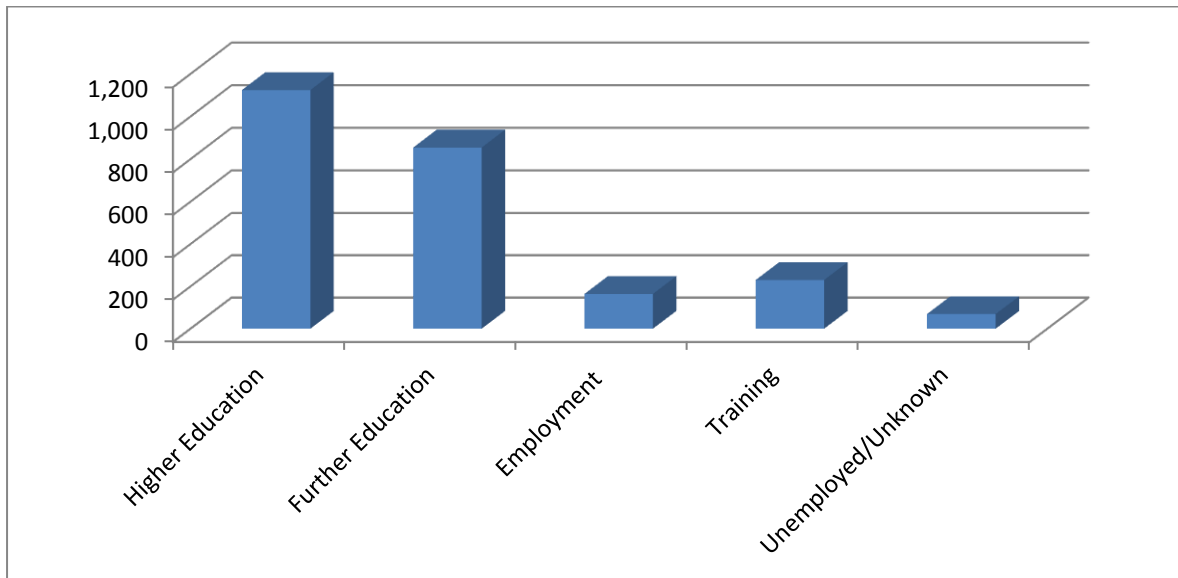
Increase in skills base

Overall numbers in education / further education

Skills in growth areas / growth sectors.

Increase in skills base – Destination of School Leavers (2014/2015)

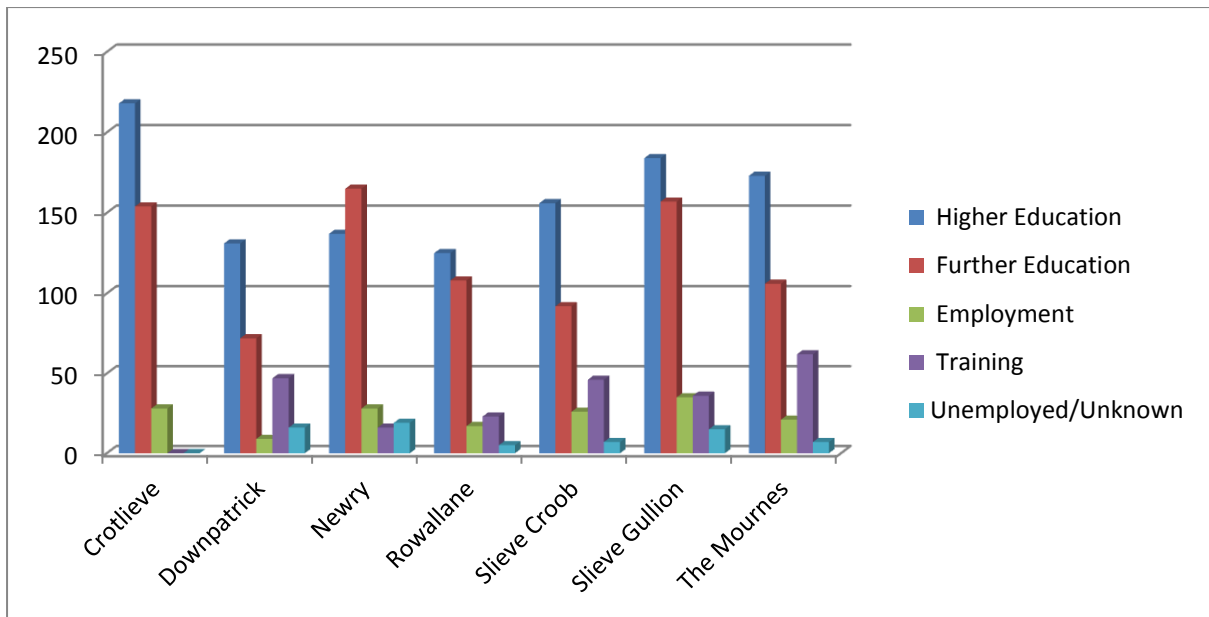
The table below shows the various destinations of 2014/15 school leavers, and we can see that the majority of them went onto Higher and Further education which is vital for the increase in the skills base of our district.



The data has also been analysed at DEA level and is as follows:

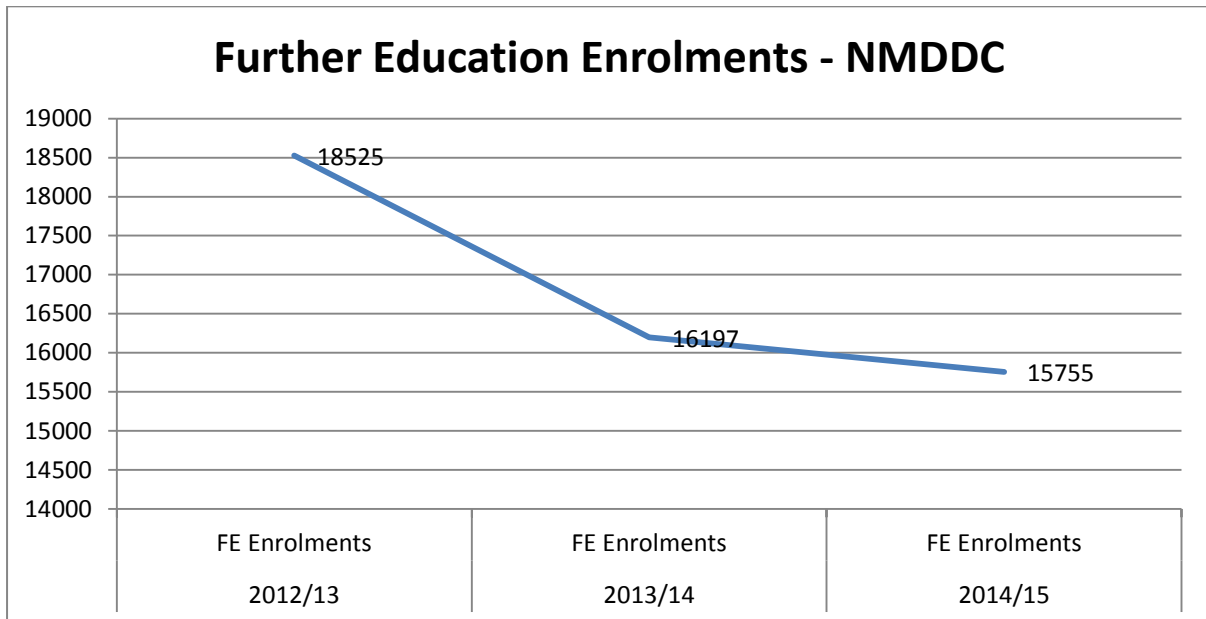
	Higher Education	Further Education	Employment	Training	Unemployed/Unknown
Crotlieve	218	154	28	#	*
Downpatrick	131	72	9	47	16
Newry	137	165	28	16	19
Rowallane	125	108	17	23	5
Slieve Croob	156	92	26	46	7
Slieve Gullion	184	157	35	36	15
The Mournes	173	106	21	62	7

We can see that Crotlieve had the highest number of school leavers going onto Higher Education while Newry had the highest number of leavers going onto Further Education. Downpatrick had the highest number going onto Training while Slieve Gullion had the highest numbers going onto employment.

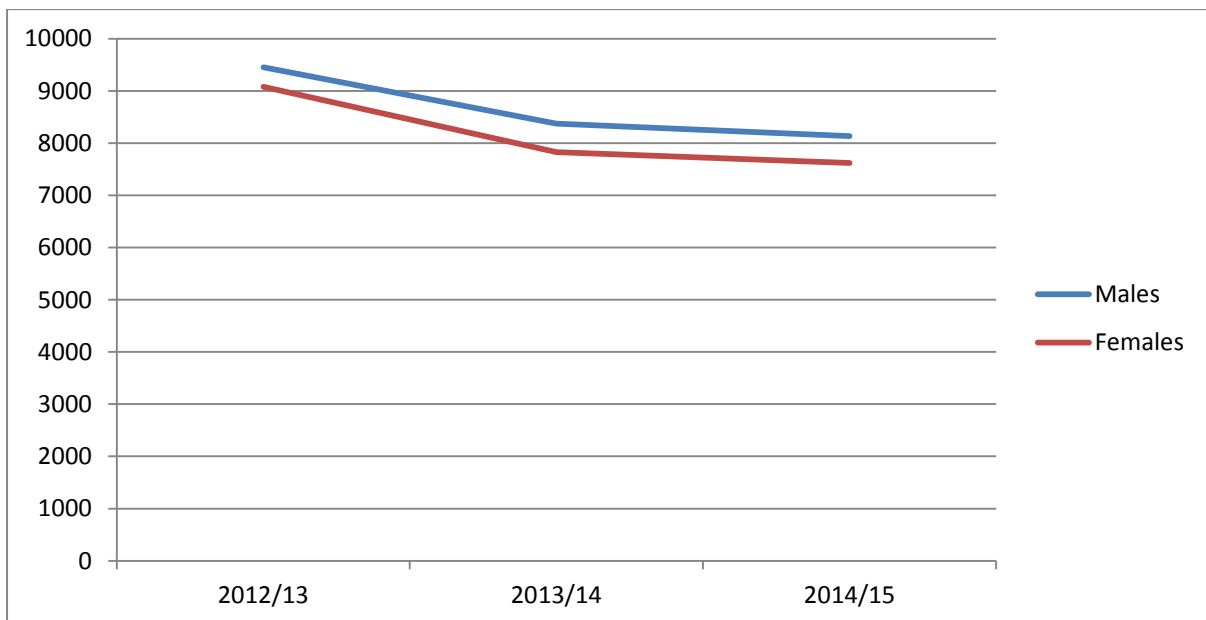


Overall numbers in education / further education – FE Enrolments

There were 15,755 FE Regulated Enrolments in 2014/15. This number has been decreasing since 2012/13 as seen in the graph below.

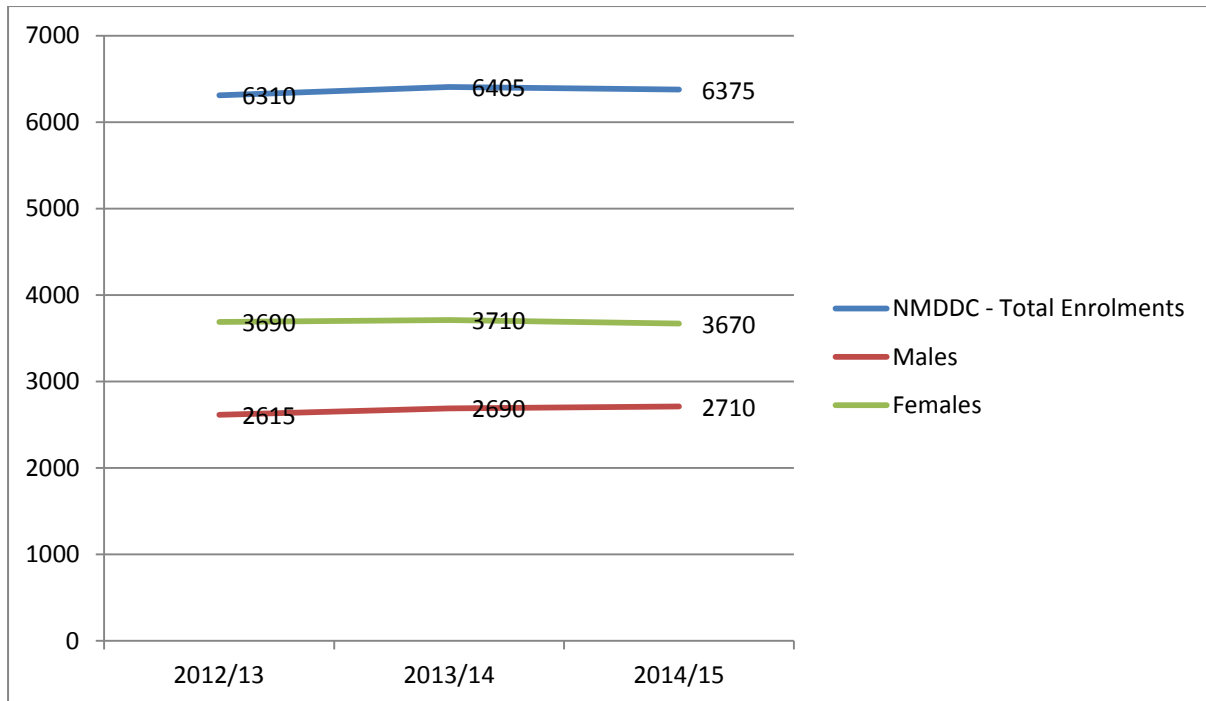


The graph below shows FE enrolments by gender. We can see that in NMDDC there were higher male enrolments than female enrolments across all three years analysed.



Overall numbers in education / further education – HE Enrolments

The graph below shows male and female enrolments and we can see that unlike FE enrolments, there are greater number of females enrolling in HE institutions relative to males.

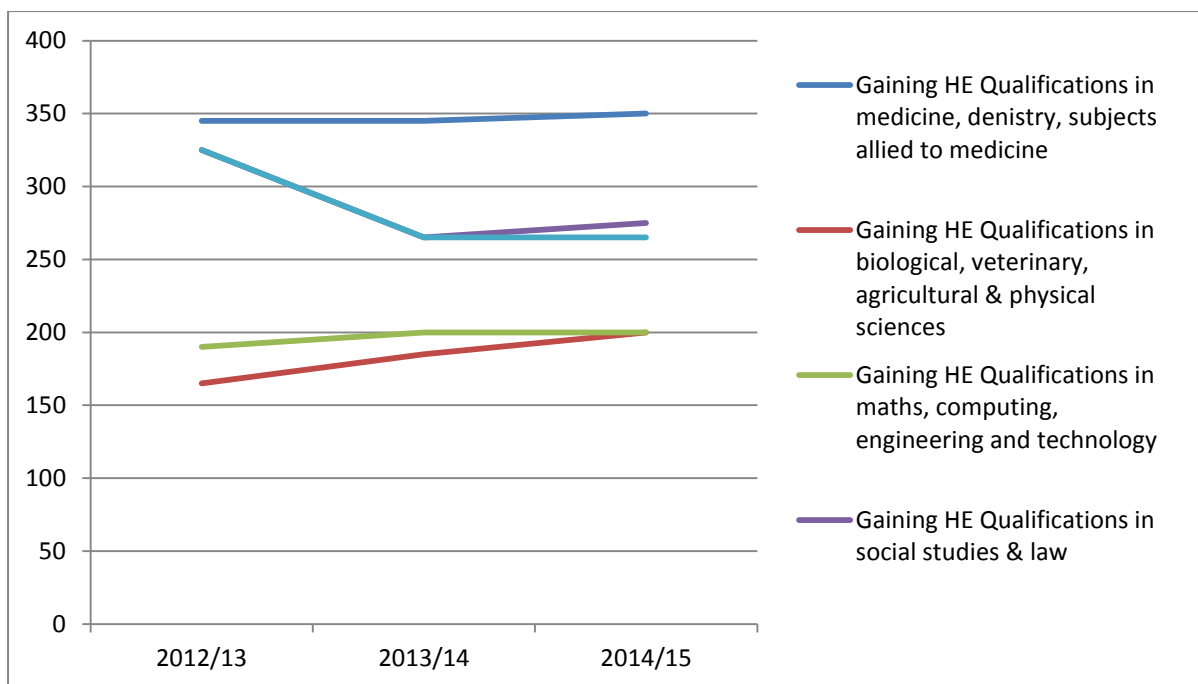


Skills in Growth Areas / Growth Sectors – HE Qualifications

The table below displays the HE qualifications of students from NMDDC and the sectors in which they are in. We can see that medicine and dentistry has the highest number of people qualifying from it across NMDDC and it has been remaining steady over the three years in question.

HE qualifications in biological, veterinary, agricultural and physical sciences has been increasing year on year over the period analysed while decreases have been occurring in business administration, mass communication and documentation.

	2012/13	2013/14	2014/15
Gaining HE Qualifications in medicine, dentistry, subjects allied to medicine	345	345	350
Gaining HE Qualifications in biological, veterinary, agricultural & physical sciences	165	185	200
Gaining HE Qualifications in maths, computing, engineering and technology	190	200	200
Gaining HE Qualifications in social studies & law	325	265	275
Gaining HE Qualifications in business, administration, mass communication and documentation	325	265	265



The HE qualifications was also analysed at ward level within NMDDC and appears in the table below:

	2014/15	2014/15	2014/15	2014/15	2014/15
Ward2014	Gaining HE Qualifications in medicine, dentistry, subjects allied to medicine	Gaining HE Qualifications in biological, veterinary, agricultural & physical sciences	Gaining HE Qualifications in maths, computing, engineering and technology	Gaining HE Qualifications in social studies & law	Gaining HE Qualifications in business, administration, mass communication and documentation
Abbey	5	5	0	10	10
Annalong	10	5	5	5	5
Ballybot	10	0	0	5	5
Ballydugan	15	5	5	10	10
Ballynahinch	0	0	0	5	5
Ballyward	10	5	5	5	5
Bessbrook	5	5	10	10	5
Binnian	5	5	5	5	10
Burren	15	5	5	5	0
Camlough	5	5	5	10	10

Castlewellan	10	5	5	5	0
Cathedral	10	5	0	5	5
Crossgar and Killyleagh	10	10	5	10	5
Crossmaglen	5	0	0	5	5
Damolly	5	5	5	10	10
Derryboy	10	10	5	10	10
Derryleckagh	10	10	10	10	20
Donard	10	0	5	5	5
Drumalane	10	0	5	10	5
Drumaness	10	5	5	10	10
Dundrum	5	5	0	10	5
Fathom	5	5	10	5	5
Forkhill	10	5	5	10	5
Hilltown	10	10	5	5	10
Kilkeel	5	0	0	0	0
Kilmore	5	5	5	5	5
Knocknashinna	15	5	0	5	10
Lecale	10	10	5	5	10
Lisnacree	5	5	10	5	5
Mayobridge	5	5	5	10	10
Mullaghbane	10	10	10	5	5
Murlough	10	5	5	5	10
Newtownhamilton	10	5	5	5	0
Quoile	15	5	5	10	5
Rostrevor	10	10	10	5	15
Saintfield	15	5	10	15	10
St. Patrick's	10	10	10	5	5
Strangford	10	5	5	5	5
Tollymore	10	10	5	5	5
Warrenpoint	5	0	10	5	5
Whitecross	5	5	0	5	10

The table shows that 5 of the 41 wards had the highest number of people qualifying in medicine, dentistry and subjects allied to medicine with 15 including Ballydugan, Burren, Knocknashinna, Quoile and Sainfield.

Saintfield had the highest number of persons (20) with HE qualifications in social studies and law while Derryleckagh had the highest number in business administration, mass communication and documentation with 20.