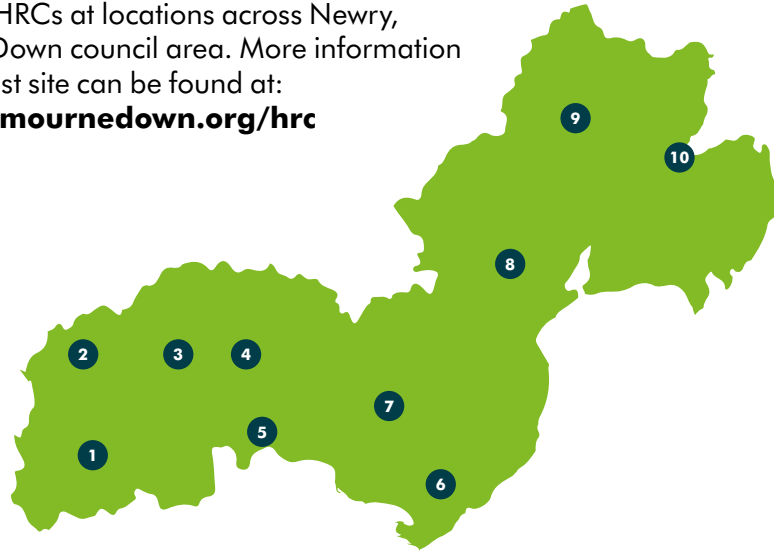


Your Household Recycling Centres

There are 10 HRCs at locations across Newry, Mourne and Down council area. More information on your nearest site can be found at:
www.newrymouredown.org/hrc



- | | |
|---|--|
| 1 Crossmaglen HRC
Newry Road, Crossmaglen | 6 Kilkeel HRC
Ballymageogh Road, Kilkeel |
| 2 Newtownhamilton HRC
Newry Road, Newtownhamilton | 7 Hilltown HRC
Rostrevor Road, Hilltown |
| 3 Camlough HRC
Quarter Road, Camlough | 8 Castlewellan HRC
Bann Road, Castlewellan |
| 4 Newry HRC
Moorhill, Chapel Road, Newry | 9 Ballynahinch HRC
Ballykine Industrial Estate, Ballynahinch |
| 5 Warrenpoint HRC
Upper Dromore Road, Warrenpoint | 10 Downpatrick HRC
42 Flying Horse Road, Downpatrick |

Please follow instruction from our staff - they are there to help you recycle correctly. Verbal and physical abuse will not be tolerated.



For more information about Household Recycling Centres visit:
www.newrymouredown.org/hrc or call: **0330 137 4047**

Follow us on:  /nmdcouncil  @nmdcouncil

Your guide to the Household Recycling Centres

Sort
your
waste



 **Newry, Mourne and Down recycles**

Ag freastal ar an Dún
agus Ard Mhacha Theas
Serving Down
and South Armagh



Comhairle Ceantair
an Iúir, Mhúrn agus an Dúin
Newry, Mourne and Down
District Council

Why we want you to recycle more at HRCs

People in Northern Ireland are recycling more and more each year. In 2018 Northern Ireland sent 48% of materials for re-use or recycling which is great news, but we need to do more to meet UK targets to recycle 65% of our waste by 2035.

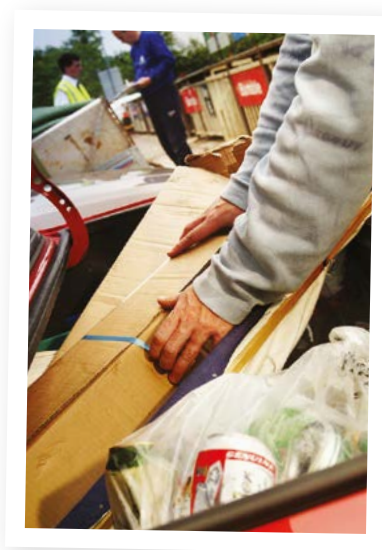
In our District, we currently recycle 51%, of our waste but a recent study of our Household Recycling Centres (HRCs) found that much of the waste that goes into waste containers could be recycled. Recycling more will mean reducing the cost of landfill and helps benefit businesses in Northern Ireland who rely on our recycled paper, glass, plastic, food waste and many other materials.



What this means for you

Council policy states that anyone visiting a HRC will be expected to have pre-sorted their household waste for re-use and recycling. Our site staff will advise you about which containers to use for recycling and waste disposal. This may include staff asking you to open bags to show that they do not contain recyclable materials. **Disposal of recyclable items in waste skips is no longer permitted.**

Please retain this guide which lists the wide range of materials that can be recycled at your local HRC.



What you need to do when visiting your Household Recycling Centre

To make your trip to the Household Recycling Centre (HRC) as quick and easy as possible please follow the simple steps below:

- S** **Sort** recyclable and non-recyclable materials at home. Disposal of recyclable items in waste skips is no longer permitted;
- O** **Organise** your recyclables and waste in your vehicle so that when you visit the HRC you can place items in the correct containers. This will make your visit much quicker;
- R** **Re-use** many items such as furniture, clothes and bicycles are too good to throw away and could be donated to charity. Consider this option before you visit us. Re-use containers now available at a number of HRCs;
- T** **Talk** to our staff – if you are unsure about what can and cannot be recycled please ask, our staff will provide advice on which container to use.

A wide range of materials can be recycled at your HRC:

cardboard	paper	books	wood & timber
hard plastics	mixed textiles & clothes	cooking oil	mattresses coming soon
car batteries	scrap metal	household metal packaging	mixed glass bottles & jars
garden waste	large appliances	batteries	small appliances
printer cartridges	fridges & freezers	mixed light bulbs	tvs & monitors

Important! The disposal of some items e.g. paint/oil is restricted. For health and safety reasons wheelie bins cannot be emptied on site.



Please check what materials are accepted at your local HRC by visiting www.newrymournedown.org/hrc