

## **SLIEVE GULLION CANDIDATE AREA OF SIGNIFICANT ARCHAEOLOGICAL INTEREST**



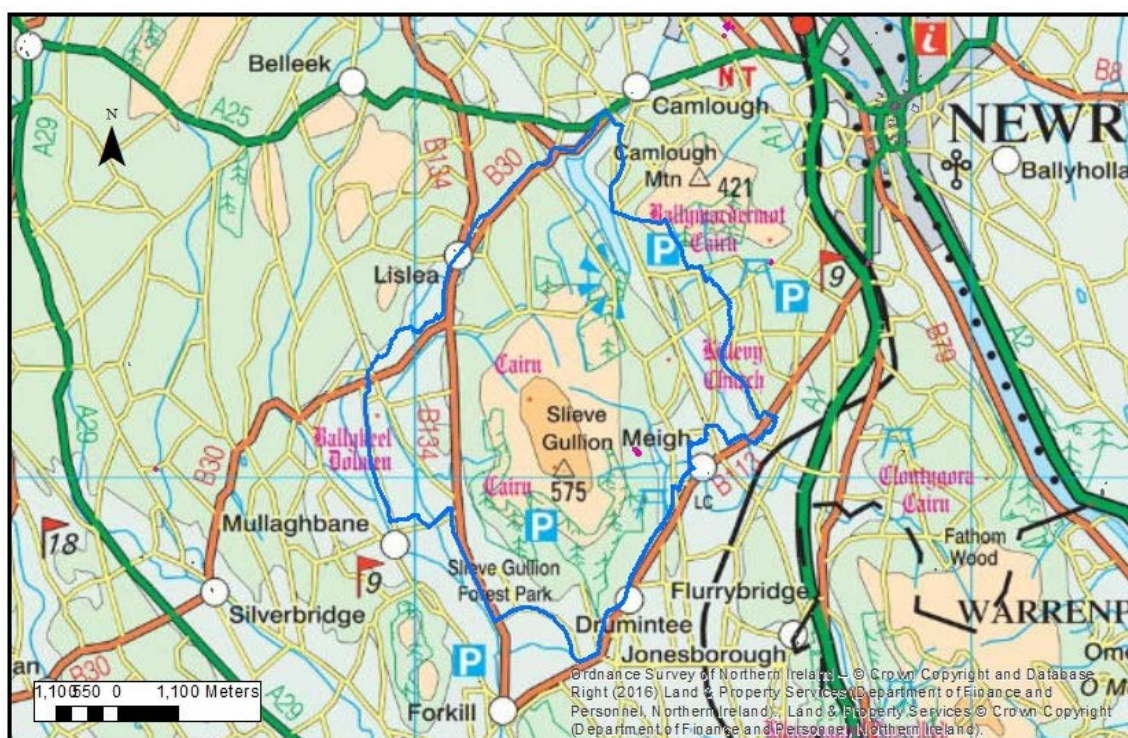
Prepared by DfC Historic Environment Division  
Heritage Records and Designations Branch

## Contents

1. Preamble
2. Statement of Significance
3. Map
4. Selected imagery
7. Lists of Heritage Assets which lie inside the candidate ASAI

## Preamble

On 25<sup>th</sup> July 2017 Department consulted its statutory advisory body, the Historic Monuments Council on the identification of an Area of Significant Archaeological Interest at Slieve Gullion. This ASAI was identified following desktop research and field survey carried out by Historic Environment Division. This statement relates to the entirety of the ASAI heritage asset.



## **Statement of Significance**

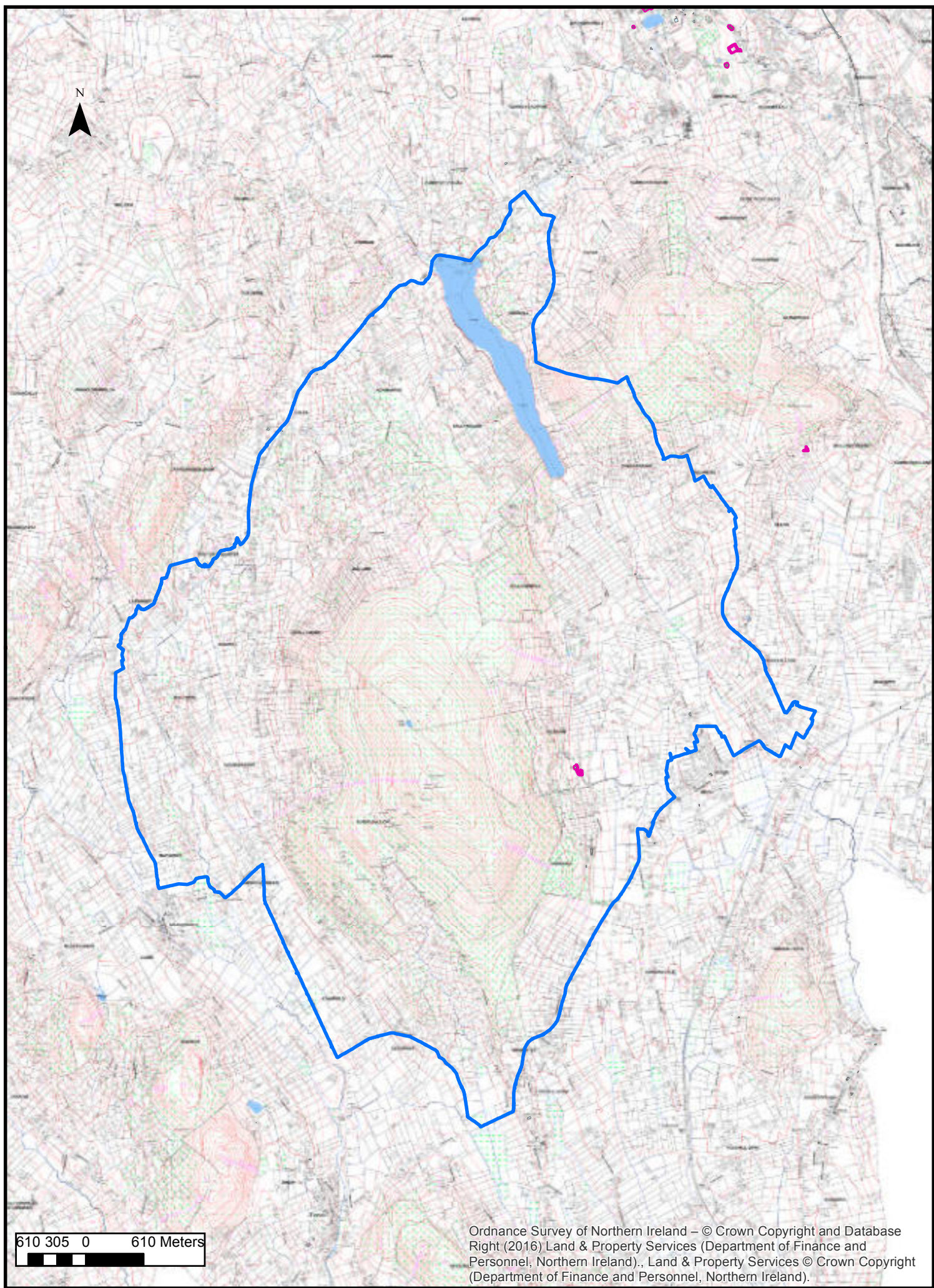
### **Slieve Gullion**

An Area of Significant Archaeological Interest has been identified at Slieve Gullion. The mountain, which is dominated by two prehistoric burial monuments in State Care, is an iconic feature of the landscape of southern County Armagh, and offers far reaching vistas from its summit across the surrounding ring dyke, which although outside the ASAI boundaries, forms a key part of the setting of the monuments within it.

The views from the massive and conspicuously sited South Cairn, a passage tomb, which survives to a height of almost 4m and whose passage is aligned on the winter solstice sunset, are extensive. The landscape around the base of Slieve Gullion contains a high density of surviving prehistoric burial monuments. These, as a grouping, are an important and relatively rare survival in the County Armagh context. The various heritage assets within the ASAI have discrete and overlapping settings and their significance is enhanced by their relationships with each other and with the surrounding environment, including its distinctive topography, waterways, routeways and skylines. They have played an important part in the evolution of the landscape character here and along with some of its historic natural characteristics have exerted an influence on place names.

The landscape within the Slieve Gullion ASAI is sensitive to development that would adversely affect its distinctive characteristics. The erection of masts, pylons, turbines or associated infrastructural work, or other large scale development including large agricultural sheds, or quarrying and mining activities within the distinctive landscape or immediately adjacent would adversely impact the landscape character and the contribution it makes to the setting, experience and enjoyment of the heritage assets within it.





Ordnance Survey of Northern Ireland – © Crown Copyright and Database Right (2016) Land & Property Services (Department of Finance and Personnel, Northern Ireland)., Land & Property Services © Crown Copyright (Department of Finance and Personnel, Northern Ireland).





*1. The summit of Slieve Gullion was deliberately chosen to be the location for the massive passage tomb monument and for a multiple cist cairn. The location gave these prehistoric monuments a prestige and emphasis in the surrounding landscape*



*2. The views from the passage tomb, whose entrance is aligned on the midwinter solstice sunset, are extensive and extend across the surrounding ring dyke*



Department for  
**Communities**  
[www.communities-ni.gov.uk](http://www.communities-ni.gov.uk)

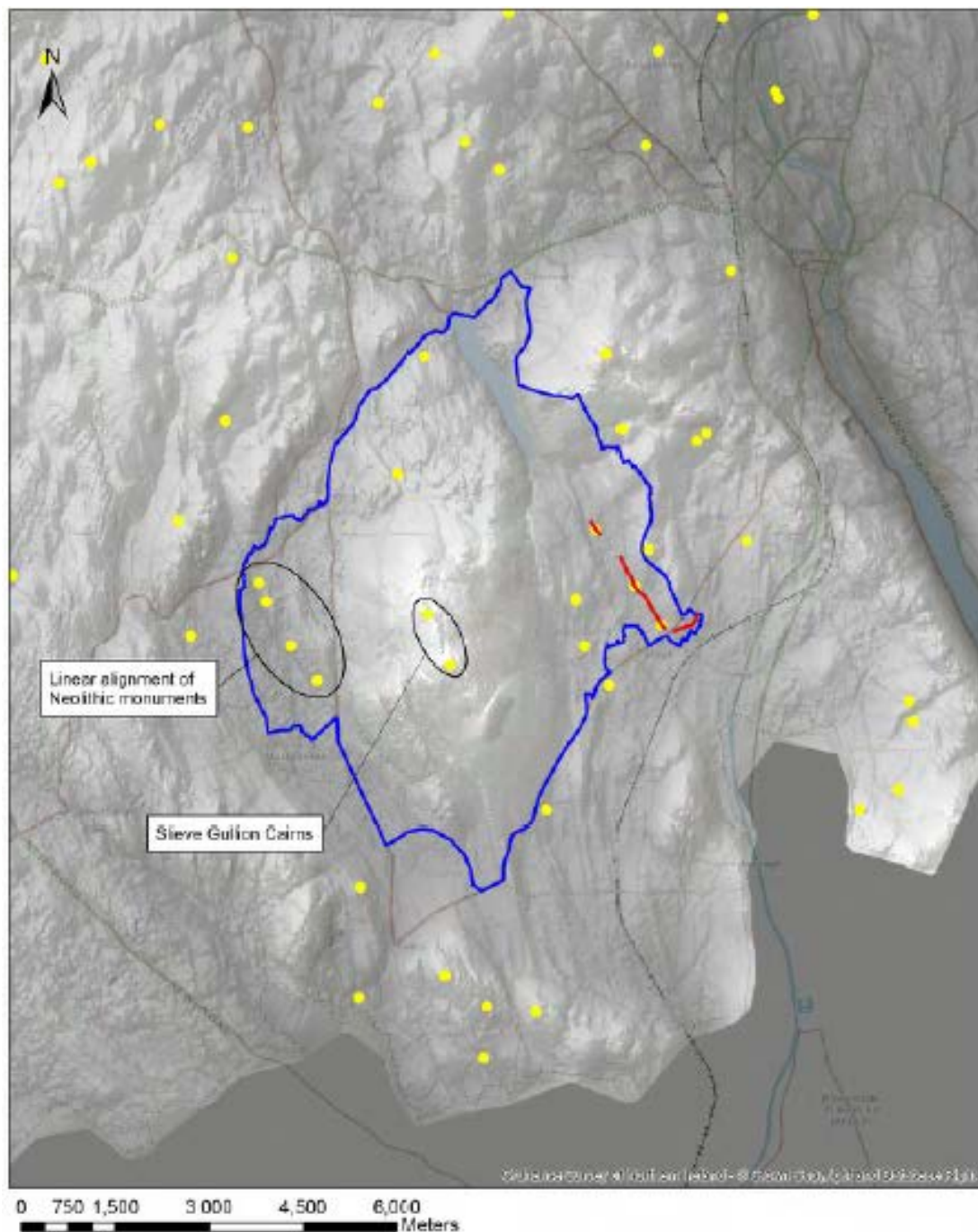




**3** *The landscape around the base of Slieve Gullion contains a high density of surviving prehistoric burial monuments. These, as a grouping, are an important and relatively rare survival in the County Armagh context.*



**4.** *The various heritage assets within the ASAI have discrete and overlapping settings and their significance is enhanced by their relationships with each other and with the surrounding environment, including its distinctive topography, waterways, routeways and skylines*



### Slieve Gullion ASAI

- Dane's Cast
- Prehistoric SMR sites

5. This map considers known prehistoric heritage assets within and also outside the ASAI



Department for  
**Communities**  
[www.communities-ni.gov.uk](http://www.communities-ni.gov.uk)

# Sites and Monuments Records within Slieve Gullion ASAI 8<sup>th</sup> October 2018

NISMR	TYPE	PROTECTION	TOWNLAND(s)	GRID REF	
ARM025:009	CASHEL AND PORTAL TOMB: THE LONG STONES	Scheduled	AGHMAKANE	J0205025250	
ARM025:022	SOUTERRAIN		AGHMAKANE	J0204024910	
ARM026:016	CRANNOG (submerged) in CAMLOUGH RESERVOIR		AGHMAKANE; KEGGALL	J0278025590	
ARM028:005	STANDING STONE, possibly MEGALITHIC TOMB		AUGHADANOVE	J0034020070	
ARM028:006	MULTIPLE CIST CAIRN: NORTH CAIRN	State Care	BALLARD; SLIEVE GULLION	J0210021130	
ARM028:007	PASSAGE TOMB: SOUTH CAIRN; AILLEACH BEARAS HOUSE	State Care	SLIEVE GULLION	J0246020320	
ARM028:015	SOUTERRAIN: SHANKILL		CLOGHINNY	J0260017680	
ARM028:019	ENCLOSURE		LONGFIELD	J0134018760	
ARM028:020	PORTAL TOMB IN LONG CAIRN WITH CIST: BALLYKEEL DOLMEN	State Care and Scheduled	BALLYKEEL	H9952621329	
ARM029:001	LINEAR EARTHWORK: THE DANES CAST (PART OF)	Scheduled	BALLINLISS	J0479022480	
ARM029:002	EARLY CHRISTIAN & MEDIEVAL CHURCHES, GRAVEYARD, AUGUSTINIAN NUNNERY & ROUND TOWER: KILLEVEY CHURCHES	State Care	BALLINTEMPLE	J0401922067	
ARM029:003	HOLY WELL: SAINT BLINES WELL		BALLINTEMPLE	J0364021820	
ARM029:004	COURT TOMB: NORTH CAIRN	State Care and Scheduled	CLONLUM	J0447021360	
ARM029:008	CASHEL		AGHAYALLOGE	J0592021200	



ARM029:015	ENCLOSURE (rath) & SOUTERRAIN (unlocated)		BALLINTEMPLE	J0408022150
ARM029:016	LINEAR EARTHWORK: THE DANES CAST (PART OF)	Scheduled	AGHAYALLOGE	J0584020940
ARM029:018	SOUTERRAIN		AGHAYALLOGE	J0595020880
ARM029:037	SOUTERRAIN: KILL-OGUEY		TAMNAGHBANE	J0432023610
ARM029:040	ENCLOSURE (unlocated)		BALLINLISS	J0500023000
ARM029:005	ROUND CAIRN WITH PORTAL TOMB: SOUTH CAIRN	State Care and Scheduled	CLONLUM	J0460420616
ARM028:001	STANDING STONE: THE LONG STONE	Scheduled	BALLARD	J0162723370
ARM028:002	MEGALITHIC TOMB: GIANT'S GRAVE	Scheduled	LATBIRGET	H9940821636
ARM028:004	PORTAL TOMB: THE OUL' GRAVE	Scheduled	AUGHADANOVE	H9991820624
ARM028:014	CHURCH SITE & CROSS-CARVED BOULDER: THE SHANKILL	Scheduled	CLOGHINNY	J0254817678
ARM029:014	LINEAR EARTHWORK: THE DANES CAST (PART OF)	Scheduled	SEAFIN	J0540921579



Department for

**Communities**

[www.communities-ni.gov.uk](http://www.communities-ni.gov.uk)

### Historic Buildings Records within Slieve Gullion ASAI 8<sup>th</sup> October 2018

HB REF	DATE CONSTRUCTED	EXTENT	GRID REF	GRADE/STATUS
HB16/13/001 B	1820 - 1839	Stables	J0403 2046	B2
HB16/13/021 A	1860 - 1879	Post Office	J0539 2044	Record Only
HB16/13/024	1800 - 1819	House	J0459 2255	Record Only
HB16/13/025	1840 - 1859	Church	J0517 2106	B2
HB16/15/002 A	1920 - 1939	House	J0407 1946	Record Only
HB16/15/002 B	1800 - 1819	Farm Buildings	J0413 1963	B2
HB16/19/014		Pembroke House	J0086 2406	B2
HB16/19/020	1820 - 1839	House	J0122 2467	B1
HB16/13/001	1820 - 1839	Killevy Castle	J03952051	A

### Industrial Heritage Records within Slieve Gullion ASAI 8<sup>th</sup> October 2018

IHR REF	TOWNLAND	TYPE	GRID REF
00525:000:00	Lislea	Creamery	J00872407
00526:000:00	Lislea	Corn Mill (later a Flax Mill) site	J01172402
00541:000:00	Carrickcloghan / Keggall	Lock Houses, Sluices & Reservoirs	J02982592
00575:000:00	Doctors Quarter / Levallymore	Bridge	J00532262
00582:000:00	Ballykeel / Latbirget	Bridge	H99372148
00583:000:00	Ballykeel	Corn Mill site	H99392146
00584:000:00	Ballykeel	Flax Mill	H99412143
00598:000:00	Ballykeel	Corn Kiln	H99372145
00600:000:00	Ballinliss	Corn Mill site	J04572335





**Historic Parks Gardens, Demesnes within Slieve Gullion ASAI 8<sup>th</sup> October 2018**

REF_NO	SITE	STATUS
A-020	HAWTHORN HILL	SUPPLEMENTARY
A-041	KILLEVY CASTLE	REGISTER

**Battlesites within Slieve Gullion ASAI 8<sup>th</sup> October 2018**

BATTLE	YEAR	SIDEA	SIDEB	GRIDREF	MAIN_REF
Cill- sleibhe :Killeavy	1029	Donnachadh Ua Donnagain, Lord of Fernmhagh	Cinaedh son of Angeirrce, Lord of Conailli	J040220	AFM, Vol 2, p817



Department for

**Communities**[www.communities-ni.gov.uk](http://www.communities-ni.gov.uk)