

## **NEWRY, MOURNE & DOWN DISTRICT COUNCIL**

**NMC/SC**

---

### **Minutes of Special Council Meeting held on 25 June 2018 at 6pm in the Mourne Room, Downshire Civic Centre, Downpatrick**

---

**In the Chair:** Councillor Murnin

**In attendance:**

**(Councillors)**

Councillor T Andrews	Councillor R Burgess
Councillor P Byrne	Councillor C Casey
Councillor W Clarke	Councillor G Craig
Councillor D Curran	Councillor S Doran
Councillor H Harvey	Councillor T Hearty
Councillor R Howell	Councillor M Larkin
Councillor K Loughran	Councillor J Macauley
Councillor D McAteer	Councillor R Mulgrew
Councillor B Ó Muirí	Councillor B Quinn
Councillor M Ruane	Councillor G Stokes
Councillor D Taylor	Councillor W Walker

**(Officials)**

Mr L Hannaway, Chief Executive  
Mr J McBride, Assistant Director Community Planning & Performance  
Mr A Beggs, Head of Evidence and Research  
Ms V Keegan, Head of Communications and Marketing  
Mrs D Starkey, Democratic Services Officer  
Ms S Taggart, Democratic Services Officer

**Also in attendance:** Mr P McGinn and representatives from Cuan Mhuire  
Mr M Gracey, South Eastern Health & Social Care Trust  
Mr E Sipler, South Eastern Health & Social Care Trust

**SC/22/2018**

### **APOLOGIES AND CHAIRPERSON'S REMARKS**

Apologies were received from Councillors Bailie, Carr, Devlin, Enright, Fitzpatrick, Hanna, Harte, Kimmins, McMahan, McMurray, Savage, Sharvin, Stokes, Tinnelly and Trainor.

Apologies were also received from Mr K Morton, Southern Health & Social Care Trust.

**SC/23/2018**

### **DECLARATIONS OF INTEREST**

There were no Declarations of Interest.

**SC/24/2018**

**PRESENTATION BY CUAN MUIRE RE: IMPACT OF GAMBLING IN THE LOCAL AREA**

The Chairman welcomed the representatives from Cuan Mhuire to the meeting and invited them to give their presentation on the impact of gambling.

Mr Pat McGinn thanked Members for the opportunity to meet with Council and outlined the role of Cuan Mhuire in the treatment of alcohol, drug and gambling addiction since its formation by Sister Consolio in 1966.

Members were advised that Cuan Mhuire had 650 people in houses for treatment throughout Ireland at this time.

Mr McGinn stressed gambling addiction was becoming more prevalent with Cuan Mhuire seeing an increase in people coming to their house seeking help for this addiction. He appealed to Members to examine Council policies regarding licensing for gambling premises.

Mr Murphy, a support worker for Cuan Mhuire then spoke of his own experience of gambling addiction and the help he received to overcome his addiction. He spoke of the correlation between gambling addiction and suicide.

During the presentation the importance of prevention and the work being undertaken through a schools programme was outlined. Mr Murphy referred to new legislation passed in the UK for fixed odd terminals and pointed out that this legislation was not in place here and highlighted the need for MLAs to be back in Stormont.

Mr McGinn issued an open invitation to all elected representatives and Officers to visit the Cuan Mhuire Centre, Newry at any time.

**Councillor McAteer joined the meeting during the above discussion – 6.20pm.**

**SC/25/2018**

**REPRESENTATIVES FROM SOUTH EASTERN TRUST & SOUTHERN TRUST RE: ADDICTIONS**

The Chairman welcomed Mr E Sipler (Health Development/Addiction Services) and Mr M Gracey (Addictions Services Manager) from the South Eastern Health & Social Care Trust.

Mr Sipler and Mr Gracey thanked the Chairman for the invitation to attend the meeting and gave some background to the work undertaken regarding addictions by the South Eastern Health & Social Care Trust. (copy of the presentation attached to these minutes).

During the presentation the following points were noted:

- New Strategic Directions for Alcohol and Drugs document was currently being reviewed with a draft Strategy needing to be signed off by Government. A Tier '0' was required on prevention (as presently it was a four tier model, 1-4).
- Copies of a Guide to Local Alcohol & Drug Services were provided for Members.

- South Eastern Health & Social Care Trust was the only Trust to offer the 'Alcohol and You' tools to assist with early prevention through a website and self-help materials.
- There was higher density of addiction in deprived areas and the Trust had a Drug and Alcohol Co-ordination Team which was keen to work with Council.
- There was a need for alcohol free social outlets within the District.
- There was a requirement for prevention of drug, alcohol and self-harm abuse with young people at home and in schools.
- Prescription drug misuse was also a real problem and required further investment.

Following the presentation the following points were highlighted:

- Supporting People, Department for Communities was the core funder for Cuan Mhuire with the Health Service now on board.
- Addiction was a lifelong illness which required lifelong support.
- The importance of prevention and ensuring people know and are aware of what services are available.
- A need for the stigma of addiction to be broken.

**Councillors Burgess, Clarke, Taylor, Ó Muiri and Hearty left the meeting during the above discussion – 6.46pm, 6.58pm, 7.00pm, 7.11pm and 7.12pm respectively.**

Read: Report from Mr A Beggs, Head of Evidence and Research dated 25 June 2018, entitled Data outlining the Misuse of Prescription Medication in Newry, Mourne and Down was noted. (copy circulated)

Mr Hannaway suggested Members of the Community Planning Health & Wellbeing Thematic Working Group should focus on alcohol, drug, gambling and prescription addiction in promoting the health and wellbeing of people within the District.

**There being no further business, the meeting concluded at 7.15pm.**

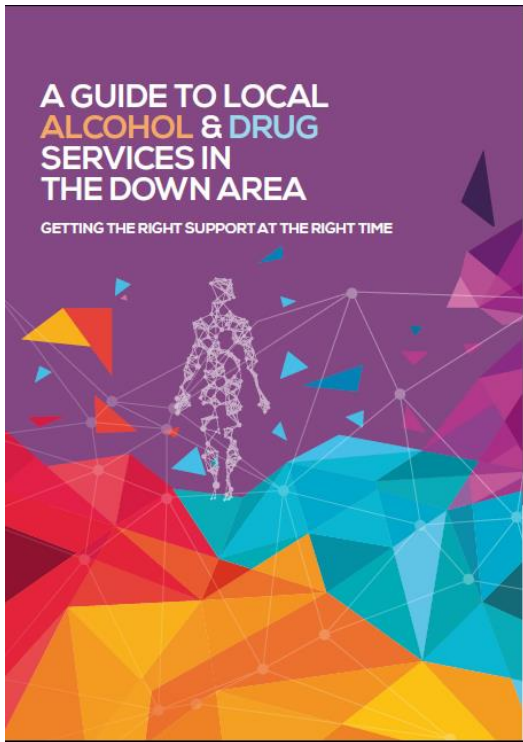
For confirmation at Meeting of Newry, Mourne and Down District Council to be held on Monday 6 August 2018.

**Signed:**

\_\_\_\_\_  
**Chairman**

\_\_\_\_\_  
**Chief Executive**

# Alcohol and drugs Working Together



## Ed Sipler

- Health Development/Addiction services

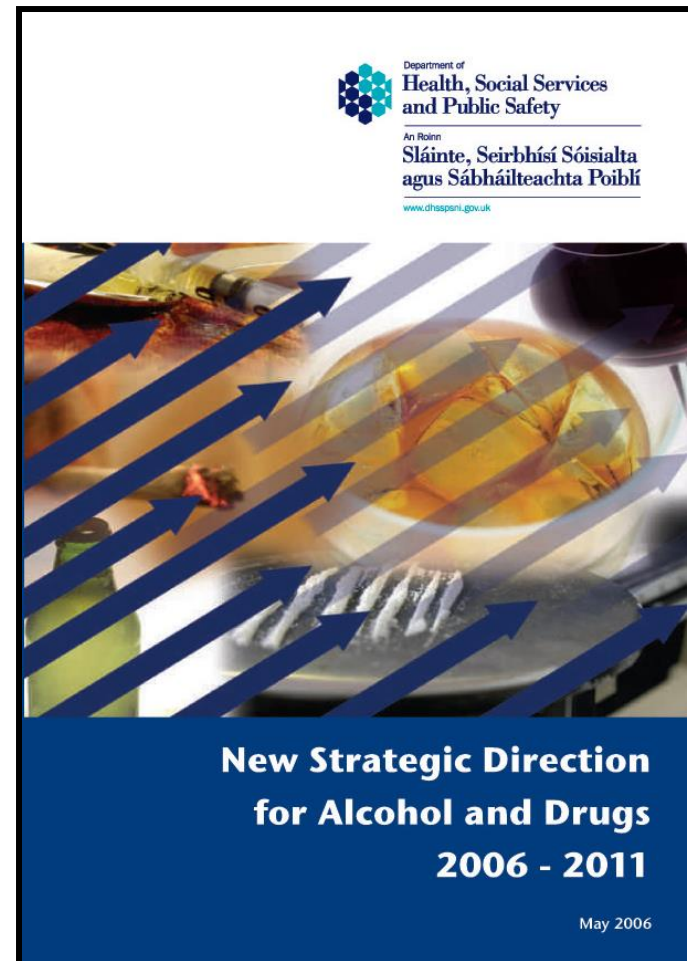
Michael Gracy

- Addictions Service Manager

Alcohol and drug misuse ( and all addictions)  
is an an emotive issue  
So what are we doing

# The NSD recommended a Four Tier model based on a stepped care approach

- **Tier 1: Non-substance misuse specific services**
- **Tier 2: Open access drug and alcohol treatment services**
- **Tier 3: Structured community based drug treatment services**
- **Tier 4: Residential services for drug and alcohol misusers**



# Four tier model: who fits where?

- **TIER 1 SERVICES**

Primary Care Services, Health Promotion, Accident & Emergency, Probation, General Psychiatry,

- **TIER 2 SERVICES**

Community alcohol and drug services, Brief Interventions, Outreach Services, work with vulnerable groups

- **TIER 3 SERVICES**

Community Addiction Teams, Substitute Prescribing

- **TIER 4 SERVICES**

Detox, Inpatient and Residential services

# The PHA funded services Building the rungs of a stepped care approach

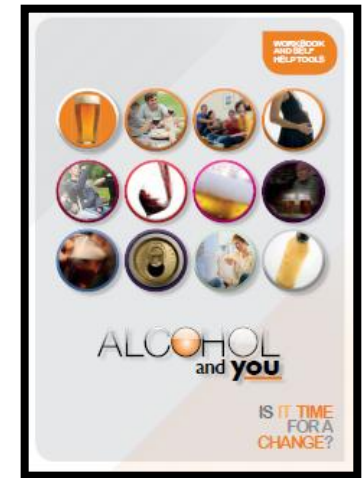
Step 4 Residential treatment

Step 3 ( more intensive support)

Step 2 ( earlier intervention with family support )

Low threshold Harm reduction work

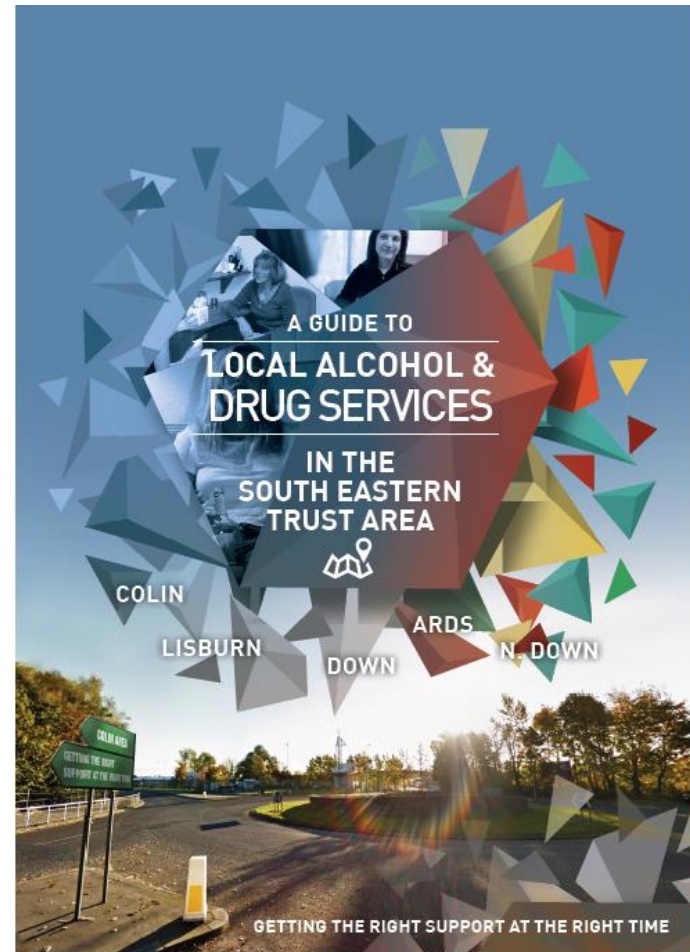
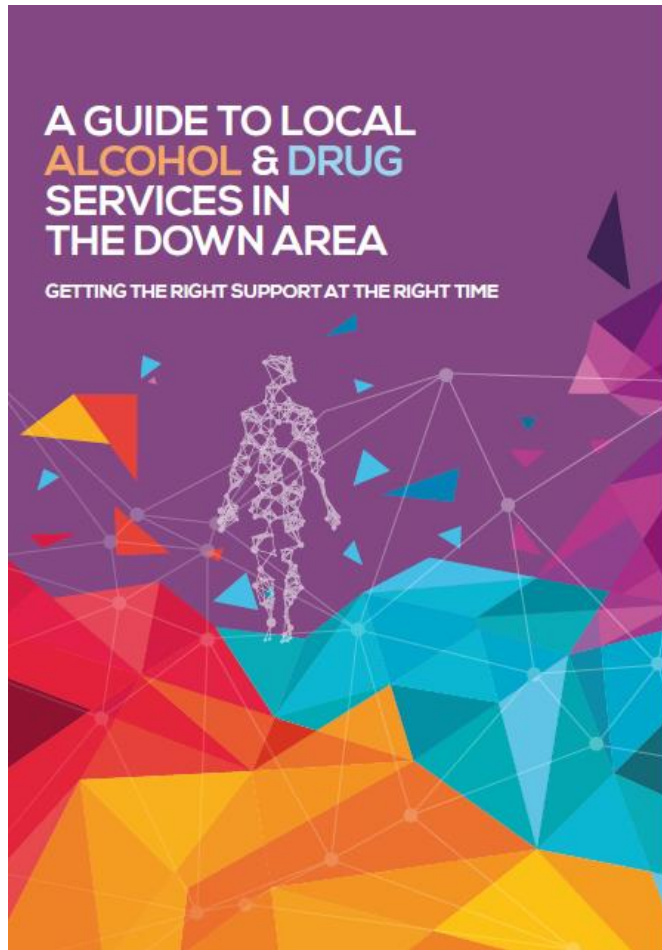
self help [www.alcoholandyouni.com](http://www.alcoholandyouni.com)





How do we make it clear to the public and our workforce of what support is out there?

We have produced “a roadmap to services”



# Developing the roadmap for the whole Trust



# Pathway to these services

## Referral pathway for adult alcohol and drug treatment services in the South Eastern Trust area: A stepped care approach

### Screening will help direct the level of need

Practitioners within-a community setting should screen using the AUDIT C and Full AUDIT or Leeds Dependence Questionnaire (LDQ) to identify level of problematic drinking, deliver brief advice and refer to appropriate services if more help is needed

### Scoring the Audit

0 - 7	8 - 15	16 - 19	20 +
Low risk	Hazardous	High risk	Harmful

Low risk: Hazardous use  
Self-help

Brief Advice tools

Self-help workbooks

Self-help website

### Referring for further help when needed

#### Low threshold service

Not ready to change

Harm reduction approach

The Link

Simon Community

#### Step 2 service

Hazardous use / High Risk / Harmful signs of mild to moderate dependence

Dunlewey Alcohol and You

DAISY - 18 - 25 year olds

#### Step 3 service

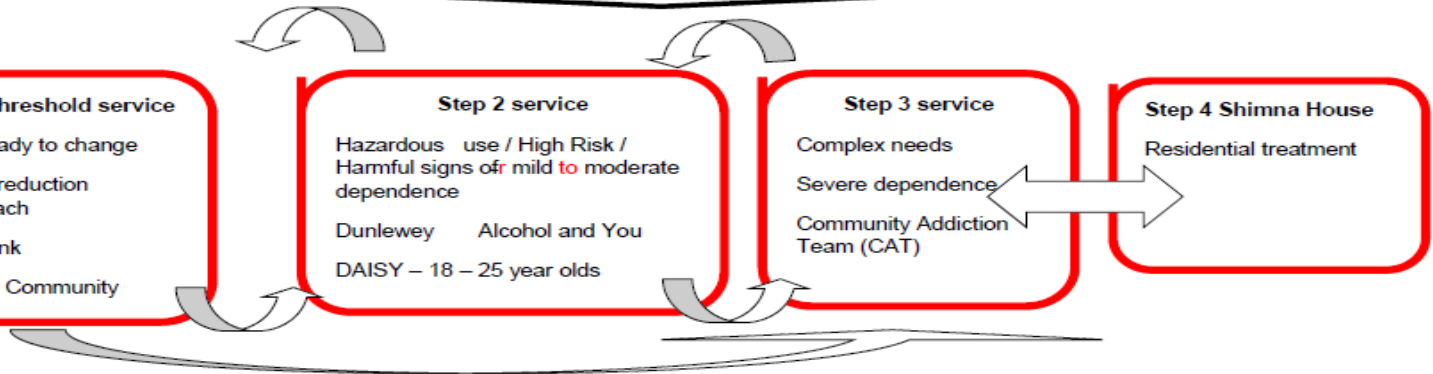
Complex needs

Severe dependence

Community Addiction Team (CAT)

#### Step 4 Shimna House

Residential treatment



# The legacy from Alcohol and You Tools and processes that will support a population approach

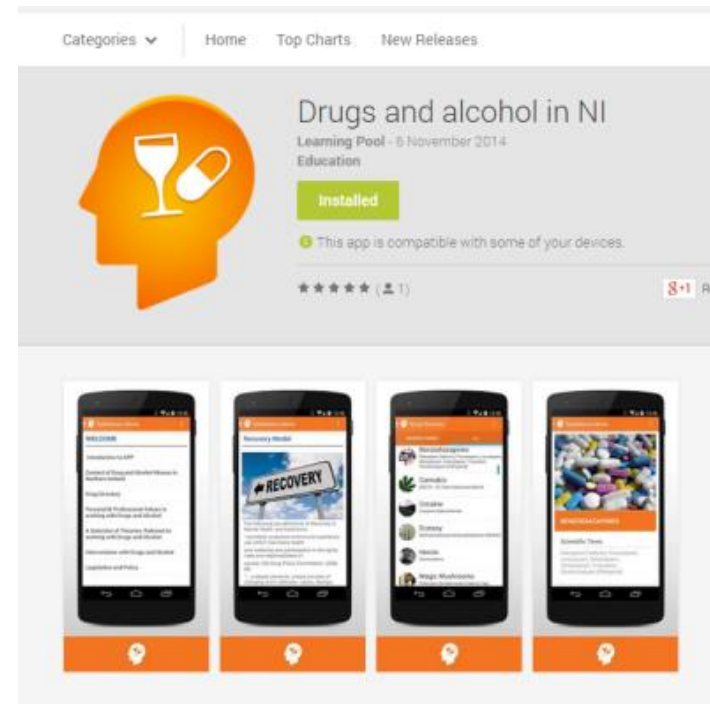
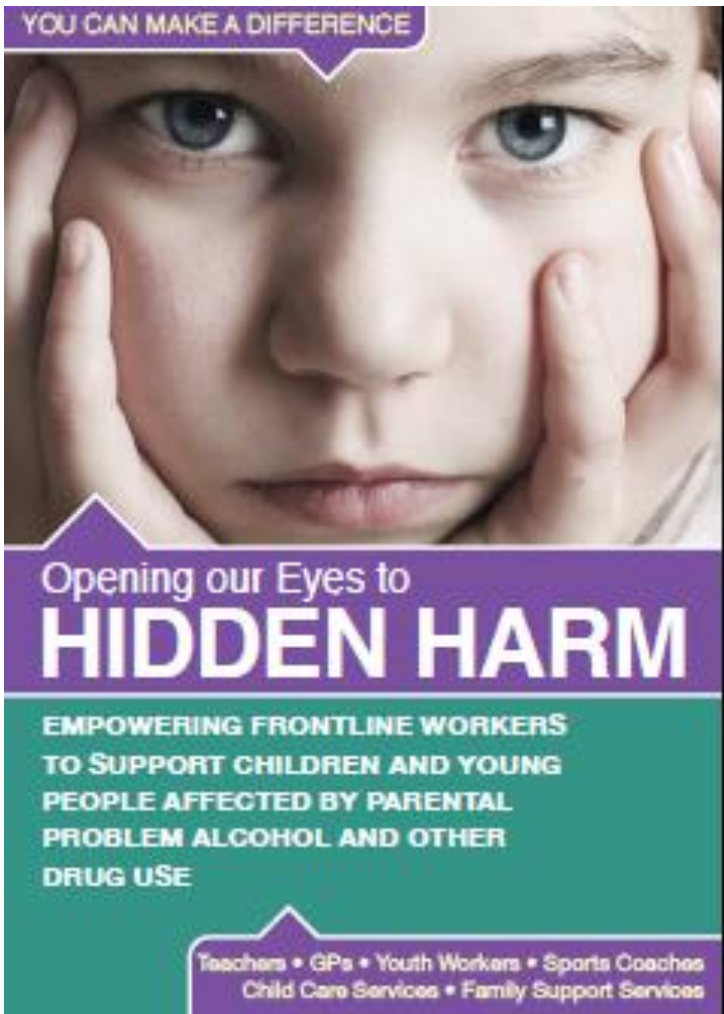


The website: a cost effective means of encouraging change?  
-At an estimated £0.35 per visit (2)  
-Far reaching 26,000+ visitors  
-52% of a sample felt it would make them reduce their alcohol

Brief Advice Tools with identified BCT's which give out workforce resources to have conversations about people's drinking in a range of settings with 89000 in circulation across NI

A self help workbook with identified BCT's. Self help has been shown to be an effective rung on the stepped care ladder with over 55 000 in print across NI

# Training our workforce is a significant endeavour



Look for alcohol and drugs in Northern Ireland in the App store or Google play

The Connections Service are the operational arm of our Drug and Alcohol Coordination Teams and can support you across our council area

- *“We can provide information and guidance around drug and alcohol related issues and link people or organisations to sources of help and support”*

[www.drugsandalcoholni.info](http://www.drugsandalcoholni.info)



# What else are we working on?


\* *Missed Opportunities* Nov.2016 suggests more attention should be made of the physical effects of alcohol.

\* The Alcohol and You Team is undertaking developing a series of downloadable fact sheets on their website that can be used across all settings when working with people across a range of conditions.

\* All councils have reducing preventable deaths in their community plans . Multi designed processes for disseminating these fact sheets can make a contribution to this.

\* We also have an ARBD aspect to residential treatment

FACT SHEET  
01



ALCOHOL  
and you

## ALCOHOL RELATED BRAIN DAMAGE (ARBD)

This fact sheet will help you get a better understanding of Alcohol Related Brain Damage, how it can present, what causes it and how someone with ARBD can be helped. There is also information for family members.

Visit: [alcoholandyou.ni.com](http://alcoholandyou.ni.com) Call: 0800 2545 123



PAST  
PRESENT  
AND  
FUTURE



# Thanks for having us today

We hope this was helpful

[ed.sipler@setrust.hscni.net](mailto:ed.sipler@setrust.hscni.net)

