



January 24th, 2020

Notice Of Meeting

You are requested to attend the Council meeting to be held on **Monday, 27th January 2020** at **6:00 pm** in **Mourne Room, Civic Centre Downpatrick.**

Agenda

1.0 Apologies and Chairperson's Remarks

2.0 Declarations of Interest

Presentations

3.0 Presentation from Northern Ireland Electricity

Attendees:

Mr David Keys - Customer Service Manager

Mr Ian Bailie - Network Development Manager

Ms Edel Creery - Head of Communications & Stakeholder Engagement

📎 ***Meeting with NIE Networks and Newry Mourne and Down District Council Jan 2020 v03.pdf***

Page 1

4.0 NIW - Update on infrastructure challenges

Ronan Larkin, Director of Finance and Regulation, NI Water (confirmed)

Grahame Millar, Head of Wastewater Infrastructure Delivery, NI Water (confirmed)

Northern Ireland Water have asked if the focus of the meeting could be kept to the strategic issues and that any constituent issues are referred to the **ELECTED REPRESENTATIVE HOTLINE: 0345 300 6461**. This is a 24/7 number, every question/query/issue is logged and tracked.

📎 ***PC21 Briefing - NMD publish.pptx***

Page 24

Invitees

Cllr Terry Andrews

Cllr Patrick Brown

Cllr Robert Burgess

Cllr Pete Byrne

Mr Gerard Byrne

Mrs Dorinnia Carville

Cllr charlie casey

Cllr William Clarke

Cllr Dermot Curran

Cllr Laura Devlin

Ms Louise Dillon

Cllr Sean Doran

Cllr Cadogan Enright

Cllr Hugh Gallagher

Cllr Mark Gibbons

Cllr Oonagh Hanlon

Cllr Glyn Hanna

Cllr Valerie Harte

Cllr Terry Hearty

Cllr Roisin Howell

Mrs Sheila Kieran

Cllr Mickey Larkin

Cllr Alan Lewis

Mr Michael Lipsett

Cllr Oonagh Magennis

Mr Conor Mallon

Cllr Gavin Malone

Cllr Cathy Mason

Cllr Declan McAteer

Colette McAteer

Aoife McCreesh

Cllr Leeanne McEvoy

Cllr Harold McKee

Patricia McKeever

Cllr Karen McKevitt

Cllr Andrew McMurray

Mr Roland Moore

Cllr Roisin Mulgrew

Cllr Barra Ó Muirí

Linda O'Hare

Cllr Gerry O'Hare

Cllr Kathryn Owen

Cllr Henry Reilly
.....
Cllr Michael Ruane
.....
Cllr Michael Savage
.....
Cllr Gareth Sharvin
.....
Donna Starkey
.....
Cllr Gary Stokes
.....
Sarah Taggart
.....
Cllr David Taylor
.....
Cllr Jarlath Tinnelly
.....
Cllr John Trainor
.....
Cllr William Walker
.....
Mrs Marie Ward
.....



NIE Networks & Newry Mourne and Down District Council

27th January 2020

Electricity Market Structure in Northern Ireland

Generation



Large thermal



Renewables
Interconnectors

Generators sell energy into the SEM wholesale market

Transmission



Distribution



Transmission system:
Owned by NIE Networks
Operated by SONI

NIE Networks transports energy from Generators to end customers

Supply



Others

Suppliers buy energy from the wholesale market & sell to customers

Customers



NIE NETWORKS: THE ELECTRICITY NETWORKS BUSINESS IN NORTHERN IRELAND



Network
Maintenance &
Development



Connections



Connecting
Renewables



Meter reading



Power cuts

WORK TOGETHER TO ADDRESS COUNCIL PRIORITIES

DELIVERING FOR
THE CUSTOMER



THE FUTURE OF ENERGY



COUNCIL PLANS



We are investing in your area...



Category	Detail
Network Reinforcement	(5 projects)
Network Refurbishment	Substation plant and switchgear (5 projects)
	Overhead lines (702km)
	Subtotal
Total Costs	£6m

Investment in Newry, Mourne and Down during RP6 (up to March 2024)

CUSTOMER FOCUS: IMPROVING PROCESS TO ENABLE DEVELOPMENT



6



ENGAGING
WITH OUR
CUSTOMERS



REDUCE
TIME & COST



BESPOKE
CONNECTION
SOLUTIONS



REGIONAL
PRESENCE



KEY ACCOUNT
MANAGEMENT

OUR ASK



EARLY
ENGAGEMENT TO
ADD VALUE

RAISE AWARENESS
OF INFRASTRUCTURE
IMPACT

NIE NETWORKS
INCLUDED AS NON-
STATUTORY CONSULTEE

SIGNPOST
DEVELOPERS TO NIE
NETWORKS

Customer Focus: Weather Ready – Preparation and Resource



7

- Emergency Plan reviewed annually and always post an event
- 10,000 critical care customer contacted annually
- Powercheck tool developed to give public near-real time information in their area
- 12 Local Incident Centres across Northern Ireland
- Winter Ready Campaign launched each year – use traditional press, digital media, radio
- We write to Councils to remind Councillors of their Hotline Number
- Staff receive refresher training
- Storm simulations completed every year
- All employees have a storm role but we can use ESB and GB resources through agreement
- The Critical National Infrastructure Provider (CNIP) Mutual Aid Protocol



CUSTOMER FOCUS: PROTECTING VULNERABLE CUSTOMERS

MEDICAL CUSTOMER CARE REGISTER

- Information service for customers who depend on life supporting electrical equipment
- c10,000 customers on our Medical Customer Care Register
- Calls from customers on the register are given priority
- Dedicated team keep customers on the register updated for the duration of the power cut
- Co-operation and promotion agreement in place with NI Water
- Very important service with positive feedback



THE FUTURE OF ENERGY: THE ENERGY MARKET IS CHANGING

UK introduced a **'net-zero by 2050'** target.



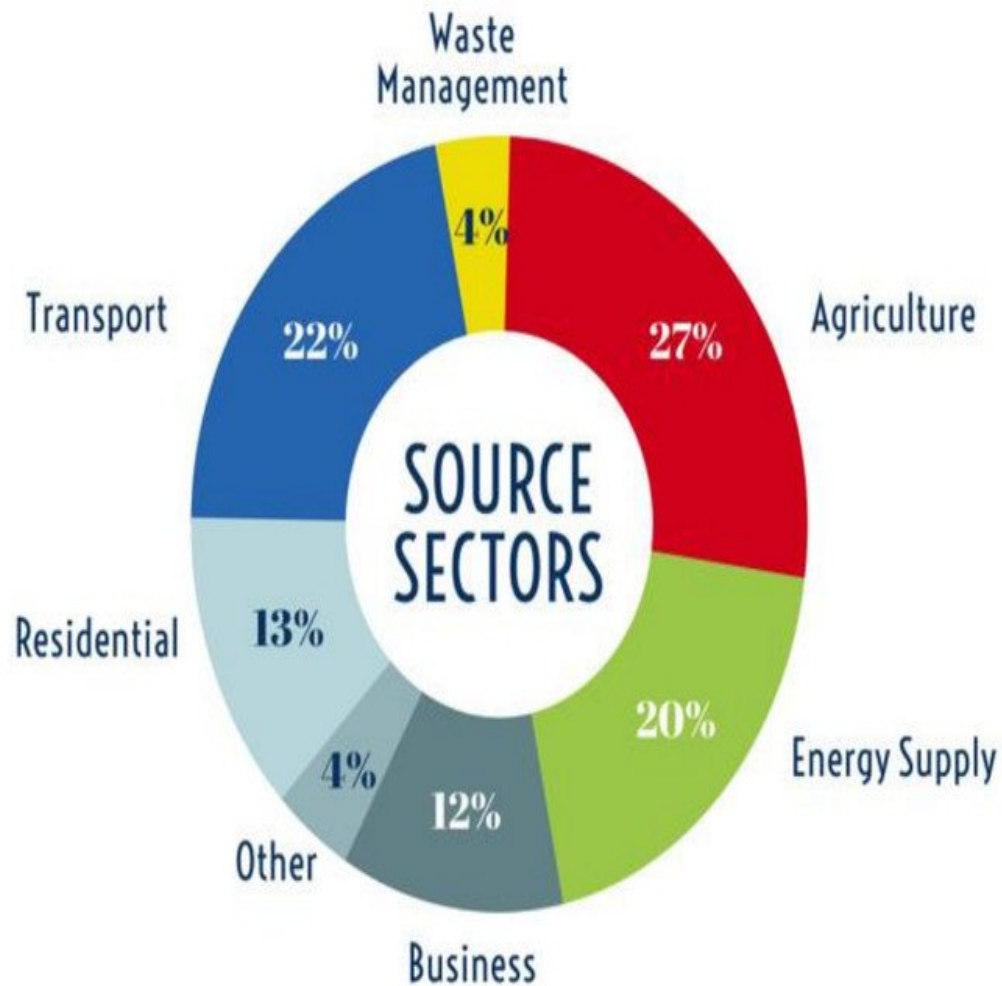
has initiated a process to respond to that.

As custodians of the network, NIE Networks has a key role to shape and deliver that.



Climate change

THE FUTURE OF ENERGY: ELECTRICIFICATION IS VITAL TO DECARBONISE SOCIETY



20.6 Mt CO₂e
Northern Ireland
(2016 CO₂e emissions)

Electricity, Transport and Heat Sectors
account for approx. 60% of our CO₂e
emissions.

Decarbonising Electricity and
electrification of Transport & Heat - the key
means to deliver significant carbon
reduction.

THE FUTURE OF ENERGY: NIE NETWORKS' ROLE

“Our role is to provide an electricity network that enables the energy transition that customers can harness clean energy in many aspects of their lives.”



EFFICIENT
RENEWABLE
GENERATION



GENERATE,
CONSUME, STORE
OR SELL



REDUCE
EMISSIONS



IMPACT
CLIMATE
CHANGE

WHAT IS DRIVING OUR APPROACH?



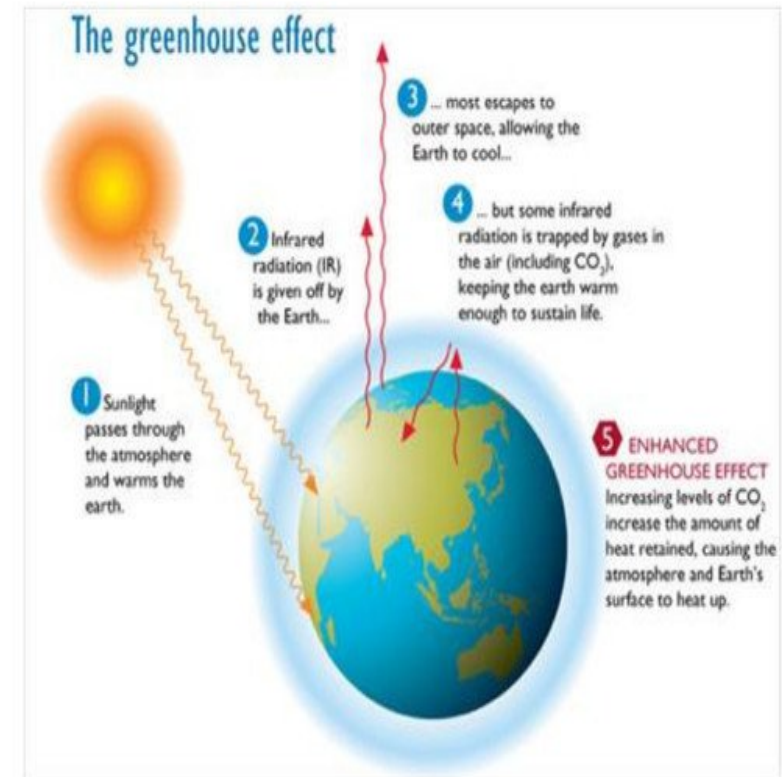
CHANGING
CUSTOMER
PREFERENCES



RAPID
ADVANCES IN
TECHNOLOGY



CONSEQUENCE OF
CLIMATE CHANGE &
LEGISLATIVE DRIVERS



WHAT IS OUR ASK OF COUNCILS?

NIE Networks has a pivotal role in creating a future where renewable generation displaces the carbon in electricity and where electrification displaces the carbon in transport and heat.

However, we need to include our customers and stakeholders as we develop our plans. We need to know the following:



**YOUR VISION,
PLANS &
PRIORITIES**



**YOUR
DECARBONISATION
POLICY**



**POTENTIAL
COMMUNITY
CONCERNS**



**EXPERTS
WITHIN YOUR
TEAM**



**HOW YOU'D
LIKE TO BE
INVOLVED**

HOW CAN NIE NETWORKS HELP COUNCILS?



HOW CAN WE HELP WITH YOUR PLANS?



Are there any issues that we can help to resolve?

Are there any opportunities for us to work together to help drive benefits to the NI citizen?

FURTHER INFORMATION

A decorative graphic at the bottom of the slide consisting of a thick, wavy blue line that starts dark blue on the left and transitions to a lighter blue on the right.

NIE Networks' Structure

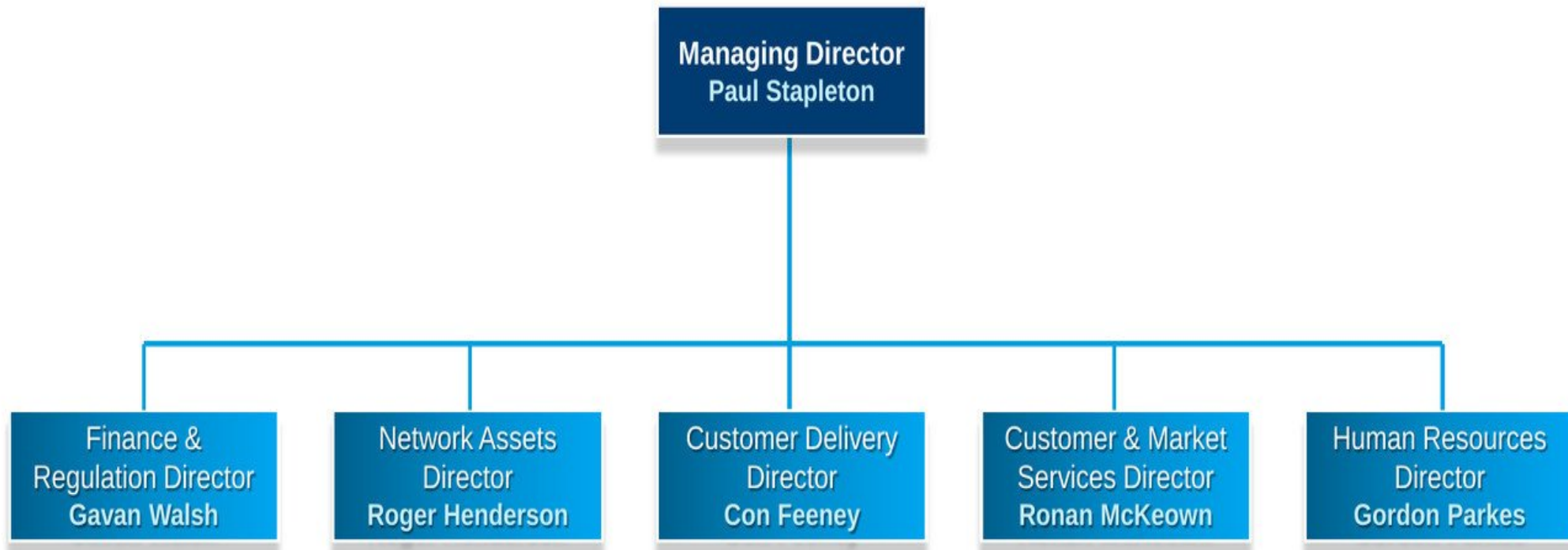


16



- NIE privatised in 1992 and regulated by Northern Ireland Authority for Utility Regulation (“UR”) since 1st April 1992
- ESB acquired NIE in 2010 and changed the name to Northern Ireland Electricity Networks Limited in 2015
- NIE Networks’ regulatory licence requires it to maintain full managerial and operational independence from ESB
- Board of Directors includes three independent members and two senior executives
- Committed to achieving the highest standards of corporate governance, corporate responsibility and risk management

NIE Networks: Executive Team Structure

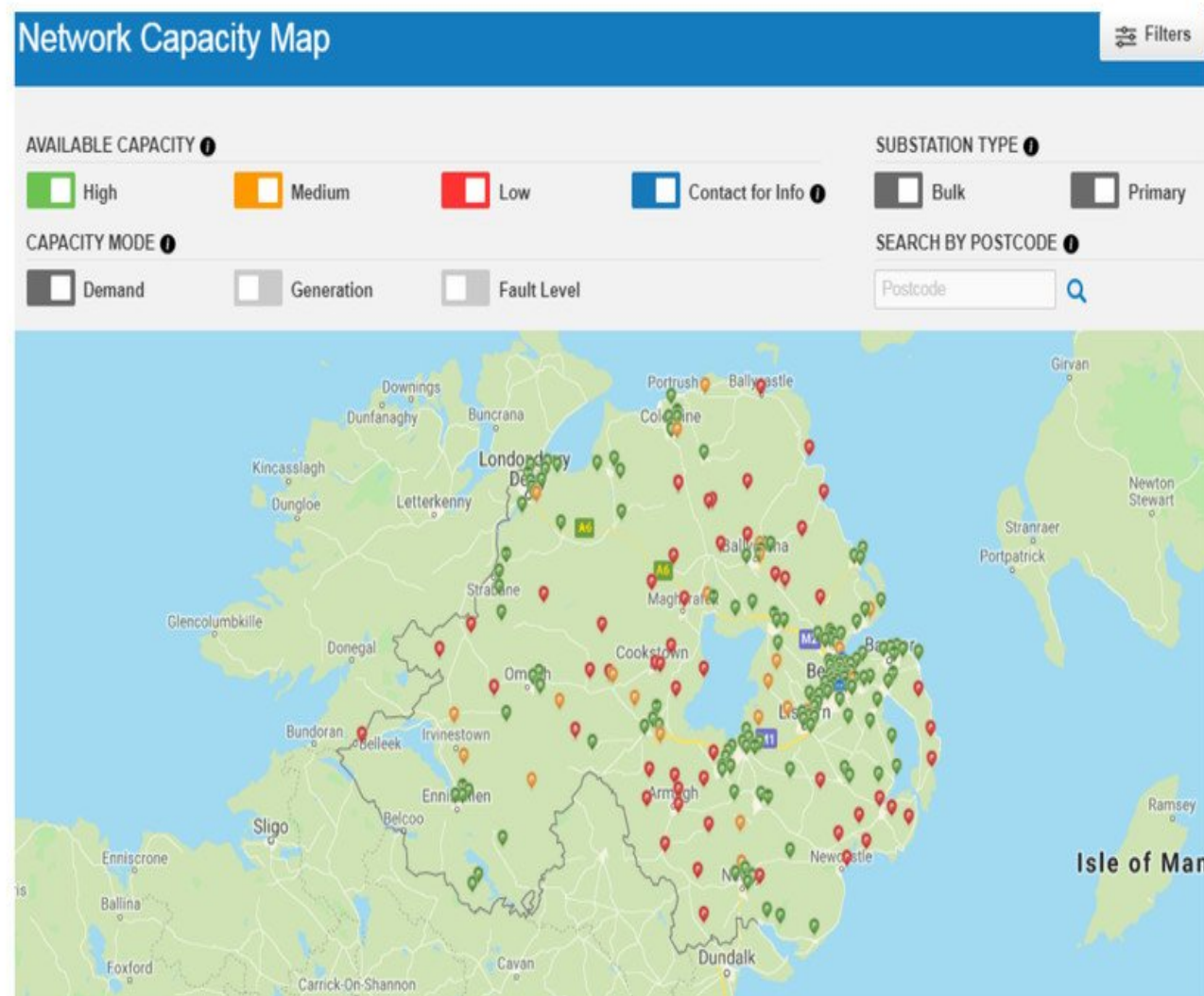


NIE Networks' Overview

Customers	c880,000
Transmission Network	c2,200 km
Distribution Network	c47,000 km
Substations	c300 major
Employees	c1,200
Price Control Total Expenditure (RP6: October 2017– March 2024)	c£1.2bn



Supporting Your Decision Making – Network Capacity Map



- We've developed a 'live' map showing capacity on the network and where there are constraints
- This will aid your strategic planning process
- Available Q4 2019
- It will highlight constraints on the Distribution Network
- Will also include information on proposed mitigation measures

Winter Preparations

As part of our annual 'Preparing for Winter' campaign, we have issued our hotline number to all elected representatives, recognising the important role they play in passing information to the public and supporting relief efforts.

The hotline number (0808 100 2969) is a priority line for elected representatives only.

Our Customer Helpline number for the general public
is 03457 643 643.



EXAMPLE OF ISSUE WITH DEVELOPMENT IN PROXIMITY TO THE NETWORK

CHALLENGE



BIRD FOULING - SIGNIFICANT COMPLAINTS RECEIVED

OUR ASK



RAISE CUSTOMER AWARENESS AT PRE-PLANNING STAGE



Contact Information

Edel Creery

Head of Communications & Stakeholder Engagement

E: edel.creery@nienetworks.co.uk

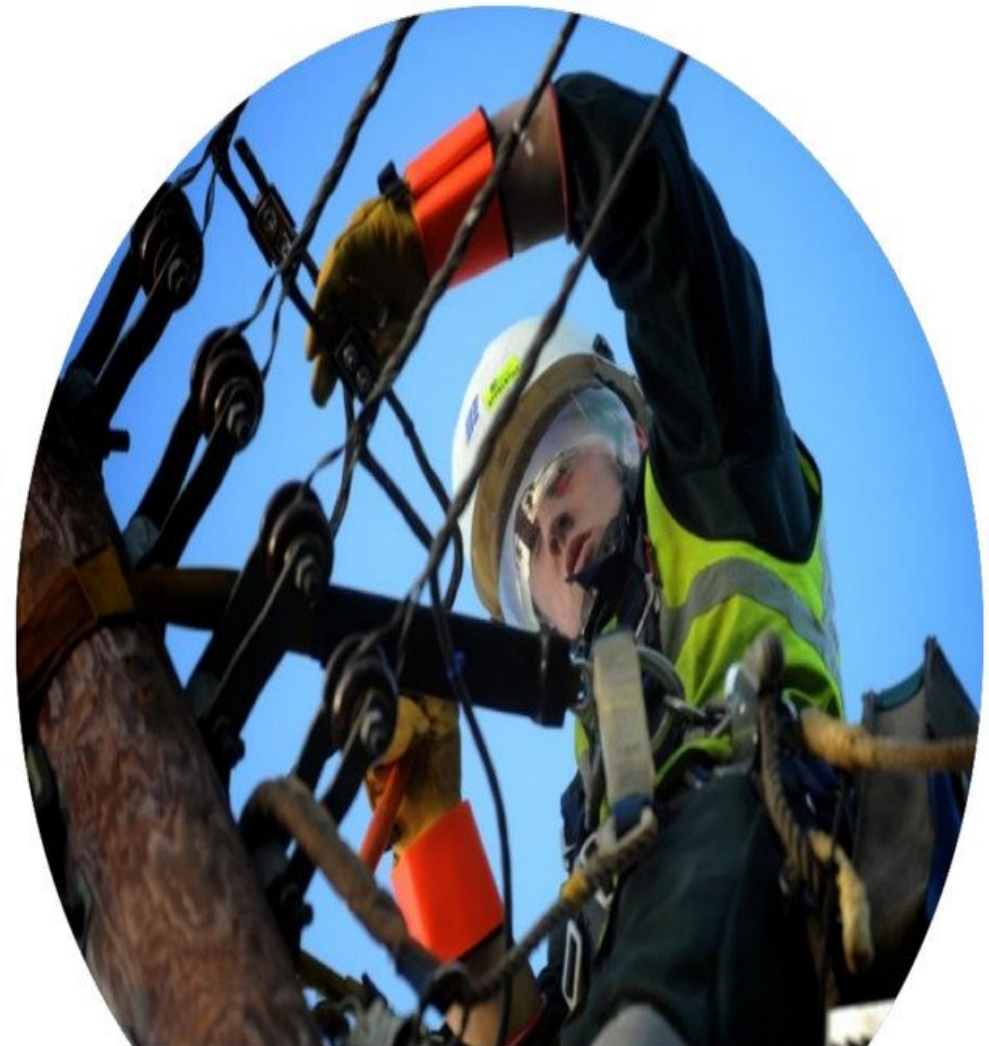
T: +44 (0) 7899 943796

When producing Local Development Plans, request that NIE Networks is included as a non-statutory consultee.

E: planningconsultations@nienetworks.co.uk

Signpost developers to NIE Networks when specific planning applications may impact on electricity infrastructure.

E: ronan.mcKeown@nienetworks.co.uk





Risk to Vital Infrastructure for Newry Mourne and Down District Council

27 January 2020

Ronan Larkin, Director of Finance and Regulation, NI Water

Grahame Millar, Head of Wastewater Infrastructure Delivery, NI Water

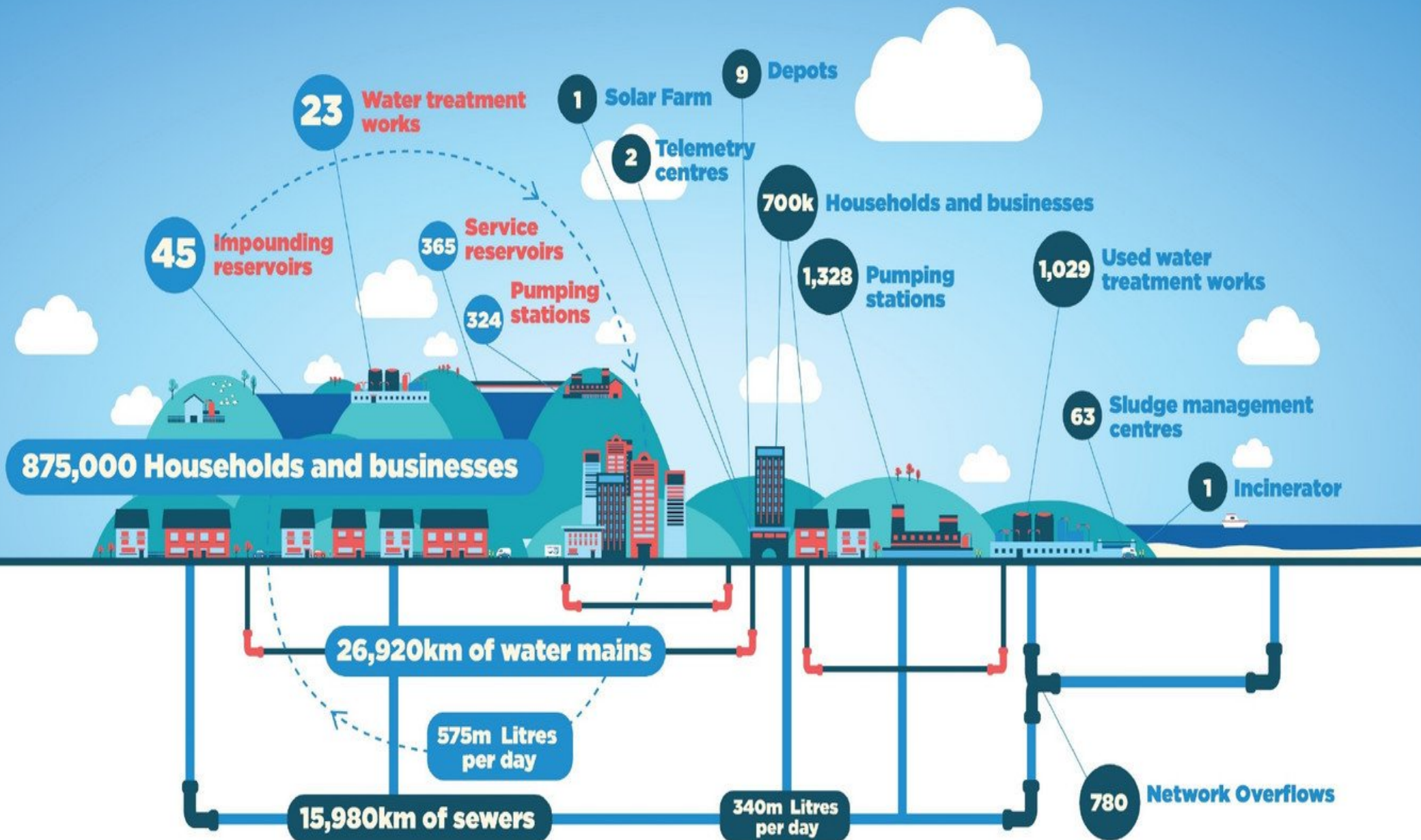
ELECTED REPRESENTATIVE HOTLINE: 0345 300 6461



Our Presentation Will Cover:

- NI Water and Northern Ireland's ambitions
- Strategic issues for water and wastewater infrastructure across Northern Ireland and Newry Mourne and Down District Council
- The critical nature of funding and your support

NI Water: Vital Infrastructure Scope



Population Growth



Business and Industry



Tourism Growth



Northern Ireland's Ambitions

29

DRAFT PROGRAMME FOR GOVERNMENT FRAMEWORK 2016-21

Programme for Government Outcomes Framework

Our Purpose

Improving wellbeing for all – by tackling disadvantage, and driving economic growth

Outcomes



Respond to the consultation: www.northernireland.gov.uk



ECONOMY
2030

A consultation on an
Industrial Strategy
for Northern Ireland

THE NORTHERN IRELAND ECONOMY: 2017-2030 MILESTONES

By 2021, we will have



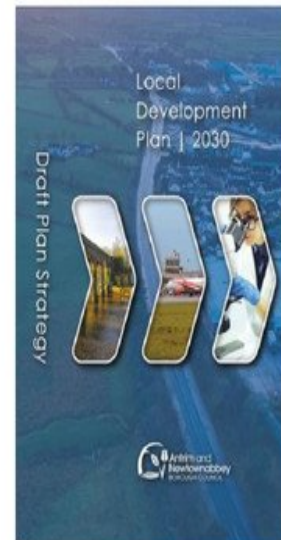
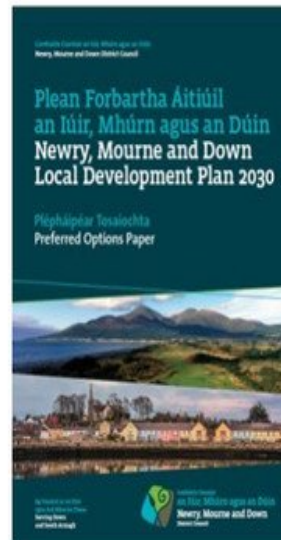
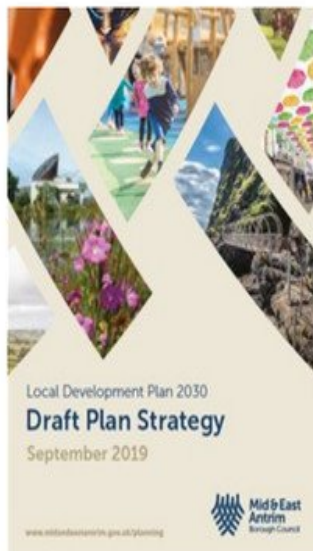
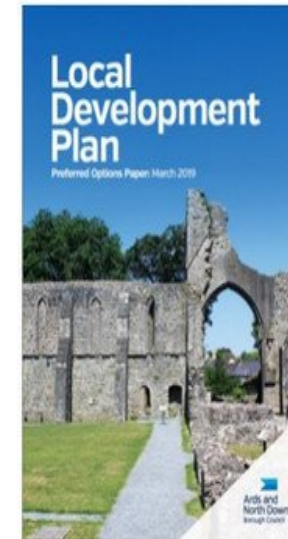
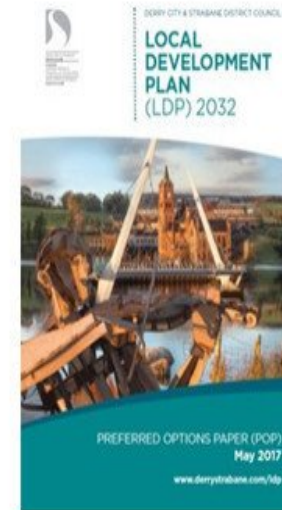
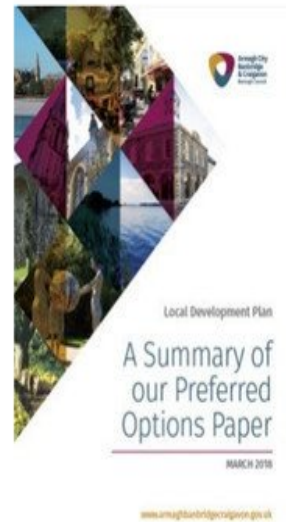
By 2025, we will have



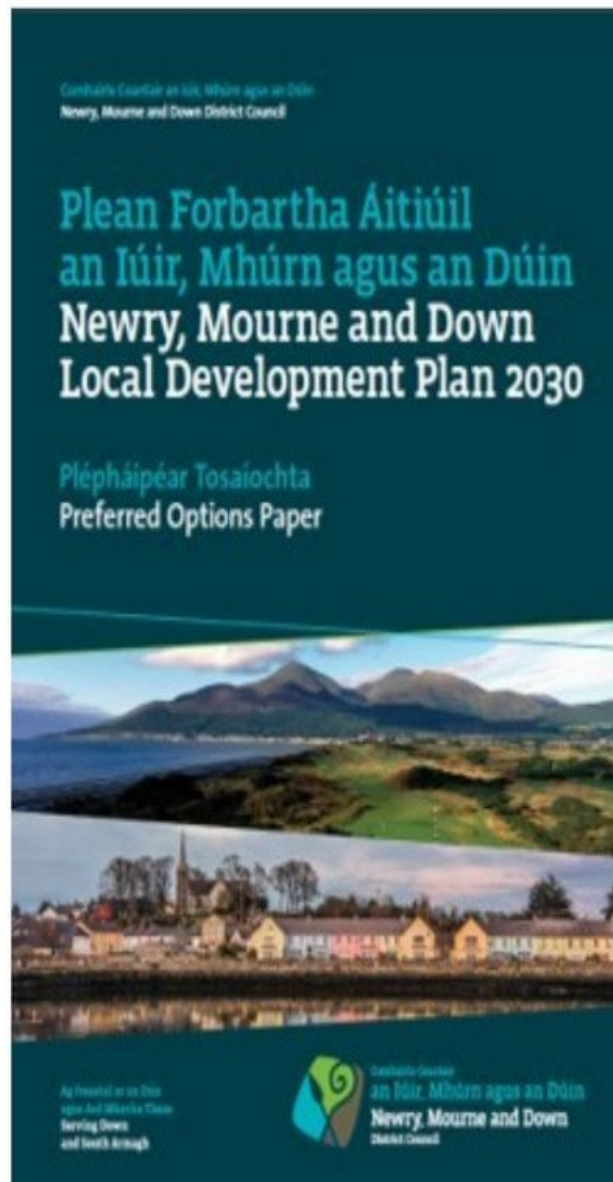
By 2030, we will have



Council Ambitions



Newry Mourne and Down District Council Ambition 31



By 2030

- 15,000+ new homes
- 9,000+ new jobs

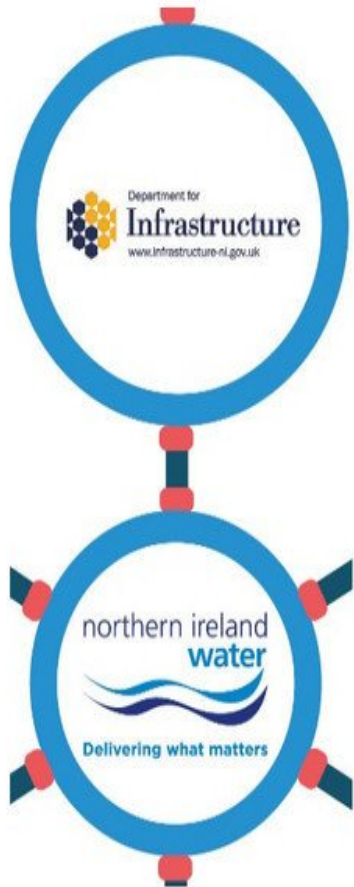
City and Main Town – Newry, Downpatrick

Local and Small Towns – Newcastle, Warrenpoint, Kilkeel, Ballynahinch, Saintfield, Killyleagh, Castlewellan, Bessbrook, Crossmaglen

Vision - Newry, Mourne and Down is a place with strong, safe and vibrant communities where everyone has a good quality of life and access to opportunities, choices and high quality services which are sustainable, accessible and meet people's needs.

NI Water's Funding

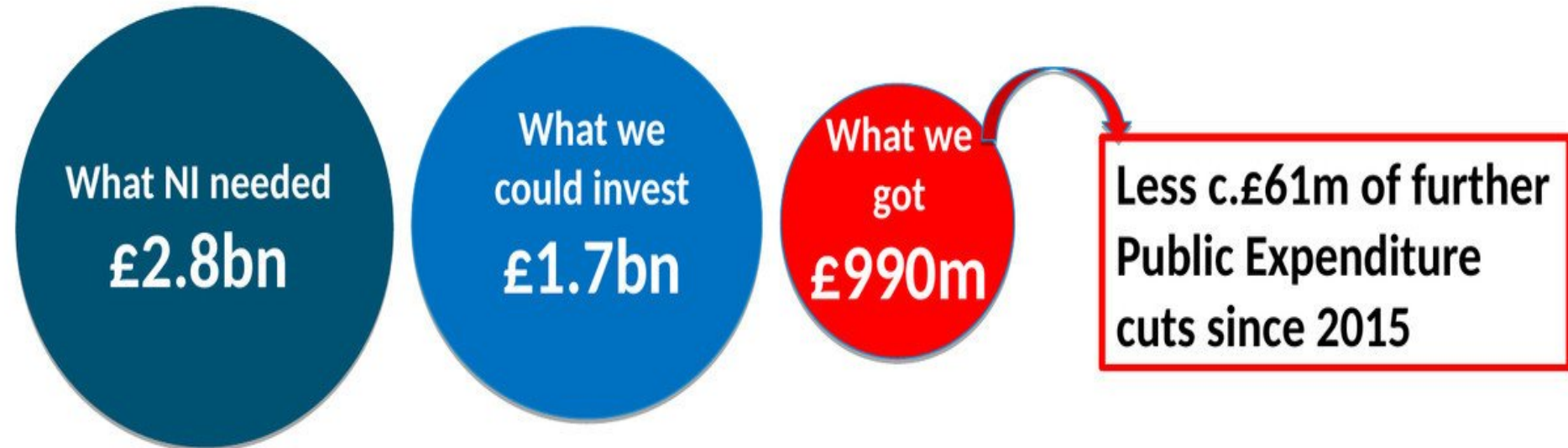
32



NI Water can only spend within its Annual Public Expenditure budget

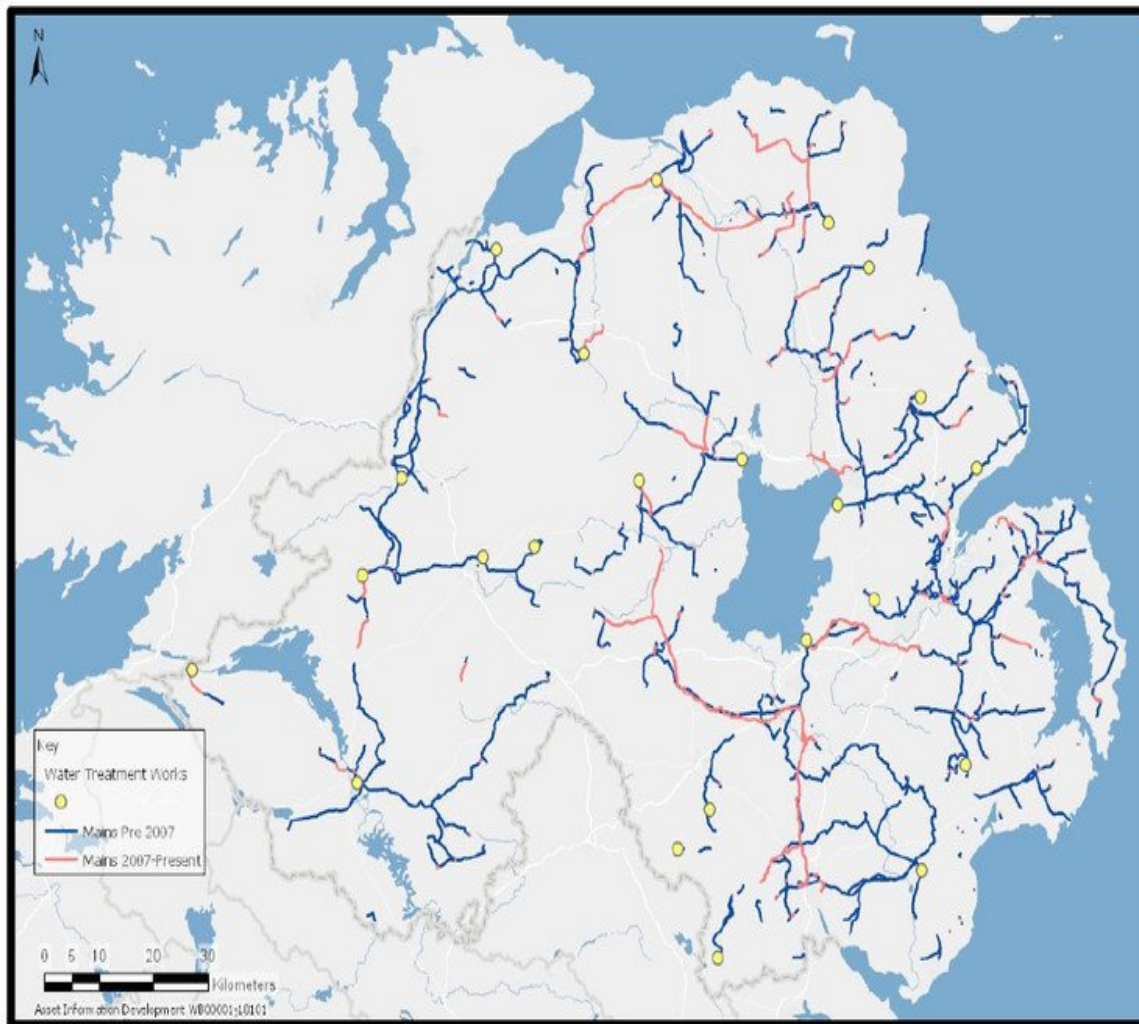
NI Water's Funding Challenge (in 2013)

PC15 Capital Business Plan (2015 to 2021)



Safe, Clean Water Supplies

34



Protecting safe, clean, drinking water supplied to houses and business is always the top priority

Development Constraints Identified (in 2013)

35

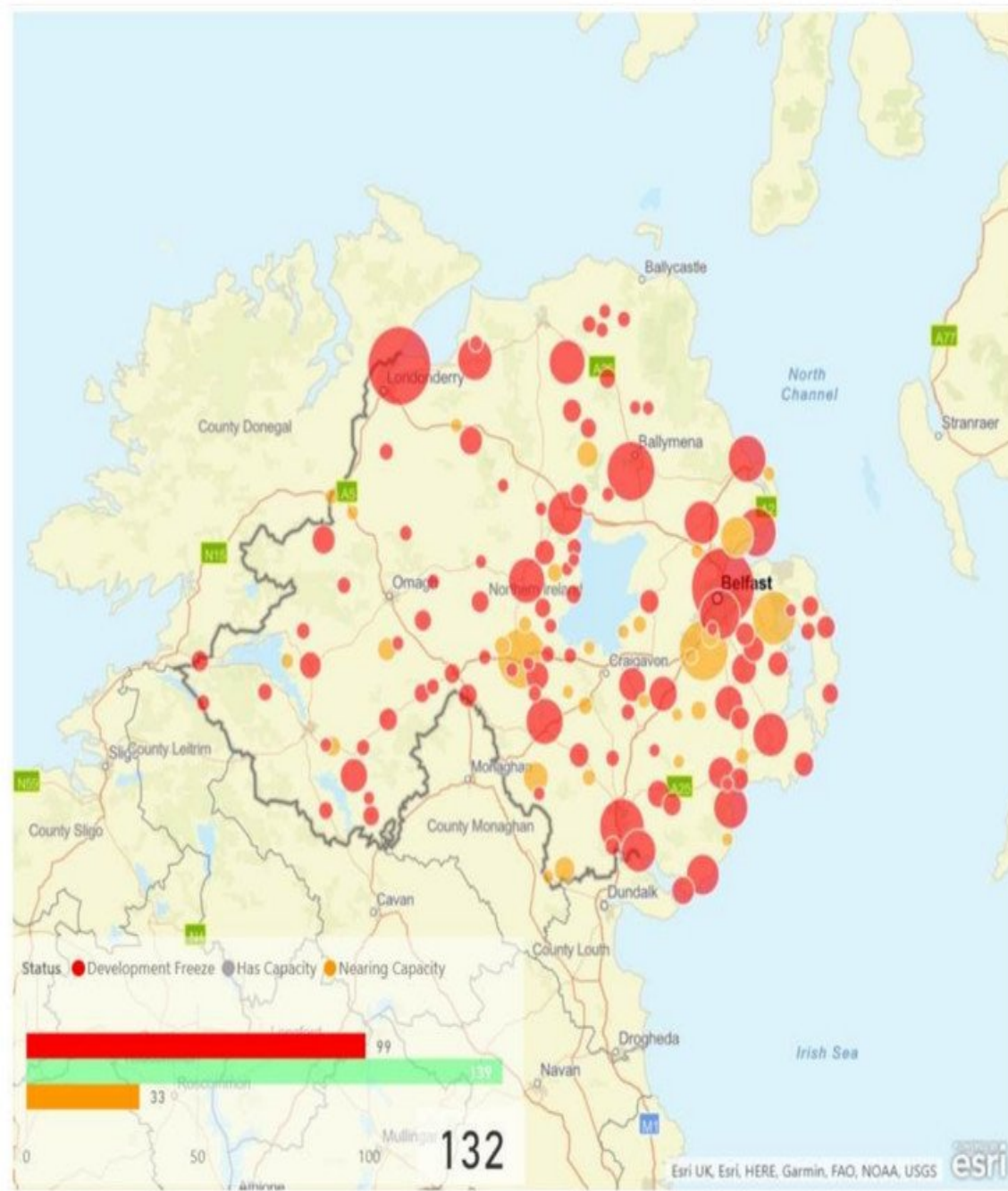
Our PC15 Business Plan states

“... it has been necessary to defer upgrades to 81 large WwTW. This will increase the number of sewerage systems which will reach their capacity during the PC15 period.

As a result NI Water will not be able to permit new connections, which may result in development at locations across N Ireland being constrained.”

Wastewater Capacity Constraints

36



PC21 Business Planning Analysis:

271 larger WWTW and their catchment areas serve c.90% of NI's population

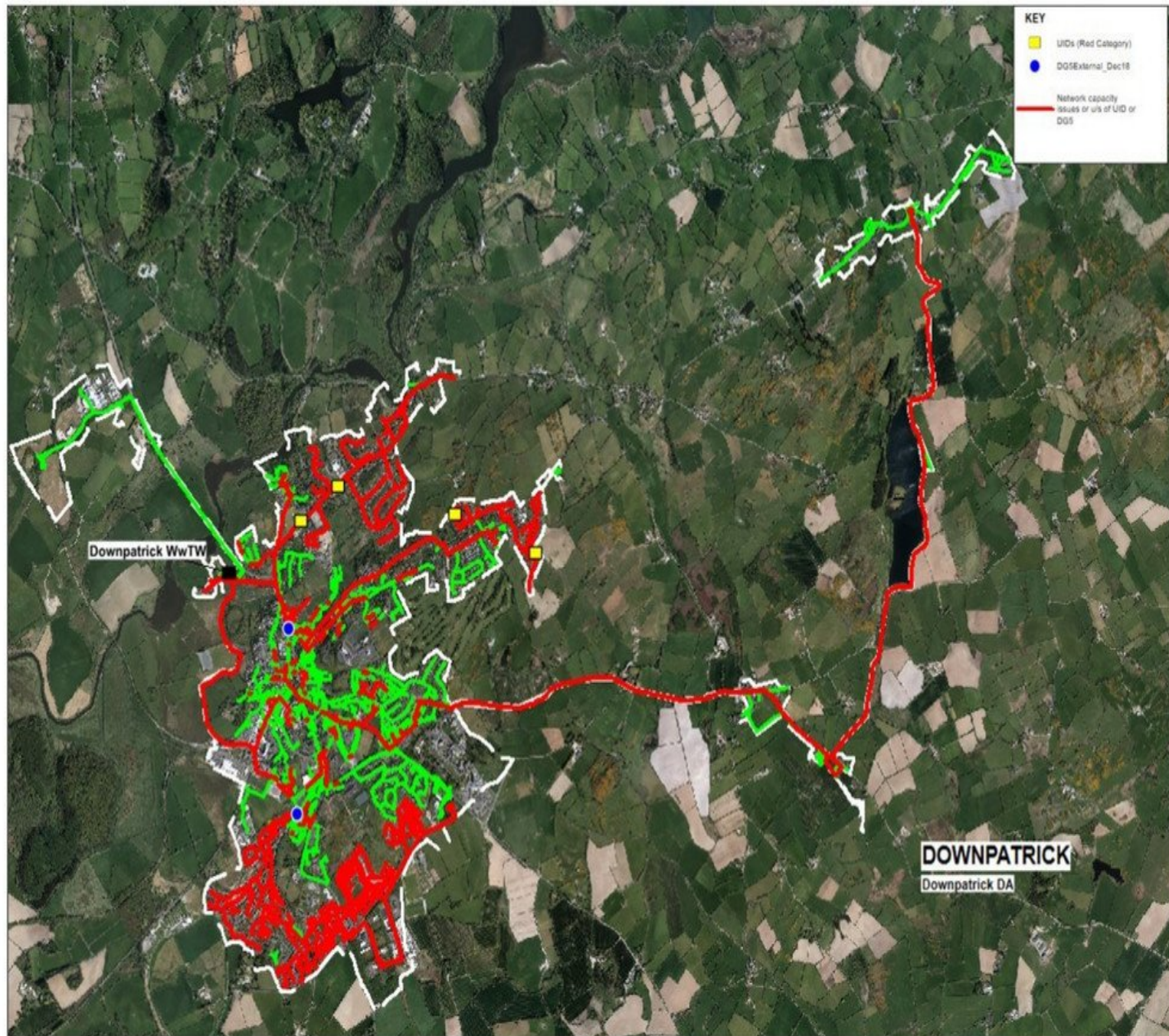
99 are now either at full capacity or fast approaching full capacity or have environmental / operational issues

A further 33 will reach full capacity by 2027

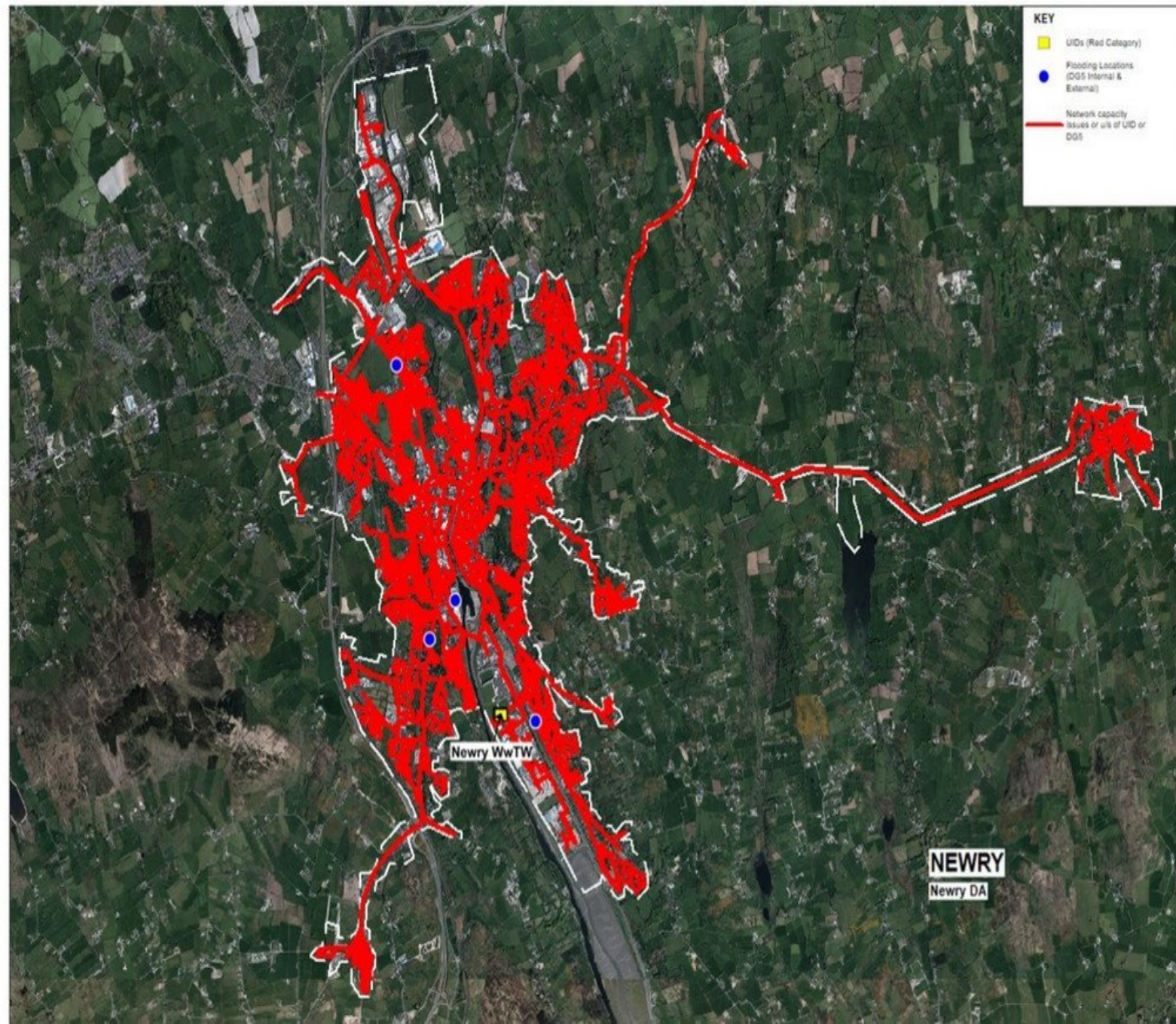
Economic growth, our natural environment and the population's health are at risk

Downpatrick Network Capacity Constraints: High Level Analyses

37

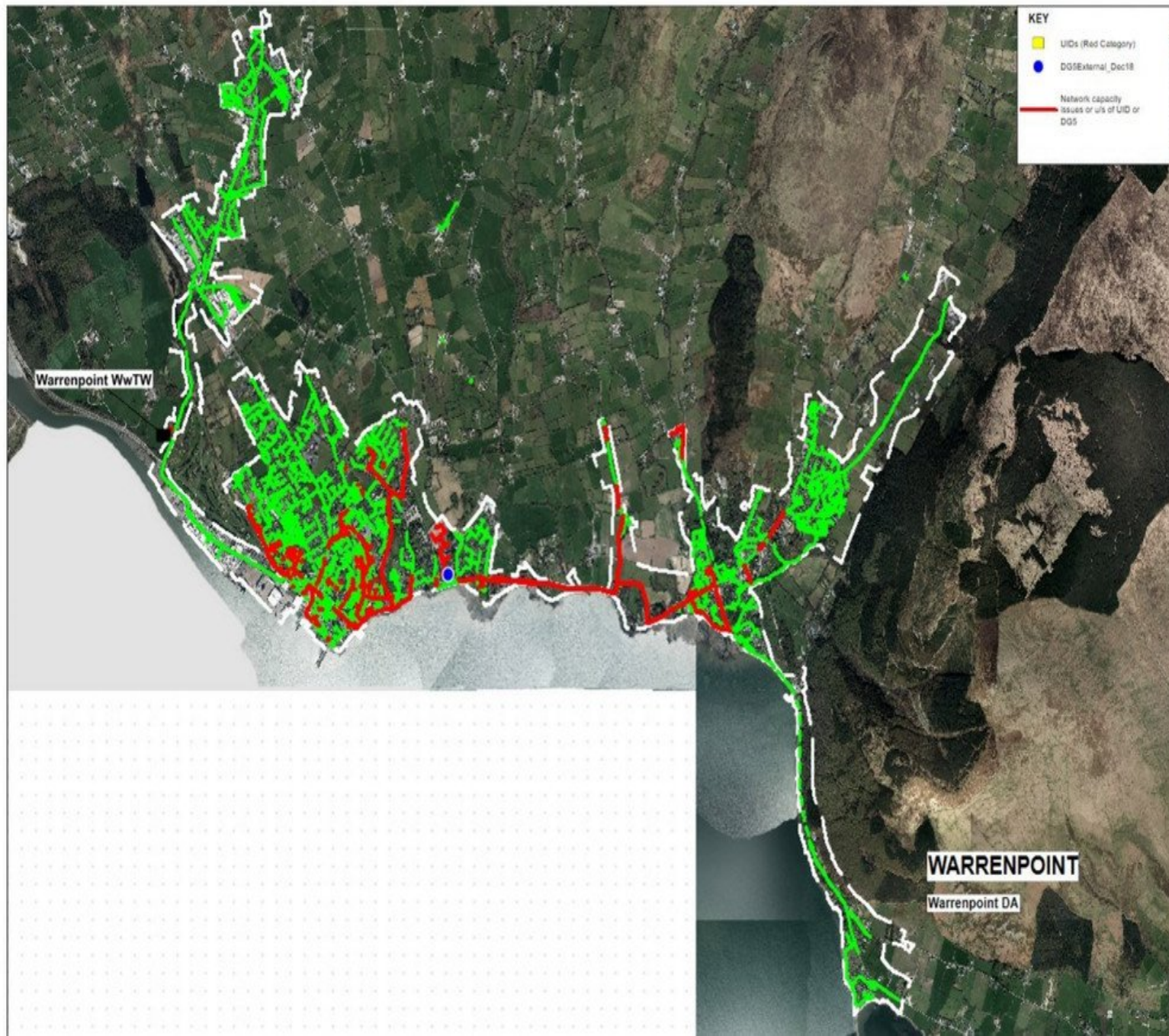


Newry Network Capacity Constraints: High Level Analyses



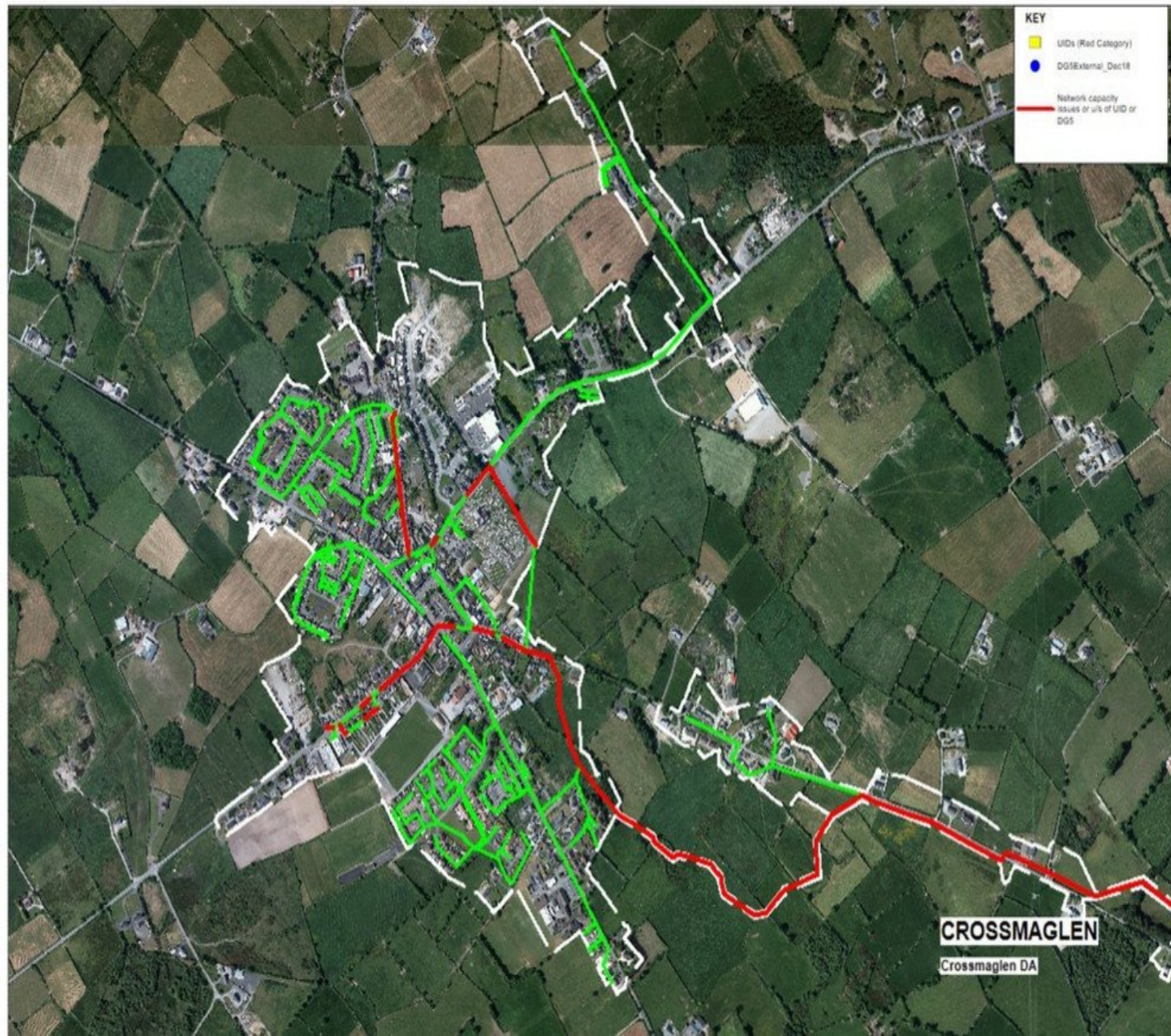
Warrenpoint Network Capacity Constraints: High Level Analyses

39

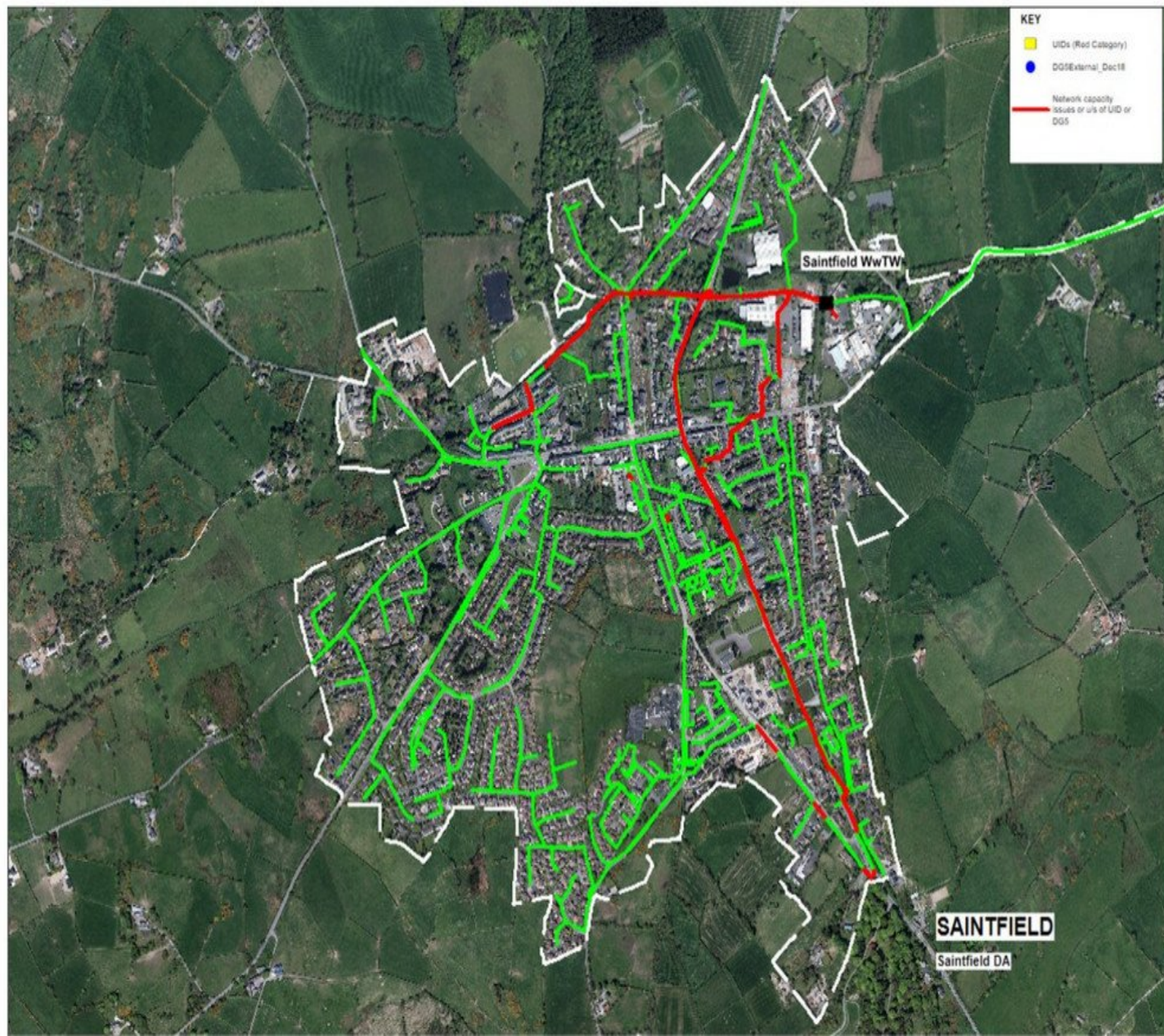


Crossmaglen Network Capacity Constraints: High Level Analyses

40

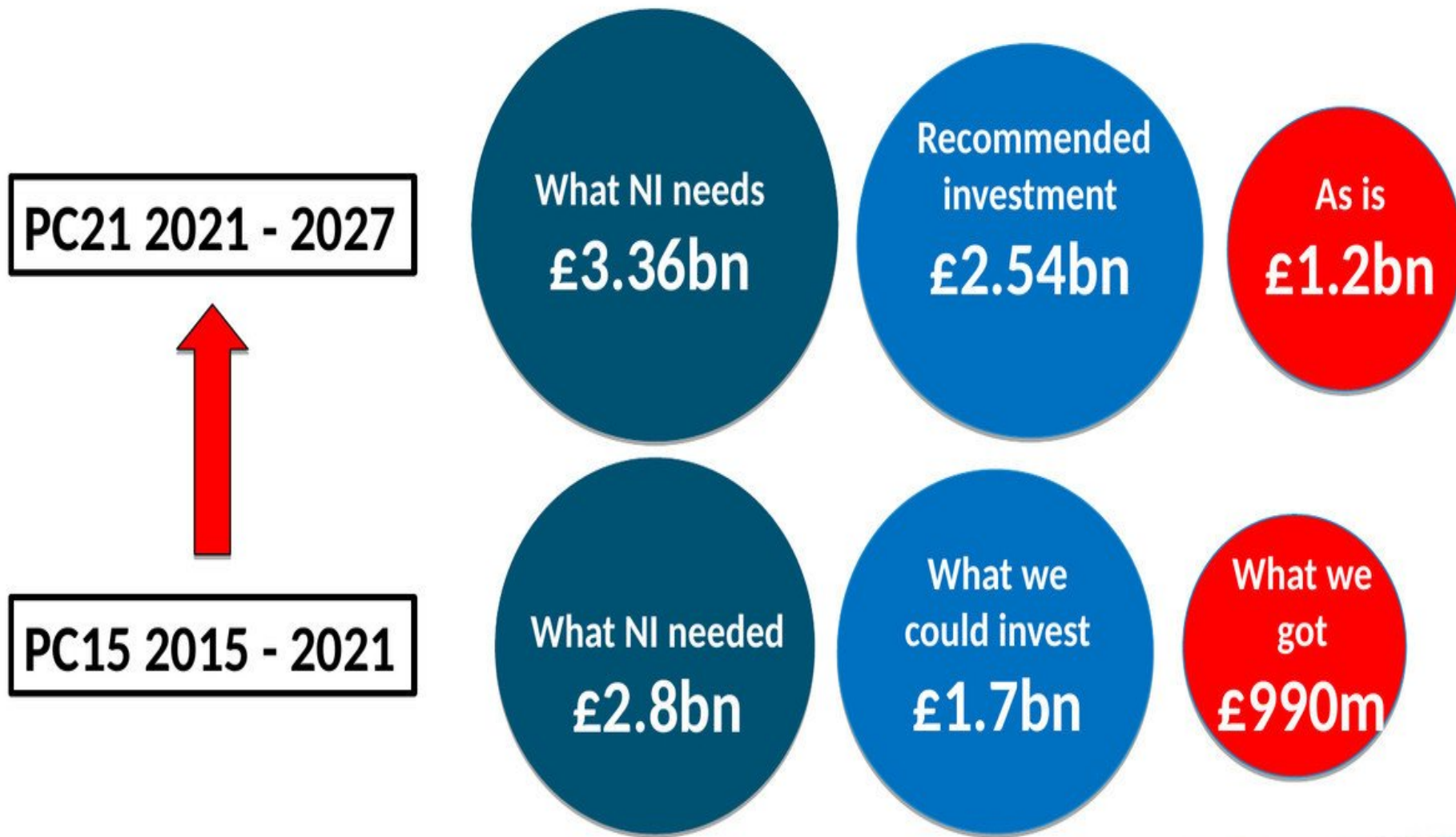


41

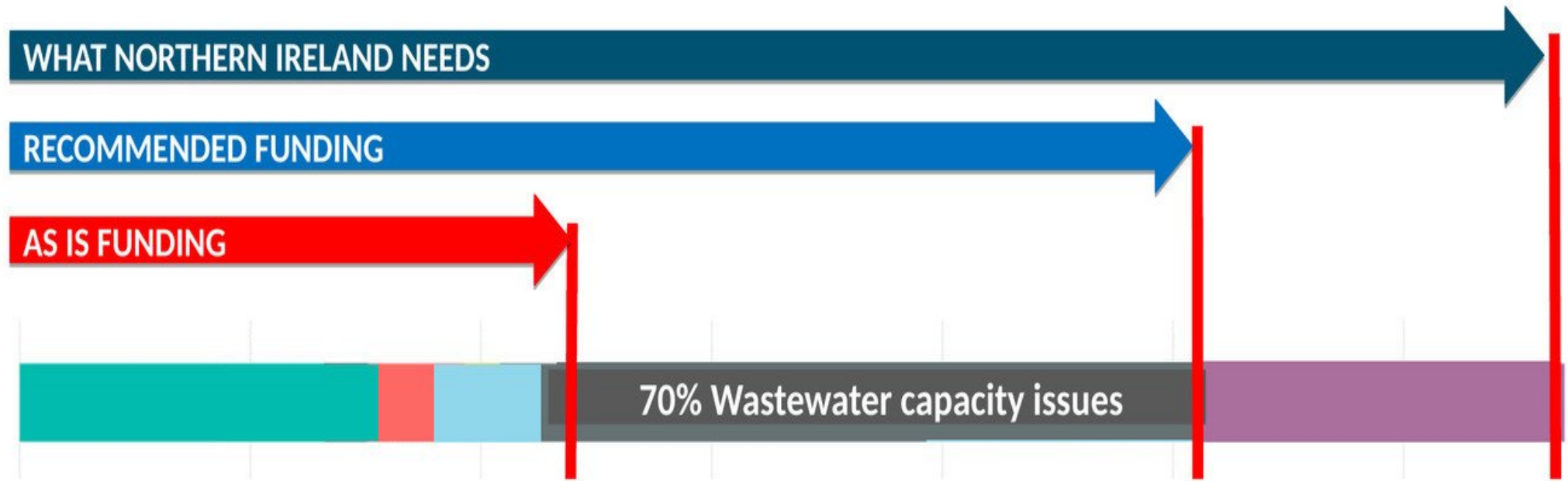


Funding is Not Keeping Pace with NI's Needs

42



Priority of Investment



- Maintenance/Rehab
- Facilities, Fleet & ICT
- Essential Water
- Essential Wastewater
- Other Requirements

Supporting Future Economy and Environment

44

- Significant investment is needed for wastewater and water infrastructure
- NI Water's current governance model is broken, to date it hasn't delivered the investment that Northern Ireland needs
- NI Water knows Northern Ireland's growth ambitions, we know what needs done and we have the plan and the skills to deliver it
- If funding continues at current levels there will be significant constraints on economic growth, damage to the environment and risk to people's health

THANK YOU

