

NEWRY, MOURNE & DOWN DISTRICT COUNCIL

NMD/SC/

Minutes of Special Council Meeting held on Monday 26 February 2018 at 6pm in the Mourne Room, Downshire Civic Centre, Downpatrick

In the Chair: Councillor R Mulgrew

In attendance:

(Councillors)

Councillor T Andrews	Councillor R Burgess
Councillor S Burns	Councillor P Byrne
Councillor M Carr	Councillor C Casey
Councillor D Curran	Councillor L Devlin
Councillor C Enright	Councillor H Harvey
Councillor G Hanna	Councillor T Hearty
Councillor M Larkin	Councillor K Loughran
Councillor J Macauley	Councillor D McAteer
Councillor O McMahan	Councillor A McMurray
Councillor M Murnin	Councillor H Reilly
Councillor J Rice	Councillor M Ruane
Councillor M Savage	Councillor G Sharvin
Councillor G Stokes	Councillor D Taylor
Councillor B Walker	

(Officials)

Mr L Hannaway, Chief Executive
Mr J McBride, Assistant Director, Community Planning
and Performance
Mr A Beggs, Head of Evidence and Research
Mrs C McAteer, Democratic Services Officer

Also in attendance: Dr. Tracy Power)
Dr. Jos Ijpelaar) NISRA

SC/007/2018 APOLOGIES AND CHAIRPERSON'S REMARKS

Apologies were received from Councillors Bailie, Brown, Craig, Harte, Quinn, Tinnelly and Trainor.

SC/008/2018 DECLARATIONS OF INTEREST

There were no declarations of interest.

SC/009/2018 BEST WISHES

The Chairperson said this would be the last meeting attended by Councillor Stephen Burns who was resigning as a Councillor. She thanked Stephen for all his hard work and wished him all the best in the future.

Councillors Reilly, Devlin, McMurray, Harvey and Macauley also thanked Councillor Burns and extended best wishes to him and his family for the future.

Councillor Burns thanked the Chief Executive and staff for their dedication and assistance to him during his time as a Councillor. He also paid tribute to his fellow Councillors and particularly those from his own party for their help and support.

SC/009/2018 PRESENTATION BY NISRA

The Chairperson welcomed Dr. Tracy Power and Dr. Jos IJpelaar to the meeting and invited them to make their presentation. **(Presentation attached).**

Dr. Power and Dr. IJpelaar thanked the Chairperson for the invitation to attend the meeting and highlighted the following in relation to Northern Ireland Multiple Deprivation Measures 2017:

- Main improvements
- How the measures could be used
- The 100 most deprived areas in Northern Ireland
- Information on the other domains (income domain and access to services domain had been greatly improved)
- Other products, online resources/user engagement.

Members raised the following issues:

- This information was very useful for funding applications as there was a direct reference to statistics – only drawback was that the statistics were done at a higher level and could therefore mask issues at lower village levels. **(NISRA – intend to produce some data for small areas – NISRA will continue to work to produce data for smaller areas whilst protecting confidentiality – hopefully by March this year).**
- An entire DEA represented by a Councillor scored very highly on all the domains including income and access to services – there needed to be more help and support for these Wards to improve them. **(NISRA - agree with these comments – the issue of availability and speed of broadband was an interesting one also).**
- How was the domain table decided on? **(NISRA – some of the domains were revised from the first time e.g. proximity to services was changed to access to services due to the inclusion of broadband).**
- Now 18 years into the process – generally those areas which were in the 100 most deprived areas category were still there despite funding being targeted towards these wards. Does the money being pumped into these areas ever get them out of deprived status? **(NISRA – over the years funding has been directed to the top multiple deprivation areas. Funding for all types of policy was not sensitive enough and policy makers should look at other domains in order to impact on policy related funding to each of the areas – do not take a blanket approach. NISRA's hope is that the statistics be used more intelligently to target specific areas).**

- What particular elements were considered for the measures for children. Target smaller areas. **(NISRA – income domain affects children up to the age of 15 – beyond this issues such as health and education also affects children. Some domains such as crime cannot be factored in as the age of the victim is not known.**
- Do the new boundary changes skew the figures in any way? **(NISRA – will be able to show the deprivation that is there in the new Wards).**
- Frustration expressed that the statistics show almost no change in the 100 most deprived areas over the past 10 years and the policy was simply not working. The decisions being made by Government and the Council were not rural proofed and policies should be based on the figures and statistics that NISRA have produced. **(NISRA – completely agree and that is why the statistics have been presented this way).**

There being no further business the meeting ended at 7.05 pm.

For confirmation at Meeting of Newry, Mourne and Down District Council to be held on Monday 9 April 2018.

Signed:


Chairperson

Chief Executive




Northern Ireland Multiple Deprivation Measures 2017 (NIMDM 2017)


Dr Tracy Power, Brian Green,
Dr Jos Ijpelaar and Claire McCann



Purpose of the presentation




- To introduce the latest set of Northern Ireland Deprivation Measures (NIMDM 2017)
 - Background
 - Framework
 - Governance
 - Public Consultations
 - Main Improvements
 - How the measures can be used
 - Headline Results
- To highlight online visualisation packages developed to make the results easily accessible




Background

- Spatial deprivation measures have been used in Northern Ireland since the 1970s
- 2001, 2005, 2010 & 2017 measures are all based on the 'Noble' methodology (as in rest of UK)




Multiple Deprivation Measure 2017



Framework for 2017 measures


- 2010 indicators should only be revised where:
 - there is a strong rationale to do so and appropriate data are available
- Proposed indicators in each domain must:
 - be **specific** to one of the seven individual domains of deprivation and represent a **major feature** of that form of deprivation
 - be **available for all of Northern Ireland** and collected in a consistent form
 - represent a **direct measure** or **good proxy** of that form of deprivation
 - be statistically **robust at the small area** level
 - Be as **up to date** as possible to provide information on current deprivation
 - be considered in the context of the 36 recommendations that arose from the 2010 work




Governance

- NISRA Project Team
 - Tracy Power – Director of Analysis
 - Brian Green – Head of Demographic Statistics
 - Jos Ijpelaar and Claire McCann - Demographic Statistics
- Supported by seven domain expert groups
 - including a group to consider any urban/ rural bias
 - role included: provision of professional advice on the indicators, securing access to data
- Authoritative Steering Group, responsible for all major decisions, comprising representatives from:

<ul style="list-style-type: none"> All NI Departments Belfast City Council Causeway Coast & Glens District Council Derry City & Strabane District Council Newry, Mourne & Down District Council Southern Health & Social Care Trust 	<ul style="list-style-type: none"> Ulster Farmers' Union Northern Ireland Rural Development Council Rural Community Network Equality Commission NI Housing Executive NICVA
---	--



Public Consultations



- Two public consultations
- First - Main geography for the outputs
 - Issued February 2016 - **paper**
 - Detailed report published
 - Steering Group decision
 - Continued use of SOAs as main geography
- Second - Proposals for the updated measures
 - Issued November 2016 - **paper plus 4 Information Events**
 - Detailed Blueprint document published
 - Steering Group decisions
 - 38 indicators to be used
 - No change to domain weights used in 2010 measures

Main Improvements

- **Income Deprivation Domain:** Using income data instead of benefit data
- **Employment Deprivation Domain:** Including people with no income from employment, nor benefits associated with employment deprivation
- **Health Deprivation & Disability Domain:** Including people on multiple and repeat prescriptions to reflect complex and prolonged health needs
- **Access to Services Domain:** Using data relating to travel times to a wider variety of services by both private and public transport, and access to broadband
- **Living Environment Domain:** New indicators on energy efficiency, road quality, flood risk, over crowding and suitability of housing for the disabled
- **Crime & Disorder Domain:** Including an additional indicator relating to theft

How the measures can be used

How the measures can be used

What the measures **can** be used for

For each of the individual domains of deprivation and the overall MDM, the rankings can be used to:

- Explore the **relative deprivation** of small geographical areas by comparing them with each other
- Explore which small geographical areas are the **most or least deprived**
- Examine the **spatial distribution** of small geographical areas that are the most or least deprived, however defined
- Explore which small geographical areas have **joined, left or remained** in the most or least deprived areas over time

This can be done for Northern Ireland as a whole, or for each individual Local Government District or for other geographies.

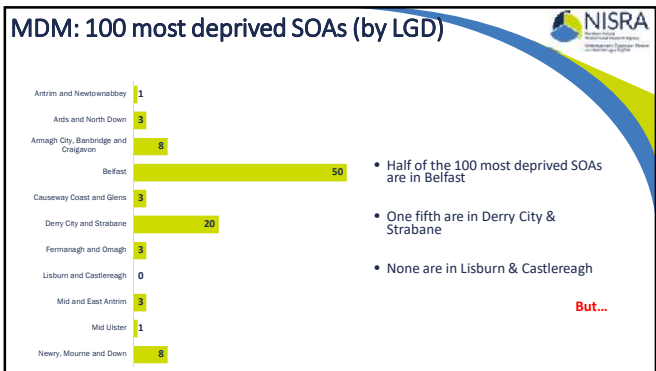
How the measures can be used

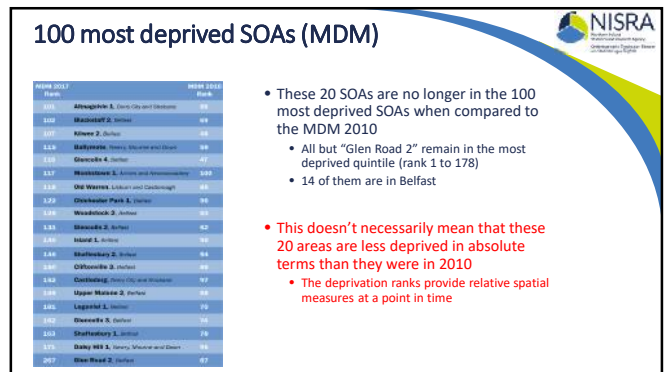
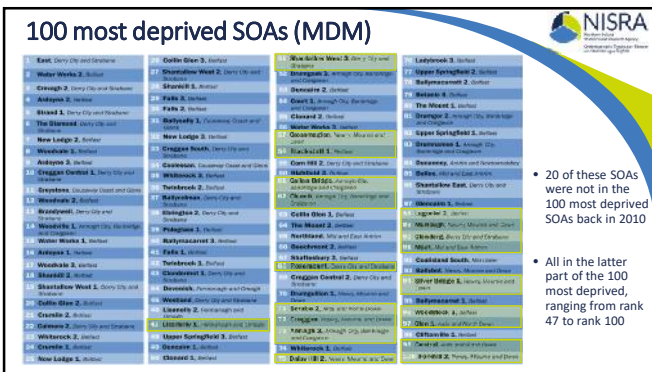
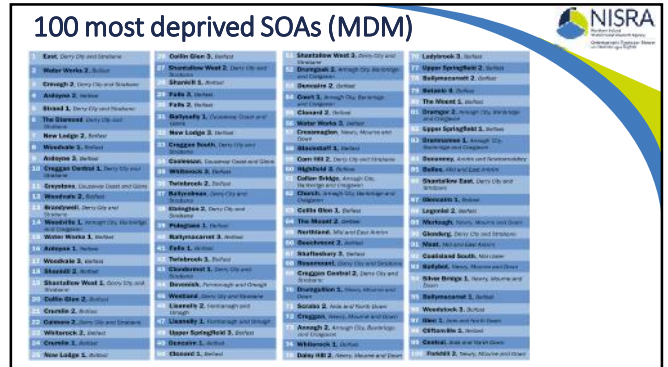
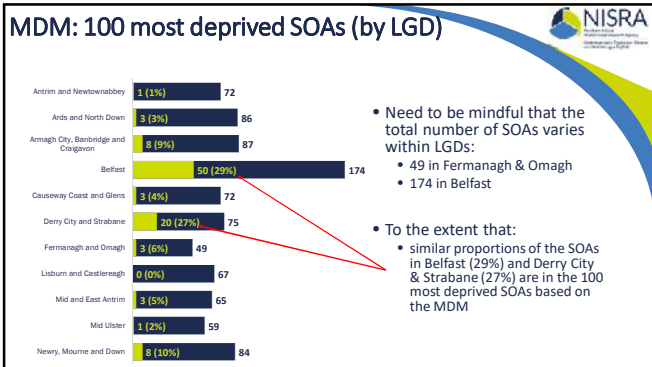
What the measures **cannot** be used for

- Identifying deprived individuals or groups of people – these are **area based** spatial measures
- Quantifying the **extent** to which a small geographical area is deprived – they provide relative rankings of areas
- Quantifying the extent to which one area is **more or less deprived** than another – they provide relative rankings of areas
- Assessing how **absolute deprivation** in a small geographical area has changed over time – they provide a spatial ranking at a single point in time
- **Measuring affluence** – lack of deprivation is not the same as being affluent
- Undertaking UK comparisons – each UK country has a different set of indicators, time periods, domains and domain weights

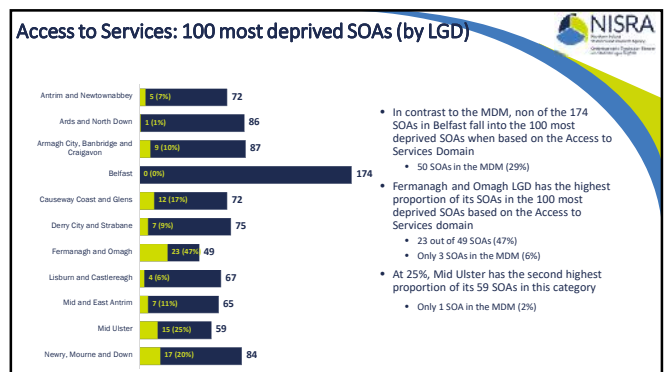
Where are the 100 most deprived areas in Northern Ireland?

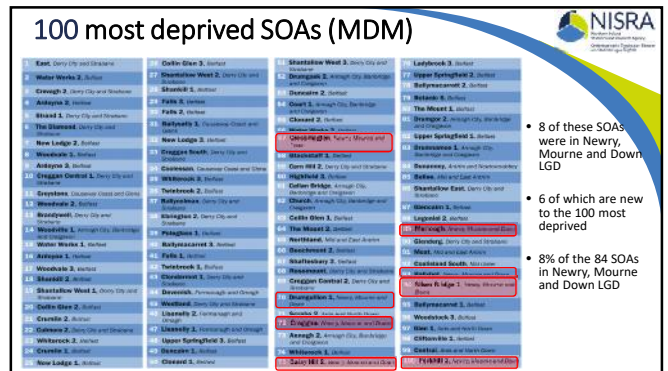
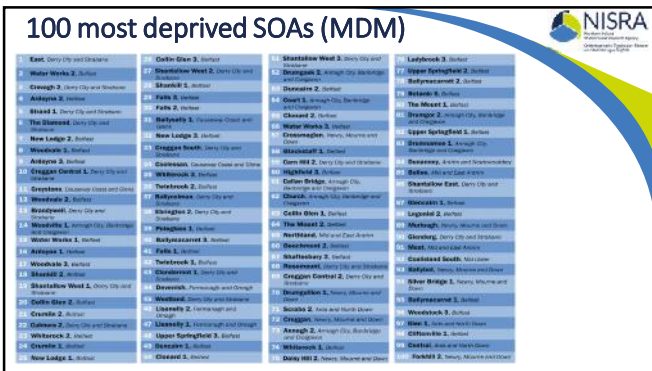
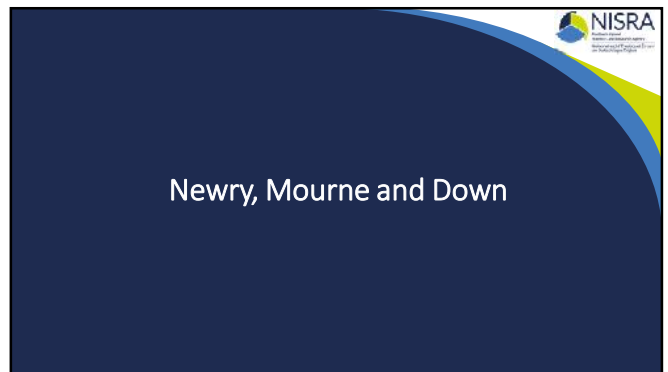
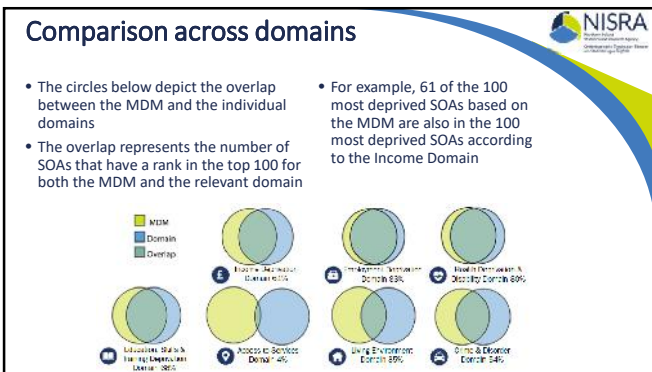
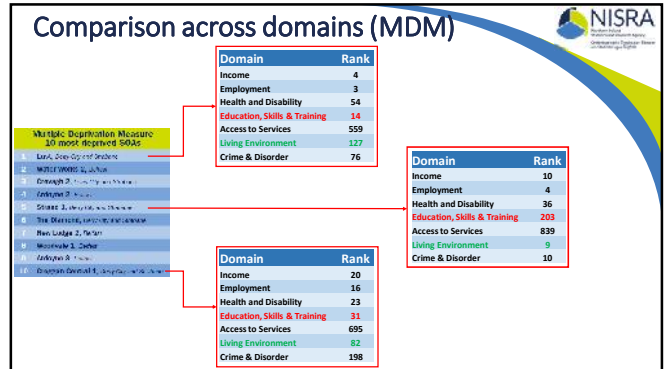
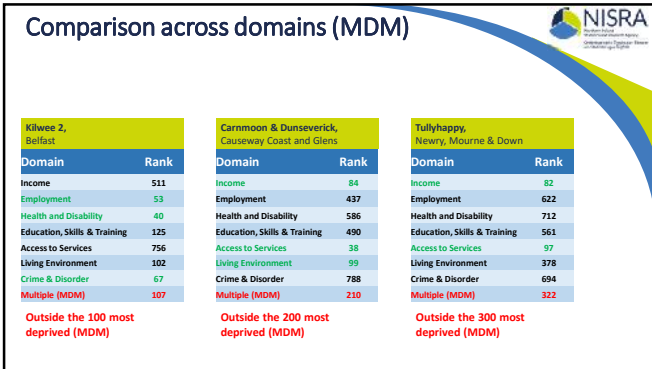
(Based on the MDM)





What about the other domains?





Income deprivation SOAs within NEWRY, MOURNE AND DOWN LGD

Rank	SOA	Rank	SOA	Rank	SOA	Rank	SOA
1	NEWRY 1	1	NEWRY 2	1	NEWRY 3	1	NEWRY 4
2	NEWRY 5	2	NEWRY 6	2	NEWRY 7	2	NEWRY 8
3	NEWRY 9	3	NEWRY 10	3	NEWRY 11	3	NEWRY 12
4	NEWRY 13	4	NEWRY 14	4	NEWRY 15	4	NEWRY 16
5	NEWRY 17	5	NEWRY 18	5	NEWRY 19	5	NEWRY 20
6	NEWRY 21	6	NEWRY 22	6	NEWRY 23	6	NEWRY 24
7	NEWRY 25	7	NEWRY 26	7	NEWRY 27	7	NEWRY 28
8	NEWRY 29	8	NEWRY 30	8	NEWRY 31	8	NEWRY 32
9	NEWRY 33	9	NEWRY 34	9	NEWRY 35	9	NEWRY 36
10	NEWRY 37	10	NEWRY 38	10	NEWRY 39	10	NEWRY 40
11	NEWRY 41	11	NEWRY 42	11	NEWRY 43	11	NEWRY 44
12	NEWRY 45	12	NEWRY 46	12	NEWRY 47	12	NEWRY 48
13	NEWRY 49	13	NEWRY 50	13	NEWRY 51	13	NEWRY 52
14	NEWRY 53	14	NEWRY 54	14	NEWRY 55	14	NEWRY 56
15	NEWRY 57	15	NEWRY 58	15	NEWRY 59	15	NEWRY 60
16	NEWRY 61	16	NEWRY 62	16	NEWRY 63	16	NEWRY 64
17	NEWRY 65	17	NEWRY 66	17	NEWRY 67	17	NEWRY 68
18	NEWRY 69	18	NEWRY 70	18	NEWRY 71	18	NEWRY 72
19	NEWRY 73	19	NEWRY 74	19	NEWRY 75	19	NEWRY 76
20	NEWRY 77	20	NEWRY 78	20	NEWRY 79	20	NEWRY 80
21	NEWRY 81	21	NEWRY 82	21	NEWRY 83	21	NEWRY 84
22	NEWRY 85	22	NEWRY 86	22	NEWRY 87	22	NEWRY 88
23	NEWRY 89	23	NEWRY 90	23	NEWRY 91	23	NEWRY 92
24	NEWRY 93	24	NEWRY 94	24	NEWRY 95	24	NEWRY 96
25	NEWRY 97	25	NEWRY 98	25	NEWRY 99	25	NEWRY 100

- As the deprivation measures are relative measures it is possible to look only at the SOAs within Newry, Mourne and Down LGD.
- This allows you to explore specific types of deprivation within the area and not just the MDM.

Other Products

Online Resources / User Engagement

- 8 measures across 890 SOAs, within 11 LGDs
- That's a lot of information (over 7,000 ranks)
- Deprivation team has developed online resources to make all the information readily accessible – **demos to follow**
 - Plus summary sheets for 100 most deprived (MDM) and 10 most deprived in each domain for each LGD
- We have started our programme of user engagement to:
 - To provide support to central and local government, the voluntary sector, academia etc.
 - Outline the results and how they can be accessed
 - Educate users on how they can and cannot be used
- We have factored in 6 months for these outreach activities

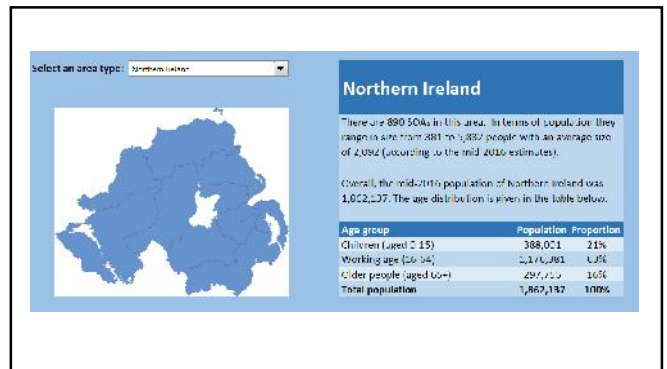
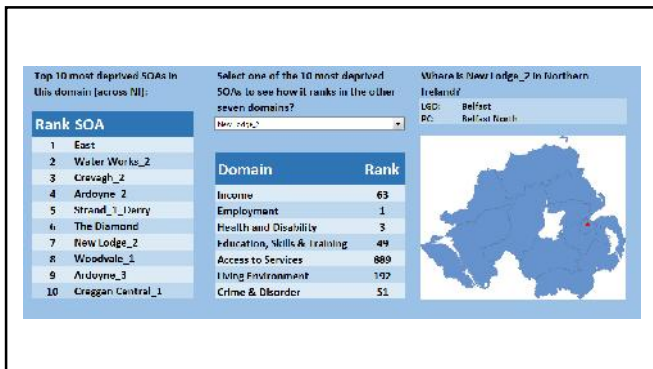
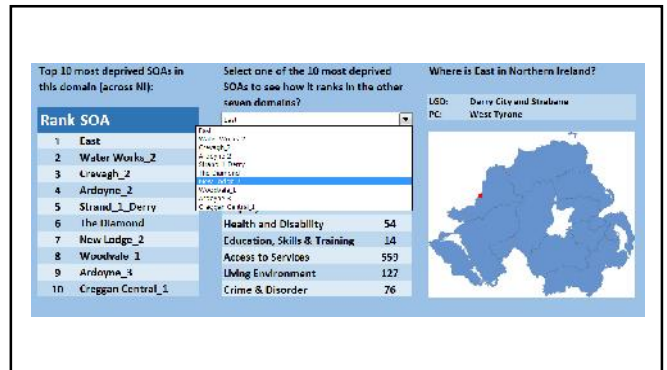
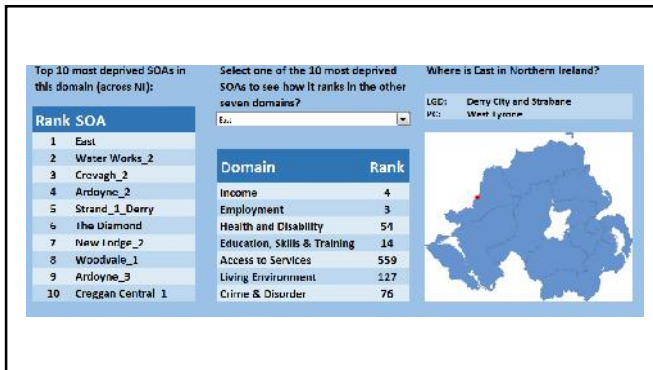
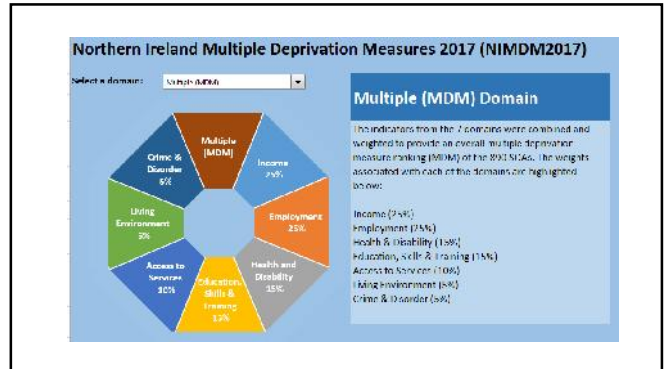
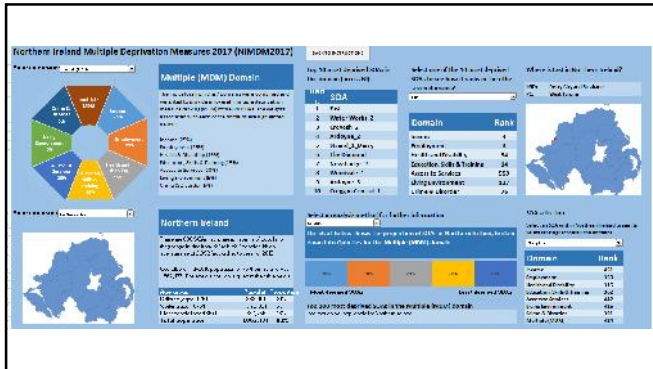
Still to come

- Measures for Small Areas
 - 4,537 of these, which nest within SOAs
 - Helpful in identifying pockets of deprivation within SOAs
 - Average size of 410 people
- Estimated measures for the new electoral wards
- Deprivation measures for children
- Recommendations for future updates
- Exploring the link between population decline and deprivation

Demo of Online Resources

Analysis Package-

<https://www.nisra.gov.uk/statistics/deprivation/northern-ireland-multiple-deprivation-measure-2017-nimdm2017>



Select an area type: Northern Ireland

Select an area: Northern Ireland

Northern Ireland

There are 891 SOAs in this area. In terms of population they range in size from 381 to 5,832 people with an average size of 2,097 (according to the mid-2016 estimates).

Overall, the mid-2016 population of Northern Ireland was 1,862,137. The age distribution is given in the table below.

Age group	Population	Proportion
Children (aged 0-15)	388,201	21%
Working age (16-64)	1,176,381	63%
Older people (aged 65+)	297,725	16%
Total population	1,862,137	100%

Select an area type: Local Government Districts

Select an area: Antrim and Newtownabbey

Antrim and Newtownabbey LGD

There are 72 SOAs in this area. In terms of population they range in size from 1,227 to 3,669 people with an average size of 1,954 (according to the mid-2016 estimates).

Overall, the mid-2016 population of Antrim and Newtownabbey LGD was 141,054. The age distribution is given in the table below.

Age group	Population	Proportion
Children (aged 0-15)	27,648	21%
Working age (16-64)	89,084	63%
Older people (aged 65+)	24,321	16%
Total population	141,054	100%

Select an area type: Local Government Districts

Select an area: Antrim and Newtownabbey

Northern Ireland

There are 72 SOAs in this area. In terms of population they range in size from 1,227 to 3,669 people with an average size of 1,954 (according to the mid-2016 estimates).

Overall, the mid-2016 population of Northern Ireland was 1,862,137. The age distribution is given in the table below.

Age group	Population	Proportion
Children (aged 0-15)	388,201	21%
Working age (16-64)	1,176,381	63%
Older people (aged 65+)	297,725	16%
Total population	1,862,137	100%

Select an area type: Local Government Districts

Select an area: Newry, Mourne and Down

Newry, Mourne and Down LGD

There are 84 SOAs in this area. In terms of population they range in size from 1,531 to 8,750 people with an average size of 2,322 (according to the mid-2016 estimates).

Overall, the mid-2016 population of Newry, Mourne and Down LGD was 177,816. The age distribution is given in the table below.

Age group	Population	Proportion
Children (aged 0-15)	40,187	23%
Working age (16-64)	111,095	63%
Older people (aged 65+)	26,534	15%
Total population	177,816	100%

Select an analysis method for further information: Quintiles

The chart below shows the proportion of SOAs in Newry, Mourne and Down LGD, broken down into Quintiles for the Multiple (MDM) domain

Most deprived SOAs | Least deprived SOAs

Top 100 most deprived SOAs in the Multiple (MDM) domain

Within the Multiple (MDM) domain, 8 of the top 100 most deprived areas in Northern Ireland are in Newry, Mourne and Down LGD.

Select an SOA within Newry, Mourne and Down LGD to see its MDM rankings across all domains

Domain	Rank
Income	169
Employment	574
Health and Disability	590
Education, Skills & Training	441
Access to Services	155
Living Environment	236
Crime & Disorder	530
Multiple (MDM)	365

Select an analysis method for further information: Quintiles

The chart below shows the proportion of SOAs in Newry, Mourne and Down LGD, broken down into Quintiles for the Multiple (MDM) domain

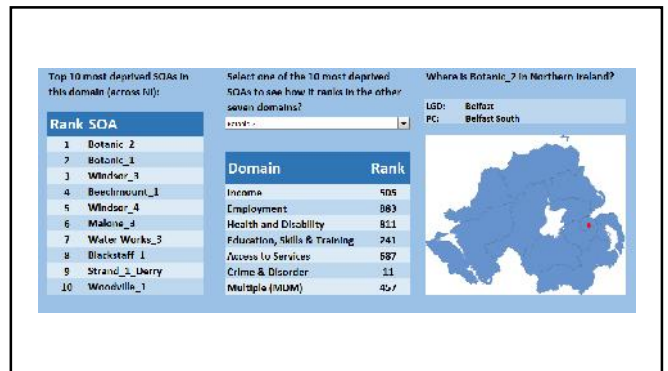
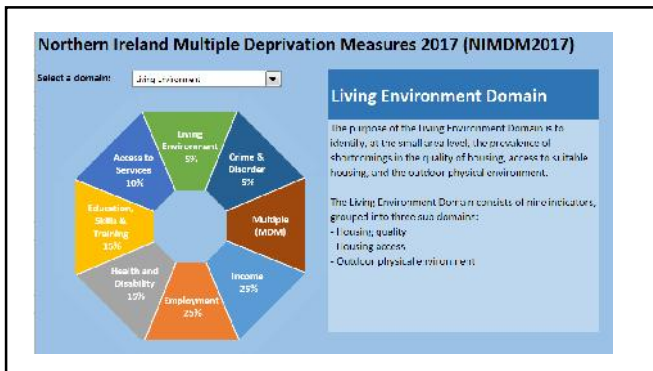
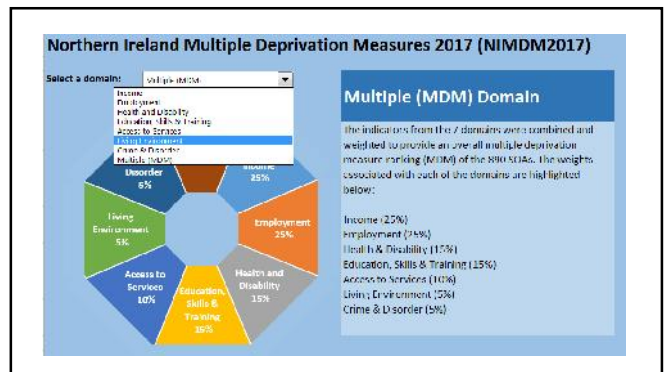
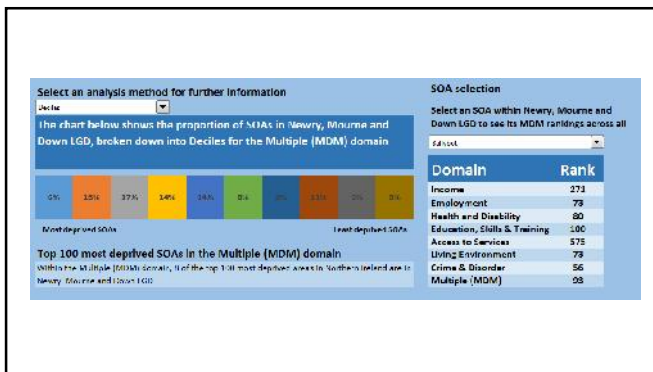
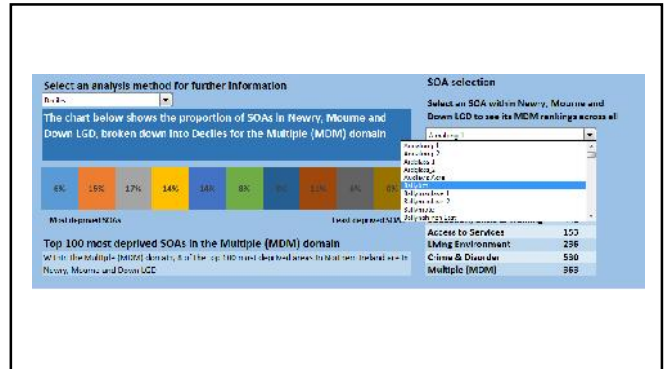
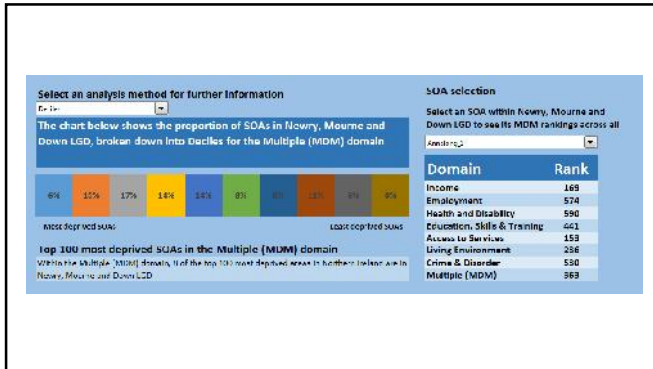
Most deprived SOAs | Least deprived SOAs

Top 100 most deprived SOAs in the Multiple (MDM) domain

Within the Multiple (MDM) domain, 8 of the top 100 most deprived areas in Northern Ireland are in Newry, Mourne and Down LGD.

Select an SOA within Newry, Mourne and Down LGD to see its MDM rankings across all domains

Domain	Rank
Income	169
Employment	574
Health and Disability	590
Education, Skills & Training	441
Access to Services	155
Living Environment	236
Crime & Disorder	530
Multiple (MDM)	365



Top 10 most deprived SOAs in this domain (across NI):

Rank	SOA
1	Botanic_2
2	Botanic_1
3	Windsor_3
4	Beechmount_1
5	Windsor_4
6	Malone_3
7	Water Works_4
8	Blackhall_1
9	Strand_1_Derry
10	Woodville_1

Select one of the 50 most deprived SOAs to see how it ranks in the other seven domains?

Where is Botanic_2 in Northern Ireland?

LGD: Belfast
PC: Belfast South

Domain	Rank
Health and Disability	811
Education, Skills & Training	241
Access to Services	687
Crime & Disorder	21
Multiple (MDM)	457

Top 10 most deprived SOAs in this domain (across NI):

Rank	SOA
1	Botanic_2
2	Botanic_1
3	Windsor_3
4	Beechmount_1
5	Windsor_4
6	Malone_3
7	Water Works_3
8	Blackhall_1
9	Strand_1_Derry
10	Woodville_1

Select one of the 10 most deprived SOAs to see how it ranks in the other seven domains?

Where is Strand_1_Derry in Northern Ireland?

LGD: Derry City and Strabane
PC: Foyle

Domain	Rank
Income	10
Employment	4
Health and Disability	36
Education, Skills & Training	203
Access to Services	899
Crime & Disorder	10
Multiple (MDM)	5

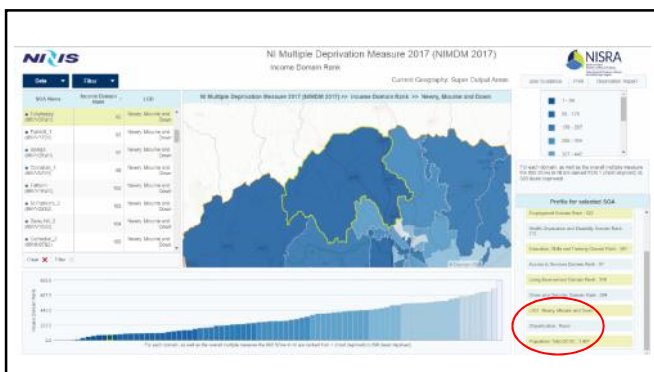
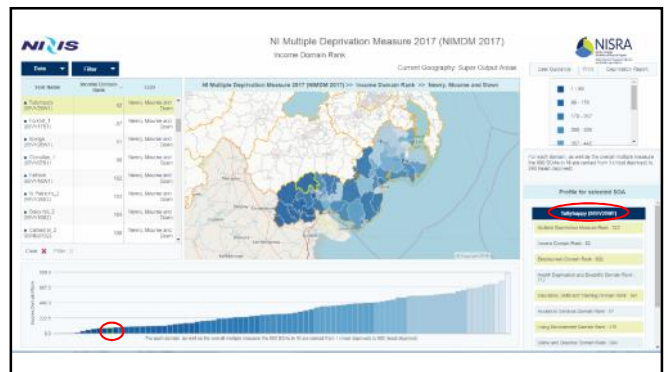
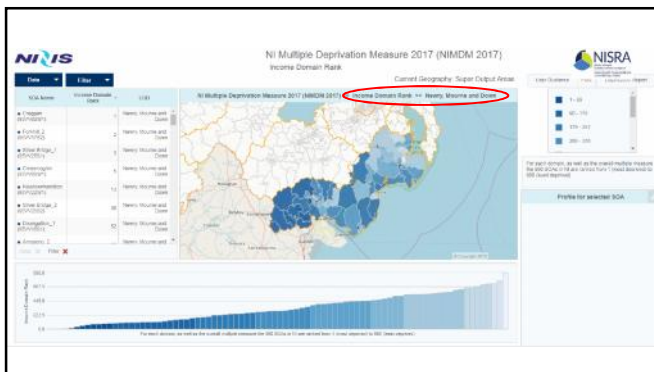
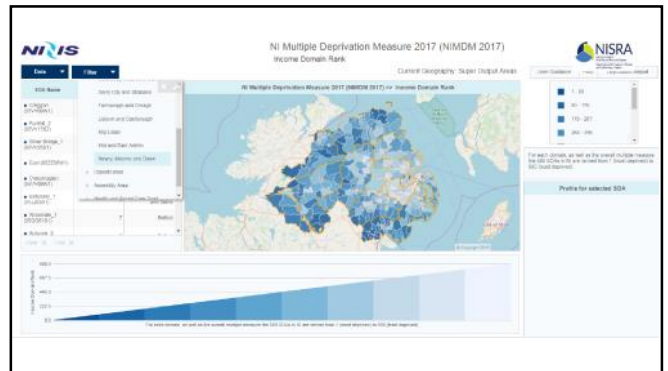
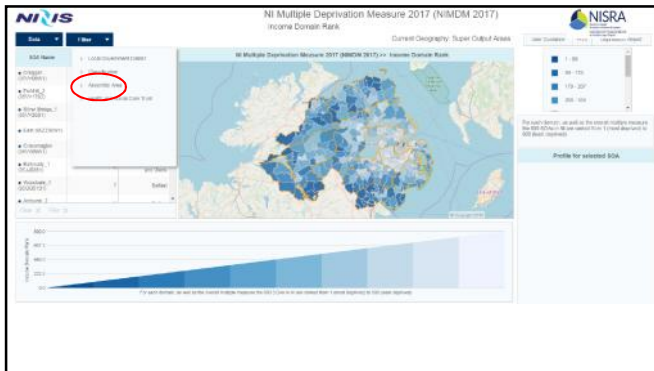
Interactive Maps-

http://www.ninis2.nisra.gov.uk/InteractiveMaps/Deprivation/Deprivation%202017/SOA_Deprivation_Map/atlas.html

NI Multiple Deprivation Measure 2017 (MMDM 2017)
Multiple Deprivation Measure Rank

NI Multiple Deprivation Measure 2017 (MMDM 2017)
Multiple Deprivation Measure Rank

NI Multiple Deprivation Measure 2017 (MMDM 2017)
Multiple Deprivation Measure Rank



Detailed Tables -

<https://www.nisra.gov.uk/statistics/deprivation/northern-ireland-multiple-deprivation-measure-2017-nimdm2017>

Multiple Operations Measure Bank	Income Details	Employment	Health Expenditure and Disability	Education, Skills and Training	Access to Services	Living Environment	Crime and Disorder
...

Multiple Operations Measure Bank	Income Details	Employment	Health Expenditure and Disability	Education, Skills and Training	Access to Services	Living Environment	Crime and Disorder
...

Multiple Operations Measure Bank	Income Details	Employment	Health Expenditure and Disability	Education, Skills and Training	Access to Services	Living Environment	Crime and Disorder
...

Multiple Operations Measure Bank	Income Details	Employment	Health Expenditure and Disability	Education, Skills and Training	Access to Services	Living Environment	Crime and Disorder
...

Multiple Operations Measure Bank	Income Details	Employment	Health Expenditure and Disability	Education, Skills and Training	Access to Services	Living Environment	Crime and Disorder
...

Multiple Operations Measure Bank	Income Details	Employment	Health Expenditure and Disability	Education, Skills and Training	Access to Services	Living Environment	Crime and Disorder
...

Income Domain

- 14 SOAs in Newry, Mourne and Down LGD are in the 100 most deprived when we look at Income Deprivation

Income Deprivation Affecting Children

- 12 SOAs in Newry, Mourne and Down LGD are in the 100 most deprived when we look at Children living in Income deprived households

Income Deprivation Affecting Older People

- 21 SOAs in Newry, Mourne and Down LGD are in the 100 most deprived when we look at older people living in Income deprived households

Questions