

Outcome: All People in Newry, Mourne and Down benefit from prosperous communities

Indicator: Level of Income and Wealth

Income and wealth are essential components of well-being of individuals and societies. Both income and wealth expand people's consumption possibilities, providing them with the resources to satisfy their needs. Wealth also allows individuals to smooth consumption over time and to protect them from unexpected shocks that could lead to poverty and destitution. Income and wealth also bring non-economic benefits, such as higher health status and education, higher life satisfaction and the possibility of living in safer and cleaner areas.

Measures:

Level of average earnings

Shift in spectral spread of business

Level of skills development across population

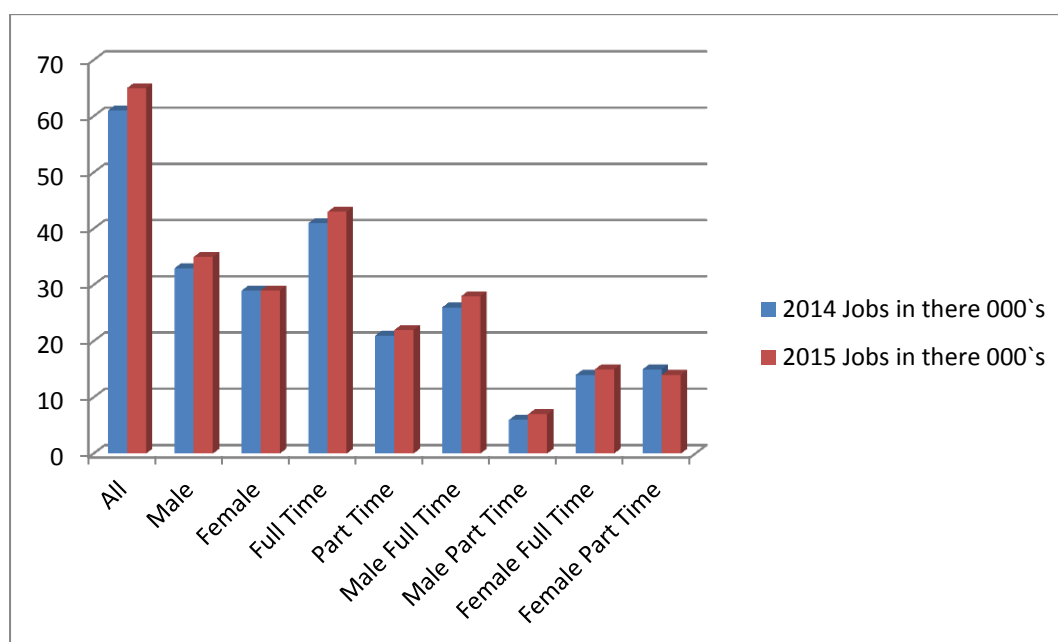
Level of Average Earnings

Below is a table showing the number of jobs in the Newry Mourne and Down District Council area between 2014 and 2015 and the breakdown of these jobs into Full Time or Part Time and Male or Female.

	2014	2015
Newry Mourne and Down	Jobs in there 000`s	Jobs in there 000`s
All	61,000	65,000
Male	33,000	35,000
Female	29,000	29,000
Full Time	41,000	43,000
Part Time	21,000	22,000
Male Full Time	26,000	28,000
Male Part Time	6,000	7,000
Female Full Time	14,000	15,000
Female Part Time	15,000	14,000

Source: ASHE by NI geographies Economy NI.

From the table above and chart below we can see that over all jobs have increased from 2014 to 2015 from 61,000 to 65,000 in the Newry Mourne and Down District Council area. There are more males than females in work full time, for both 2014 and 2015, while there are more Female part time workers in 2014 and 2015 than male.



	2014	2015
Newry Mourne and Down	AVG Gross Weekly Wage £	AVG Gross Weekly Wage £
All	356.5	370.3
Male	391.0	426.8
Female	281.1	288.5
Full Time	462.0	479.1
Part Time	161.0	159.4
Male Full Time	464.0	496.4
Male Part Time	168.0	183.4
Female Full Time	457.5	478.3
Female Part Time	160.8	164.3

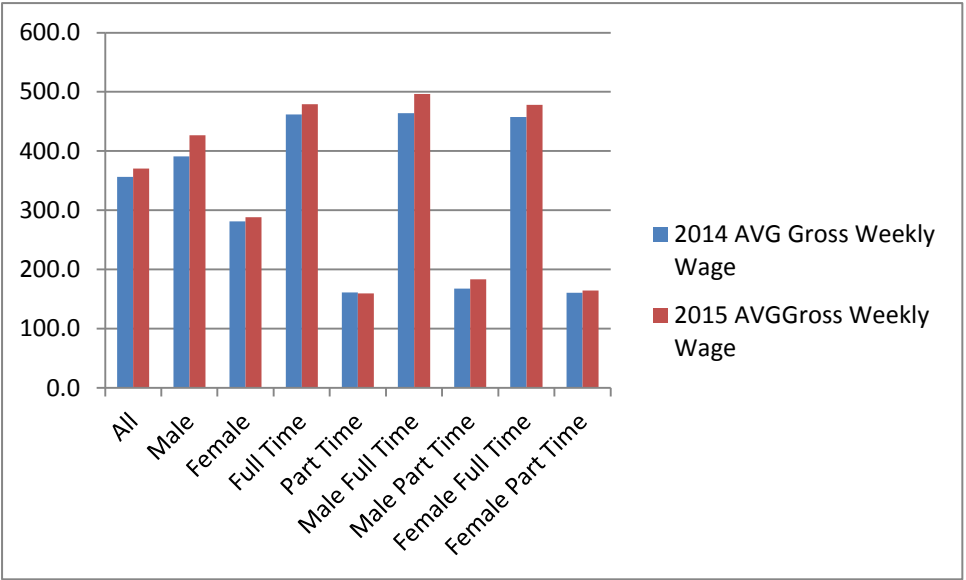
Source: ASHE by NI geographies Economy NI.

From the table above and chart below we can see that overall average weekly earnings have increased from 2014 to 2015. The part-time average weekly wage however has experienced a decrease of £1.60 between 2014 and 2015.

The median gross annual wage for earnings for full time private sector employees is around £20,000 in the Newry Mourne and Down District Council area.



Source: Invest NI

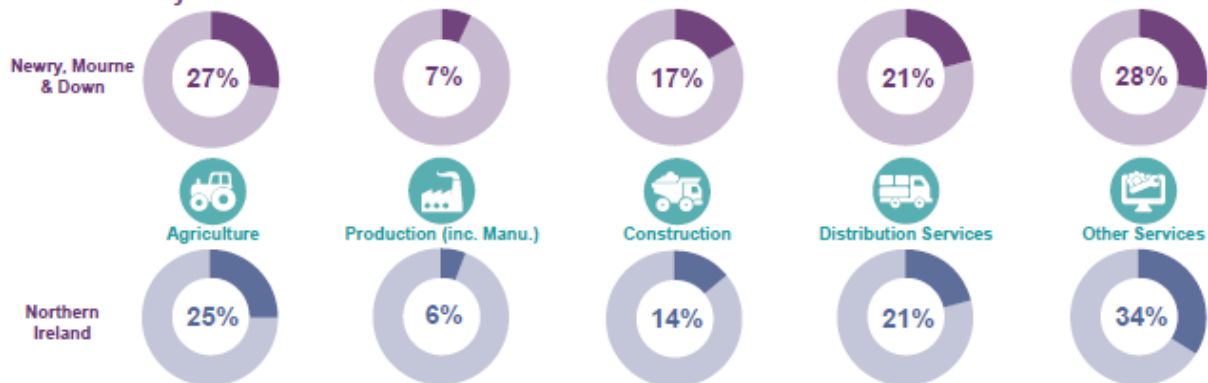


Shift in spectral spread of business

Data on this specific measure was difficult to ascertain and much of it was available at NI level only.






Below is an extract from Invest NI showing spectral spread of businesses across Newry Mourne and Down District Council compared with Northern Ireland for 2014. We can see that NMDDC is above the NI average for Construction, Production and Agriculture.

Businesses by Sector



The chart below forecasts growth in manufacturing, construction and private services by 2025 with a shrinkage in jobs within the private sector.

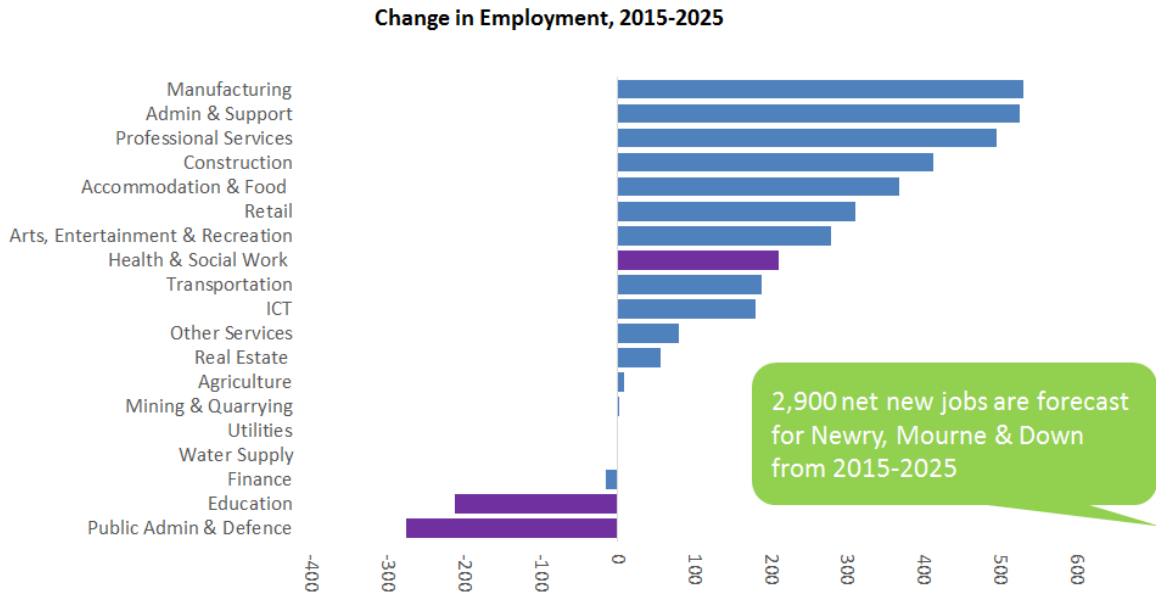
Newry, Mourne & Down District Council Job Growth

	Baseline (68,900)		Upper Scenario (72,200)	
	Change in Jobs 2015-2025	Total Employment 2025	Change in Jobs 2015-2025	Total Employment 2025
 Production	Unchanged	5,500	+300	5,800
 Manufacturing	+500	7,400	+800	7,700
 Construction	+500	6,600	+700	6,800
 Public Sector	-200	18,400	Unchanged	18,600
 Private Services	+2,200	31,000	+4,500	33,300

Note: Forecast figures have been rounded to the nearest 100

Labour Market (Sector Breakdown)

Growth in the private sector



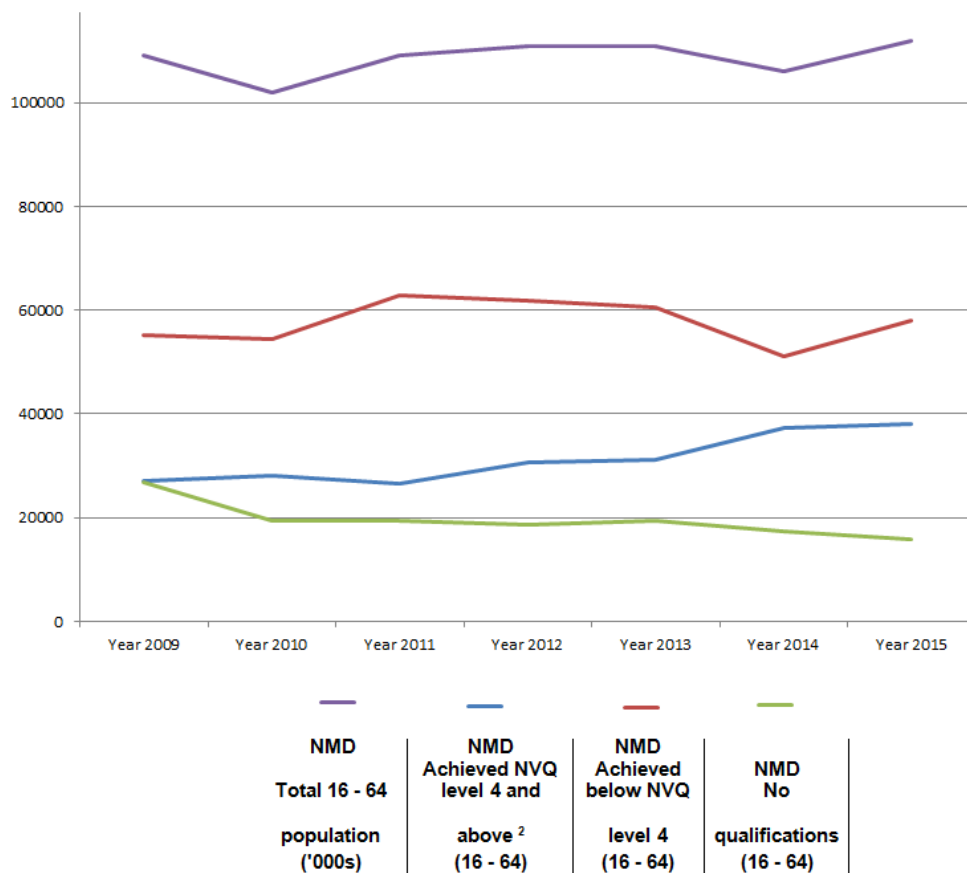
The forecasted labour market breakdown above for NMDDC shows significant growth in manufacturing, admin and support and professional services. It also highlights a decline in jobs in public admin and defence as well as in education.

Levels of skills development across population

2009 to 2015 Newry Mourne and Down Qualifications Year	NMD Total 16 - 64 population (^{'000s})	NMD Achieved NVQ level 4 and above ² (16 - 64)	NMD Achieved below NVQ level 4 (16 - 64)	NMD No qualifications (16 - 64)
Year 2009	109000	27032	55154	26814
Year 2010	102000	28050	54470	19480
Year 2011	109000	26600	62900	19500
Year 2012	111000	30636	61716	18648
Year 2013	111000	31191	60495	19314
Year 2014	106000	37418	51092	17490
Year 2015	112000	38192	58016	15904

The table above shows the qualifications attained by persons (aged 16-64) in the Newry Mourne and Down district council area from 2009 to 2015.

Qualifications attained by persons (aged 16-64) in the Newry Mourne and Down district council area 2009 to 2015.



Looking at the number who have achieved NVQ Level 4 and above we can see that despite a dip between 2010 and 2011, the numbers have been increasing steadily and are at a high of 38,192 for 2015.

The number of people that have achieved below NVQ level 4 during 2009-2015 has fluctuated continuously over the 7 year period with a high of 61,716 in 2012 to a current figure of 58,016.

Looking at those with no qualifications we can see that this has decreased significantly over the 7 year period from 26,814 in 2009 to 15,904 in 2015, showing a considerable decrease of 68.6%

