

Outcome: All people in Newry Mourn and Down get a good start in life and fulfil their lifelong potential

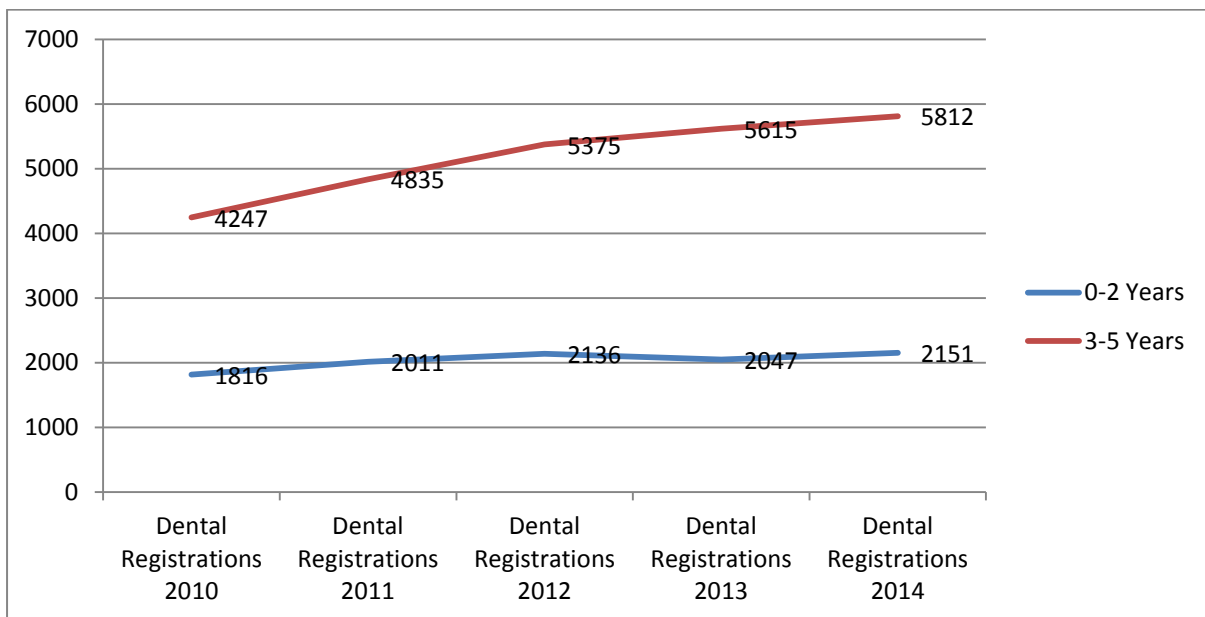
Indicator: Level of Early Years Support

Intervening early and as soon as possible to tackle problems emerging in the lives of communities, families and young people is key to promoting improved levels of wellbeing. Early developmental support is essential to ensuring a good start in life and this in term underpins the overall wellbeing of the population. (CYPSP)

- Measures:**
- Children aged 0-4 registered with Dentist
 - Birth Weight Data
 - Level of Preschool Nursery Places

Children aged 0-4 registered with Dentist – Dental Registrations 0-2 and 3-5

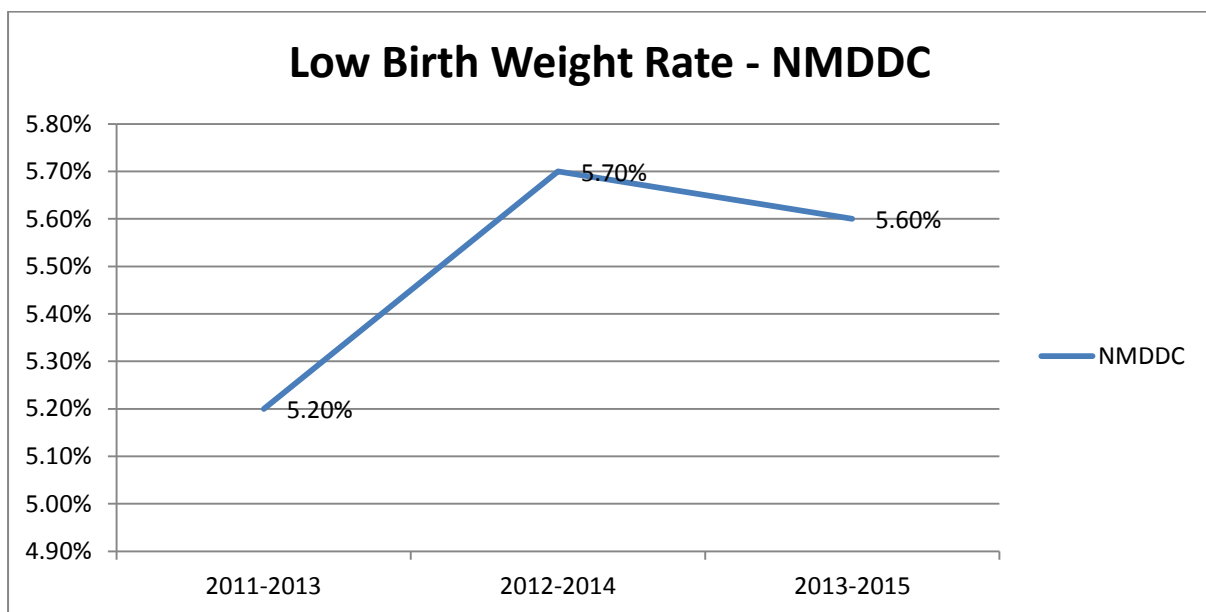
Dental registrations in children are an indicator of general good health and wellbeing. The data analysed in the graphs below are from 2010 – 2014. The data for 2010-2013 is made up of figures combined from the former Down and Newry and Mourne councils as new LGD data is not available for those years.



The graphs show that dental registrations have been increasing year on year for 3-5 year olds and while there was a slight decrease in registrations for the 0-2 year age group between 2012 and 2013 this has again increased in 2014.

Birth Weight Data – Low Birth Weights

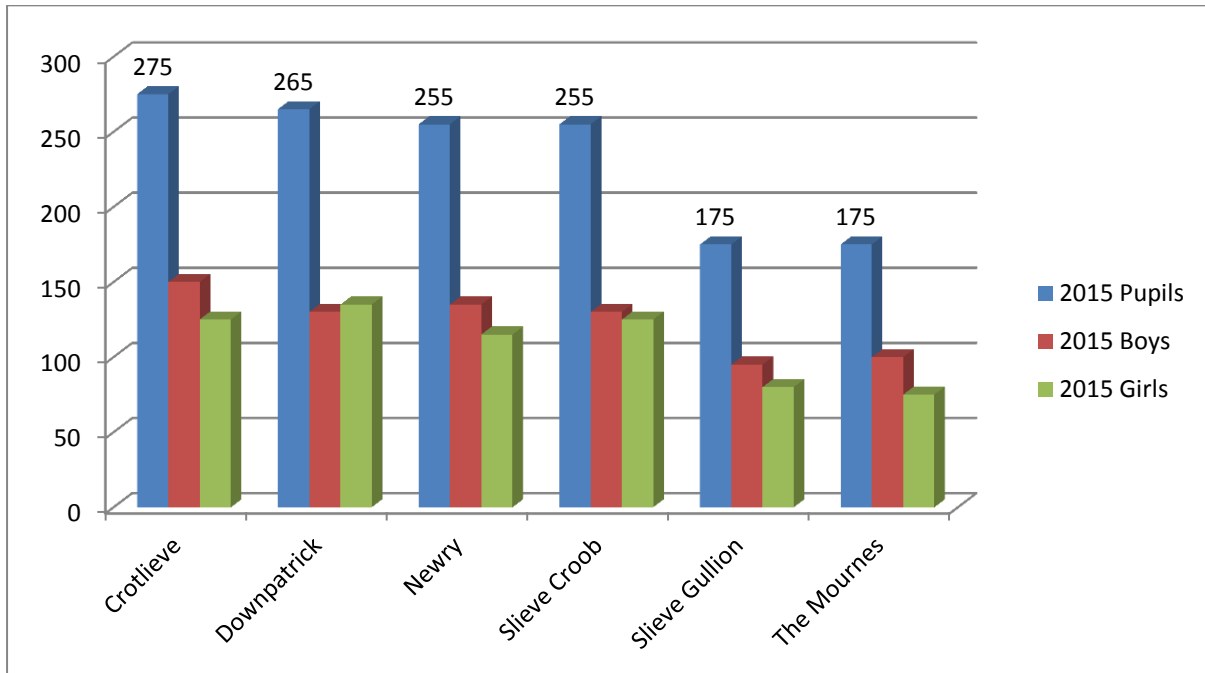
Low birth weights are driven by teenage mums and smoking mothers. The overall NI figure for this indicator is 6.1% and has been this since the mid-noughties. The figure for NMDDC has been consistently below this NI average for the past 6 years as shown in the graph below. There was however an increase between 2011 and 2014 but this has begun to decrease again in 2015.



Level of Pre-school Nursery Places – Nursery & Pre-School Pupils

The issue of pre-school and nursery places was a prominent issue during our engagement process. The tables and charts below show the number of pre-school and nursery pupils at DEA and Ward Level throughout our district for 2015.

Nursery and Pre-school Pupils by Gender 2015



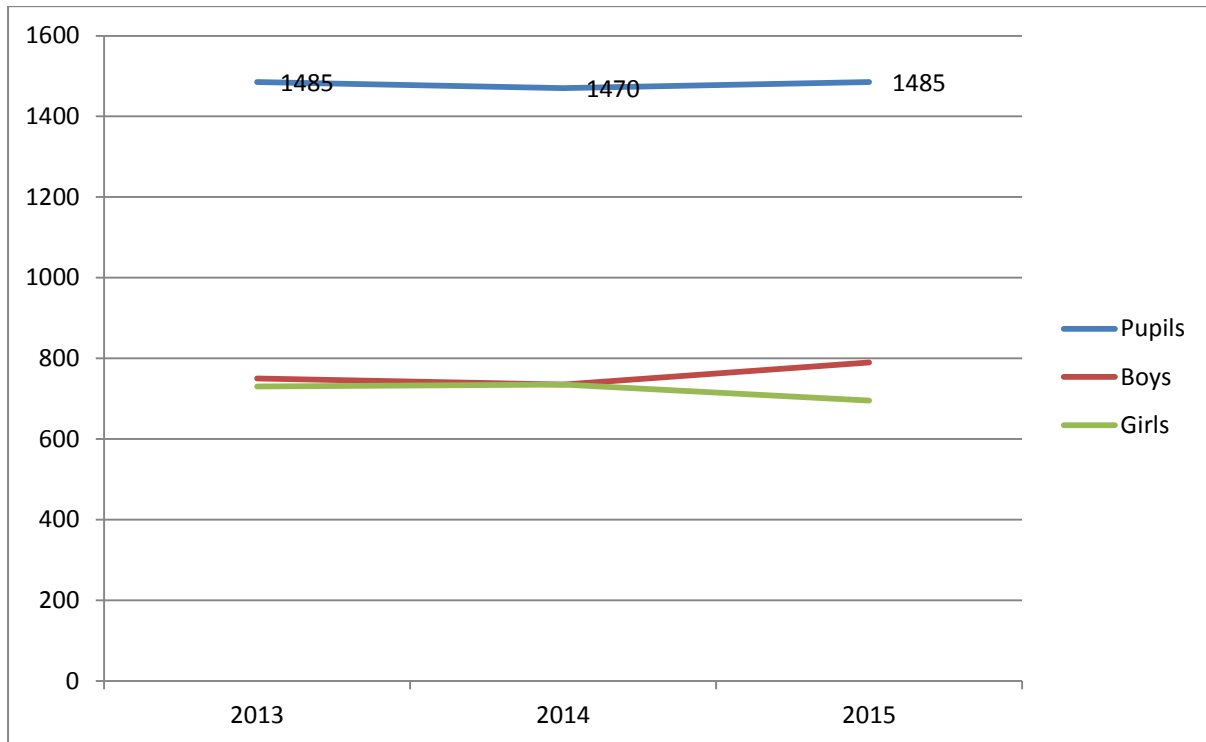
We can see that Crotlieve had the highest number of nursery and pre-school pupils in 2015 with 275 with Slieve Gullion and the Mournes numbering the lowest with 175 in each DEA.

Analysing ward level 2015 data we see from the table below that Cathedral ward had the highest number of nursery and pre-school pupils with 150 followed by Kilkeel with 110. Eight of the forty one wards had no pupils.

Ward	Pupils
Cathedral	150
Kilkeel	110
Abbey	80
Warrenpoint	80
Ballybot	70
Ballyward	70
Drumaness	65
Castlewellan	60
Burren	50

Crossgar and Killyleagh	50
Hilltown	50
Mayobridge	50
St. Patrick's	50
Strangford	50
Fathom	45
Forkhill	45
Lecale	45
Ballydugan	40
Mullaghbane	40
Newtownhamilton	40
Bessbrook	25
Derryleckagh	25
Kilmore	25
Annalong	20
Donard	20
Dundrum	20
Quoile	20
Rostrevor	20
Camlough	15
Saintfield	15
Binnian	10
Crossmaglen	10
Lisnacree	10
Ballynahinch	0
Damolly	0
Derryboy	0
Drumalane	0
Knocknashinna	0
Murlough	0
Tollymore	0
Whitecross	0

Nursery and Pre-school Pupils - NMDDC



The graph shows that over the past three years analysed (2013-2015) there has been little change in the number of nursery and pre-school pupils in NMDDC. A slight variation can be seen in the gender ratio with more girls than boys in 2013, equal in 2014 and now more boys than girls in 2015.