

Comhairle Ceantair an Iúir, Mhúrn agus an Dúin
Newry, Mourne and Down District Council

Clár Samhraidh na nIarsmalann Museums Summer Programme



Ag freastal ar an Dúin
agus Ard Mhacha Theas
Serving Down
and South Armagh



Comhairle Ceantair
an Iúir, Mhúrn agus an Dúin
Newry, Mourne and Down
District Council

DOWN COUNTY MUSEUM

Now Open

The Museum's major extension project, three new permanent galleries and a new tearoom, opened in September 2015. Almost £500,000 of key funding was facilitated by the East Border Region and part-financed by the European Union's INTERREG IVA Cross Border Programme managed by the Special EU Programmes Body. The aim of the project was to conserve the Downpatrick High Cross, a unique early Christian artefact and display it in a purpose built gallery; continue to develop the Early Christian and St Patrick-related tourism product that Downpatrick has to offer; provide the Museum with much needed space to display its collection of farming and maritime objects and provide a refurbished tearoom for visitors.

The three new permanent galleries provide a host of fascinating detail on key areas of local history and add greatly to visitors' enjoyment of the Museum.

Raising the Cross in Down

Tells the story of the Downpatrick High Cross and its place in the early Christian tradition of County Down. An interesting collection of artefacts illustrates the story of the development of Christianity in the locality, with the centrepiece being the 10th century Downpatrick High Cross displayed in a specially constructed gallery.

Harvests from Land and Sea

Displays how the farming and fishing industries have developed over time and how our landscape, culture and identity have been shaped by those working on the land and sea.

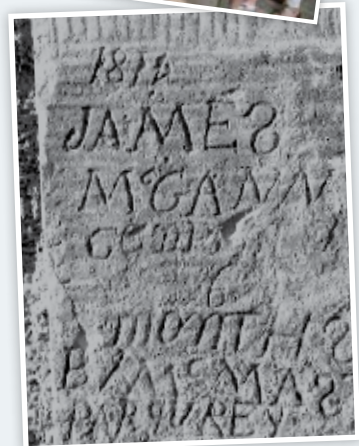
'At Present Confined'

Life in the old Gaol of Down:

Uncovers the history of the Gaol and tells the stories of some of the prisoners confined here from 1796 to 1830.

Cathedral View Tearoom

Run by Mainstay DRP (Downe Residential Project), it provides a great range of delicious snacks and lunches made with locally sourced ingredients. The tearoom also offers a great view of the Cathedral, Mound of Down and across the Quoile River to Inch Abbey.



Down Through Time

'**Down Through Time**' is the permanent exhibition displaying the history of County Down from 9,000 years ago to the present. The exhibition brings together over one thousand objects, documents, paintings, photographs and hands-on features to provide an intriguing account of how County Down has developed over time.

With sections on prehistory, St Patrick, early Christian Down, the Vikings and the Normans, the early modern period, the Victorians, the First and Second World Wars and modern times, the exhibition shows how the people of Down have lived and worked in changing and turbulent times.

Hands-on features enable visitors to undertake a range of enjoyable activities from dressing up and puzzle solving to exploring sites in the locality. A visit to **Down Through Time** is a must for all ages!

Educational Visits and Behind the Scenes Tours

Down County Museum has a collection of over 10,000 objects and almost 50,000 photographs. Museum staff are available to visit your venue to give talks on all aspects of the collection. We can also arrange for smaller community and educational groups to avail of special behind the scenes tours.

For more information on arranging tours and staff talks email: mail@downcountymuseum.com or telephone 028 4461 5218



Exhibitions

From Ballyhosset to Bengal



This display features a selection of documents, photographs, medical instruments and uniforms belonging to Lieutenant-Colonel Alexander Silcock, which were recently donated to Down County Museum. Born in Ballyhosset in 1856, Lieutenant-Colonel Silcock joined the Indian Medical Service in 1881 and had a distinguished career as a surgeon in India.

Date

Until Autumn 2019

Venue

Down County Museum

Admission:

FREE

Down at the Races



This exhibition features objects from the museum's collection including racing silks, the weighing scales from the old race course, documents, trophies and much more as well as a number of important loan items, all illustrating the story of racing in Down.

Date

Until end May

Venue

Down County Museum

Admission:

FREE

When We Were Young



This new exhibition looks at how children's lives have changed over the past century. The display will include objects relating to education and schooldays, toys and games and the experiences of children in County Down communities. This is sure to be a fascinating account of how times and expectations have changed for children. The exhibition will feature a wealth of objects and documents which will bring back memories for many.

Date
Until Autumn 2019

Venue
Down County Museum

Admission:

FREE

Heydays and Holidays



Our new exhibition looks at how holidays and special days were celebrated in the past and the wider development of leisure in our communities. The exhibition will feature a wide range of objects and images.

Date
From 7 June

Venue
Down County Museum

Admission:

FREE

Events

Tin Whistle Classes for Adults (Beginners)

Tin Whistle Classes for Adults (Intermediate)



Don't miss this opportunity to learn to play a traditional instrument.

Danny McGreevy is one of the finest traditional musicians in County Down and is looking forward to teaching an adult group at the Museum. These classes and a little daily practice, will ensure that you will be able to play a mixture of well known and traditional airs. Please enrol in advance at the Museum.

Date

30 April – 25 June
(9 classes)

Venue

Down County
Museum

Time

10.30am – 11.30pm

Admission:

£60
(Payable in advance
to the Friends of Down
County Museum)

Now that you've mastered the basics come along and perfect your skills and learn to play a wider variety of tunes! Tutor Danny McGreevy will teach you how to incorporate new techniques into your repertoire.

Please enrol in advance
at the Museum.

Date

30 April-25 June
(9 classes)

Venue

Down County
Museum

Time

11.30am – 12.30pm

Admission:

£60
(Payable in advance
to the Friends of Down
County Museum)

Down Time Events

Bus Tour of 1798 Sites



This bus tour will take participants to a range of local sites associated with the 1798 rebellion. The tour will begin at the Museum and take in Killyleagh, Killinchy, Saintfield and Ballynahinch. During the course of the tour participants can learn more about local people involved in the rebellion, from leaders to those who found themselves caught up in the events of this turbulent time in our history.

Date

Saturday 8 June

Time

2pm – 5.15pm

Venue

Departing from
Down County
Museum

Admission

£10
(Pre-booking
applies)

The Horse in Art: A lecture by Mary McGrath, Hugh Lane Gallery, Dublin

As part of the Down Time Festival, we are presenting this fascinating lecture on the history of the horse in art. From ancient engravings and sculptures to the work of Jack B Yeats, representations of the horse have featured in art from earliest times. Find out more in this free lecture.



Date

Wednesday
12 June

Time

7.30pm

Venue

Down County
Museum

Admission:

FREE

*Blood Horses, a reading
by Moyra Donaldson*



Award winning international poet Moyra Donaldson from Co. Down has had a lifelong involvement with horses. Last year, in collaboration with artist Paddy Brennan, she produced the stunning Blood Horses, a work of poetry and images. The poems in Blood Horses are rooted in the stories of the three Arab stallions that were the founding fathers of the modern thoroughbred, The Byerley Turk, The Darley Arabian and The Godolphin Barb. This is a wonderful opportunity to hear one of County Down's leading poets read from her work.

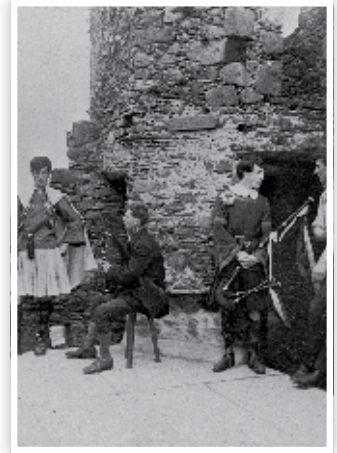
Date
Thursday 13 June

Time
1pm

Venue
Down County
Museum

Admission:


*The Bigger Picture:
The Legacy of
FJ Bigger in Lecale*



This conference is part of a PEACE IV funded project on the legacy of the antiquarian FJ Bigger in Lecale. The project includes a number of workshops and study visits but the conference is open to the general public. The day will include lectures on Bigger and his work and visits to sites associated with him. Please contact biggerlecale@gmail.com for more information or to register for the conference.

Date
Friday 14 June

Time
9.30am

Venue
Down County
Museum

Admission:


Downpatrick Artisan Market at the Museum



Now a regular and highly popular feature of our programme the monthly Artisan Markets feature all the best in delicious, locally produced food and non-alcoholic drink as well as beautifully made arts and crafts. This event is organised by Down Community Collective with financial support from Newry, Mourne and Down District Council.

Date

Saturday 18 May,
Saturday 15 June,
Saturday 20 July,
Saturday 17 August

Time

11am – 3pm

Admission:

FREE

Venue

Down County Museum

Community Dig



We will be running a FREE PEACE IV funded community dig this summer on Cathedral Hill, especially for 16-24 year olds. The project will involve 26 hours learning (4 days) learning more about archaeology, finding out how archaeologists work and giving you the chance to get involved in uncovering the past! A great community activity for the CV! The programme will take place in late July and August. Final dates are to be confirmed, but if you are interested in attending please contact us to pre register.

Date

July/August

Admission:

FREE

Venue

Down County Museum



This project supported by Newry, Mourne and Down District Council and the European Union's Peace IV Programme; managed by the Special EU Programmes Body (SEUPB)

Artisan Market and Countrylife Event



As well as the Artisan Market, this event will feature traditional craft demonstrations, tours of our farming galleries and collections and a chance to enjoy our exhibitions.

Plus a chance to see the renowned Armagh Rhymers perform their traditional mumming and music shows.

Date
Saturday 15 June

Time
11am – 3pm

Venue
Down County Museum

Admission:
FREE

Hands-on History, Art and Drama Summer Schemes for 10-16 year olds



We will be running FREE PEACE IV funded week long summer schemes for 10-16 year olds. The activities will combine art, drama and history in an exciting programme that will take you on a journey where you can explore, experiment and investigate a whole different world! The programmes will be available at Down County Museum and Newry and Mourne Museum during July and August. Final dates are to be confirmed but if you are interested in attending please contact us to pre-register. (Participants are required to take a packed lunch each day).

Date
July and August

Time
10am – 3pm

Venue
Down County Museum
Newry and Mourne Museum

Admission:
FREE

Join the Friends of Down County Museum



The Friends of Down County Museum was founded in 1989 to help the Museum in various ways – raising money for Museum projects, acting as ambassadors within the community and lobbying on the Museum's behalf when required.

Over the last 29 years we have bought paintings and many other objects for the collection, purchased conservation and photographic equipment and assisted with the cost of research, exhibitions and publications.

The Friends will be celebrating their 30th anniversary in 2019 and hope to mark this event in a very special way. The Museum needs your support as much as ever – indeed we aim to increase our membership in order to maintain this.

Membership brings you the following benefits:

- Invitations to exhibition openings and other special events
- Talks and tours arranged during the year
- Social events
- Opportunities to participate in special projects
- 10% discount in the Museum shop.

Annual membership: single rate £15 or reduced family rate £20, payable 1 January
Special rate for this year only. If you are a new member joining between September and December your subscription will last until the end of the following year.

Contact the Museum for further information or the Secretary, Lesley Simpson
LSimpsonballoo@gmail.com

Birthday Parties at Down County Museum

Why not celebrate your child's birthday at Down County Museum? We run Viking themed, Victorian themed and craft themed birthday parties for boys and girls aged from 6 years upwards.

Your birthday party will include:

- Themed games and trails through the Museum
- Dressing up in replica costume
- Themed craft activities
- You can also mix and match activities from each of our themed parties.

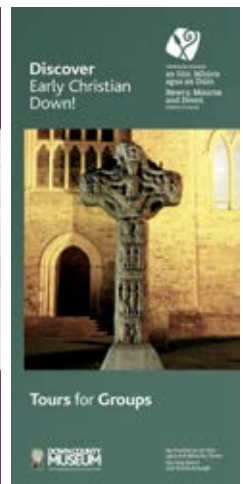
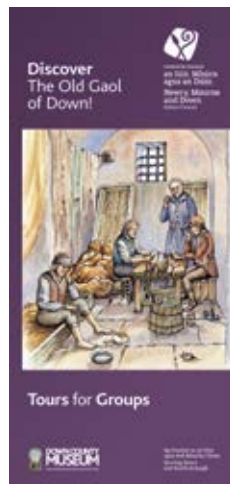
Contact us to discuss your requirements.

For further details or to book a birthday party please contact Down County Museum on **028 4461 5218**



NEW Group Tours Available

New tour packages now available for groups. Contact us to find out more about our Discover Early Christian Down and our Discover the Old Gaol of Down tours.



Opening Hours:

Monday to Saturday: 10am – 4.30pm
Sundays: 1.30pm – 5pm

Admission:

Admission to the Museum is **free of charge**. There is however a small charge for some special events and for guided tours.

Accessibility:

The Museum is fully accessible for families with young children, visitors with mobility difficulties and wheelchair users. Toilets for visitors with disabilities and baby changing facilities are available also.

Visitor Facilities:

The Museum shop has an excellent range of books on local history, items of local crafts, children's goods and souvenirs.

Contact:

The Mall, Downpatrick
Co Down, BT30 6AH
T: 028 4461 5218
mail@downcountymuseum.com
www.downcountymuseum.com



Friends of Down County Museum

Education Services

Down County Museum provides curriculum linked learning sessions for Foundation Stage, KS1, KS2 and KS3 pupils. Our hands-on education programmes are designed to meet the areas of The World Around Us, Language and Literacy, the Arts, Religious Education, PDMU.

For more details contact
linda.mckenna@downdc.gov.uk

Room Hire



The Museum is an ideal venue for conferences, meetings or staff development days.

Located on the top floor of the restored cell block and fully accessible by lift or stairs, we have a large conference room capable of comfortably seating 100 people theatre or lecture style. The room can also accommodate 30 people seated around tables in a variety of formats. Facilities include WiFi, PA system (including loop-system), slide projector, overhead projector, screen, flip chart and PowerPoint system.

A smaller meeting room located downstairs in the restored cell block, can accommodate 30 people theatre or lecture style and 15 seated around tables. A large screen can be used for PowerPoint and dvd.

Both conference and meeting rooms are available for hire during Museum opening hours as well as out of hours. For full details on our conference and meeting facilities and for information on rates of hire, contact us on 028 4461 5218.

Newry & Mourne
MUSEUM



Welcome to Newry and Mourne Museum

Newry and Mourne Museum first opened in 1986 in Newry Arts Centre and moved to larger premises at Bagenal's Castle in March 2007.

The Castle's exact location was lost over the years due to constant adaptation of the building, not least when the premises were purchased by Arthur McCann Ltd in 1894 and converted into a bakery.

Rediscovered in 1996 when McCann's sold the site, the Castle has been sympathetically restored. During the restoration process, drawings from a survey of the Castle completed c.1568 allowed archaeologists to uncover many original features of the Castle and these have been interpreted for the visitor.

The main exhibitions in the Museum include prehistoric material, Newry as a merchant town, the working life of the area and modern experiences of living in a Border area.

Tours:

FREE tours of the main exhibitions are available each Sunday at 3pm. Numbers are limited to 20 and pre booking of places is advisable. For more information please contact 028 3031 3178 or 028 3031 3182.

New Audio guides:

For visitors who just wish to take a stroll through the galleries the Museum provides FREE audio guides in English and Irish which provide more information on the Castle and exhibits.

Opening Hours:

Monday–Saturday:
10am–4.30pm
Sundays: 1.30pm–5pm

Admission:

Admission to the Museum is **free of charge**



Exhibitions

In addition to the three main galleries, there are two temporary exhibition galleries, which have a vibrant programme of exhibitions.



Gallery 1

Displays tell the story of Newry and Mourne from the prehistoric period up to the 16th century. Artefacts on display include a grave slab from a pre-Norman monastic foundation in the area and a stone carved with a human head and a heraldic animal from the medieval Cistercian abbey at Newry.

Highlights include a range of artefacts including pottery from the Neolithic to post medieval period, excavated in 2011 at Carnbane, near Newry.



Gallery 2

The commercial and cultural heritage of Newry and Mourne in the 17th, 18th and 19th centuries is explored.

This gallery includes a late 16th century portrait of Sir Nicholas Bagenal, who developed the Newry and Mourne area in the second half of the 16th century. As Marshal of the Army in Ireland, he also played an important role in the political events of the period.



Gallery 3

An eclectic range of artefacts is used to trace the impact of political, economic and cultural events on Newry in the 20th century. A section of the gallery is also devoted to the farming, fishing and domestic life of the area.

Highlights include paintings by Newry-born artist, Margaret Clarke, one of the most significant figures in the history of early 20th century Irish art. An accomplished portrait painter, Margaret also ran her husband, Harry Clarke's stain glass studios in Dublin after his death in 1931.

Temporary Exhibition Programme

An Excursion into the History of the Newry and Warrenpoint Railway



Opened in May 1849 and originally known as the Newry, Warrenpoint and Rostrevor Railway, the rail link between Newry and Warrenpoint operated for around 150 years. During those years it was instrumental in the growth and development of Warrenpoint and Rostrevor as popular tourist destinations for holiday makers and day trippers alike. Many local people also found the line to be a convenient mode of transport for commuting between Newry and Warrenpoint.

This exhibition charts the history of the railway line and memories will be stimulated for many people by the range of objects, documents and photographs on display. Many of these were collected around the time of the closure of the line in 1965 by two brothers, Andrew and Barrie Domleo, who, as teenagers, regularly visited from England their grandparents in Warrenpoint. The Domleo brothers have generously donated this fascinating material to Newry and Mourne Museum and this is the first time these artefacts have been seen by the local community in over fifty years.

Date:
On display
until 31 August
2019

Venue:
Newry and
Mourne
Museum



War Declared: The Local Impact of World War II

The United Kingdom declared war on Germany on 3 September 1939 and this major exhibition marks the eightieth anniversary of the outbreak of World War II by looking at the impact of the conflict on Newry and Mourne. Key themes in the exhibition will include preparations for war in the area during the late 1930s, Civil Defence, local recruitment in the armed forces, evacuees, rationing and smuggling, regiments stationed in the area and the arrival of American troops and airmen in 1942.

The exhibition will also consider the effect of the war on the local economy, especially in the context of a Border community, and the legacy of war in the area in the later 1940s and early 1950s.

These themes will also be explored through the memories of local people which highlight the impact of World War II on individuals, families and communities. Many such stories are often undocumented elsewhere.

Date:
Opens
24 May 2019

Venue:
Newry and
Mourne Museum

Costume Case Displays

A Wartime Wedding Dress



Every six months Newry and Mourne Museum changes its costume display to display items from its costume collection.

A wedding dress dating from c.1941 was recently donated to Newry and Mourne Museum which had been worn by three sisters at their weddings in the 1940s. The sisters were daughters of John Edgar Bailey from Moybrick, near Dromara, who served as MP for West Down in the Northern Ireland Government from 1938 until his death in 1958. He was also Parliamentary Secretary at the Ministry of Agriculture (1956 – 1958) and Assistant Parliamentary Secretary at the Ministry of Finance (1945 – 1958).

Made by Ethel Beck, a dressmaker in Dromara, the dress was first worn by Evelyn Bailey at her wedding in 1941 and then by her sisters, Rebecca and Molly, in 1945 and 1947 respectively.

Date:

On display from 11 March 2019

Venue:

Newry and Mourne Museum

Events

'Comfort Bowls' Pebble Art Workshop



Join guest artist Angela Gillen for a class designed for adults to make their own 'comfort bowls' using painted pebbles to create a work of art with inspirational messages.

Numbers are limited to 10 people and pre booking of places is advisable. Suitable for ages 16 plus.

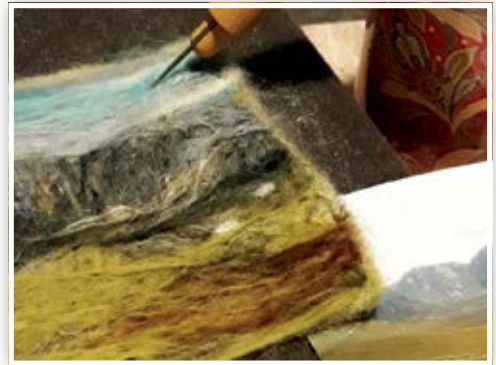
Date
Saturday 18 May

Time
1pm – 3pm

Venue
Newry and Mourne Museum

Admission:
£5 per person

Felting Art Workshop



Join guest artist Jennifer Cunningham for a class designed for adults. During the workshop participants will use a felting needle and wool fibres to create a felted scene which they will take away in a frame.

All materials are provided. Numbers are limited to 10 people and pre booking of places is advisable. Suitable for ages 16 plus.

Date
Saturday 15 June

Time
1pm – 4pm

Venue
Newry and Mourne Museum

Admission:
£5 per person

Events

Exciting new project for young people! *Reimagine, Remake and Replay - Call for participants*



Newry and Mourne Museum is one of five local museum partners involved in the Heritage Lottery Funded funded Reimagine, Remake, Replay project.

This three year project is aimed at connecting young people (16-25 years) with museums and heritage in meaningful ways through creative media and the latest digital technologies and will be delivered by a consortium of partners including the Nerve Centre, Northern Ireland Museums Council, National Museums Northern Ireland and Northern Ireland Screen.

A five week creative photography course will run each Friday night from 5pm – 7pm and starts on the 7th June and ends on 5th July.

Get hands-on with the latest camera technologies and editing softwares, at this FREE 5-week photography course for 16-25 year olds at Newry and Mourne Museum.

Using the museum's unique collections as inspiration, learn about modern day photographic techniques in response.

*No experience required

*Spaces are limited

Venue

Newry and Mourne
Museum

**To book or for more
information ring Clodagh
at 02890550215**

Summer workshop: 'Make in the Museum'



Aimed at children, these sessions will be an exciting, creative exploration of the Museum's unique artefacts through a variety of different mediums. Wear old clothes.

Date
29 July – 2 August

Time
10.30am – 1pm

Venue
Newry and Mourne
Museum

Admission:
£2.50 per child,
per day

Reminiscence Loan Box Service



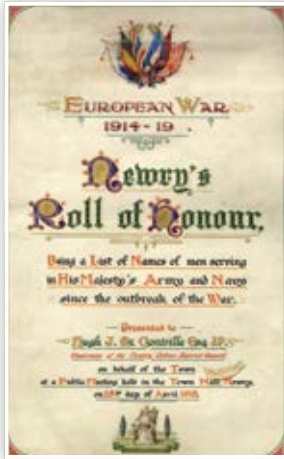
This service is free and the boxes can be borrowed for a two week period. Museum staff can provide brief instruction on how the boxes can be used. Themes include:

- The 1940s and 1950s
- School Life
- Household
- Earning a Crust
- Rural Life
- Grooming and Fashion
- The 1970s and 1980s
- Christmas

To reserve a box, call: **028 3031 3178**

Touring Exhibition Programme

Admission to travelling exhibitions is free of charge



Travelling exhibitions are available free of charge from the Museum. The current exhibitions available, which each comprise five pop-up stands, are:

Newry and Mourne in the Great War

Tells the local story of the impact of the First World War, with references to Bessbrook, Jerretspass, Kilkeel, Newry, Newtownhamilton, Rostrevor and Warrenpoint.

The Great Famine

Provides an overview of how the famine affected the local area, with reference to Newry, Forkhill, Warrenpoint, Downpatrick and Crossgar.

1916 and After

Themes explored include local figures associated with the Easter Rising of 1916, how it was reported in local newspapers and its impact on local politics.

Farming in the Local Area

Explores the development of farming, with aspects such as agricultural shows and farming co-operatives in Newry, Loughbrickland, Rathfriland and south Armagh.

To check availability and to book a travelling exhibition or reminiscence box call: 028 3031 3178 or 028 3031 3182

Opening Hours:

The Museum is open:

Monday to Saturday: 10am–4.30pm

Sundays: 1.30pm–5pm

Admission:

Admission to the Museum is **free of charge**.

There is a charge for some workshops, lectures, special events and guided tours.

Accessibility:

The Museum is fully accessible.

Education Services

The Museum provides a wide range of workshops based on the history of the Newry and Mourne area. Events and activities usually cost £1 per child. Workshops can be arranged according to your school timetable, please email us at

declan.carroll@nmandd.org

Family Events and Lecture Programme

A varied programme of events, courses, activities and lectures are available.

To find out what is scheduled this spring and summer and to join our mailing list contact us by phone or email. Events are posted on Facebook.

Contact:

Newry and Mourne Museum
Bagenal's Castle, Castle Street


Newry, Co. Down BT34 2BY

Weekdays: 028 3031 3175 or 028 3031 3178

Weekends: 07554 772523

museum@nmandd.org

www.bagenalscastle.com

 [newryandmournemuseum](https://www.facebook.com/newryandmournemuseum)

 [@nandmmuseum](https://twitter.com/nandmmuseum)

Room Hire



There are two rooms available for events and activities that complement the Museum's ethos e.g. lectures, workshops, seminars, community events and meetings.

On the second floor of the 16th century Bagenal's Castle there is a Banqueting Room, with original features. On the ground floor of the Warehouse, with the former McCann's Bakery shop frontage, there is a Meeting Room

To check availability, conditions of hire, price and to book a room please contact Museum Reception at 028 3031 3175.



Research Resources

The Museum contains significant archival collections, including the Reside Collection and the Hugh Irvine Collection, which are important sources for anyone researching social and family history in the area. The Museum also has an important Nationalist political collection, relating to Eamon Donnelly. To view a document in our Reading Room please contact us by email or phone.