



Comhairle Ceantair  
**an Iúir, Mhúrn  
agus an Dúin**  
**Newry, Mourne  
and Down**  
District Council

November 29th, 2016

**Notice Of Meeting**

You are requested to attend the Council meeting to be held on **Monday, 28th November 2016** at **6:00 pm** in **Mourne Room, Downshire Civic Centre, Downpatrick.**

# Agenda

## Apologies and Chairperson's Remarks

## Declarations of Interest

### NI Water

The following officials will be in attendance:

Ronan Larkin, Director of Finance and Regulation

Dymphna Gallagher – Head of Safety and Asset Management

Angela Halpenny – Head of Environmental Compliance

Lisa Hughes – Senior Project Sponsor

Keith Henderson – Wastewater Assets Area Manager

***Newry Mourne and Down District Council November 2016.pdf***

**Page 1**

# Invitees

Cllr Terry Andrews	<a href="mailto:terry.andrews@downdc.gov.uk">terry.andrews@downdc.gov.uk</a>
Cllr Naomi Bailie	<a href="mailto:naomi.bailie@nmandd.org">naomi.bailie@nmandd.org</a>
Cllr Patrick Brown	<a href="mailto:patrick.brown@nmandd.org">patrick.brown@nmandd.org</a>
Cllr Robert Burgess	<a href="mailto:robert.burgess@nmandd.org">robert.burgess@nmandd.org</a>
Cllr Stephen Burns	<a href="mailto:stephen.burns@downdc.gov.uk">stephen.burns@downdc.gov.uk</a>
Cllr Pete Byrne	<a href="mailto:pete.byrne@nmandd.org">pete.byrne@nmandd.org</a>
Mr Gerard Byrne	<a href="mailto:gerard.byrne@nmandd.org">gerard.byrne@nmandd.org</a>
Cllr Michael Carr	<a href="mailto:michael.carr@newryandmourne.gov.uk">michael.carr@newryandmourne.gov.uk</a>
Mrs Dorinnia Carville	<a href="mailto:dorinnia.carville@nmandd.org">dorinnia.carville@nmandd.org</a>
Cllr charlie casey	<a href="mailto:charlie.casey@newryandmourne.gov.uk">charlie.casey@newryandmourne.gov.uk</a>
Cllr William Clarke	<a href="mailto:william.clarke@downdc.gov.uk">william.clarke@downdc.gov.uk</a>
Cllr Garth Craig	<a href="mailto:garth.craig@downdc.gov.uk">garth.craig@downdc.gov.uk</a>
Cllr Dermot Curran	<a href="mailto:dermot.curran@downdc.gov.uk">dermot.curran@downdc.gov.uk</a>
Mr Eddy Curtis	<a href="mailto:eddy.curtis@newryandmourne.gov.uk">eddy.curtis@newryandmourne.gov.uk</a>
Cllr Laura Devlin	<a href="mailto:laura.devlin@downdc.gov.uk">laura.devlin@downdc.gov.uk</a>
Ms Louise Dillon	<a href="mailto:louise.dillon@newryandmourne.gov.uk">louise.dillon@newryandmourne.gov.uk</a>
Cllr Sean Doran	<a href="mailto:sean.doran@newryandmourne.gov.uk">sean.doran@newryandmourne.gov.uk</a>
Cllr Sinead Ennis	<a href="mailto:sinead.ennis@nmandd.org">sinead.ennis@nmandd.org</a>
Cllr Cadogan Enright	<a href="mailto:cadogan.enright@downdc.gov.uk">cadogan.enright@downdc.gov.uk</a>
Cllr Gillian Fitzpatrick	<a href="mailto:gillian.fitzpatrick@newryandmourne.gov.uk">gillian.fitzpatrick@newryandmourne.gov.uk</a>
Mr Patrick Green	<a href="mailto:patrick.green@downdc.gov.uk">patrick.green@downdc.gov.uk</a>
Cllr Glyn Hanna	<a href="mailto:glyn.hanna@nmandd.org">glyn.hanna@nmandd.org</a>
Mr Liam Hannaway	<a href="mailto:liam.hannaway@nmandd.org">liam.hannaway@nmandd.org</a>
Cllr Valerie Harte	<a href="mailto:valerie.harte@newryandmourne.gov.uk">valerie.harte@newryandmourne.gov.uk</a>
Cllr Harry Harvey	<a href="mailto:harry.harvey@newryandmourne.gov.uk">harry.harvey@newryandmourne.gov.uk</a>
Cllr Terry Hearty	<a href="mailto:terry.hearty@newryandmourne.gov.uk">terry.hearty@newryandmourne.gov.uk</a>
Cllr David Hyland	<a href="mailto:david.hyland@newryandmourne.gov.uk">david.hyland@newryandmourne.gov.uk</a>
Cllr Liz Kimmins	<a href="mailto:liz.kimmins@nmandd.org">liz.kimmins@nmandd.org</a>
Cllr Mickey Larkin	<a href="mailto:micky.larkin@nmandd.org">micky.larkin@nmandd.org</a>
Mr Michael Lipsett	<a href="mailto:michael.lipsett@downdc.gov.uk">michael.lipsett@downdc.gov.uk</a>
Cllr Kate Loughran	<a href="mailto:kate.loughran@newryandmourne.gov.uk">kate.loughran@newryandmourne.gov.uk</a>
Cllr Jill Macauley	<a href="mailto:jill.macauley@nmandd.org">jill.macauley@nmandd.org</a>
Cllr Kevin Mc Ateer	<a href="mailto:kevin.mcateer@nmandd.org">kevin.mcateer@nmandd.org</a>
Mr Johnny Mc Bride	<a href="mailto:johnny.mcbride@newryandmourne.gov.uk">johnny.mcbride@newryandmourne.gov.uk</a>
Colette McAteer	<a href="mailto:collette.mcateer@newryandmourne.gov.uk">collette.mcateer@newryandmourne.gov.uk</a>
Cllr Declan McAteer	<a href="mailto:declan.mcateer@newryandmourne.gov.uk">declan.mcateer@newryandmourne.gov.uk</a>
Cllr Andrew McMurray	<a href="mailto:andrew.mcmurray@nmandd.org">andrew.mcmurray@nmandd.org</a>
Eileen McParland	<a href="mailto:eileen.mcparland@newryandmourne.gov.uk">eileen.mcparland@newryandmourne.gov.uk</a>
Cllr Roisin Mulgrew	<a href="mailto:roisin.mulgrew@nmandd.org">roisin.mulgrew@nmandd.org</a>
Cllr Mark Murnin	<a href="mailto:mark.murnin@nmandd.org">mark.murnin@nmandd.org</a>
Mrs Aisling Murray	<a href="mailto:aisling.murray@newryandmourne.gov.uk">aisling.murray@newryandmourne.gov.uk</a>

Cllr Barra O Muiri	<a href="mailto:barra.omuiri@nmandd.org">barra.omuiri@nmandd.org</a>
Cllr Pol O'Gribin	<a href="mailto:pol.ogribin@nmandd.org">pol.ogribin@nmandd.org</a>
Mr Canice O'Rourke	<a href="mailto:canice.orourke@downdc.gov.uk">canice.orourke@downdc.gov.uk</a>
Ms Patricia Oakes	<a href="mailto:patricia.oakes@downdc.gov.uk">patricia.oakes@downdc.gov.uk</a>
Cllr Brian Quinn	<a href="mailto:brian.quinn@newryandmourne.gov.uk">brian.quinn@newryandmourne.gov.uk</a>
Cllr Henry Reilly	<a href="mailto:henry.reilly@newryandmourne.gov.uk">henry.reilly@newryandmourne.gov.uk</a>
Cllr Michael Ruane	<a href="mailto:michael.ruane@newryandmourne.gov.uk">michael.ruane@newryandmourne.gov.uk</a>
Democratic Services	<a href="mailto:democratic.services@nmandd.org">democratic.services@nmandd.org</a>
Cllr Gareth Sharvin	<a href="mailto:gareth.sharvin@downdc.gov.uk">gareth.sharvin@downdc.gov.uk</a>
Cllr Gary Stokes	<a href="mailto:gary.stokes@nmandd.org">gary.stokes@nmandd.org</a>
Sarah Taggart	<a href="mailto:sarah-louise.taggart@downdc.gov.uk">sarah-louise.taggart@downdc.gov.uk</a>
Cllr David Taylor	<a href="mailto:david.taylor@newryandmourne.gov.uk">david.taylor@newryandmourne.gov.uk</a>
Caroline Taylor	<a href="mailto:Caroline.Taylor@downdc.gov.uk">Caroline.Taylor@downdc.gov.uk</a>
Cllr Jarlath Tinnelly	<a href="mailto:jarlath.tinnelly@nmandd.org">jarlath.tinnelly@nmandd.org</a>
Cllr John Trainor	<a href="mailto:john.trainor@nmandd.org">john.trainor@nmandd.org</a>
Cllr William Walker	<a href="mailto:william.walker@nmandd.org">william.walker@nmandd.org</a>
Mrs Marie Ward	<a href="mailto:marie.ward@downdc.gov.uk">marie.ward@downdc.gov.uk</a>



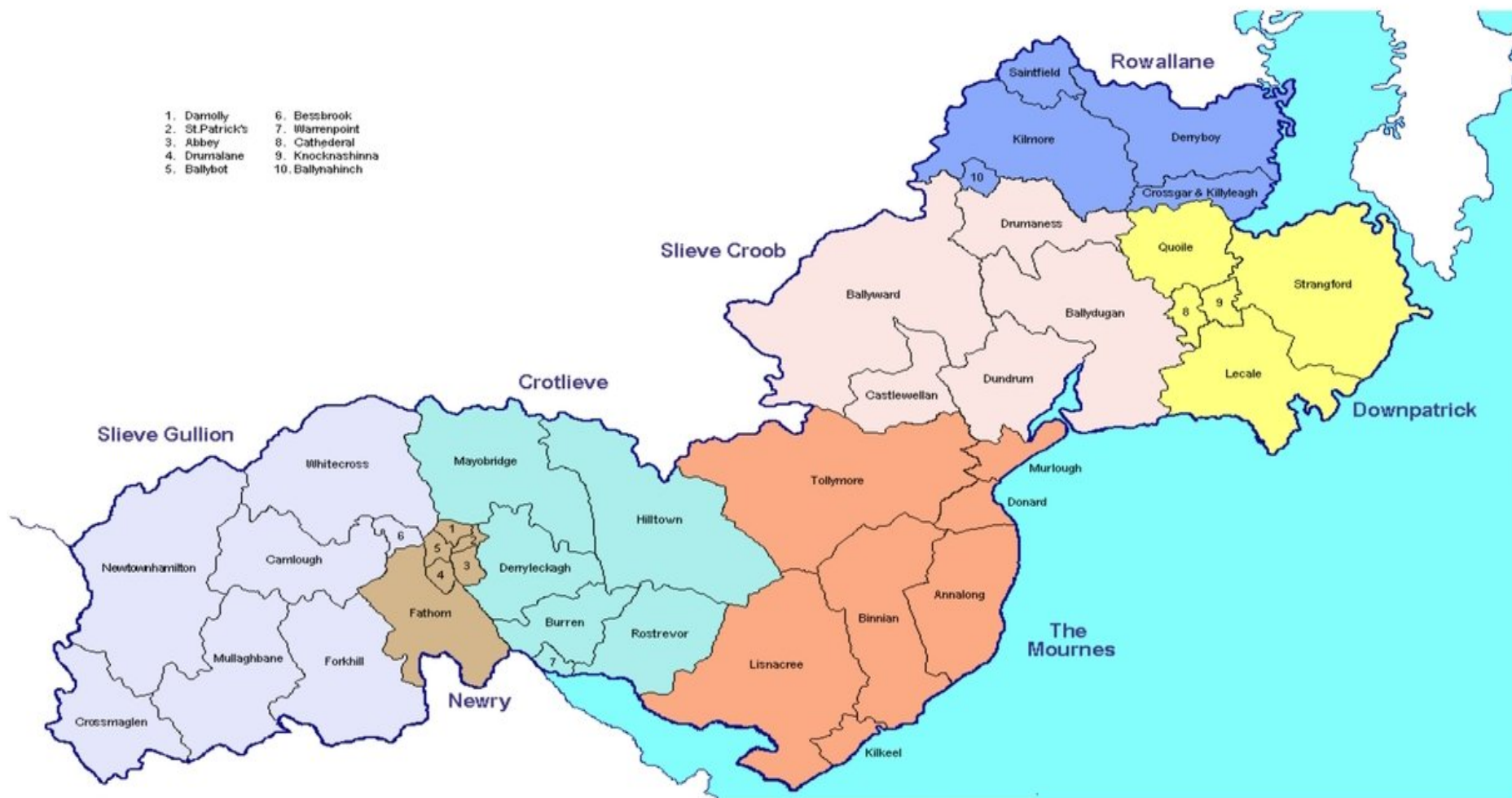
## **Presentation to Newry, Mourne and Down District Council**

**Ronan Larkin – Director of Finance and Regulation**  
**Dymphna Gallagher – Head of Safety and Asset Management**  
**Angela Halpenny – Head of Environmental Regulation**  
**Lisa Hughes – Senior Project Sponsor**  
**Keith Henderson – Wastewater Assets Area Manager**

**Date: 28 November 2016**

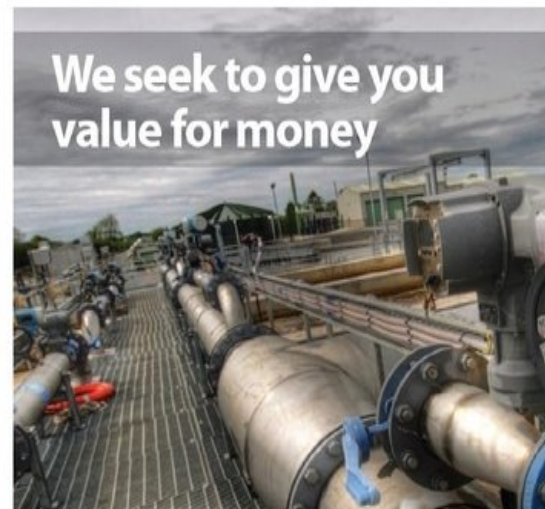
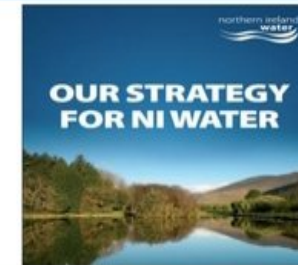
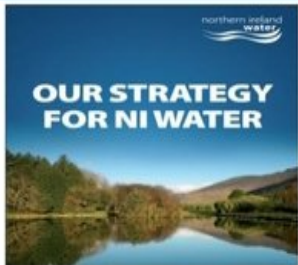


# Newry, Mourne and Down District Council





# Our 8 Customer Promises



# Capital Investments

	Capital Project Spend	
Investment Year	NIW	N,M&D
PC13	£227.9m	£36.4m
2015/16	£95m	£18.6m
2016/17	£101.6m	£13.5m
<b>Total</b>	<b>£424.5m</b>	<b>£68.5m</b>

Newry, Mourne and Down District Council benefits from 16.13% of all NI Water's capital spend. This compares favourably with the District's 9.53% share of Northern Ireland's population.



# Top Investments

## In Construction / Recently Complete Projects:

Newcastle WwTW

Camlough Impounding Reservoir Dam Survey. (Condition Assessment)

PC15 Watermains Rehabilitation WP1 - Foffany/North Lisburn South

Grange Road Kilkeel Out of Sewer Flooding Feasibility Study

Camly Command SR Refurbishment

Ballydugan to Newry Main Link Reinforcement

Kilmore & Annacloy WwTW

## Projects about to start:

Newpoint WWPS Screen upgrade

Newry Depot Premises upgrade

WIIM 1 Phase 2 Carran Hill Crossmaglen WP

Newry West SR Rehabilitation

Sewer Structural Rehabilitation Package 4

Dundrum WwTW

Carlingford Lough Sustainable Water Quality Improvement Project (CL SWQIP)

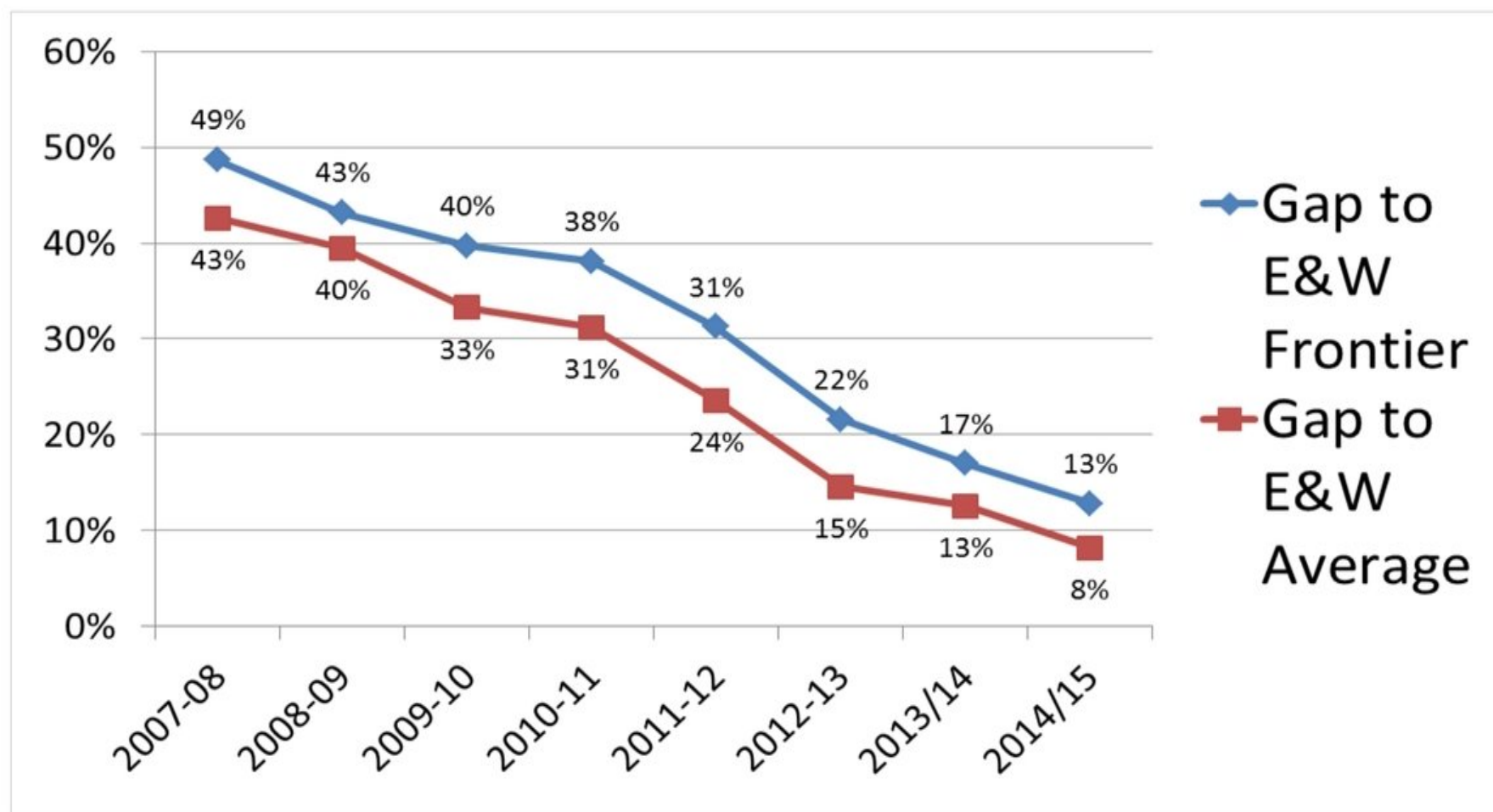
Silent Valley Recreational Facilities Appraisal

Drumsesk Wastewater Header Tank

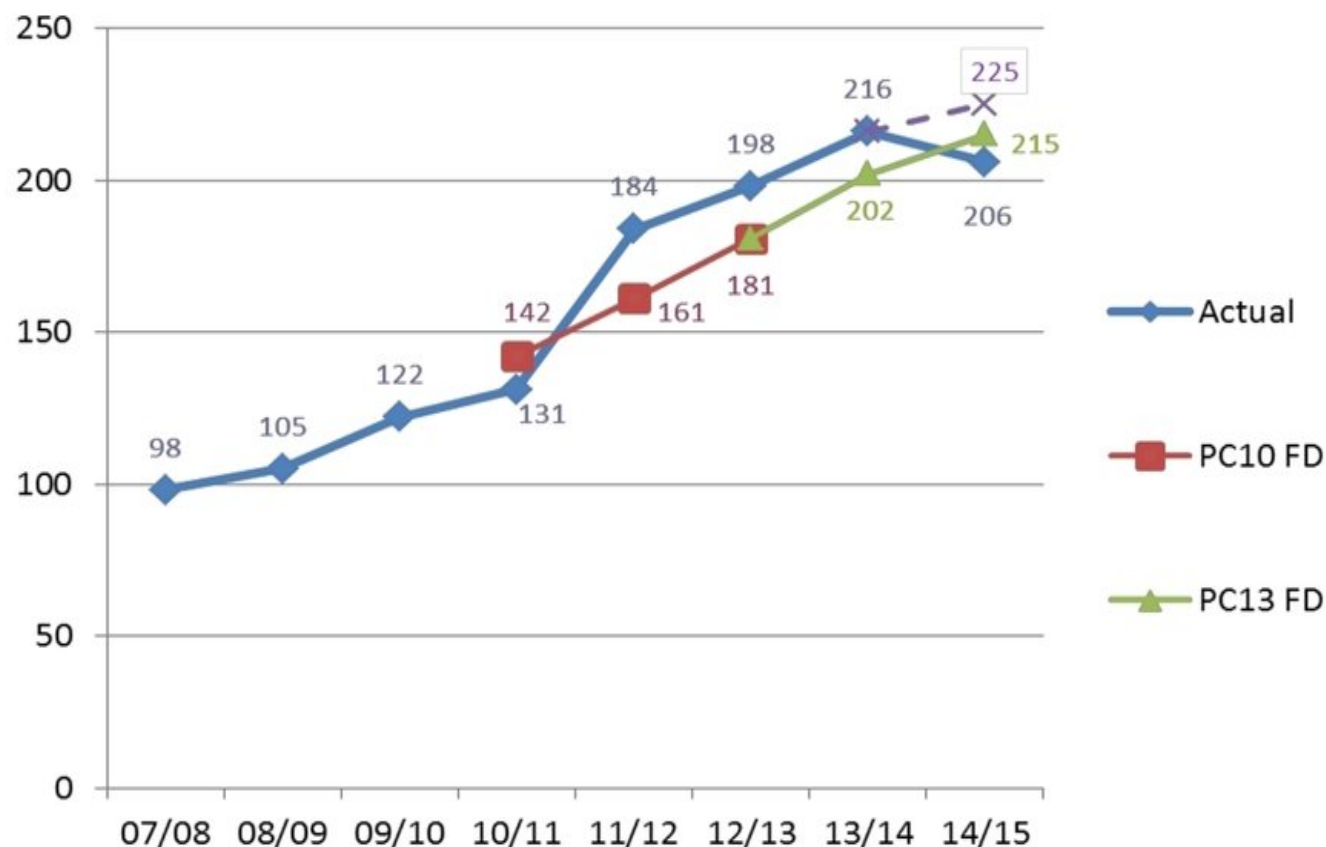
Drumaroad WTW Clear Water Tank

Drumalane Rd, Newry Storm and Foul Sewers.

# Closing the Efficiency Gap



# Service Improvement (OPA)



- OPA basket of measures**
- Risk of low pressure
  - Unplanned interruptions
  - Hosepipe restrictions
  - Customer contact
  - Drinking water quality
  - Sewage sludge disposal
  - Leakage
  - Water pollution incidents
  - Sewerage pollution incidents
  - Wastewater treatment works compliance

Overall Performance Assessment (OPA) is a composite measure of a range of targets the Utility Regulator uses to monitor the level of service NI Water provides to its customers.

# Annsborough

- NI Water reacted immediately to reports of a pollution incident at the Ballybannon River in Annsborough at 6:35pm on Saturday 8 October.
- Root cause was an accidental discharge of polyelectrolyte sludge thickener as a result of a fractured pipe connection and inadequate bunding.
- Repair and clean-up immediately undertaken; ongoing liaison with NIEA and Inland Fisheries Agency, alongside local anglers re: recovery of the river.
- The fractured pipe has been replaced and new bunding protection has been provided.
- We will maintain proactive liaison with local anglers and Inland Fisheries.
- At other wastewater facilities, we will check polyelectrolyte dosing pipe arrangements and replace fittings as appropriate. Bunding provision will also be checked and replaced as required.



# Look Ahead

- NI Water operates an Environmental Management System (EMS), externally accredited to ISO14001, used to minimise the risk of chemical discharge.
- NI Water manages and maintains 1,000+ wastewater treatment works, as well as 1,200+ pumping stations and 15,000km of sewers.
- The company also collects and treats approx. 1.3 billion litres of wastewater every year, returning it safely to the environment into over 2,500 waterways.
- NI Water treats every pollution incident with the utmost seriousness and deeply regrets the distress they cause to local communities.
- It is impossible to guarantee zero discharges across the entirety of the estate, and NI Water works closely with NIAUR and NIEA to monitor such discharges.
- NI Water will continue to play a full role with local stakeholders and statutory agencies to mitigate and address the short and long term effects of any discharge.



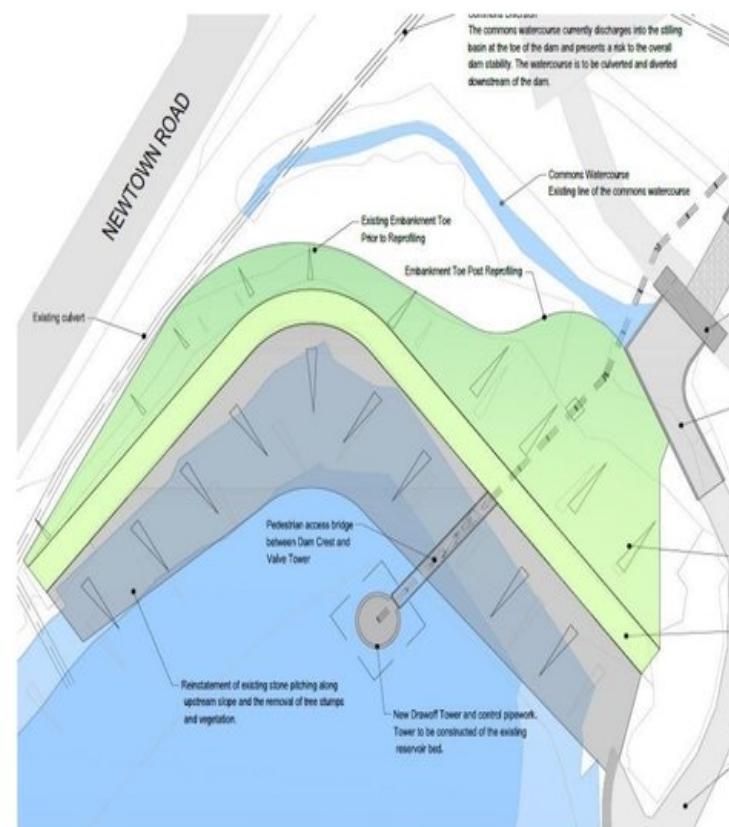
# Camlough Lake

- Construction commenced May 2016
- Valve Tower June 2016 – January 2017
- Main concrete works - 90% Complete
- Access Bridge November 2016 – January 2017
- Repair of Scour Pipes Complete
- Downstream Works - 85% Complete
- Sheet Piling - 90% Complete
- Embankment Works – 95% Complete
- Wave Wall December 2016 – February 2017
- Miscellaneous Works February 2017- April 2017
- Contractor currently has a 6 week risk allowance



# Camlough Lake Overview

- Overview of Construction Works.
- Sheet piled dam core to reduce seepage and improve stability.
- Upstream wave wall to prevent overtopping.
- New valve tower and access bridge to replace the collapsed structure.
- Relining of draw-off pipework through the dam.
- Raising of the dam crest and profiling of the downstream slope.
- Repairs to the upstream slope.
- Diversions to the commons watercourse.
- New downstream stilling basin, and access bridge.





# Education Activity

- 12 primary schools within the Council area were visited by the Waterbus in 2015/16 – 800 local pupils in total.



# Current Public Initiatives

				
<p>Smartphone App Leak Reporting</p>	<p>Water Bus Use Water Wisely</p>	<p>FOG - Fats Oils and Grease</p>	<p>Bag it &amp; Bin it Campaign</p>	<p>Winter Freeze Campaign – Pipe Protection</p>



# 'Don't Wait Insulate'

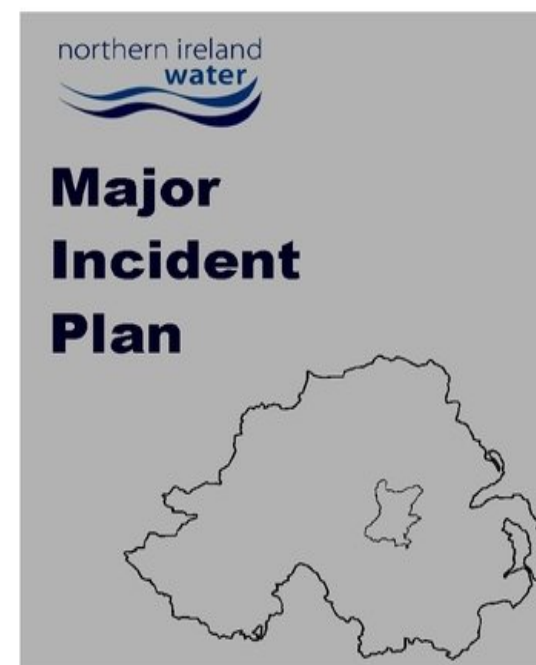
- Winter Campaign launched 14 November
- Running via print, broadcast and online media.
- Key message – 'Don't Wait Insulate' – take preventative action to protect your property from potential severe weather while you can.
- Full support from Minister for Infrastructure and elected representatives at all levels.





# Preparations

- **NI Water Major Incident Plan**
  - Tried and tested.
  - Compiled by specialists in light of best practice.
  - Based on principles of Integrated Emergency Management.
  - Incorporates lessons learned from Water Industry experience.
  - Annual audit by independent Certifier.
- **NI Water Winter Contingency Planning**
  - Winter plan in place
  - Pre-emptive measures taken in advance of the winter period.
  - Ongoing training and Mock Incident Exercise (October 2016)
  - Regular Met Office Severe weather warnings and advice.
- **Civil Contingency planning and liaison.**
  - Strategic co-ordination with inter-agency groups.
  - Mutual aid arrangements.



# How To Reach Us

- **Dedicated 24/7 Elected Representative Hotline:** 0345 3006461
- **Email :** [waterline@niwater.com](mailto:waterline@niwater.com)
- **Website:** [www.niwater.com](http://www.niwater.com)
- **Twitter:** @niwnews
- **Facebook:** [www.facebook.com/niwater](http://www.facebook.com/niwater)
- **24/7 Waterline for public:** 03457 440088.

# Any Questions?