



August 20th, 2015

**Notice Of Meeting**

You are invited to attend the Special Meeting of Newry, Mourne and Down District Council to be held on **Wednesday, 26th August 2015 at 6:00 pm** in **The Mourne Room Downshire Civic Centre Downpatrick.**

# Agenda

**1 Apologies**

**2 Presentation from Representatives of Transport NI - Spring Report 2015 (Copy Circulated)**

Please note: Clinics will be held (in the Mourne Room) for Councillors from each of the DEAs in the prior to the meeting as follows:

3.30pm - 4.00pm  
Downpatrick DEA  
Rowallane DEA

4.00pm - 4.45pm  
Crotlieve DEA  
Slieve Croob DEA  
Mournes DEA

4.45pm - 5.15pm  
Newry Town DEA  
Slieve Gullion DEA

***Transport NI Spring Report 2015.pdf***

Page 1

**3 Southern Relief Road - Update**

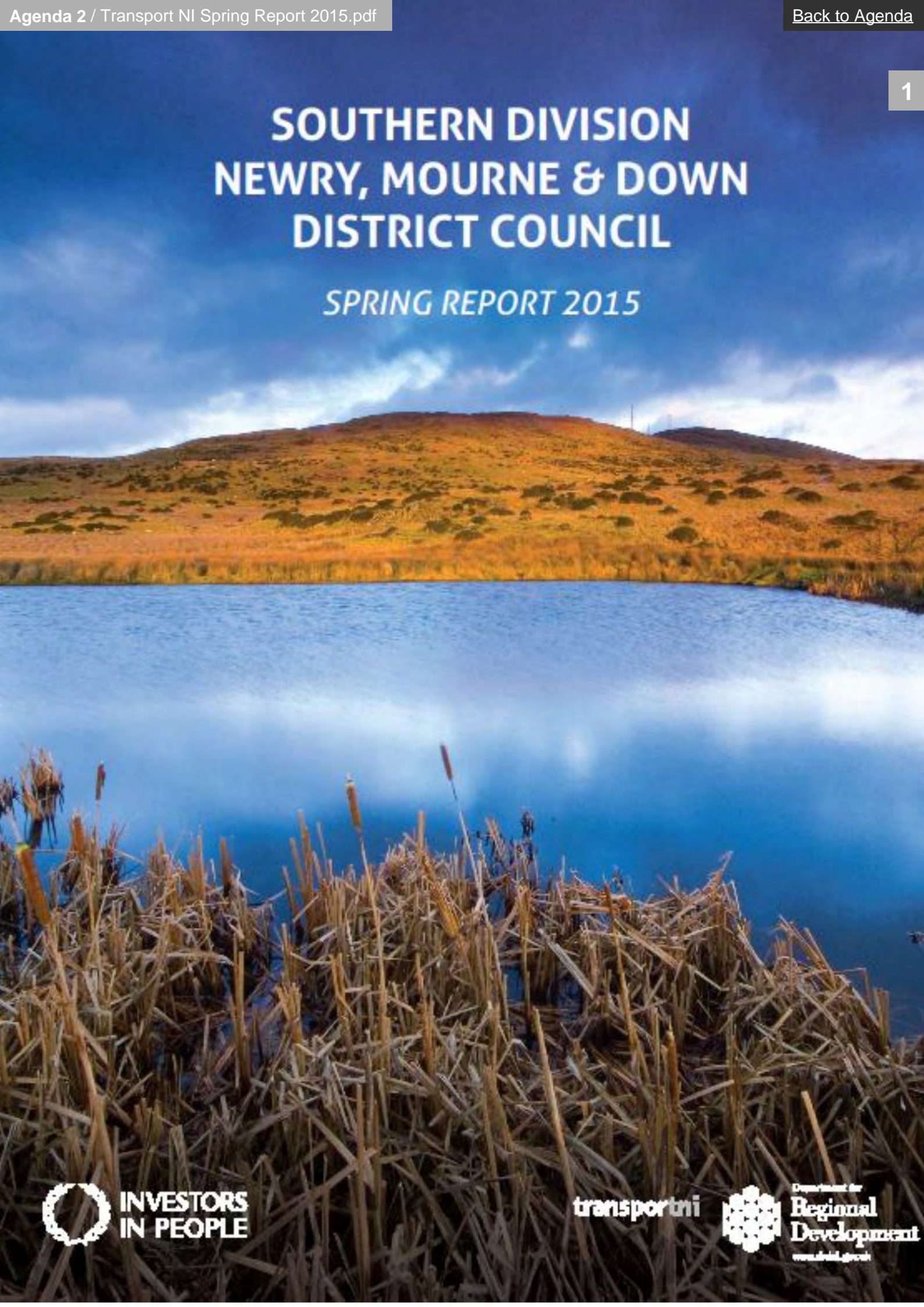
# Invitees

Cllr. Terry Andrews	<a href="mailto:terry.andrews@downdc.gov.uk">terry.andrews@downdc.gov.uk</a>
Cllr. Naomi Bailie	<a href="mailto:naomi.bailie@nmandd.org">naomi.bailie@nmandd.org</a>
Cllr. Patrick Brown	<a href="mailto:patrick.brown@nmandd.org">patrick.brown@nmandd.org</a>
Cllr. Robert Burgess	<a href="mailto:robert.burgess@downdc.gov.uk">robert.burgess@downdc.gov.uk</a>
Cllr. Stephen Burns	<a href="mailto:stephen.burns@downdc.gov.uk">stephen.burns@downdc.gov.uk</a>
Cllr. Michael Carr	<a href="mailto:michael.carr@newryandmourne.gov.uk">michael.carr@newryandmourne.gov.uk</a>
Cllr. charlie casey	<a href="mailto:charlie.casey@newryandmourne.gov.uk">charlie.casey@newryandmourne.gov.uk</a>
Cllr. Patrick Clarke	<a href="mailto:patrick.clarke@downdc.gov.uk">patrick.clarke@downdc.gov.uk</a>
Cllr. Garth Craig	<a href="mailto:garth.craig@downdc.gov.uk">garth.craig@downdc.gov.uk</a>
Cllr. Dermot Curran	<a href="mailto:dermot.curran@downdc.gov.uk">dermot.curran@downdc.gov.uk</a>
Mr. Eddie Curtis	<a href="mailto:eddie.curtis@newryandmourne.gov.uk">eddie.curtis@newryandmourne.gov.uk</a>
Cllr. Laura Devlin	<a href="mailto:laura.devlin@downdc.gov.uk">laura.devlin@downdc.gov.uk</a>
Ms. Louise Dillon	<a href="mailto:louise.dillon@newryandmourne.gov.uk">louise.dillon@newryandmourne.gov.uk</a>
Cllr. Geraldine Donnelly	<a href="mailto:geraldine.donnelly@newryandmourne.gov.uk">geraldine.donnelly@newryandmourne.gov.uk</a>
Cllr. Sean Doran	<a href="mailto:sean.doran@newryandmourne.gov.uk">sean.doran@newryandmourne.gov.uk</a>
Cllr. Sinead Ennis	<a href="mailto:sinead.ennis@nmandd.org">sinead.ennis@nmandd.org</a>
Cllr. Cadogan Enright	<a href="mailto:cadogan.enright@downdc.gov.uk">cadogan.enright@downdc.gov.uk</a>
Cllr. Gillian Fitzpatrick	<a href="mailto:gillian.fitzpatrick@newryandmourne.gov.uk">gillian.fitzpatrick@newryandmourne.gov.uk</a>
Mr. Patrick Green	<a href="mailto:patrick.green@downdc.gov.uk">patrick.green@downdc.gov.uk</a>
Cllr. Glyn Hanna	<a href="mailto:glyn.hanna@nmandd.org">glyn.hanna@nmandd.org</a>
Mr. Liam Hannaway	<a href="mailto:liam.hannaway@nmandd.org">liam.hannaway@nmandd.org</a>
Cllr. Valerie Harte	<a href="mailto:valerie.harte@newryandmourne.gov.uk">valerie.harte@newryandmourne.gov.uk</a>
Cllr. Harry Harvey	<a href="mailto:harry.harvey@newryandmourne.gov.uk">harry.harvey@newryandmourne.gov.uk</a>
Cllr. Terry Hearty	<a href="mailto:terry.hearty@newryandmourne.gov.uk">terry.hearty@newryandmourne.gov.uk</a>
Cllr. David Hyland	<a href="mailto:david.hyland@newryandmourne.gov.uk">david.hyland@newryandmourne.gov.uk</a>
Cllr. Liz Kimmins	<a href="mailto:liz.kimmins@nmandd.org">liz.kimmins@nmandd.org</a>
Cllr. Mickey Larkin	<a href="mailto:micky.larkin@nmandd.org">micky.larkin@nmandd.org</a>
Mr. Michael Lipsett	<a href="mailto:michael.lipsett@downdc.gov.uk">michael.lipsett@downdc.gov.uk</a>
Cllr. Kate Loughran	<a href="mailto:kate.loughran@newryandmourne.gov.uk">kate.loughran@newryandmourne.gov.uk</a>
Cllr. Kevin Mc Ateer	<a href="mailto:kevin.mcateer@nmandd.org">kevin.mcateer@nmandd.org</a>
Cllr. Colin Mc Grath	<a href="mailto:colin.mcgrath@downdc.gov.uk">colin.mcgrath@downdc.gov.uk</a>
Collette McAteer	<a href="mailto:collette.mcateer@newryandmourne.gov.uk">collette.mcateer@newryandmourne.gov.uk</a>
Cllr. Declan McAteer	<a href="mailto:declan.mcateer@newryandmourne.gov.uk">declan.mcateer@newryandmourne.gov.uk</a>
Cllr. Harold McKee	<a href="mailto:harold.mckee@newryandmourne.gov.uk">harold.mckee@newryandmourne.gov.uk</a>
Eileen McParland	<a href="mailto:eileen.mcparland@newryandmourne.gov.uk">eileen.mcparland@newryandmourne.gov.uk</a>
Cllr. Roisin Mulgrew	<a href="mailto:roisin.mulgrew@nmandd.org">roisin.mulgrew@nmandd.org</a>
Cllr. Mark Murnin	<a href="mailto:mark.murnin@nmandd.org">mark.murnin@nmandd.org</a>
Cllr. Barra O Muiri	<a href="mailto:barra.omuiri@nmandd.org">barra.omuiri@nmandd.org</a>
Cllr. Pol O'Gribin	<a href="mailto:pol.ogribin@nmandd.org">pol.ogribin@nmandd.org</a>
Mr. Canice O'Rourke	<a href="mailto:canice.orourke@downdc.gov.uk">canice.orourke@downdc.gov.uk</a>
Cllr. Brian Quinn	<a href="mailto:brian.quinn@newryandmourne.gov.uk">brian.quinn@newryandmourne.gov.uk</a>

Cllr. Henry Reilly	<a href="mailto:henry.reilly@newryandmourne.gov.uk">henry.reilly@newryandmourne.gov.uk</a>
Cllr. Michael Ruane	<a href="mailto:michael.ruane@newryandmourne.gov.uk">michael.ruane@newryandmourne.gov.uk</a>
Cllr. Gareth Sharvin	<a href="mailto:gareth.sharvin@downdc.gov.uk">gareth.sharvin@downdc.gov.uk</a>
Cllr. Gary Stokes	<a href="mailto:gary.stokes@nmandd.org">gary.stokes@nmandd.org</a>
Sarah Taggart	<a href="mailto:sarah-louise.taggart@downdc.gov.uk">sarah-louise.taggart@downdc.gov.uk</a>
Cllr. David Taylor	<a href="mailto:david.taylor@newryandmourne.gov.uk">david.taylor@newryandmourne.gov.uk</a>
Caroline Taylor	<a href="mailto:Caroline.Taylor@downdc.gov.uk">Caroline.Taylor@downdc.gov.uk</a>
Cllr. Jarlath Tinnelly	<a href="mailto:jarlath.tinnelly@nmandd.org">jarlath.tinnelly@nmandd.org</a>
Cllr. William Walker	<a href="mailto:william.walker@nmandd.org">william.walker@nmandd.org</a>
Mrs. Marie Ward	<a href="mailto:marie.ward@downdc.gov.uk">marie.ward@downdc.gov.uk</a>
Cllr. Clarke William	<a href="mailto:william.clarke@downdc.gov.uk">william.clarke@downdc.gov.uk</a>

# SOUTHERN DIVISION NEWRY, MOURNE & DOWN DISTRICT COUNCIL

*SPRING REPORT 2015*



<b>Contents</b>	<b>Page</b>
<b>FOREWORD BY THE DIVISIONAL MANAGER</b>	<b>3</b>
<b>1.0 INTRODUCTION</b>	<b>4</b>
<b>2.0 STRATEGIC ROUTE IMPROVEMENTS</b>	<b>14</b>
2.1 New Works	15
2.2 Maintenance of Structures	17
<b>3.0 TRAFFIC AND NETWORK DEVELOPMENT</b>	<b>20</b>
3.1 Minor Works	21
3.2 Collision Remedial	25
3.3 Traffic Calming	26
3.4 Traffic Management	37
3.5 Pedestrian Measures	32
3.6 Safer Routes to School	35
3.7 Lay-bys and Bus Bays	37
3.8 Legislation	38
3.9 Cycling Provisions	39
3.10 Lands	39
3.11 Strangford Ferry	39
<b>4.0 NETWORK MAINTENANCE</b>	<b>40</b>
4.1 Carriageway Resurfacing Schemes 2014/15	42
4.2 Carriageway Resurfacing Schemes 2015/16	53
4.3 Footway Reconstruction	56
4.4 Drainage Maintenance	68
4.5 Routine Maintenance	61
4.6 Utility Works	62
<b>5.0 STREET LIGHTING</b>	<b>63</b>
5.1 Maintenance	63
5.2 New Provisions	63
5.3 Lighting Schemes	64
<b>6.0 NETWORK PLANNING</b>	<b>66</b>
6.1 Planning Applications	67
6.2 Adoptions	68
6.3 Enforcement	68
6.4 Article 80	69
6.5 Abandonments	69

## FOREWORD BY THE DIVISIONAL MANAGER



Chairperson and Councillors

I am pleased to present my first report to the new Newry, Mourne and Down District Council. Within the report you will find details of last year's activities and an outline of the work we propose to undertake in the council area during the current financial year.

I have also taken the opportunity to include some information on how we work to manage, maintain and improve the road network in Southern Division.

Over the last year TransportNI has taken significant steps to implement internal organisational changes to align closely with the new councils. As a result our Southern Division has grown and now serves the three new councils of:

- Newry, Mourne and Down District Council
- Ards and North Down Borough Council ; and
- Armagh City, Banbridge and Craigavon Borough Council

There are significant changes for both the Council and TransportNI which will require co-operation and careful planning on both our parts. I look forward to working with Councillors and Council officials under the new council arrangements.

I welcome the advice, help and co-operation which we receive from local Councillors and Council officials and I look forward to receiving your views when we meet at our formal meeting.

**SIMON RICHARDSON**  
**Divisional Manager**  
**Southern Division**

## Introduction

Transport NI Southern Division is one of 4 Client Divisions across Northern Ireland and our headquarters is based in Marlborough House, Craigavon

Client Divisions represent the public face of Transport NI and take overall responsibility for all that occurs on the road network. We also have separate Consultant (Design and Consultancy Services) and Contractor (Operation and Maintenance) Units which have their Headquarters in Downpatrick and Ballymena respectively. They provide Divisions with expert Design, Contract Procurement and Contractor facilities.

TransportNI Headquarters is in Clarence Court, Belfast. Figure 1 below details the high level organisational structure

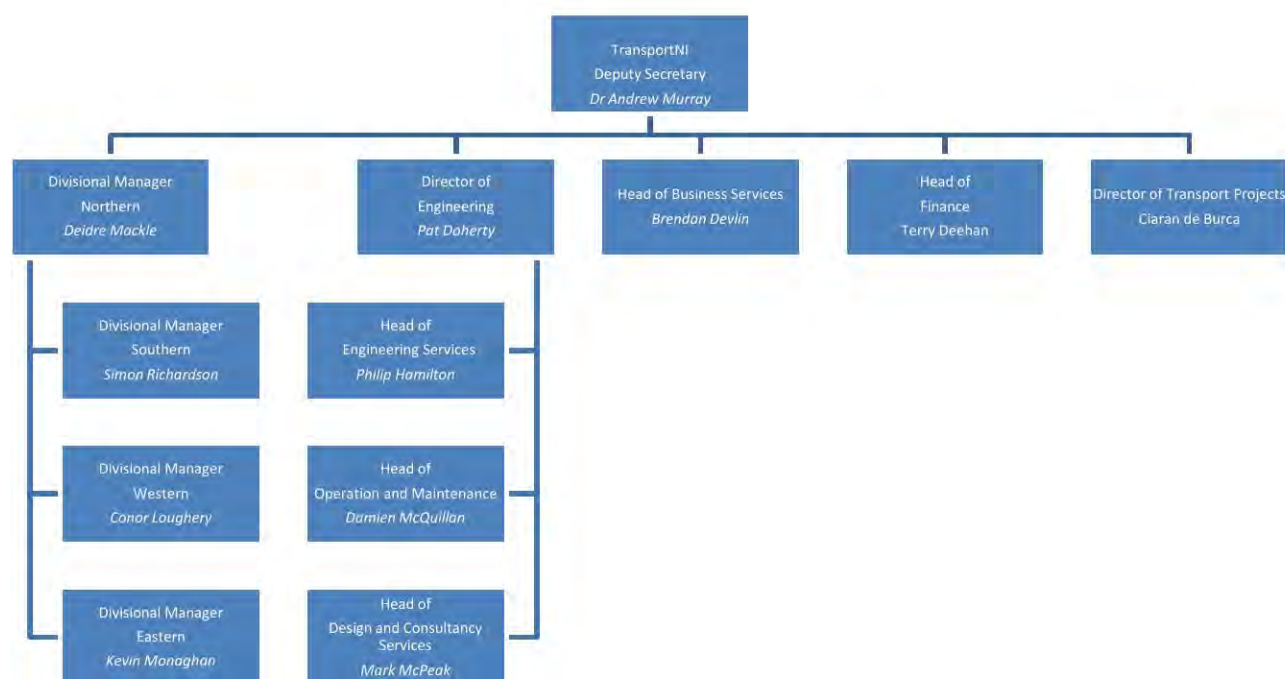
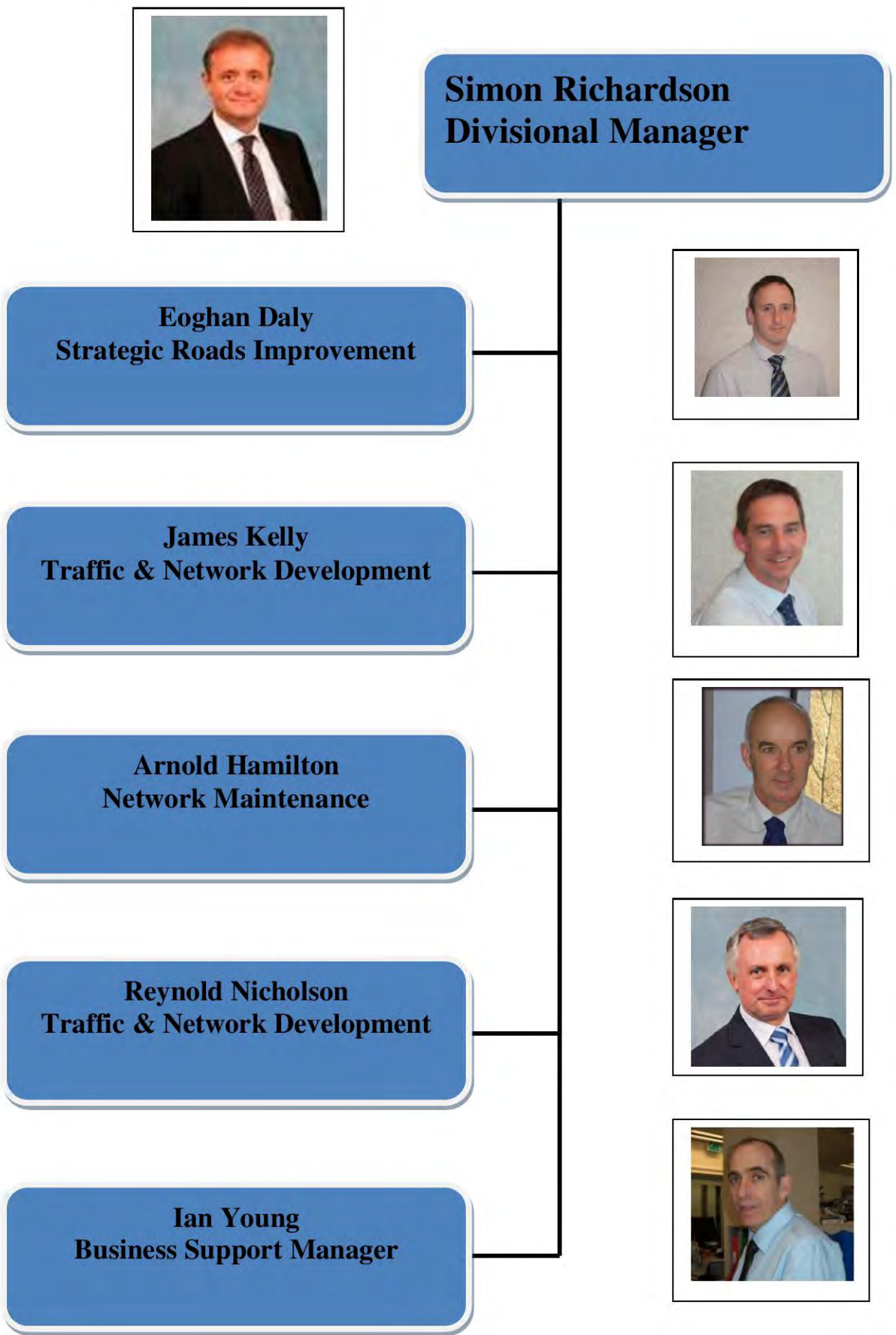


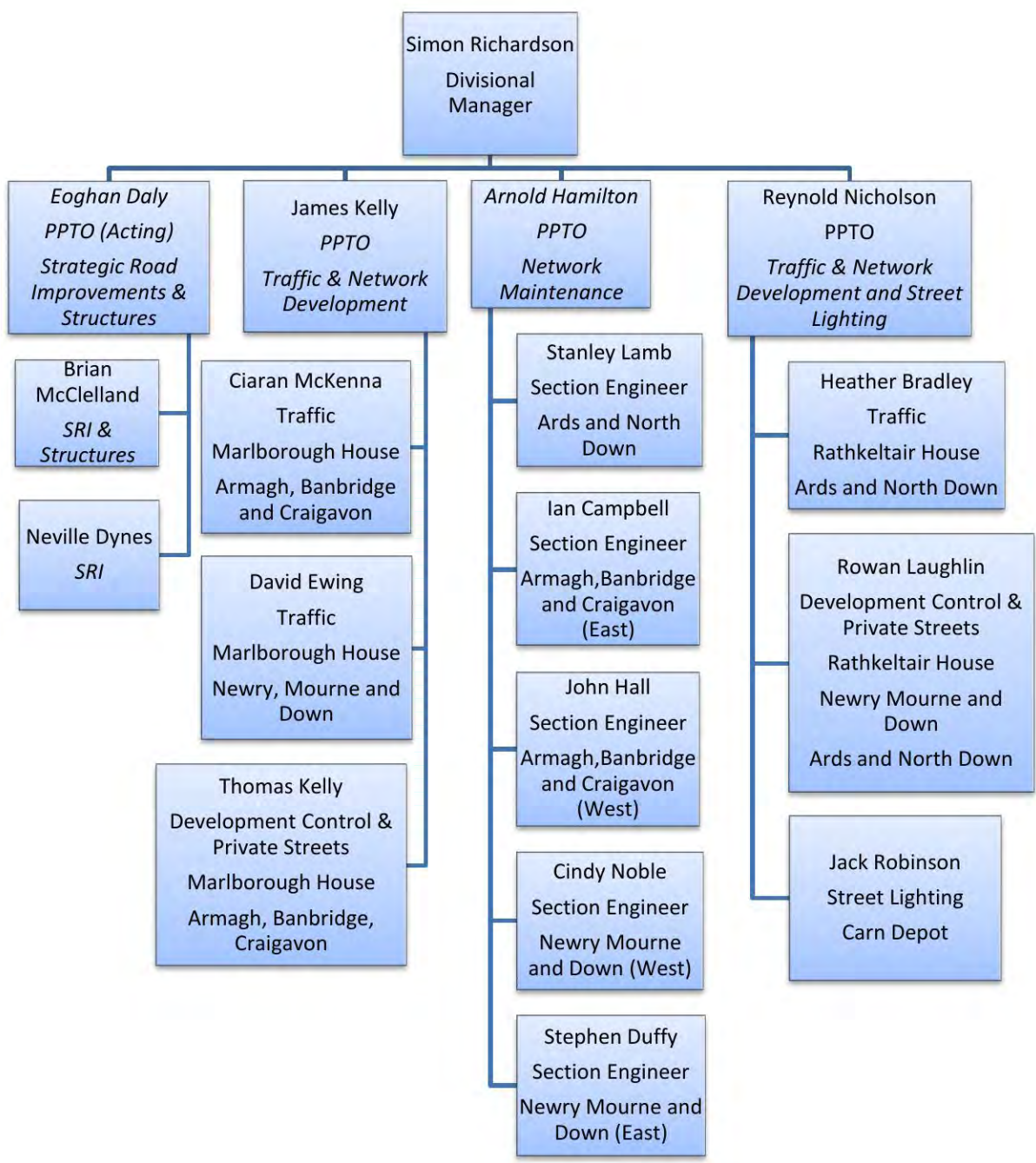
Figure 1 - High Level Organisational Structure



### Southern Division Management Team



# Southern Division Organisational Structure



**SOUTHERN DIVISION** consists of the 3 Council Areas of Armagh City, Banbridge and Craigavon, Ards and North Down; Newry, Mourne and Down.

Our Headquarters is based at Marlborough House, Craigavon, but we also have local Maintenance Offices in each of the Council Areas.

Our Traffic Management, Network Development, Development Control and Private Streets staff are located in Marlborough House, Craigavon and Rathkeltair House, Downpatrick, and are detailed in the Southern Division organisational structure on page six. Our Street Lighting Headquarters for the 3 Council Areas is based at the Carn Section Office, in Portadown.

Our internal Contractor, Transport NI Operation and Maintenance, is centred in Ballymena with staff based at various locations within Southern Division. They carry out a wide range of activities for us, from patching roads to gully cleaning and drainage as well as responding to emergency calls and treating the road network for ice and snow when required.

Our internal Consultancy, Design and Consultancy Services is based in Downpatrick and it manages our engineering activity such as design and contract supervision.

## WHAT WE DO?

Our key roles centre around Maintaining, Managing and Improving the Road Network.

### **Maintaining the Road Network**

Maintaining the network in a safe and serviceable condition remains one of our highest priorities. Maintenance includes a wide range of activities from major reconstruction and resurfacing of road surfaces to the everyday upkeep of the network, such as grass cutting, cleaning gullies, repairing or cleaning road signs and timely salting of roads in preparation for winter conditions. These activities aim to ensure user safety and minimise the potential for more expensive maintenance at a later stage. Maintaining the vast network of electrical equipment is also extremely important to us (especially street lights) as well as a considerable number of retaining walls, bridges and other structures.



**Asphalt resurfacing being carried out within the Division**

### **Managing the Road Network**

We manage the road network to promote its safety and efficient operation.

We have continued to make use of the latest technology and traffic management techniques to improve road safety, provide facilities for all road users, and effectively manage the network.

In an effort to improve road safety, we have an annual programme to implement traffic calming measures to lower traffic speed and improve driver behaviour and discipline.

We provide school safety zones to improve road safety in the vicinity of schools.

We also promote sustainable travel modes and install new and improve footways, cycle ways and facilities.

Effective management of the road network relies upon the efficient operation of Intelligent Transport Systems (ITS) which can include facilities ranging from traffic signals, variable message signs and travel information to very sophisticated traffic control systems for the urban and motorway networks.

Our facilities to monitor traffic flow and provide on trip information to drivers have increased through the addition of more CCTV cameras and roadside variable message signs. Our main sources of pre-trip information are the trafficwatch website, [www.trafficwatchni.com](http://www.trafficwatchni.com), radio broadcasts and our traffic information telephone line 08457123321.

### **Improving the Road Network**

To support the Government's objective to ensure that our roads are of a standard capable of producing reduced and more reliable journey times we will promote a programme of increased investment to improve the strategic road network, giving priority to the key transport corridors.

Within Southern Division work on schemes is programmed in line with the 10 year Investment Strategy for Northern Ireland (ISNI) which was endorsed by the Assembly in January 2008.

Road safety is paramount in all we do and we will continue to implement a programme of safety engineering measures, consisting of collision remedial schemes and traffic calming. We will also implement a programme of Safer Routes to Schools combining engineering measures with education and awareness.

We will continue to improve the local road network by implementing a number of minor works schemes, by improving the extent of our street lighting and by strengthening our bridges to modern day standards.

## TRANSPORT NI FUNCTIONS

### Winter Service

The aim of winter service is to help, as far as possible, main road traffic to move safely and freely in wintry conditions by spreading salt at the most effective times. It is vital that we cover as much traffic as possible for the available budget and criteria have been devised to identify the roads that would provide the best cost benefits.

Within Southern Division, a fleet of 33 gritters and over 70 personnel were available to salt approximately 1760 km of main roads. We aim to complete this in just over 3 hours which is an immense logistical exercise. There were approximately 98 call-outs this year, using around 18,000 tonnes of salt, at a cost of just under £20,000 per call-out to treat all roads on the salting schedule.



**A Snow Blower in operation within Southern Division.**

Because of the high costs involved, it is essential that our engineers take informed decisions and they are assisted in this task by the very latest technology. There are currently 21 Transport NI maintained weather stations across Northern Ireland with an additional 4 stations maintained by the DBFO companies, and with further data provided from 10 sites in Southern Ireland.

Information on our salting activities continues to be relayed electronically to the broadcast media to ensure that the latest news on road conditions is available to motorists across Northern Ireland. Additional information,

including our winter service leaflet, can be found on our website along with advice on driving in poor weather conditions.

## **Development Control and Private Streets**

We contribute to the Planning (NI) Order 1991 town and country planning process with the provision of transportation and roads related advice to DOE Planning and the Newry Mourne and Down Council Planning Office.

New housing developments that have been 'determined' and which will eventually be adopted and maintained must be built to a standard acceptable to the Department. We supervise the construction of these streets at various stages to ensure they meet the required standard.

We also work closely with the Council Planning Office on its Development Plans which are the basis against which future development applications are considered.

## **Car Parking**

On the 1 April this year Transport NI transferred 37 car parks to Newry, Mourne and Down District Council. Transport NI and the Council are working together to provide a suitable enforcement service over the next 18 months when Council will then decide on future enforcement arrangements.

In all of our towns and cities, parking restrictions are in place to manage traffic, to reduce congestion and to improve road safety. We work in partnership with our service provider, NSL, to enforce parking restrictions and ensure compliance with on and off-street parking regulations.

## **Emergency Response Service**

We have procedures in place to assist with roads related emergency incidents ensuring a (24/7) response, 24 hours a day, 7 days a week. We are also committed to co-operating with and assisting the blue light services and other statutory agencies, as far as practical, to ensure that quick and appropriate responses are made to incidents.

Our emergency response procedures are supported by a well established reporting system to gather operational information from

across Northern Ireland during an emergency. These arrangements feature a Roads INCIDENT Desk that assesses new and follow-up incident reports received across Northern Ireland and forwards them to the Press Office, Private Office and Senior Managers. A lead communicator is available out of hours all year around to ensure that the latest news on road conditions is available to the travelling public.

### **Street Works**

The Northern Ireland road network is a major public asset and is valued at over £32 billion, below which runs a complicated network of pipes and cables. This underground apparatus delivers key services to the public including water supply, waste water disposal, electricity, gas and telecommunications. For that reason Parliament has given utility companies the right to open the public road to place or maintain their equipment.

Transport NI works closely with utility companies through the Northern Ireland Road Authority and Utilities Committee to minimise disruption caused by street works and ensure better quality reinstatements through co-operation and co-ordination and through implementation of agreed codes of practice.

### **Bridge Strengthening**

Each year, we have a significant program to strengthen our bridges. This includes repairs to rectify damage to bridges caused by severe weather conditions.

### **Street Lighting**

We provide and maintain street lighting on all adopted thoroughfares within urban and, in certain circumstances, on rural roads.

To reduce light pollution and improve energy conservation, we have specified modern efficient lanterns for all our new and upgrading schemes. We have also focused on the selection of appropriate lighting design levels for new schemes and have conducted a number of energy conservation trials including replacing existing luminaires with luminaires of lower wattage output and improved optical performance.



## Local Transport and Safety Measures

Each year we implement a range of measures to improve the safety and efficiency of the road network. Schemes include:-

- Collision Remedial measures at specific sites;
- Traffic Calming measures;
- Provision of new footways & other improvements for pedestrians;
- Provision of new cycle lanes;
- School Safety Zones;
- Controlled Pedestrian Crossings;
- Traffic Management measures; and
- The use of Intelligent Transport Systems to provide traffic control and travel information to road users

We also undertake a number of Minor Road Improvements which include junction improvements and general carriageway realignment.

## Our Customers

We provide a quality customer service by:-

- Supplying up-to-date information through our publications, our website [www.drdni.gov.uk](http://www.drdni.gov.uk) and at various shows and exhibitions;
- Listening to customer needs; and
- Remaining open, transparent and visible at all times

We publish a range of information on the services we provide and specific road schemes. Our free newspaper, "On the Move", is published twice a year and distributed through local offices, and public libraries.

We provide up-to-date travel news through our travel information website [www.trafficwatchni.com](http://www.trafficwatchni.com) and our travel hotline on 08457 123321. The information is updated at 10 minute intervals and broadcast on BBC Radio Ulster during peak times.

During the development phase of major roads projects, we consult with a wider range of stakeholders, including elected representatives and the public and particularly those likely to be directly affected by the works. We hold exhibitions at local venues and inform the public through press articles, leaflet drops and individual visits as necessary.

## 2.0 STRATEGIC ROUTE IMPROVEMENTS

**Principal Engineer- Eoghan Daly (02838 32 0368)**  
[TransportNI.Southern@drdni.gov.uk](mailto:TransportNI.Southern@drdni.gov.uk)



**Eoghan is supported by the following staff:**

**Brian McClelland** [TransportNI.Southern@drdni.gov.uk](mailto:TransportNI.Southern@drdni.gov.uk)  
**Marlborough House, Central Way**  
**(02838 320 188)**

Responsibilities include:

- A28 Armagh East Link;
- A3 Armagh North & West Link;
- A1 Junctions Phase 2 and,
- Structures in Southern Division.



**Neville Dynes** [TransportNI.Southern@drdni.gov.uk](mailto:TransportNI.Southern@drdni.gov.uk)  
**Marlborough House, Central Way**  
**(02838 320 378)**

Responsibilities include:

- A24 Ballynahinch Bypass,
- A99 Extension to Millennium Way and;
- Newry Southern Relief Road.



## 2.1 NEW WORKS

### Schemes planned for 2015/16 and onwards

<b>SCHEME DESCRIPTION</b>
<p><b>A24 Ballynahinch Bypass</b></p> <p>Ballynahinch Bypass is currently being progressed through Stage 3 of the scheme assessment process, which includes the Statutory Procedures.</p> <p>The draft Direction Order, draft Vesting Order and Environmental Statement were published during the week commencing 23 March 2015.</p> <p>The publication of these documents was followed by a statutory 8-week consultation process to allow the public the opportunity to support, object and comment on the Environmental Statement or the published draft Orders.</p> <p>As part of this consultation period, which closed on 19 May, a Statutory Orders Exhibition was held in April in the Market House, Ballynahinch, with over 500 attendees.</p> <p>A number of objections were received to the draft statutory orders and it is likely a Public Inquiry will be convened to determine if the scheme should go ahead as planned. It is envisaged that if required a Public Inquiry would be held early in 2016.</p> <p>Progression onto TransportNI's Construction Programme remains subject to the bypass proposal clearing these statutory procedures, continuing to have a satisfactory economic appraisal and is dependent on funding made available in future budget settlements.</p>
<p><b>Newry Southern Relief Road</b></p> <p>Newry Southern Relief Road was moved into TransportNI's Forward Planning Schedule in February 2015.</p> <p>Work has subsequently commenced on the Stage 1 Preliminary Options Scheme Assessment. This work involves updating key project information and as part of this work Traffic Surveys were undertaken in May 2015.</p> <p>The Trans-European Transport Network (TEN-t) project application for funding was submitted to the European Commission for consideration in February 2015. It is hoped that this bid will be successful in attracting additional funding to help with the scheme development.</p>

**SCHEME DESCRIPTION****Newry Southern Relief Road (Cont'd)**

Archaeological investigations of the tree ring features / sconces located on the side of Fathom Mountain were completed in December 2014. Although the final report of these investigations has not yet been received the interim findings indicate that no significant archaeological objects were identified. The findings of this work must be confirmed to the satisfaction of the Northern Ireland Environment Agency.

Progress of the scheme remains dependent upon a number of factors including; the proposal clearing the statutory procedures, continuing to have a satisfactory economic appraisal and the funding made available in future budget settlements.

**A7 Rowallane to Doran's Rock**

Design work for this proposal is expected to be complete by the Autumn of 2015.



An Environmental Assessment is currently being undertaken to help to inform the design of the proposal and a geotechnical investigation is also programmed to be carried out in June 2015.

Land, much of which is agricultural but includes some that is residential, will be required from adjacent land owners and a vesting order will be required.


Progression of the scheme will be dependent upon the scheme clearing any necessary statutory procedures and the availability of funding in future budget settlements.

## 2.2 MAINTENANCE OF STRUCTURES

### 2.2.1 Structures Strengthening Schemes Completed 2014/15

Structures Strengthening		
<b>Oldtown Road, Cullyhanna</b> Bridge replacement		<b>Bridge No. 41310</b>
		
Other Bridges strengthened during the period -		
Bridge No	Name	Area
41536	Crossan Bridge, Old Newry Road, Rathfriland	N,M&D
40285	A2, Mullagh Bridge, Ballymartin, Kilkeel	N,M&D
41370	Blaney Rd, Crossmaglen	N,M&D
40498	Kilkeel Rd, Hilltown	N,M&D
41536	Crossan Rd, Old Newry Rd, Newry	N,M&D

### 2.2.2 Structures Strengthening Schemes Proposed 2015/16

<b>Structures Strengthening</b>	
<p><b>Ballyfannaghan Bridge, Cullyhanna</b> Bridge replacement</p>	<p><b>Bridge No. 41309</b></p>
	
<p>View of the excavation for the new Bridge.</p>	
<p><b>Quay Rd, Downpatrick.</b> Strengthening of the abutments, arch and rebuild of parapet wall.</p>	<p><b>Bridge No. 50036</b></p>
<p><b>Woodgrange Rd, Loughinisland</b> New Invert to bridge</p>	<p><b>Bridge No. 50126</b></p>
<p><b>Moneycarragh, Castlewellan Rd, Clough</b> New stone pitching Invert to bridge</p>	<p><b>Bridge No. 50349</b></p>
<p>All other bridges are inspected routinely. This generates an ongoing programme of repairs to bridges and other structures.</p>	

### 2.2.3 Structures Maintenance Schemes Completed 2014/15

<b>Structures Maintenance</b>	
<b>Moneylane Rd Dundrum</b>	- Parapet repairs and vegetation removal
<b>Drumboniff Rd Hilltown</b>	- Parapet repairs
<b>Various Seawall repairs within the Council Area</b>	

## 2.2.4 Structures Maintenance Schemes Proposed 2015/16

### Structures Maintenance

**Ballyvally Road, Mayobridge** - Retaining Wall repairs

**Drumghlis Rd, Crossgar** - Retaining Wall repairs

All other bridges are inspected routinely. This generates an ongoing programme of repairs to bridges and other structures

## 2.2.5 Vehicle Restraint Systems Completed 2014/15

### Vehicle Restraint Systems

**Flagstaff Road, Newry**  
New VRS installed.



The start of the new VRS on Flagstaff Road



A section along the new length installed

### Other VRS Schemes completed within 2014/15

Scheme -	Area
A2 Warrenpoint Road Dual Carriageway	N&M
A28 Armagh Road, Newry	N&M
Belfast Road, Downpatrick	Down
Belfast Road, Downpatrick (at Quoille River)	Down
A2 Kilkeel Road, Ballagh – complete April 2015	Down

### 3.0 TRAFFIC AND NETWORK DEVELOPMENT

**Principal Engineer-** **James Kelly (3832 0001)**  
[traffic2.south@drdni.gov.uk](mailto:traffic2.south@drdni.gov.uk)



**James is supported by the following staff:**

**David Ewing (Tel: 3834 1144)** [traffic2.south@drdni.gov.uk](mailto:traffic2.south@drdni.gov.uk)

**SENIOR ENGINEER for Traffic and Network Development**

David's team is responsible for:

- Network Development
- Traffic Management
- Collision Remedial
- Traffic Calming
- Bus Priority Measures
- Pedestrian Measures
- Cycling Measures
- Temporary Road Closures
- Land Acquisition



**Ned Shannon (Tel: 3834 1144)**  
[traffic2.south@drdni.gov.uk](mailto:traffic2.south@drdni.gov.uk)

Traffic & Network Development Engineer



**Stephen Faulkner (Tel: 3834 1144)**  
[traffic2south@drdni.gov.uk](mailto:traffic2south@drdni.gov.uk)

Traffic & Network Development Engineer







### LOCAL TRANSPORT and SAFETY MEASURES

Southern Division will invest around £1.5 million this year in our LTSM programme to improve road safety and encourage local transport use including:

- Minor Works and Micro Schemes
- Collision Remedial
- Traffic Calming
- Traffic Management
- Pedestrian Measures
- Safer Routes to School
- Lay-bys and Bus Bays
- Legislation

#### 3.1 MINOR WORKS

##### 3.1.1 MINOR WORKS - Schemes Completed 2014 / 2015

<b>SCHEME DESCRIPTION</b>	
<p><b>B8 Hilltown Road, Mayobridge at House No. 25 (Murphy's Corner)</b></p> <p>Work on this scheme to improve safety and traffic progression by realigning this bend known as Murphy' Corner was completed in May 2015.</p> <p>Initial observations would indicate that the work has provided extensive benefits for drivers on this busy stretch of the B8 Hilltown Road.</p>	
	
Before	During

**SCHEME DESCRIPTION**

**U5022 Creggan Road, Mountnorris**

Work on this scheme to provide localised carriageway widening was completed in late January 2015.



**C278 Loughinisland Road / Tareesh Lane, Annacloy**

Work on this scheme to provide improved visibility along the Loughinisland Road at its junction with Tareesh Lane plus localised road widening and realignment of the bend was completed in March 2015.

Early observations would indicate that the work has provided extensive benefits for drivers on the busy C278 Loughinisland Road.



Before



After

**SCHEME DESCRIPTION**

**C290 Magherhamlet Road / Dunmore Road, Spa**

Work on this scheme to improve visibility at this crossroads for drivers exiting the minor roads onto the C290 plus improved awareness of the junction for motorists on the main road was completed in May 2015.

Early observations would indicate that the work has provided extensive benefits for drivers at this junction.



Before



After

**3.1.2 MINOR WORKS - Schemes planned for 2015/16**

**SCHEME DESCRIPTION**


**B7 Milltown Street, Burren**

This scheme will provide a 350m footway extension along Milltown Street from Donaghaguy Road to the local supermarket.

The land for this scheme has been successfully acquired and consultation with affected landowners to discuss proposed accommodation works is ongoing.

We aim to commence work on site late summer 2015.




<b>SCHEME DESCRIPTION</b>	
<p><b>B30 Crossmaglen Road / Longfield Road, Camlough, Newry</b></p> <p>This scheme aims to provide enhanced safety with the provision of high friction carriageway surfacing and road markings at this bend on the Crossmaglen Road at Longfield Road junction.</p> <p>We aim to start work on site July 2015.</p>	

**3.1.3 MINOR WORKS - Schemes planned for beyond 2016/17**

<b>SCHEME DESCRIPTION</b>	
<p><b>U318 Vianstown Road / Bishops Brae Road, Downpatrick</b></p> <p>This scheme aims to provide improved visibility at this junction and improvements to the junction radii and localised carriageway widening.</p> <p>A proposal for a replacement dwelling at this already constrained site has required further design to reduce the impact on the proposed site close to the junction.</p> <p>We aim to start work on site, during the 2016/17 financial year subject to the availability of finance and successful land acquisition.</p>	
<p><b>DEVELOPER LED SCHEMES IN THE MOURNE AREA</b></p> <p>Progress on the following schemes will remain on hold until the full extent of related private developer proposals is known. The schemes will be reviewed annually for consideration for inclusion in our Priority List for the Newry and Mourne District Council area.</p>	
<p><b>U6217 Mill Road, Kilkeel</b> Footway link along Mill Road, Kilkeel.</p>	
<p><b>U6539 Kitty's Road, Kilkeel</b> Junction Visibility improvement and footway provision.</p>	

**3.1.4 MINOR WORKS - Micro Schemes completed 2014 / 2015**

Micro Schemes are typically low level engineering works undertaken by the local section office at the request of colleagues in Network Development.

<b>SCHEME DESCRIPTION</b>
<p><b>U251 Struell Wells Road, Downpatrick</b></p> <p>This scheme involved creating formalised passing areas and road widening along the roadway. It was completed in October 2014.</p> <div style="display: flex; justify-content: space-around;">  </div> <p>Two views of Struell Wells Road after the road widening exercise was completed.</p>

**3.1.5 MINOR WORKS - Micro Schemes proposed 2015/2016**

<b>SCHEME DESCRIPTION</b>
<p><b>U1226 Slievegrane Road, Downpatrick</b></p> <p>This scheme will involved creating formalised passing areas along the roadway.</p>

**3.2 COLLISION REMEDIAL - Schemes Completed 2014 / 2015**

<b>SCHEME DESCRIPTION</b>
<p>There are no collision remedial schemes identified for this financial year. A further review will be carried out later this year when updated collision data is received from the PSNI.</p>

### 3.3 TRAFFIC CALMING

#### 3.3.1 TRAFFIC CALMING - Schemes proposed 2015/16

<b><i>SCHEME DESCRIPTION</i></b>
<p><b>Traffic Calming</b></p> <p>The programme for the completion of Traffic Calming measures has been finalised for the Newry, Mourne and Down Council Area for the next two years.</p> <p>This year, subject to the available finance and the successful outcome of the consultation process, TransportNI plan to carry out traffic calming Schemes at the following locations:</p> <p><b>2015/16</b></p> <ol style="list-style-type: none"><li>1. College Square, Bessbrook</li><li>2. Martins Lane, Newry</li></ol> <p><b>2016/17</b></p> <ol style="list-style-type: none"><li>1. B175 Ballylough Road Annesborough, Castlewellan</li><li>2. A25 Dublin Road /A50 Bann Road Castlewellan</li></ol>

### 3.4 TRAFFIC MANAGEMENT

#### 3.4.1 TRAFFIC MANAGEMENT - Schemes Completed 2014 / 2015

<b>SCHEME DESCRIPTION</b>
<p><b>Collins Corner, Downpatrick – Proposed Junction Improvement</b></p> <p>The delivery of this scheme has been delayed. An alternative design is currently being developed for this junction improvement scheme; this followed the completed geotechnical survey of the hospital site and existing embankment. Design work is continuing to negate land requirements and address topography issues to secure a suitable design.</p> <p>It is hoped that a final design layout can be agreed upon completion of the Downpatrick Traffic Study.</p>

#### 3.4.2 TRAFFIC MANAGEMENT - Schemes proposed 2015/2016

<b>SCHEME DESCRIPTION</b>
<p><b>Downpatrick Traffic Study</b></p> <p>TransportNI are continuing to engage with our partnering consultants, AMEY Ltd, to complete a robust study for the town. Surveys are currently underway to provide the most up-to-date information on where traffic is coming from and going to within the town.</p> <p>A full review of all recent traffic studies will ensure the best option for traffic progression through the town can be progressed. This review will include the Down District Council Town Centre Masterplan document.</p> <p>There will be no unnecessary delays in the completion of this important work, when full details are known, a meeting with key stakeholders, including the Council will be arranged.</p>

### **SCHEME DESCRIPTION**

#### **Langley Road Estate, Ballynahinch – Proposed Pilot 20mph Speed Limit**

Langley Road Estate Ballynahinch has been selected by TransportNI as one of a number of province wide 'signed only 20mph speed limit' sites.

TransportNI has completed public consultations with all local residents in Langley Road Estate, the results of which indicated a high level of support for the proposal to introduce a signed only 20mph speed limit to the residential streets of Langley Road Estate.

The necessary legislation required to introduce a reduced 20mph speed limit is currently being prepared

### **3.4.3 TRAFFIC MANAGEMENT - Road Markings completed 2014/15**

#### **SCHEME DESCRIPTION**

- 2 No. SLOW road markings Chapel Hill, Burren
- 1 No. SLOW road marking Tamnaharry Road, Burren
- 1 No. Giveaway marking plus centreline, Carrigans Pass
- 1 No. SLOW road marking Lough Road
- 1 No. SLOW road marking Maytown Road, Bessbrook
- 1 No. T bar road marking Main Street, Hilltown
- 2 No. SLOW road markings Lissummon Road, Newry
- 1 No. SLOW road marking Hilltown Road, Rathfriland
- 1 No. SLOW road marking Sandbank Road, Rostrevor
- 1 No. SLOW road marking B8 Hilltown Road
- 1 No. Give Way markings at Mourneview Park, Kilkeel
- 2 No. "T-bar" No parking road markings at Charlemont Square, Bessbrook
- 6 No. "T-bar" No parking road markings at Saint Clares avenue, Newry
- 2 No. Hatched no parking road markings at Charlemont Square, Bessbrook
- 1 No. SLOW road marking B7 Bavan Road Mayobridge
- 1 No. "T-bar" No parking road markings at Springfield Road, Warrenpoint
- 1 No. Central hatched markings & right turning pocket, A25 Mill Hill / Station Road, Castlewellan.
- 1 No. Double Yellow Lines, Mini-Roundabout - junction of Comber Street / Demesne, Saintfield.
- 1 No. Double Yellow Lines, WIN Business Park Canal Quay, Newry.



### 3.4.4 TRAFFIC MANAGEMENT - Road Markings proposed 2015/16

#### SCHEME DESCRIPTION

- Central Ladder Markings A28 Armagh Road / Jockeys Brae Road Junction, Newry
- Renewal / upgrading lines and markings in Mayobridge at B8 Newry Road and Chapel Hill Road
- Right-Turning Lane A27 Mill Hill Road / Station Road, Castlewellan
- 2 No. SLOW road markings at Fane Valley Park, Aughnagurgan Road, Newtownhamilton
- 1 No. SLOW road Marking B8 Hilltown Road Cabra at St. Mary's Terrace
- 1 No 30mph Roundel on B8 Castlewellan Road, Hilltown
- 1 No 30mph Roundel on B8 Newry Road, Hilltown
- 1 No Keep Clear markings at Old Town Docks, Warrenpoint.
- 2 No School Keep Clear road markings at St Joseph's High School, Crossmaglen
- 1 No School Keep Clear road markings at Southern regional College, Greenbank Campus Newry

### 3.4.5 TRAFFIC MANAGEMENT – Traffic Signs completed 2014/15

#### SCHEME DESCRIPTION

- 1 No. Junction left warning sign, Lissummon Road, Newry
- 1 No. Junction right warning sign, Lissummon Road, Newry
- 1 No. Junction right warning sign, Maytown Road, Newry
- 2 No. Bend warning signs Bridge Road, Burren
- 2 No. Bend warning signs Bridge Road, Burren
- 1 No. Giveaway sign yellow backing Tamnaharry Road, Burren
- 1 No. Staggered warning sign Newry Road, Drumintee
- 1 No. Newry / Forkhill direction sign Mountain Road, Drumintee
- 1 No. Junction left warning sign A25 Newtown Road, Camlough
- 2 No. Staggered warning signs Newry Road, Mayobridge
- 2 No. Double bend warning signs A25 Finnard Road, Rathfriland
- 1 No. Junction left warning sign, Sandbank Road, Rostrevor
- 2 No. Enhanced 40mph signs, B7 Clea Lough Road, Shrigley, Killyleagh
- 1 No. Give way sign, B7 Crossgar Road / Ballylone Road, Ballynahinch
- 2 No. Pedestrian Warning Signs, Craigmore Road, Newry
- 2 No. Bend Ahead Signs, Tullyah Road, Belleek
- 2 No. Chevron signs, A2 Tyrella Road, Ballykinlar at St Joseph's Church
- 42 No. Hazard Marker Posts, Tullyah Road, Belleek
- 2 No. Enhanced Chevron Sign, Carrickrovaddy Road, Newtownhamilton
- 1 No. Chevron Sign, Carrickrovaddy Road, Newtownhamilton
- 2 No 'Reduce Speed Now' Marker Plates, Carrickrovaddy Road,

**Newtownhamilton**

29 Hazard Marker Posts, Mill Road, Bessbrook

2 No. Hazard Marker Posts, on Derryboy Road, Crossgar

1 No. Give way sign, Grange Meadows, Kilkeel

4 No. Mini Roundabout Ahead signs, Grange Meadows, Kilkeel

1 No. Give way sign, Ballylone Road, Ballynahinch

1 No. No Through Road for vehicular traffic, on Churchfield Heights, Castlewellan

2 No. No Entry For Vehicular Traffic Signs on Old A1 Belfast Road, Newry

2 No. No Entry For Vehicular Traffic Signs on A1 jct Moneymore Road, Newry

1 No. Hidden Dip Warning Sign on Greenan Road, Warrenpoint

1 No. 30 mph Speed Limit Sign on Ballyvally Road, Mayobridge

**3.4.6 TRAFFIC MANAGEMENT – Traffic Signs proposed 2015/16*****SCHEME DESCRIPTION***

- 2 No Pedestrian Warning Signs at Fane Valley Park, Aughnagurgan Road, Newtownhamilton
- 2 No. Children to school warning sign B8 Hilltown Road Cabra at St. Mary's Terrace
- 1 No. Junction right warning sign B8 Hilltown Road Cabra at St. Mary's Terrace
- 1 No. Junction left warning sign, Green Road / Chapel Road intersection at junction leading to Father Cullen Park, Bessbrook
- 1 No. Children to Playground warning sign at John Martin Street, Newry

**3.4.7 TRAFFIC MANAGEMENT – Accessible Parking Bays Provided 2014/15**

<b>SCHEME DESCRIPTION</b>	
15, Killeavey Road Newry	59a Boat Street Newry
36, Springfield Road Warrenpoint	9, Killeavey Road, Noorey's Meadow, Newry
31, Dublin Road Newry	
	

**3.4.8 TRAFFIC MANAGEMENT – Accessible Parking Bays Proposed 2015/16**

<b>SCHEME DESCRIPTION</b>	
<b>Accessible Parking Bays Proposed</b>	
11 Castleblaney Street, Newtownhamilton Newry	
Please Note: - Proposals are subject to public, local authority and PSNI consultations and without objection, enables the respective legislation to be invoked, revoked or amended.	

**3.4.8 TRAFFIC MANAGEMENT – Removal of Accessible Parking Bays 2014/15**

<b>SCHEME DESCRIPTION</b>	
6, Thomas Street Newry Warrenpoint	30, Springfield Road

### 3.4.9 TRAFFIC MANAGEMENT – Proposed removal of Accessible Parking Bays 2015/16

#### SCHEME DESCRIPTION

**Proposed removal of Accessible Parking Bays**  
There are currently no Accessible Parking Bays proposed for removal. The situation is kept under review.

Please Note: - Proposals are subject to public, local authority and PSNI consultations and without objection, enables the respective legislation to be invoked, revoked or amended.

### 3.5 PEDESTRIAN MEASURES

#### 3.5.1 PEDESTRIAN Measures - Completed 2014 / 2015

#### SCHEME DESCRIPTION

##### A7 Saintfield Road at Killbawn Road, Crossgar

Work on this scheme to provide a section of footway link from Killybawn Road to the bus stop located on the main A7 Saintfield Road was completed in February 2015.

This scheme has improved accessibility and road safety for pedestrians and bus commuters.



View along the A7 prior to work commencing following completion of works



View

**SCHEME DESCRIPTION**

**Shimna Road Newcastle**

Works were completed during April 2014.

Existing footways have been widened on both sides along the entire Shimna Road (from its junction with Bryansford Road to junction with Causeway Road), in conjunction with resurfacing works and provision of new street lighting scheme.



The newly widened footways along both sides of Shimna Road at the end of resurfacing works

**Shimna Road Newcastle**

An additional controlled pedestrian crossing has been provided between Castle Park and Island Park to enhance pedestrian facilities between both parks. A delay has been incurred establishing an electrical supply to these lights and it is hoped this work can be completed in the coming weeks.

**3.5.2 PEDESTRIAN Measures – proposed 2015/2016**

**SCHEME DESCRIPTION**

**Belfast Road, Newry at Ardmore PSNI**

Work is progressing on a controlled pedestrian crossing on the Belfast Road adjacent to the PSNI Station.

### **SCHEME DESCRIPTION**

#### **Downshire Road Newry at Church Avenue**

It is proposed to install an un-controlled pedestrian crossing facility on Downshire Road adjacent to Church Avenue.

#### **Saul Street, Downpatrick**

Work is proposed to commence on the installation of a Puffin Crossing in mid summer subject to availability of finance.



#### **B8 Newry Road / Yellow Road, Hilltown**

Extension of existing footway on the Hilltown Road.

#### **St. Killian's Park Lower, Kingsmill Road, Whitecross**




Provision of a pedestrian footway on grass area.

#### **Milltown Street Burren**


This road improvement scheme mentioned earlier in the report also includes 350m of footway. Subject to final agreement with residents it is anticipated that this scheme will start during the summer in 2015.

### 3.6 SAFER ROUTES TO SCHOOL

#### 3.6.1 SAFER ROUTES TO SCHOOL - Completed 2014/15

<b>SCHEME DESCRIPTION</b>	
<p><b>Chapel Hill Road, Mayobridge</b></p> <p>Work has been completed to substitute existing “School” warning signs with enhanced high profile flashing amber light signs on both approaches to the school.</p> <p>This work was completed in April 2015</p>	
<p><b>B175 Ballylough Road, Annesborough at Annesborough Integrated Primary School</b></p> <p>Work has been completed to substitute existing “School” warning signs with enhanced high profile flashing amber light signs on both approaches to the school.</p> <p>This work was completed in April 2015.</p>	
<p><b>Church Avenue Newry</b></p> <p>Work has been completed to substitute existing “School” warning signs with enhanced high profile flashing amber light signs on both approaches to the school.</p> <p>This work was completed in April 2015.</p>	

**3.6.2 SAFER ROUTES TO SCHOOL – Proposed 2015/16**

<b>SCHEME DESCRIPTION</b>	
<p><b>Hilltown</b></p> <p>Work is currently on-going to provide an additional “Patrol” warning signs with enhanced high profile flashing amber light signs at St Patrick’s Primary School.</p>	
<p><b>John Street, Downpatrick at St Mary’s High School</b></p> <p>Work is currently on-going to provide an additional “Patrol” warning signs with enhanced high profile flashing amber light signs at John Street.</p> <p>This additional sign will complement the existing flashing signs located on both Ardglass Road approaches to the school.</p>	 <p>Proposed additional SRS measures</p>

<b>SCHEME DESCRIPTION</b>
<p><b>Clonalig Primary School 120 Concession Road, Crossmaglen, Co. Armagh</b></p> <p>TransportNI plan to implement a part time speed limit of 20mph outside the school (times to coincide with drop-off / pick-up times).</p> <p>It is proposed to progress the necessary legislation this year with a view to starting work on the ground in the current financial year, subject to satisfactory completion of the necessary legislative process.</p>



**3.7 LAY-BYS AND BUS BAYS - Completed 2014 / 2015**

**SCHEME DESCRIPTION**

**A7 Belfast Road / New Bridge Street, Downpatrick**

Work on this scheme to improve traffic progression and road safety for drivers on the A7 approach to Downpatrick by lengthening the existing left turn lane and providing a dedicated bus lay-by was completed in March 2015.

Early observations would indicate that the work has provided extensive benefits for drivers and public transport.



Before



After

**Legmoylin Road, Silverbridge**

It is proposed to provide a bus stop hard-standing area on the Legmoylin Road close to the Silverbridge Road junction.

Work on this scheme to provide a bus stop hard-standing area on the Legmoylin Road close to the Silverbridge Road junction was completed in Autumn 2014.

This scheme has improved accessibility and road safety for bus commuters.



**3.8 LEGISLATION**

**3.8.1 LEGISLATION - Waiting restrictions provided 2014/15**

<b>SCHEME DESCRIPTION</b>
<p>Newcastle Street, Kilkeel - Working Day Restriction                      Greencastle Street, Kilkeel - Working Day Restriction                      Main Street, Hilltown - Working Day Restriction</p> <p>Merchants Quay (Frances Street junction to Sugar Island) - Working Day restriction and No Waiting at anytime (in relation to proposed Public Realm scheme)</p> <p>Hospital Road, Newry - No waiting at anytime                      Dock Street, Warrenpoint - No waiting at anytime                      Thomas Street, Newry - No waiting at anytime</p>

**3.8.2 LEGISLATION - Waiting restrictions proposed 2015/16**

<b>SCHEME DESCRIPTION</b>
<p>Drumalane Rd, Newry - Extension of existing waiting restrictions</p> <p>Please Note: - <i>Proposals are subject to public, local authority and PSNI consultations and without objection, enables the respective legislation to be invoked, revoked or amended.</i></p>

**3.8.3 LEGISLATION – Traffic Orders proposed 2015/16**

<b>SCHEME DESCRIPTION</b>
<p>Barcroft Park, Newry – One Way Order</p> <p>Please Note: - <i>Proposals are subject to public, local authority and PSNI consultations and without objection, enables the respective legislation to be invoked, revoked or amended.</i></p>

### 3.9 CYCLING PROVISION Schemes Completed in 2014/15

<b>SCHEME DESCRIPTION</b>
<p><b>New Cycle Tracks Provided</b></p> <p>There were no cycling schemes completed during the period of this report.</p>

### 3.10 LANDS

Our lands team are responsible for a range of lands related activities:

- The acquisition of land required for all road schemes
- Land ownership queries
- Abandonment of land no longer required for public use
- Negotiating agreement with landowners affected by road schemes and liaising with Lands and Property Services
- Dealing with Part 2 claims arising from road schemes
- Land transfers including the recent handover of car parks to the new councils

### 3.11 STRANGFORD FERRY 2014/2015 Progress Report

<b>SCHEME DESCRIPTION</b>
<p><b>GENERAL LEVEL OF SERVICE</b></p> <p>In general the ferry service has operated smoothly during the year 1 April 2014 to 31 March 2015. Of a total of 22,152 scheduled sailings, 156 were cancelled because of weather conditions (132 fog and 24 storm). A further 39 sailings were cancelled due to mechanical breakdowns and 62 because of industrial action. This represents an overall reliability of 98.84%.</p>
<p><b>NEW FERRY PROJECT</b></p> <p>A contract has been awarded to Cammell Laird, Liverpool and design of the new ferry is underway. Anticipated delivery date is August 2016.</p> <p>In preparation for the new ferry some works to the harbour and the Strangford slipway are planned for autumn 2015. While there may be some impact on passengers every effort will be made to keep disruptions to minimum.</p>
<p><b>NON-PAYMENT PROCEDURES</b></p> <p>Passengers unable to pay on board the ferry are issued with a non-payment report and are required to pay the full fare within one week of travel. Reminder letters have been issued to passengers with several outstanding fares. It is an offence under the Roads Order to travel with the intention of not paying the required fare. The Department will consider taking legal action to recover unpaid fares.</p>

### 4.0 NETWORK MAINTENANCE

Principal Engineer-

**Arnold Hamilton (3832 0001)**  
[transportni.southernmaintenance@drdni.gov.uk](mailto:transportni.southernmaintenance@drdni.gov.uk)



**Arnold is supported by the following staff in the Newry Mourne and Down WEST Section Office:**

**NEWRY MOURNE AND DOWN WEST**  
**1 Cecil Street, Newry, BT34 6AU**  
[newry.sectionoffice@drdni.gov.uk](mailto:newry.sectionoffice@drdni.gov.uk)



**SECTION ENGINEER – Cindy Noble (3025 3333)**

Cindy’s team is responsible for contacts with the public and elected representatives, highway inspections, resurfacing, responsive repairs, routine maintenance, winter gritting, road opening consents and licences, public liability claims and liaison with utility companies.

**ASSISTANT SECTION ENGINEER (WEST)**

**Enda Mc Ateer (4066 2466)**



**ASSISTANT SECTION ENGINEER (EAST)**

**Kevin McCartan (3025 3333)**





**Arnold is also supported by the following staff in the Newry Mourne and Down EAST Section Office:**

**NEWRY MOURNE AND DOWN EAST**  
**129 Sandcastle Road, Seaforde, BT30 8PR**  
[down.sectionoffice@drdni.gov.uk](mailto:down.sectionoffice@drdni.gov.uk)



**SECTION ENGINEER – Stephen Duffy (4481 2612)**

Stephen's team is responsible for contacts with the public and elected representatives, highway inspections, resurfacing, responsive repairs, routine maintenance, winter gritting, road opening consents and licences, public liability claims and liaison with service utility companies.

**ASSISTANT SECTION ENGINEER**

**Hugh Morgan (4481 2612)**



**Network Maintenance Support**  
**Robert Twinem (3832 0085)**  
[transportni.southernmaintenance@drdni.gov.uk](mailto:transportni.southernmaintenance@drdni.gov.uk)

Robert is based in our Divisional HQ at Marlborough House and has responsibility for Divisional Statistics and Controls Assurance, Costings, Financial bids and Allocations, Contracts and EI co-ordination, Verge planting Approvals and Streetworks infringements throughout Southern Division.



**4.1 CARRIAGEWAY RESURFACING - Completed in 2014/15**

**4.1.1 Asphalt Resurfacing – Completed 2014/15**

**Asphalt Resurfacing**

Asphalt resurfacing is more appropriate to heavily trafficked roads and junctions. It can have a life expectancy of up to 20 years. During the past year we have carried out a range of complementary improvements to kerbing, drainage, and the like on asphalt schemes to enhance the value and quality of the work.  
Approximately 153,150sq m were completed.

**B112 Derramore Road (Boiler Hill) Bessbrook**

This scheme which resurfaced 270m in length of Derramore Road, Bessbrook was completed in April 2014. The total area resurfaced was 1755sqm.



View to Derramore Rd after resurfacing    View along Derramore Road

**U5098 Ardmore Park, Whitecross**

The resurfacing of 235m in length of Ardmore Park, Whitecross was completed in April 2014. The total area resurfaced was 1360sqm.



**Asphalt Resurfacing**

**A28 Armagh Road Newry** **4000sq m**  
 A scheme to reconstruct/resurface 4000m in length of Armagh Road along with associated drainage works was completed in December 2014.

**A27 Tandragee Road Newry** **13500sq m**  
 A scheme to reconstruct/resurface 1800m in length of Tandragee Road along with associated drainage works was completed in December 2014.

**A28 Gosford Road, Newry** **5550 sq m**  
 A scheme to reconstruct/resurface 550m in length of Gosford Road along with associated drainage works was completed in June 2014.



Looking towards Crankey



Near Crankey

**C227 Blaney Road, Crossmaglen**  
**4500 sq m**

A scheme to reconstruct/resurface 750m in length of Blaney Rd Crossmaglen along with associated drainage works was completed in June 2014. The total area resurfaced was 4500sqm.



The road at the Loughross Road junction Looking back towards Crossmaglen

### Asphalt Resurfacing

**A25 Camlough Village** **4960 sq m**

A scheme to reconstruct/resurface 620m in length of Camlough Village along with associated footway, drainage and other accommodation works was completed in August 2014.



Looking to Belleek



Quarter Road looking to the roundabout

### Chapel Hill, Newry

This scheme resurfaced the road and upgraded the footway. It was completed in September along with Chapel Street.



Looking towards Chapel Road



**Asphalt Resurfacing**

**C333 Chapel Street, Newry** **6793 sq m**

A scheme to reconstruct/resurface 715m in length of Chapel Street, Newry along with associated footway and drainage works will be completed in September 2014.




Below the junction with Chapel Hill

Looking up hill from Boat Street

**C714 Green Road, Bessbrook** **1788 sq m**

A scheme to reconstruct/resurface 275m in length of Green Road, Bessbrook along with associated footway and drainage works was completed in August 2014.




Two views of the length of road after resurfacing works were completed

**Asphalt Resurfacing**

**B133 Newry Road, Forkhill** **6500 sq m**

A scheme to reconstruct/resurface 1000m in length of Newry Road, Forkhill along with associated drainage works will be completed in November 2014.




Looking towards Forkhill



Looking towards Silverbridge

**C329 Greenpark Road, Rostrevor** **4500 sq m**

A scheme to reconstruct/resurface 750m in length of Greenpark Road, Rostrevor along with associated drainage works will be completed in October 2014.



After



**C212 Mullaghbawn Village** **4200sq m**

A scheme to reconstruct/resurface 600m in length of Mullaghbawn Village along with associated drainage and footway works was completed in September 2014.

**C211 Forkhill Road Mullaghbawn** **6500sq m**

A scheme to reconstruct/resurface 1000m in length of Forkhill Road along with associated drainage works was completed in October 2014.

<b>Asphalt Resurfacing</b>	
<b>C211 Church Road Forkhill</b> A scheme to reconstruct/resurface 1600m in length of Church Road along with associated drainage works was completed in June 2014.	<b>10400sq m</b>
<b>A2 Newry Road Kilkeel</b> A scheme to reconstruct/resurface 700m in length of Newry Road along with associated drainage works was completed in September 2014.	<b>5950sq m</b>
<b>B135 Carran Road Crossmaglen</b> A scheme to reconstruct/resurface 400m in length of Carran Road along with associated drainage and footway works was completed in July 2014.	<b>2400sq m</b>
<b>A25 Newtown Road Belleek</b> A scheme to reconstruct/resurface 3652m in length of Newtown Road along with associated drainage and footway works was completed in Nov. 2014.	<b>23847sq m</b>
<b>B135 Cullyhanna Road Newtownhamilton</b> A scheme to reconstruct/resurface 1647m in length of cullyhanna Road along with associated drainage works was completed in October 2014.	<b>10047sq m</b>
<b>A25 Castlewellan Road Rathfriland</b> A scheme to reconstruct/resurface 1200m in length of Castlewellan Road along with associated drainage works was completed in November 2014.	<b>7800sq m</b>
<b>A25 Newry Road Rathfriland</b> A scheme to reconstruct/resurface 2300m in length of Rathfriland Road along with associated drainage works was completed in November 2014.	<b>16100 sq m</b>
<b>St Malaghy's Bungalows Killowen</b> A scheme to reconstruct/resurface 160m in length of St Malaghy's Bungalows along with associated drainage works was completed in February 2015.	<b>880sq m</b>
<b>Pious hill and Pious Hill Upper Annalong</b> A scheme to reconstruct/resurface 166m in length of Pious Hill along with associated drainage works was completed in February 2015.	<b>1348sq m</b>
<b>Crown Crescent Newry</b> A scheme to reconstruct/resurface 110m in length of Crown Crescent along with associated drainage and footway works was completed in Feb. 2015.	<b>707 sq m</b>
<b>Forestbrook Park Rostrevor</b> A scheme to reconstruct/resurface 52m in length of Forestbrook Park was completed in February 2015.	<b>286sq m</b>
<b>U6148 Upper Knockbarragh Rd Rostrevor</b> A scheme to reconstruct/resurface 1537m in length of Upper Knockbarragh Road was completed in February 2015.	<b>5380sq m</b>

<b>Asphalt Resurfacing</b>	
<b>Levalleyreagh Rd and Masters Lane Rostrevor</b>	<b>4080sq m</b>
A scheme to reconstruct/resurface 1200m in length of Levalleyreagh Road and Masters Lane was completed in February 2015.	
<b>Lower Knockbarragh Road Rostrevor</b>	<b>2898sq m</b>
A scheme to reconstruct/resurface 805m in length of Lower Knockbarragh Road was completed in February 2015.	
<b>Crowhill Road Newry</b>	<b>6278sq m</b>
A scheme to reconstruct/resurface 2025m in length of Crowhill Road was completed in February 2015.	
<b>U5082 Glen Rd Silverbridge</b>	<b>1780 sq m</b>
A scheme to reconstruct/resurface 413m in length of Glen Road was completed in February 2015.	
<b>Shinn Road Newry</b>	<b>16200sq m</b>
A scheme to reconstruct/resurface 3600m in length of Shinn Road was completed in Feb. 2015.	
<b>Dramalt Road Silverbridge</b>	<b>2223sq m</b>
A scheme to reconstruct/resurface 517m in length of Dramalt Road was completed in Feb. 2015.	
<b>A2 Dundrum Road, Clough</b>	<b>7300sqm</b>
This scheme involved resurfacing a section of roadway near McCaul's Tile Centre. It also incorporated new drainage and kerbing. It was completed in Jan 2015	
<b>A2 Dundrum Road, Newcastle</b>	<b>1980sqm</b>
This scheme involved resurfacing a section of roadway near the new holiday homes. It was completed in Sept 2014.	
<b>A2 Clough Road, Dundrum</b>	<b>4600sqm</b>
This scheme involved resurfacing a section of roadway near the GAA pitch. It also incorporated new drainage and kerbing. It was completed in June 2014.	
<b>A7 Belfast Road, Downpatrick</b>	<b>2190sqm</b>
This scheme involved resurfacing a section of roadway near Cotterhill Road junction. It was completed in Nov 2014.	
<b>A24 Newcastle Road, Loughinisland</b>	<b>16600sqm</b>
This scheme involved resurfacing a section of roadway from Ford's Estate to Brennan's Filling Station. It also incorporated new drainage and kerbing & a right turning lane. It was completed in June 2014.	

<b>Asphalt Resurfacing</b>	
<b>A21 Main Street, Saintfield</b>	<b>2160sqm</b>
This scheme involved resurfacing a section of street from Downpatrick Street to Belfast Road. It also incorporated lowering the street, new drainage and kerbing. It was completed in Aug 2014.	
<b>A21 Saintfield Road, Ballynahinch</b>	<b>7026sqm</b>
This scheme involved resurfacing a section of roadway near the lake. It also incorporated new drainage and it was completed in March 2015.	
<b>A25 Clough Road, Dundrum</b>	<b>14800sqm</b>
This scheme involved resurfacing a section of roadway from A'finn Cross Roads towards Clough. It also incorporated new drainage and kerbing. Feb 15	
<b>U6208 Shimna Road, Newcastle</b>	<b>4200sqm</b>
This scheme upgraded an uneven and cracked road surface. It also upgraded the adjacent footpaths and drainage system. It stretched from the Causeway Road to Bryansford Avenue. It was completed in May 2014.	
<b>U6202 Park Avenue, Newcastle</b>	<b>650sqm</b>
This scheme finally took place after waiting for utility work to be completed. It upgraded the carriageway and adjacent footpaths and drainage system and was completed in June 2014	
<b>U6001 Stream Street, Downpatrick</b>	<b>600sqm</b>
This scheme upgraded an uneven and cracked road surface. It stretched from St Patrick's Avenue to the roundabout. It was completed in June 2014	
<b>U6009 Fountain Street, Downpatrick</b>	<b>1200sqm</b>
This scheme upgraded an uneven and cracked road surface. It also upgraded the adjacent footpaths and drainage system. It stretched from Scotch Street to John Street. It started during the school holidays to minimise disruption and was completed in August 2014	
<b>U6900 Ardmeen Green Phase 1and 2, Downpatrick</b>	<b>600sqm</b>
These two schemes upgraded an uneven and cracked road surface on these two areas. They were both completed in February 2015	
<b>U6009 Benderg Avenue, Downpatrick</b>	<b>600sqm</b>
This scheme upgraded an uneven and cracked road surface in this cul-de-sac. It was completed in March 2015	
<b>B2 Downpatrick Road, Annacloy</b>	<b>3800sqm</b>
This scheme upgraded an uneven and cracked road surface on the outskirts of Annacloy village. It was completed in January 2015	
<b>U6800 Mary Street, Castlewellan</b>	<b>760sqm</b>
This scheme upgraded an uneven and cracked road surface on a section of the street. It was completed in January 2015	

#### 4.1.2 Bitumen Macadam Resurfacing– Completed 2014/15

##### Bitumen Macadam Resurfacing

Bitumen Macadam is a more flexible material than asphalt and is used on less busy rural roads. It is more suitable for the deformation and movement, which can be expected due to weaker underlying ground conditions. As with asphalt resurfacing, we carried out a range of other improvements to add value to the work.

##### **U378 Raffrey Road, Killyleagh. 3600sqm**

This scheme upgraded an uneven and cracked road surface. It also upgraded the drainage system. It stretched from our boundary at Kilcarn Road junction to house No 20. It was completed in December 2014

##### **U107 Drumnaconnagher Road, Crossgar 8000sqm**

This scheme upgraded an uneven and cracked road surface. It also upgraded the drainage system. It stretched from Drumaghlis Road junction to house No 61. It was completed in March 2015

##### **B176 Killough Road, Downpatrick 6000sqm**

This scheme upgraded an uneven and cracked road surface. It also upgraded the drainage system. It stretched from Grange Road junction towards Downpatrick. It was completed in September 2014.

##### **B176 Racecourse Hill, Downpatrick 650sqm**

This scheme upgraded the road surface from Stream Street to Killough Road. It was completed in June 2014.

##### **Marshallstown Cottages, Ballynoe 300sqm**

This scheme upgraded the road surface in this cul-de-sac off the Ballynoe Road. It was completed in July 2014.

### 4.1.3 Surface Dressing– Completed 2014/15

<b>Surface Dressing</b>		
Some roads were assessed as requiring Surface Dressing to prevent the ingress of water and restore the surface texture of the carriageway.		
Selected lengths of the following roads have been surface dressed :		
The total area programmed for treatment is almost exactly 1,000,000m <sup>2</sup>		
<b>Route No.</b>	<b>Road Name</b>	<b>Area (m<sup>2</sup>)</b>
U6009	Derrycraw Rd	9783
U6001	Ringclare Rd	9927
U6010	Smiths Rd	2768
C314	Donaghmore Rd	3568
B25	Kilbroney rd,Rostrevor	13800
C329	Ballyvalley Rd,M'Bridge	5000
U6127	Leitrim Rd	16155
U6182	Rath Rd,Warrenpoint	4869
U6222	Ballymageogh	7029
U6211	Leitrim Rd	10600
C315	School Rd,Ballymartin	7200
C315	Ballyveaghmore Rd	15233
U6146	Coyles Hill	6164
U6148	Upperknockbarragh Rd	5215
U6019	Brae Rd	8372
C330	Benagh Rd	2800
U6159	Betty's Hill Rd	5220
U6192	Greenan Lough Rd	8400
C333	Chapel Rd Newry	3600
C335	Ardaragh Rd	11000
C371	Greenan rd	7200
U6173	Lurgancanty Rd	4950
U6161	Lower Corrogs Rd	3600
U5302	Cargie Rd	7350
B135	Cloghoge Rd	6300
U5202	Carn Rd	10656
C224	Carrive Rd	14429
U5199	Ayallogue Rd	7006
C226	Cranny Rd	9180
U5400-U5344	Low Rd	12882
C226	Ballsmill Rd	9324
C227	Blaney Rd	13200
U5125	Outleckan Rd	8640

<b>Surface Dressing</b>		
<b>Route No.</b>	<b>Road Name</b>	<b>Area (m2)</b>
U5078	Old Armagh Rd	4730
U5158	Craigmore Rd	5320
C215	Drumnahunchin Rd	3225
U5036	Keadybeg Rd	8052
C213	Tullyherron Rd	10449
B133	Maytown Rd	12780
U5650	Ballinabee Rd	5085
C214	Kingsmills Rd	8160
U5654	Mill Rd	2806
U5061	Rathcarbery Rd	4371
U5010	Beside O,Briens	4170
U5008	Tunnell Rd	2976
U5654	High St	1155
U5253	Barkers Rd	9312
C200	Mullaghduff Rd	6479
C200	Anamaragh rd	13743
B7	Cahard Road	5589
C279	Cahard Road	17719
C282	Ballyculter Road	26594
C288	Ballykilbeg Road	10103
C289	Seaforde Road	6041
U1127	Claragh Road	4847
U117	Cloughley Road	4896
U120	Mountview Road	7811
U131	Cauley Pipe Road	4350
U146	Craig Road	11545
U152	Slievanisky Road	5277
U182	Laurelbank Road	3534
U191	Monlough Road	4207
U216	Planting Road	5152
U217	Drumena Road	5652
U227	Burren Road	10800
U246	Ballyclander Road	7622
U249	Ballystrew Road	5768
U318	Vianstown Road	20987
U337	Jericho Road	2697
U377	Templeburn Road	10136
U379	Ringdufferin Road	12682



<b>Surface Dressing</b>		
<b>Route No.</b>	<b>Road Name</b>	<b>Area (m2)</b>
U379	Ringhaddy Road	5690
U382	Tullycor Road	5980
U384	Drumnaconnell Road	4381
U529	Glenview Road	7228

## 4.2 CARRIAGEWAY RESURFACING

### 4.2.1 Asphalt Resurfacing – proposed 2015/2016

<b>ASPHALT RESURFACING</b>		
<p>It is proposed to strengthen the road foundation where necessary and improve the surface with asphalt on selected lengths of the roads listed below: Total area to be resurfaced is 20930 sq m</p>		
<b>Route No.</b>	<b>Road Name</b>	<b>Area Sq m</b>
C216-08	McKnights Hill	2205
U6292	Church St Newry	2025
C227	Dundalk Rd Crossmaglen	5400
U6293	Upper Damolly/Ashgrove Av	6300
A37	Concession Rd Culloville	5000
<p><b>A2 Main Street, Dundrum</b> This scheme will upgrade the road surface and improve texture, it will also upgrade the drainage system. The stretch is from Dunmore Construction's entrance to a point m south. It will be completed in May 2015.</p>		
<p><b>A7 Downpatrick Road, Crossgar</b> This scheme will upgrade the cracked road surface and it will also upgrade the drainage system. The stretch is from the Drakesbridge Road junction to a point m towards Downpatrick. It will be completed in May/June 2015.</p>		
<p><b>A 25 Bann Road, Castlewellan</b> This scheme involves raising the road and resurfacing to upgrade the road surface and it will also improve the drainage system. The stretch is adjacent to the Eurospar Supermarket. It will be completed in May/June 2015.</p>		
<p><b>B 175 Spa Road, Ballynahinch</b> This scheme will upgrade the cracked road surface and it will also upgrade the drainage system. The stretch is from house No 10 to the speed limit signs at Spa Village. It will be completed during the summer of 2015.</p>		




#### 4.2.2 Surface Dressing– proposed 2015/2016

<b>Surface Dressing</b>		
Roads which were regulated and resurfaced over the past few years will require sealing. These roads will take priority this year. The total area programmed for treatment is 386000m <sup>2</sup> , which equates to approximately 101 kms of carriageway. In addition, a number of roads will be strengthened using bitumen macadam, in preparation for surface dressing the following year.		
<b>ROUTE No.</b>	<b>LOCATION</b>	<b>Area Sq m</b>
U6163	Ryanstown Rd	4892
U6209	Billy's Road	5072
U6182-1	Rath Rd,Warrenpoint	4000
U6405-1	U6405	1590
C332-2	Clonallan Rd,W'Point	9207
U6204-1	Drumseck Rd,R'trevor	7080
U6175-1	Ballydesland Rd,Burren	9450
U6202-1	Moygannon Rd,W'Point	9100
U6178-1	Ballyrussell Rd	3223.5
U6231-1	Grove Rd,Annalong	5292
U6210-1	Ballinran Rd,Kilkeel	13335
C318-3	Tullyframe Rd,Attical	14490
C318-2	Tullyframe Rd,Attical	2295
U6402	Burren Rd	5000
U6179	Donaghaguy Rd	9508.5
U6126_01	New Line	5220
U6111_01	Ballygorian Road	8940
C330_01	Cross Road	7480
C331_01	Edentrumly Road	7623
U6165_01	Carmeen Road	5350
U6142_01	Carmeen Road	8662.5
C0335_02	Finnard road	1578.5
U6069_01	Old Newry Road	3717
U6069_01	Old Newry Road	5786
U6070_01	Ballykeel Road	4968
C321_02	Sandbank Road	10608.5
C229_02	Glen Road	9020
C339_03	Turmore Road	6900
U6074_01	Drumiller Road	7781
	Shinn School Rd	3850
U5269	Ballintemple Rd	14364
C0223	Slatequarry Rd	5085
C223	Finnegans Rd Cullyhanna	4120
U5455	Monog Rd	11550
C200-U5384	Kiltybane Rd	13644.8
U5459	Keady Rd	5754
U5424	Murrays Rd	4911.4
U5404	East Cloghoge Rd	3059.5
U5453	Foughilotra Rd	7605

U5364	Lough Rd, Silverbridge	4998
U5420	Carnally Rd	9000
U5318	Teer Rd	3000
U5301	Ballynarea Rd	4500
U5303	Bog Rd Cullyhanna	6300
C222	Skerriff Rd	4925
C203	Cortamlet Rd	4000
C200	Aughnagurgan Rd	4040
C213	Ballymoyer Rd	4224
U5123	Cold Brae Rd	7868
U5208	Glenmore Rd	14728
U5150	Carrowbane Rd	4234
C217	Chapel Rd	5740
U5011	Tunnel Rd	4368
U5056	Ballintate Rd	5739
B133	Maytown Rd	4500
C204	Lower Aghincurk Rd	8874
U5108	Divernagh Rd	9018
C203	Cortamlet Rd	4400
C276	Clay Road	2270
C288	Buckshead Road	518
C288	Buckshead Road	9094
C288	Buckshead Road	13054
C289	Drumcullen Road	170590
C289	Farranfad Road	8268
C304	Wateresk Road	10696
C325	Moneyscalp Road	13692
U0030	Riverside Road	7690
U0051	Ballymaglave Slip	435
U111	Glassdrumman Rd	11992
U116	Old Park Road	17325
U133	Drumanaghan Road	7718
U133	Drumanaghan Road	1661
U142	Ballybannon Road	8175
U144	Whitefort Road	9408
U183	Old Bridge Road	812
U329	Ballyaligan Road	7880
U330	Rathcunningham Rd	3555
U332	Clay Road	722
U332	Tullymacnous Road	1660
U343	Cluntagh Road	8434
U360	Drumgiven Road	4648

### 4.3 FOOTWAY RECONSTRUCTION

#### 4.3.1 Footway Reconstruction – Completed 2014/15

<b>SCHEME DESCRIPTION</b>	
<p>Reconstruction, resurfacing or minor repairs to footways have been carried out at the following locations:-</p>	
<p>U5338 Parkview, Newtowncloghoge 400 sq m</p> 	<p>U6235 Pious Hill, Valley Road 400 sq m</p> 
<p>B8 Main Street, Hilltown 615 sq m</p> 	<p>U6289 Cronin Park, Newry 140 sq m</p> 

<p>U6272 Slieveroe Park Upper 270 sq m</p> 	<p>U6504 Forestbrook Park, Rostrevor 245 sq m</p> 
<p>U5394 Forrest Park, Drumintee 400 sq m</p>	
<p>Other Locations include:</p>	
<p>St Malachy's Park, Kilkeel Raymond Kelly Park Newry Parkview Newtowncloghoge Boiler Hill Bessbrook Green Road Bessbrook</p>	<p>Tullybrannigan Rise, Newcastle Bernagh Green, Newcastle Castlewellan Road, Newcastle Mourne Green, Newcastle Frederick Street, Killyleagh Church Hill, Killyleagh Well Lane, Killyleagh</p>
<p>Belfast Road, Ballynahinch Lisburn Street, Ballynahinch Knowles Crescent, Ballynahinch Millbrook Drive, Ballynahinch Hillhead Crescent, Ballynahinch Windmill Avenue Ballynahinch Loughside Drive, Ballynahinch Drumcloon Walk, Downpatrick</p>	<p>Lecale Park, Downpatrick Benderg Drive, Downpatrick Springvale Drive, Downpatrick Westpoint, Killough Cloncool Crescent, Kilcoo Cumber Drive, Drumaness Main Street, Dundrum Benderg Park, Ballyhoran</p>

## 4.4 DRAINAGE MAINTENANCE

### 4.4.1 Drainage Maintenance Schemes Completed 2014/15

<b>DRAINAGE SCHEMES</b>			
<b>Route No.</b>	<b>Road Name</b>	<b>Route No.</b>	<b>Road Name</b>
A2	Annalong Road	A2	Killowen Road
A25	Blaney Road	A25	Camlough Road
A25	Castlewellan Road	A25	Newtown Road
A28	Armagh Road	B8	Castlewellan Road (2 Locs)
B8	Hilltown Road	B78	Markethill Road
B112	Bessbrook	B112	Derramore Road
B113	Newry Road, Forkhill	B134	Tullyah Road
C174	Green Rd	C174	Lissummon Road
C200	Annamare Road	C215	Crankey Road
C217	Keggal Road, Camlough	C217	Lower Foughill Rd, Jonesboro
C219	Cottage Road, Killeen	C219	Flagstaff Road, Newry
C221	Main Street, Forkhill	C223	Carrickrovaddy Road
C224	Crieve Road, Forkhill	C314	Carrigenagh Road
C315	Ballyveaghmore Road	C315	Church Road, Kilkeel
C315	Lonstone Road	C315	Longstone village
C316	Dunnaval Road	C318	Benagh Road
C318	Tullyframe Road	C319	Ballycoshone Road
C329	Greenpark Road	C329	Levalleyreagh Road
C332	Clonallon Road	C339	Old Newry Road
C341	Shinn Road	C371	Greenan Road
U5012	Tunnell Road	U5019	Ashtree Hill
U5082	Lurgana Road	U5108	Divernagh Road
U5123	Cold Brae Road	U5138	Tullygeasy Road
U5140	Monaghan Road	U5158	Craigmore Road
U5180	Gordon's Lane, Camlough	U5190	Conns Lane
U5193	Lower Bernish Road	U5193	Seavers Road
U5195	Upper Bernish Road	U5199	Ayallogue Road.
U5210	By Bennets	U5233	Barr Road
U5237	Courtney Road	U5260	Horseshoe Lane, Camlough
U5266	Ballard Road	U5268	Tasna Road, Killeavey
U5303	Bog Road, Cullyhanna	U5339	Parkview, Newtowncloghoge
U5341	Parkview, Newtwncloghge	U5342	Ellisholding Road
U5345	Low Road, Drumintee	U5361	Planting Road, Mullaghbawn

**DRAINAGE SCHEMES**

<b>Route No.</b>	<b>Road Name</b>	<b>Route No.</b>	<b>Road Name</b>
U5363	Cashel Road, Silverbridge	U5376	Cregganduff Rd, Crossmaglen
U5377	Drumill Road, Crossmaglen	U5387	Foughiletra Rd, Jonesborough
U539	Melrose Park	U5418	O'Callaghans Rd, Silverbridge
U5423	Cregganbane Road	U5424	Murrays Road
U5433	Captains Road, Forkhill	U5450	Loughross Rd, Crossmaglen
U5454	Trainor Crescent, Creggan	U5461	Coolderry Road
U5656	Cloughreagh	U5476	Annaghad Rd, Crossmaglen
U5656	J.F.K. Park	U6030	Gransha Road
U6032	Newline Road, Rathfriland	U6042	Castle Enigan Road
U6071	Ballykeel Road	U6076	Cloghanramer Road
U6081	Drumnascamp	U6126	New Line Road
U6160	Brady's Lane	U6163	Ryanstown Road
U6169	Tamnaharry Road	U6200	Sabbath Hill Rd, Ballymartin
U6202	Moygannon Road, W'point	U6211	Leitrim Road
U6230	Moneydarragh Road	U6248	Anthony's Road
U6290	Ballyholland Road	U6452	Ballynaclosa Rd, Tullydonel
U6539	Needham Court, Kilkeel	U6539	Spelga Park, Kilkeel
61 Comber Road, Killyleagh		The Nursery, Killyleagh	
Church Hill, Killyleagh		Scaddy Road, Crossgar	
Derryboye Road, Crossgar		53 -55 Killyleagh Road, Crossgar	
Station Park, Crossgar		Annacloy Road, Downpatrick	
Ballytrustan Road, Downpatrick		Oakland Close, Downpatrick	
Bishop's Court Road, Downpatrick		2-4 Knocknashina Road, Downpatrick	
9 Ardbucan, Downpatrick		Struell Wells Road, Downpatrick	
Killough Road, Downpatrick		Benderg Park, Downpatrick	
48 Cumber Road, Drumaness		Drumaness Village	
Park Avenue, Newcastle		Ceadar Heights, Newcastle	
109 Tullybrannigan Road, Newcastle		Bernagh Green, Newcastle	
Castlewellan Road, Newcastle		Shimna Vale, Newcastle	
Drumgiven Road, Saintfield		Old Coach Way, Saintfield	
Teconnaught Road, Kilmore		152 Loughinisland Road, Annacloy	
Tullynacree Road, Annacloy		Clonvarnaghan Village	
Strangford Road, Ballyhornan		48 Dundrine Road, Castlewellan	
9 Churchtown Road, Strangford			

#### 4.4.2 Drainage Maintenance Schemes Proposed 2015/16

<b>DRAINAGE SCHEMES</b>			
Maintenance contracts to repair or replace drainage systems will be undertaken at the following locations and as required during 2015/2016			
<b>Route No</b>	<b>Name</b>	<b>Route No</b>	<b>Name</b>
B30	Crossmaglen Road	B30	Newry Road
B79	Fathom Line, Newry	B134	Tullyah Road
C200	Annamare Road, Crossmaglen	C200	Aughnagurgan Road
C225	Glassdrumman Road, Crossmaglen	C339	Turmore Road
C365	Lurganconary Road	U5000	Cornagrally Road
U5082	Lurgana Road	U5262	Ballynalack Lane, Camlough
U5294	Killeen School Road, Killeen	U5315	Corliss Road, Crossmaglen
U5361	Planting Road, Silverbridge	U5363	Cashel Road, Silverbridge
U5364	Lough Road, Silverbridge	U5455	Monog Road, Crossmaglen.
U5457	Liscalgot Road, Crossmaglen.	U5460	Larkins Road, Crossmaglen
U5461	Coolderry Road, Crossmaglen.	U5650	Hill Street
U6023	Near 27 Finnard Road (new line)	U6175	Ballydesland Road
U6215	Aughnahoorry Road	U6233	Valley Road
Beechfield Park, Newcastle		Central Promenade, Newcastle	
Myra Road, Downpatrick		Churchtown Road, Downpatrick	
Tullywest Road, Saintfield		Main Street, Ballynahinch	
Newcastle Road, Drumaness		Demense Road, Seaforde	



## 4.5 ROUTINE MAINTENANCE

### 4.5.1 Routine Maintenance Schemes completed 2014/15

#### VERGE MAINTENANCE

Maintenance contracts to repair verge slips have been carried out as necessary during 2013/2014.

#### C333 Chapel Road, Newry



The repair from the roadside

e back of the road edge after repair

Route No.	Road Name	Route No.	Road Name
A25	Finnard Road, Rathfriland	B7	Bridge Road
B8	Castlewellan Road	B 25	Rathfriland Road, Hilltown
B30	Hall Road	C321	Sandbank Road, Hilltown
U 5302	Cargie Road		

### 4.5.1 Routine Maintenance Schemes proposed 2015/16

#### VERGE MAINTENANCE

Maintenance contracts to repair verge slips will be carried out at locations below and as necessary throughout 2014/2015.

Route No.	Road Name	Route No.	Road Name
B34	Mowhan Road	C200	Aughnagurgan Road
U5123	Cold Brae Road		

## 4.6 STREET WORKS

### 4.6.1 Schemes proposed 2015/2016

<b>SCHEME DESCRIPTION</b>		
<p>The following Major Utility works are planned this year in the District. Notifications can relate to works carried out by BT, NIE, NIW, BGE, and Firmus Energy, as well as notifications relating to our own resurfacing works. We regularly carry out inspections of reinstatements made by utility companies ensure they comply with the relevant standards.</p>		
<b>NI Water – Watermains</b>		
<b>Location</b>	<b>Location</b>	<b>Location</b>
Aileen Terrace Silverbridge Road Derrybeg Cottages Railway Road Ninemile Road Jockey's Brae Ashgrove Road Francis Street Ballagh Road Low Road Clonlum Road Sturgan Road Newtown Road	Cottage Road Riverside Crescent Murrays Road Lurgancullenboy Road Mountain Road Church Road Divernagh Road Forkhill Road Glenvale Road Georges Lane Derrybeg Cottages Greenfield Park Ballyholland Park	Dublin Road Aghincurk Road Kildare Street The Mall Finnegan's Road Beechmount Park Cargie Road Hill Street Marcus Street Ballygorian Road Kinney's Mill Road Brookeville Crescent Ellisholding Road Seavers Road
<b>NI Water - Sewers</b>		
<b>Location</b>	<b>Location</b>	<b>Location</b>
Finegans Road. Saint Jude's Gardens Shore Road Bridge Street	Church Street Greenpark Road Mary Street	St Colman's Gardens Warrenpoint Road Water Street Main Road
<b>Firmus Gas - Gas Mains</b>		
<b>Location</b>	<b>Location</b>	<b>Location</b>
Hennessy Park Greenfield Park John Mitchell Street James Street Mount Pleasant Henry Street Ardmaine Gardens Windmill Road The Gardens	Brookville Crescent Cloughareven Doran's Hill Chapel Hill Courtney Hill Watson's Road O'Neill Avenue	Toragh Park Carnagh Park Commons Way Upper Chapel Street Chapel Road Church Road Barley Lane

## 5.0 STREET LIGHTING

**Principal Engineer- Reynold Nicholson (3832 0001)**

[reynold.nicholson@drdni.gov.uk](mailto:reynold.nicholson@drdni.gov.uk)



**Reynold is supported by the following staff:**

### SECTION ENGINEER

Jack Robinson  
Street Lighting Depot  
Carn Industrial Estate  
Portadown

[jack.robinson@drdni.gov.uk](mailto:jack.robinson@drdni.gov.uk)



## 5.1 Street Lighting Maintenance

Due to budget constraints we have had to curtail maintenance and our external maintenance contractors have been stood down.

TransportNI's own Operations & Maintenance Street Lighting staff will deal with street lighting faults in priority order i.e. firstly - faults that are posing an electrical or structural hazard, secondly - group outages, and thirdly – group day burners. Unfortunately, at present single outages and single day burners are a lower priority and may take some time to be repaired as they are being dealt with in the most efficient order which will usually be by inspection route. This will mean considerable delays for the repair of individual street lights.

## 5.2 Street Lights on Private Streets Developments

In the financial year 2014/15, the Street Lighting Section accepted responsibility for 149 street lights on Private Streets Developments in the Newry Mourne and Down District Council area.

## 5.3 Lighting Schemes

### 5.3.1 Lighting Schemes completed 2014/2015

Work is in progress or has been completed (as indicated on the following schemes:

<i><b>Town</b></i>	<i><b>Location</b></i>	<i><b>No of Lights</b></i>	<i><b>Type of Scheme</b></i>	<i><b>Progress</b></i>
Bessbrook	Boiler Hill Road	5	Infill	Complete
Camlough	Camlough Village	19	Relighting	Complete
Mayobridge	St Anne's Park	20	Relighting	In Progress
Newry	Barcroft Park	6	Relighting	Complete
Newry	Camlough Road Phase 2	35	Relighting	Complete
Newry	Flagstaff Road	11	Relighting	Complete
Newry	Hawthornhill Estate	32	Relighting	Complete
Newry	Mount Pleasant Phase 1	42	Relighting	In Progress
Newry	North Street Underpass	19	Relighting	In Progress
Newry	Nursery Drive	22	Relighting	In Progress
Ballynahinch	Cumber Dr/Grove	20	Relighting	Complete
Castlewellan	Mourne Pk/Gardens	15	Relighting	Complete
Downpatrick	Cloonagh Rd/Brannish Road	24	Relighting	Complete
Downpatrick	Fountain Street	7	Relighting	Complete
Dundrum	Church Av Phase 2	6	Relighting	Complete
Killyleagh	Annsfield Estate	34	Relighting	Complete
Newcastle	Ballaghbeg/Ardkeel Pk	40	Relighting	Complete
Newcastle	Castlewellan Road Phs 2 and 3	31	Relighting	Complete
Saintfield	Main St (Phase 1)	4	Relighting	Complete
Saintfield	Rowallen Dale	10	Relighting	Complete

### 5.3.2 Lighting Schemes proposed 2015/16

<i><b>Town</b></i>	<i><b>Location</b></i>	<i><b>Scheme Type</b></i>
Ballymartin	St Joseph's Bungalows	Relighting
Rostrevor	Carrickbawn	Relighting
Downpatrick	Braeside Drive/Av	Relighting
Ardglass	Whiterock/Bayview Drive	Relighting
Saintfield	Crossgar Road	Relighting

### 6.0 NETWORK PLANNING

Development Control and Private Streets functions are based in Rathkeltair House and fall within the responsibility of Principal Chartered Engineer Reynold Nicholson. Rowan Laughlin, Shane Grant and Liam Rice head up the teams dealing with the planning application consultation process and Private Streets sites.

**Principal Engineer- Reynold Nicholson (3832 0001)**  
[reynold.nicholson@drdni.gov.uk](mailto:reynold.nicholson@drdni.gov.uk)



**Reynold is supported by the following staff:**

**Senior Planning Engineer – Rowan Laughlin (4461 8058)**  
[rowan.laughlin@drdni.gov.uk](mailto:rowan.laughlin@drdni.gov.uk)

Rowans team covers the Newry& Mourne and Down Council Area and also the Ards and North Down Council Area.



**Planning Engineer – Shane Grant (4461 8134)**  
[shane.grant@drdni.gov.uk](mailto:shane.grant@drdni.gov.uk)



**Planning Engineer – Liam Rice (4461 8129)**  
[liam.rice@drdni.gov.uk](mailto:liam.rice@drdni.gov.uk)



## 6.1 DEVELOPMENT CONTROL: PLANNING APPLICATIONS

In carrying out their planning functions Councils have a duty to consult a range of statutory bodies. Transport NI on behalf of the Department for Regional Development has entered into an agreement with each Council to provide views and advice on roads and transportation related issues.

Transport NI in its consideration of planning applications, takes into account aspects of development which could prejudice traffic progression and safety in terms of junction capacity, access arrangements, parking standards and provision, road width, radii, gradients, drainage and sight lines. A detailed Transport Assessment may be required for larger developments where potential traffic impact may extend to road junctions some distance from the development site and where infrastructure improvements are deemed necessary as mitigation.

In the case of housing developments, the Private Streets (NI) Order 1980 is applied if a planning application includes streets which are to become public and maintainable by the Department. Development Control/Private Streets Section determines the area to be adopted, arranges for the calculation of the bond amount, supervises construction of the streets and, following satisfactory completion by the developer, completes the process for adoption into the public road network. Should the developer not complete the streets, Transport NI can take appropriate enforcement action under the Private Streets Order to ensure satisfactory completion of works funded by the bond.

Other associated Development Control work includes participating in pre-application, planning meetings, presentation of evidence at Planning Appeals and the approval of accesses onto the public road under Article 80 of the Roads (NI) Order 1993. The Section also deals with responses to property certificate enquiries.

During the reporting period from 1 April to 31 March 2015 within the Newry, Mourne and Down District Council Area, our Development Control Team dealt with:

- Planning Applications: 1059
- Pre Planning Enquiries: 22
- Planning Appeals: 7

Of the above applications, 16 were housing developments involving the Private Streets (NI) Order 1980:

Major applications included:

- Greencastle Ferry
- GAA Pitches – Drumsesk Road, Rostrevor
- Community Treatment Health Care Centre, Newry
- Newry North Business Park
- Watsons Road, Housing Development, Newry
- Housing Developments, Saul Road, Downpatrick

## 6.2 PRIVATE STREETS: ADOPTIONS

During the reporting period Transport NI has adopted a total of 4,744 metres of carriageway, 1,217 metres of footway into the publicly maintained network. These stretches fall within the following developments and excludes adoptions associated with enforcements.

- The Meadows, Downpatrick
- Cotters Mill, Mcshanes Road, Bessbrook
- Sawhill Park, Glassdrumman Road, Annalong
- Moorlands Kilkeel
- The Ferns, Rostrevor Road, Hilltown
- Elmgrove, Rathfriland Road Newry
- Cairn Hill, Newry,
- Ravensglen, Chancellors Road, Newry
- Lisbane Park, Mayobridge
- Ard Na Cluna, Warrenpoint
- Woodvale, Derrymore Road, Bessbrook
- Darragh Court, Annalong
- Tobar Blinne, Chapel Road, Meigh
- Peters Place, Newry
- Carraigway Cullyhanna

## 6.3 PRIVATE STREETS: ENFORCEMENT

Private Streets Section endeavours to work with developers to ensure that streets are brought up to an adoptable standard without delay. If the developer does not complete the street works or ceases trading and house building and occupancy is sufficiently advanced, then Transport NI will take enforcement action and appoint its own contractor, recovering the costs of works from the road bond under Article 13 and 15 of the Private Streets (NI) Order 1980. The Section also takes action against developers who fail in their responsibility to take out a bond.

During the reporting period Transport NI completed and adopted street works within the following developments through such enforcement under the provisions of the Private Streets (NI) Order 1980:

- The Links, Ballykinlar
- Rowley Meadows, Newcastle
- Aldergrange, Darragh Cross
- Drumhill Park, Drumaroad, Castlewellan
- The Old Mill, Wateresk Road, Maghera
- Lisburn Road Ballynahinch



Transport NI is currently carrying out works on the following sites through enforcement action:

- Labyrinth Cottages, Spa, Ballynahinch
- Tollymore Brae, Newcastle

It is anticipated that in the next 12 months enforcement action will be initiated in respect of:

- Benmore Court, Newry
- Cloughan Court, Camlough
- Glen Mullan, Newry
- The Mill, Saintfield
- Commons Road, Ballykinlar
- Cashel Hill, Clonvaraghan, Castlewellan

#### **6.4 ROADS (NI) ORDER 1993, ARTICLE 80**

Article 80 applies to new vehicular accesses on to unclassified roads or agricultural accesses on to classified and unclassified roads. It covers proposals such as new driveway entrances and dropped kerbs and is used where planning permission is not required.

During the reporting period Transport NI dealt with 26 Article 80 applications.

#### **6.5 ABANDONMENTS**

Abandonments of public rights-of-way such as sections of adopted roads and Footways are procedures separate from the planning process. These involve public consultation exercise which informs Transport NI's decision to approve or reject any application.

The following abandonments have taken place within the reporting period.

<b>Location</b>	<b>Operative Date</b>	<b>Length/Area</b>
Meadowlands, Downpatrick	8 October 2014	352 sq m (Road & Footway)
Ballygowan Road, Saintfield	3 December 2014	730.1 sq m (Road)
Nicholsons Court, Newry	18 June 2014	27 sq m (Superseded Road)
Latt Road, Jerrettspass	3 December 2014	945 sq m (Road)