



Comhairle Ceantair  
**an Iúir, Mhúrn  
agus an Dúin**  
**Newry, Mourne  
and Down**  
District Council

October 19th, 2016

**Notice Of Meeting**

You are requested to attend the Council meeting to be held on **Monday, 24th October 2016** at **6:00 pm** in **Downshire Civic Centre**.

# Agenda

- 1 **Apologies and Chairperson's Remarks**
- 2 **Declarations of Interest**
- 3 **Transport NI - Autumn Presentation (copy attached)**

*Southern Division - Interim Council Report 2016 - Newry Mourne and Down.pdf*

Page 1

# Invitees

Cllr Terry Andrews	<a href="mailto:terry.andrews@downdc.gov.uk">terry.andrews@downdc.gov.uk</a>
Cllr Naomi Bailie	<a href="mailto:naomi.bailie@nmandd.org">naomi.bailie@nmandd.org</a>
Cllr Patrick Brown	<a href="mailto:patrick.brown@nmandd.org">patrick.brown@nmandd.org</a>
Cllr Robert Burgess	<a href="mailto:robert.burgess@nmandd.org">robert.burgess@nmandd.org</a>
Cllr Stephen Burns	<a href="mailto:stephen.burns@downdc.gov.uk">stephen.burns@downdc.gov.uk</a>
Cllr Pete Byrne	<a href="mailto:pete.byrne@nmandd.org">pete.byrne@nmandd.org</a>
Mr Gerard Byrne	<a href="mailto:gerard.byrne@nmandd.org">gerard.byrne@nmandd.org</a>
Cllr Michael Carr	<a href="mailto:michael.carr@newryandmourne.gov.uk">michael.carr@newryandmourne.gov.uk</a>
Mrs Dorinnia Carville	<a href="mailto:dorinnia.carville@nmandd.org">dorinnia.carville@nmandd.org</a>
Cllr charlie casey	<a href="mailto:charlie.casey@newryandmourne.gov.uk">charlie.casey@newryandmourne.gov.uk</a>
Cllr William Clarke	<a href="mailto:william.clarke@downdc.gov.uk">william.clarke@downdc.gov.uk</a>
Cllr Patrick Clarke	<a href="mailto:patrick.clarke@downdc.gov.uk">patrick.clarke@downdc.gov.uk</a>
Cllr Garth Craig	<a href="mailto:garth.craig@downdc.gov.uk">garth.craig@downdc.gov.uk</a>
Cllr Dermot Curran	<a href="mailto:dermot.curran@downdc.gov.uk">dermot.curran@downdc.gov.uk</a>
Mr Eddy Curtis	<a href="mailto:eddy.curtis@newryandmourne.gov.uk">eddy.curtis@newryandmourne.gov.uk</a>
Cllr Laura Devlin	<a href="mailto:laura.devlin@downdc.gov.uk">laura.devlin@downdc.gov.uk</a>
Ms Louise Dillon	<a href="mailto:louise.dillon@newryandmourne.gov.uk">louise.dillon@newryandmourne.gov.uk</a>
Cllr Sean Doran	<a href="mailto:sean.doran@newryandmourne.gov.uk">sean.doran@newryandmourne.gov.uk</a>
Cllr Sinead Ennis	<a href="mailto:sinead.ennis@nmandd.org">sinead.ennis@nmandd.org</a>
Cllr Cadogan Enright	<a href="mailto:cadogan.enright@downdc.gov.uk">cadogan.enright@downdc.gov.uk</a>
Cllr Gillian Fitzpatrick	<a href="mailto:gillian.fitzpatrick@newryandmourne.gov.uk">gillian.fitzpatrick@newryandmourne.gov.uk</a>
Mr Patrick Green	<a href="mailto:patrick.green@downdc.gov.uk">patrick.green@downdc.gov.uk</a>
Cllr Glyn Hanna	<a href="mailto:glyn.hanna@nmandd.org">glyn.hanna@nmandd.org</a>
Mr Liam Hannaway	<a href="mailto:liam.hannaway@nmandd.org">liam.hannaway@nmandd.org</a>
Cllr Valerie Harte	<a href="mailto:valerie.harte@newryandmourne.gov.uk">valerie.harte@newryandmourne.gov.uk</a>
Cllr Harry Harvey	<a href="mailto:harry.harvey@newryandmourne.gov.uk">harry.harvey@newryandmourne.gov.uk</a>
Cllr Terry Hearty	<a href="mailto:terry.hearty@newryandmourne.gov.uk">terry.hearty@newryandmourne.gov.uk</a>
Cllr David Hyland	<a href="mailto:david.hyland@newryandmourne.gov.uk">david.hyland@newryandmourne.gov.uk</a>
Miss Veronica Keegan	<a href="mailto:veronica.keegan@downdc.gov.uk">veronica.keegan@downdc.gov.uk</a>
Cllr Liz Kimmins	<a href="mailto:liz.kimmins@nmandd.org">liz.kimmins@nmandd.org</a>
Cllr Mickey Larkin	<a href="mailto:micky.larkin@nmandd.org">micky.larkin@nmandd.org</a>
Mr Michael Lipsett	<a href="mailto:michael.lipsett@downdc.gov.uk">michael.lipsett@downdc.gov.uk</a>
Cllr Kate Loughran	<a href="mailto:kate.loughran@newryandmourne.gov.uk">kate.loughran@newryandmourne.gov.uk</a>
Cllr Jill Macauley	<a href="mailto:jill.macauley@nmandd.org">jill.macauley@nmandd.org</a>
Mrs Regina Mackin	<a href="mailto:regina.mackin@newryandmourne.gov.uk">regina.mackin@newryandmourne.gov.uk</a>
Cllr Kevin Mc Ateer	<a href="mailto:kevin.mcateer@nmandd.org">kevin.mcateer@nmandd.org</a>
Mr Johnny Mc Bride	<a href="mailto:johnny.mcbride@newryandmourne.gov.uk">johnny.mcbride@newryandmourne.gov.uk</a>
Colette McAteer	<a href="mailto:collette.mcateer@newryandmourne.gov.uk">collette.mcateer@newryandmourne.gov.uk</a>
Cllr Declan McAteer	<a href="mailto:declan.mcateer@newryandmourne.gov.uk">declan.mcateer@newryandmourne.gov.uk</a>
Eileen McParland	<a href="mailto:eileen.mcparland@newryandmourne.gov.uk">eileen.mcparland@newryandmourne.gov.uk</a>
Catrina Miskelly	<a href="mailto:catrina.miskelly@downdc.gov.uk">catrina.miskelly@downdc.gov.uk</a>

Cllr Roisin Mulgrew	<a href="mailto:roisin.mulgrew@nmandd.org">roisin.mulgrew@nmandd.org</a>
Cllr Mark Murnin	<a href="mailto:mark.murnin@nmandd.org">mark.murnin@nmandd.org</a>
Mrs Aisling Murray	<a href="mailto:aisling.murray@newryandmourne.gov.uk">aisling.murray@newryandmourne.gov.uk</a>
Cllr Barra O Muiri	<a href="mailto:barra.omuiri@nmandd.org">barra.omuiri@nmandd.org</a>
Cllr Pol O'Gribin	<a href="mailto:pol.ogribin@nmandd.org">pol.ogribin@nmandd.org</a>
Mr Canice O'Rourke	<a href="mailto:canice.orourke@downdc.gov.uk">canice.orourke@downdc.gov.uk</a>
Ms Patricia Oakes	<a href="mailto:patricia.oakes@downdc.gov.uk">patricia.oakes@downdc.gov.uk</a>
Cllr Brian Quinn	<a href="mailto:brian.quinn@newryandmourne.gov.uk">brian.quinn@newryandmourne.gov.uk</a>
Cllr Henry Reilly	<a href="mailto:henry.reilly@newryandmourne.gov.uk">henry.reilly@newryandmourne.gov.uk</a>
Ms Alison Robb	<a href="mailto:Alison.Robb@downdc.gov.uk">Alison.Robb@downdc.gov.uk</a>
Cllr Michael Ruane	<a href="mailto:michael.ruane@newryandmourne.gov.uk">michael.ruane@newryandmourne.gov.uk</a>
Cllr Gareth Sharvin	<a href="mailto:gareth.sharvin@downdc.gov.uk">gareth.sharvin@downdc.gov.uk</a>
Cllr Gary Stokes	<a href="mailto:gary.stokes@nmandd.org">gary.stokes@nmandd.org</a>
Sarah Taggart	<a href="mailto:sarah-louise.taggart@downdc.gov.uk">sarah-louise.taggart@downdc.gov.uk</a>
Cllr David Taylor	<a href="mailto:david.taylor@newryandmourne.gov.uk">david.taylor@newryandmourne.gov.uk</a>
Caroline Taylor	<a href="mailto:Caroline.Taylor@downdc.gov.uk">Caroline.Taylor@downdc.gov.uk</a>
Cllr Jarlath Tinnelly	<a href="mailto:jarlath.tinnelly@nmandd.org">jarlath.tinnelly@nmandd.org</a>
Cllr John Trainor	<a href="mailto:john.trainor@nmandd.org">john.trainor@nmandd.org</a>
Cllr William Walker	<a href="mailto:william.walker@nmandd.org">william.walker@nmandd.org</a>
Mrs Marie Ward	<a href="mailto:marie.ward@downdc.gov.uk">marie.ward@downdc.gov.uk</a>

October 2016

1

# SOUTHERN DIVISION

## Autumn (Interim) Report to Newry, Mourne and Down District Council



<b>Contents</b>	<b>Page No.</b>
<b>Foreword</b>	3
<b>Senior Management Structure</b>	4
<b>Southern Division</b>	5
<b>Section 1 - Strategic Road Improvements</b>	6
1.1 A24 Ballynahinch Bypass	7
1.2 A2 Newry Southern Relief Road	8
1.3 A7 Rowallane to Dorans Rock	8
1.4 Maintenance of Structures	9
<b>Section 2 - Network Maintenance</b>	11
2.1 Network Maintenance	15
<b>Section 3 - Network Development</b>	23
3.1 Network Development	24
<b>Section 4 - Network Planning</b>	36
4.1 Development Control	37
4.2 Private Streets	38
4.3 Strangford Ferry	39
4.4 Streetlighting	40

## Foreword

Newry, Mourne and Down District Council  
TransportNI Report - October 2016

3

### **Chairperson and Councillors Newry, Mourne and Down District Council**

I have pleasure in submitting the Autumn Interim Report on TransportNI work in the Newry, Mourne and Down District Council area.

Southern Division covers the three Council areas shown on page 5 of this report. It is one of four Divisions, each of which manages the road network, commissions new works, and is the contact point for road users and public representatives.

This report updates the proposed work for 16/17 detailed in the spring annual report including additional schemes that have been added as a result of increased funding since our last meeting.

In the report the information from the Spring annual report is retained in black text and the autumn updates are provided in red for ease of reference.

I hope that you find this report informative and I, along with Cindy Noble and Stephen Duffy (Section Engineers), look forward to meeting the Council.

**Simon Richardson**  
**Divisional Manager**

## Southern Division - Senior Management Structure



**Simon Richardson**  
Divisional Manager

TransportNI wishes to build upon the good working relationships it has with Council Members and Officers. The Senior Management Team is listed below, however day to day matters should be raised with the relevant Senior Engineers whose details are listed at the start of each section.



**Eoghan Daly**  
Strategic Road Improvements (SRI) Manager

Major works schemes (>£1.5M)



**Arnold Hamilton**  
Network Maintenance Manager

Maintenance of existing road network



**James Kelly**  
Network Development Manager

Improvements and minor works



**Reynold Nicholson**  
Network Planning Manager

Regulation of new additions to the network



## Southern Division

Newry, Mourne and Down District Council  
TransportNI Report - October 2016

5

Southern Division is one of four Client Divisions within TransportNI. It spans the local Council areas of Armagh City Banbridge and Craigavon, Newry Mourne and Down and Ards and North Down (see map below).



In Southern Division we are responsible for approximately 8000km of public road together with 1300 bridges, 250 sets of traffic lights, 81,000 streetlights and over 4000 illuminated signs and bollards. We carry out functions under the headings:-

- **Strategic Road Improvements** – Major capital projects (>£1.5M) on Key Transport Links.
- **Network Maintenance** – Maintenance of the existing network. Maintenance activities include Resurfacing, Surface Dressing and drainage works as well as grass cutting, gully emptying, patching, embankment/verge maintenance, fencing and provision of the Winter Service
- **Network Development** - Improvements to the existing network to improve safety and traffic progression including Minor Works and Local Transport & Safety Measures.
- **Network Planning** - Regulation of additions to the network proposed by developers

Transport NI  
Southern Division HQ  
Marlborough House  
Central Way  
CRAIGAVON

Tel: 0300 200 7892  
E-mail: [transportni.southern@infrastructure-ni.gov.uk](mailto:transportni.southern@infrastructure-ni.gov.uk)  
Out of Hours Tel: 028 3752 9500

# SECTION 1

## STRATEGIC ROAD IMPROVEMENTS

### Strategic Road Improvements Manager: Eoghan Daly

Eoghan is supported by the following staff



**Brian McClelland**  
Strategic Road Improvements  
Marlborough House  
Central Way  
Craigavon  
BT641AD

Tel: 0300 200 7892  
E-mail: [transportni.southern@infrastructure-ni.gov.uk](mailto:transportni.southern@infrastructure-ni.gov.uk)



**Neville Dynes**  
Strategic Road Improvements  
Marlborough House  
Central Way  
Craigavon  
BT641AD

Tel: 0300 200 7892  
E-mail: [transportni.southern@infrastructure-ni.gov.uk](mailto:transportni.southern@infrastructure-ni.gov.uk)



## 1.2 Newry Southern Relief Road

This proposal is to provide a strategic road improvement south-east of Newry to link the A1 Belfast to Dublin Road, a key strategic route, to the A2 Warrenpoint dual-carriageway, a trunk road leading to Warrenpoint Port.

Development work is ongoing to progress the Stage 1 Preliminary Options Scheme Assessment, which will identify the best performing options to take forward for further development and subsequent identification of a Preferred Option. It is expected that the Stage 1 Assessment should be completed in Autumn 2016.

Continued development of the proposal, which may be eligible for EU funding, remains subject to the approval of the business case clearing the statutory procedures, and funding being made available.

**Autumn Update:** As a result of the ongoing design development process and feedback received through the consultation process an additional corridor has been identified.

It is considered necessary to carry out further consultation to ensure all relevant information relating to this corridor is received. This is expected to delay the completion of the Stage 1 assessment from Autumn to Winter 2016.

## 1.3 A7 Rowallane to Doran's Rock

Design work for this proposal is complete and the Environmental Assessment for the proposal is expected to be complete by early summer.

Land, much of which is agricultural but includes some that is residential, will be required from adjacent land owners and a Vesting Order will be required. The next stage of development work will include taking the proposal through the statutory procedures.

Progression of the scheme remains subject to the clearing these statutory procedures, and funding being made available to the Department.

**Autumn Update:** Design work and the Environmental Assessment for this proposal are now substantially complete. A series of meetings with impacted landowners will be arranged in the coming months to discuss the extent of land required.

## 1.4 Maintenance of Structures

The Structures Section manages the 1,277 bridges and culverts with a span of 1.8m and greater within the Division of which there are 513 of these structures in the Newry, Mourne & Down District Council Area. Smaller structures are managed by the local TNI Section Offices.

### Structures - Strengthening Schemes Proposed within 2016/2017

Bridge No.	Name
50063	<b>Kilmore Bridge</b> , Crossgar (Replacement)
40713	<b>Blaney Road Bridge</b> , Newtownhamilton
40714	<b>Dundalk Road Bridge</b> , Newtownhamilton
50352	<b>Castlewellan Road Bridge</b> , Clough
40132	<b>Derrywilligan Bridge</b> (Mullaghglass Road), Newry
40547	<b>'McLoughlin's Bridge'</b> , Cavan Road, Rathfriland
40603	<b>Kilmonaghan Road Railway Bridge</b> , Mullaghglass, Newry

**Autumn Update:** Additional structure proposed

40761 **Ballygowan Road Bridge**, Comber

Structures Strengthening schemes planned within NM&D,DC in 2016/17, approx. value = £550K

All other bridges are inspected routinely.

This generates an ongoing programme of strengthening/repairs to bridges and other structures.

### Structures - Maintenance Schemes Proposed within 2016/2017

**Autumn Update:** The following schemes have been added to our Structures Maintenance programme

40723	Donnelly's Bridge, Cullyhanna
40433	Derryleckagh Bridge, Mayobridge
41540	Needham Bridge, Newry
50116	Quoile Bridge, Old Belfast Road, Downpatrick
40161	Craggorey Bridge, Rathfriland Road, Newry
	Retaining wall at 10 Newtown Road, Camlough

## Vehicle Restraint Systems Proposed for 2016/2017

Route No	Name	Description
A2	<b>Warrenpoint Dual Carriageway</b>	Several sections = 1460m of Vehicle Restraint System to be upgraded to meet current policy

Road Restraint Systems planned in 2016/17, approximate value of £180K.

## SECTION 2

# NETWORK MAINTENANCE

**Network Maintenance Manager: Arnold Hamilton**

Arnold is supported by two section Engineers



**Cindy Noble**  
 Section Engineer  
 Newry, Mourne & Down WEST  
 1 Cecil Street,  
 Newry BT34 6AU  
 Tel: 3025 3333  
 E-mail: [tninmanddwest@infrastructure-ni.gov.uk](mailto:tninmanddwest@infrastructure-ni.gov.uk)



**Stephen Duffy**  
 Section Engineer  
 Newry, Mourne & Down EAST  
 129 Sandcastle Road  
 Seaforde, BT30 8PR  
 Tel: 4481 2612  
 E-mail: [tninmanddeast@infrastructure-ni.gov.uk](mailto:tninmanddeast@infrastructure-ni.gov.uk)

## Explanation of Maintenance Operations

### Resurfacing and Strengthening

- Roads generally fail by cracking and rutting. They usually do not fail suddenly, but gradually deteriorate due to the impact of traffic, age and weathering. Wear normally appears as either excessive permanent deformation of the whole or part of the carriageway structure, or is associated with the cracking of the bituminous layers.
- Roads are normally designed for an operational life of 20 years. During this period and beyond, there is a need for the highway authority to intervene at times to either treat or replace the top layer of bituminous material known as the "wearing course" or to provide additional depth to preserve the underlying structure of the road and extend its life.
- Resurfacing is the application of a layer of this mixed material of 40mm minimum thickness. It strengthens the road, seals it against the ingress of water, and improves skidding resistance and riding quality. The thicker the layer, the more strength imparted.
- Wearing course Bitumen Macadam (Bitmac) has an expected life of 7-12 years which can be extended by subsequent surface dressing. Bitmac is a more flexible material than Asphalt and more suitable for the deformation and movement associated with weaker underlying ground conditions.
- Asphalt resurfacing is more appropriate to more heavily trafficked roads and junctions on a more robust base. It is more expensive and has a longer expected life of 15-20 years.
- Resurfacing of existing roads can usually be carried out on top of the existing surface (overlay) but where drainage or kerb levels or bridge heights are restricted the existing surface may need to be scrapped off before the resurfacing takes place

### Surface Dressing

This process involves spraying a bitumen emulsion binder onto the existing road surface, followed by a layer of stone chippings, which is then rolled. This seals the road preventing ingress of water thus extending the life expectancy of the road and also helps to improve the skid resistance on the surface

### Slurry Sealing

This process provides similar benefits to traditional 'surface dressing'. However, it has some superior characteristics e.g. has a fast setting time and generally has no loose chippings resulting from the process. It is more expensive than surface dressing and is normally confined to urban areas.

### Micro Surfacing

This material is a cold applied bituminous material similar to slurry sealing with a relatively fast setting time. However it is designed for more demanding locations, uses larger aggregates with a high quality binder, and can be laid in two courses up to a total thickness of 20mm to allow limited surface re-shaping. Its main benefits, as with slurry sealing, are that it can be laid quickly with minimal preparatory work thereby reducing traffic disruption. It is suitable for busy urban roads and the new surface can be trafficked within 15 to 20 minutes.



## **Drainage Works**

The quick and effective drainage of surface water from the carriageway contributes significantly to the safety of the road. Improvement works carried out include the upgrading of the existing drainage facilities to ensure effective dispersal of surface water and prevent as far as possible the occurrence of standing water or flooding of the road. In many cases the provision of new drainage facilities have to be undertaken including the installation of road gullies, pipes and manholes.

## **Grass Cutting**

Grass cutting is carried out for road safety reasons rather than for amenity purposes. Previous grass cutting policy allowed for routine cutting of 1 swathe width (approximately 1.2m) twice a year in rural areas and in urban areas, five times a year across the full verge width. However, last year due to financial constraints the policy was amended and only one cut was carried out across rural and urban areas, with the exception of sightlines which were re-cut as required. Due to continued financial constraint a similar policy will be implemented this year.

## **Gully Emptying**

In previous years drainage gullies in urban areas were cleaned twice per year and in rural areas once per year. Open outlets were also cleaned once per year. However, due to financial constraints routine gully cleaning was only carried out once in all areas last year and due to further funding pressures a similar policy will be implemented this year.

## **Out of Office Assistance**

We have a call centre to deal with calls outside normal office hours. Appropriate personnel can be called upon to deal with emergencies such as flooding on roads, obstructions such as fallen trees, and clearing up after road traffic accidents. The telephone number is 028 3752 9500

## Network Maintenance - Winter Service 2016/2017

The aim of winter service is to help, as far as possible, main road traffic to move safely and freely in wintry conditions by spreading salt at the most effective times. It is vital that we cover as much traffic as possible for the available budget and criteria have been devised to identify the roads that would provide the best cost benefits.

Within Southern Division, we will have 74 staff on standby to salt main roads, helping drivers to cope with wintry conditions. Salt barns are being filled to maximum capacity in Southern Division which carries out salting in the council areas of; Armagh City, Banbridge and Craigavon Borough Council and Newry, Mourne and Down District Council.

When ice or snow is forecast, we have 31 gritters available which can salt the main network in just over three hours, a massive logistical exercise.

Because of the high costs involved, it is essential that our engineers take informed decisions and they are assisted in this task by Met Office staff and the very latest technology. There are currently 21 Transport NI maintained weather stations across Northern Ireland with an additional 4 stations maintained by the DBFO companies, and with further data provided from 10 sites in Southern Ireland.

Information on our salting activities continues to be relayed electronically to the broadcast media to ensure that the latest news on road conditions is available to motorists across Northern Ireland. Additional information, including our winter service leaflet, can be found on our website along with advice on driving in poor weather conditions.



## 2.1 Network Maintenance Schemes Proposed

### Network Maintenance Schemes Proposed 2016/17

#### Proposed Asphalt and Bitmac Resurfacing

Route No.	Road Name / Location	Area (m <sup>2</sup> )
<b>Asphalt</b>		
A0002	Tyrella Road, Ballykinler	10000
U0125	Comber Street, Satntfield	1500
U0101	Edenvaddy Road, Ballynahinch	5000
	Sloane Road, Killyleagh	1200
U6293	Ashgrove Avenue, Newry	5600
B30	Newry Road	9000
B7	Chapel Hill, Mayobridge	15000
<b>Autumn Update:</b> Additional roads propsoed		
U5160_03	Shephreds Drive, Newry	160
U5175	Lough Road Newtownhamilton	1000
U5446	Edenappa Road Jonesborough	850
U6539_11	Manse road Kilkeel	300
U2690	Ballyholland road, Newry	200
B1	Ardglass Road, Downpatrick	12500
B0175	Edendarriff Road, Ballynahinch— This proposal has been REMOVED to facilitate proposed gas main work	8000

## Bitumen Macadam

U0258	Bannaghan Road, Strangford	1040
C0308	Finnis Road, Letrim	1220
U01221	St Patrick's Way, Raholp	1500
U4356	Bannonstown Road, Castlewellan	825
U4354	Ballymaginity Road, Letrim	750

### Autumn Update:

Mill Road, Kilkeel—a proposed resurfacing scheme on this road has been delayed due to an ongoing housing development which requires considerable kerbing and service alterations. It is hoped that the resurfacing will be completed once all the road frontage works at this development have been satisfactorily completed.

### Rural Roads Initiative

Following June Monitoring, the Minister for Infrastructure earmarked £10m for the Rural Roads Initiative to address the rural roads in the worst condition thus helping to reduce a backlog of rural road resurfacing / repairs.

The improvements are targeting many short lengths of particularly poor condition, together with a number of longer resurfacing schemes of around 1km. It is estimated that around 1000 locations on the entire rural road network will be improved.

Both Section offices in the Newry Mourne and Down Council area have instructed their contractors accordingly and indeed a substantial number of schemes have already been completed across the District.

## Network Maintenance Schemes Proposed 2016/17

### Proposed Surface Dressing

Route No.	Road Name / Location	Area (m2)
U0387	Moneycarragh Road	6918
C0324	Wood Road	11289
U1127	School Road	4959
U1127	Claragh Road	8150
C0304	Hollybush Road	9964
U0148	Drumee Road	3769
B0175	Drumaroad Hill	6300
U0131	Drumaroad Hill	5434
C308	Clonvaraghan Road	8840
U4211	Carrigagh Road	7388
U4211	Carrigagh Road	8148
U4134	Drumboy Road	7411
U4324	Magheramayo Road	6700
U4324	Magheramayo Road	3250
U4328	Dollys Brae Road	7230
U4213	Dolmen Road	6932
C308	Finnis Road	4568
U4215	Ardglass Road	7308
U4215	Ardglass Road	6570
C0280	Finnebrogue Road	10521
U0354	Church Road	2006
U0354	Church Road	1440
U0350	Island Road	632
C0277	Scaddy Road	9873
U0348	Tullykin Lough Road	3534
U0353	Wallace Hill Road	5856
U0166	Cotterhill Road	2815
U0163	Drakes Bridge Road	3043
U0351	Greystown Road	10580
C0281	Saul Road	2800
U1202	Rathkeltair Road	3504
C0281	Mearne Road	1435
U1225	Mearne Road	9207
U1206	Mearne Road	2695

## Network Maintenance Schemes Proposed 2016/17

### Proposed Surface Dressing

Route No.	Road Name / Location	Area (m2)
C0281	St. Patricks Road	7925
C0281	Saul Brae	2325
U1226	Slievegrane Road	10090
U0251	Struell Wells Road	7550
C0280	Quoile Road	4800
U1222	Castle Island Road	2712
U1224	Lisboy Road	4742
U1221	Myra Road	1422
U1217	Myra Road	7473
U1221	Myra Road	1359
U0022	Park Road	1260
U1224	Saul Road	702
U1222	Ballintogher Road	4118
C0297	Ballycreen Road	2964
C0297	Ballycreen Road	2474
C0295	Middle Road	14232
U0140	Spa Road Spa	2300
U0109	Magheralone Road	10917
U0383	Cherryhill Road	7665
U0386	Broomhill Road	5070
U0184	Tullywest Road	1353
U0184	Tullywest Road	2300
U03730	Greens Road	10917
C0274	Daragh Road	7665
U0360	Drumgiven Road	4648
U6292	Monkshill Road	3140
C339	Turmore Road	5076
U6042	castle enigan road	4824
U6123	Crohill Road	6650
U6016	Shinn Road	16688
C0281	St. Patricks Road	10725

## Network Maintenance Schemes Proposed 2016/17

### Proposed Surface Dressing

Route No.	Road Name / Location	Area (m2)
U6539	Kitty's Road	3760
U6080	Cavan Road	6499
U6170	Mayo Road	6250
C330	Cross Road	5175
U6196	Mound Road	6750
U6197	Lower Dromore Road	2800
U6081	Drumnascamp Road	7455
C315	Longstone Road	10250
C365	Greencastle Road	13790
U6259	Ballynahatten Road	5139
C313	Head Road	12700
U6242	Leestone Road	7200
C315	Mission Road	3825
C317	Majors Hill	7000
U6230	Moneydarragh Road	6030
U6086	Kinghill Road	5125
U6085	Ballykeel Road	6120
U6083	Mill Road	8942
U5137	Cumsons Road	6960
U5170	Carrickacullion Road	9600
C213	Ballymoyer Road	27000
U5126	Levin Road	4665
U5175	Lough Road	7200
U5169	Coach Road	3270
U5171	Camly Road	5400
U5238	Garvagh Road	2850
U5037	Keadybeg upper	3855
U5004	The Braes	2223
U5154	Carrickcloughan	4240
U5151	Lissaraw road Resurfacing	5244
U6037	Glenhone Road	5880
U6068	Lurganahone Road	9954

## Network Maintenance Schemes Proposed 2016/17

### Proposed Surface Dressing

Route No.	Road Name / Location	Area (m2)
U5383	Lake Road, Cullyhanna	5249
U5310	Assan Road	4778
U5473	Foxfield Road	8938
C227	Dundalk Road	10530
U5457	Liscalgot Road	5760
C221	Maphoner Road	13500
U5217	Callaghans Road	4582
U5377	Drummill Road, Silverbridge	6698
U5187	Carrivekeeney Road	7686
U5182	Church Rock	4104
U5183	INF Hall Road A25 to Church Rock Rd	1200
U5184	Lowes Lane	2100
U5259	Murrays Lane	1350
U5199	Ayallogue Road	5400
B79	Fathom Line	31250
U5327	Upper Fathom Road	10302
U5295	Kellys Road	3300
U5390	Molly Road, Jonesboro	4037
U5392	Lower Molly Road	1779
U5402	Old Road, Drumintee	3039
U5439	Carewamean Road	3825
U5440	The Hip	3405
U5409	Lough Road	5730
U5266	Ballard Road, Lislea	9912
U5281	Sturgan Road, Camlough	3126
U5148	Fort Road Resurfacing	5120
C0204	Carrickananny Road	3937.5
U5087	Carrickananny Road	10386
U5085	Drumnahoney Lane	5605
U6054	Drumlough School road	6080
U6055	Drumlough cross road	3943



## Network Maintenance Schemes Proposed 2016/17

### Proposed Footway Reconstruction

#### Road Name/Location

Movilla Road, Downpatrick

River Park, Killyleagh

Lislea Park, Crossgar

Downpatrick Street, Saintfield

Eddenappa road, Jonnesborough

Maryville Park, Newry

Main Street, Hilltown

#### **Autumn Update:** Additional footways proposed

Main Street, Hilltown

Forest Park, Drumintee

Carmeen Park, Warrenpoint

## Network Maintenance Schemes Proposed 2016/17

### Proposed Drainage Maintenance Works

Route No.	Road Name / Location	Route No.	Road Name / Location
U0160	Drumbuck Rd, C'wellan	C0323	Leitrim Rd Leitrim
U1202	Rathkeltair Rd D'patrick	U0245	Quarter Road Ardglass
B0180	Carnacaval Rd Maghera	U0246	Ballyclander Rd D'patrick
U0144	A'finn Road, Castlewellan	U0309	Tobbercorran Rd D'patrick
U4220	Macinish Rd C'varnaghan	U0377	Templeburn Rd Raffery
U6025	Donaghmore road, Newry	U5500	Dungormley Estate, Newtownhamilton
U6210	Ballinran Road, Kilkeel	B1123	Drumintee Road, Drumintee
C313	Head Road, Kilkeel	U5076	Crabtree Hill, Bessbrook

#### Autumn Update: Additional drainage maintenance works proposed

U5189	Gordons Lane	U5195	Seavers Rd at Murrays Crossroads
U5076	Crabtree Hill	A2	Killowen Rd
U6103	Crossan Road	U5184	Lowes Lane, Camlough
U5392	Lower Molly Rd	C339	Old Newry road
U5266	Ballard Rd		

## SECTION 3

# NETWORK DEVELOPMENT

**Network Development Manager: James Kelly**

James is supported in Newry, Mourne & Down by the following staff



**Ciaran McKenna**  
**Senior Network Development Engineer**  
Marlborough House  
Central Way  
CRAIGAVON  
BT64 1AD  
**Tel: 0300 200 7892**  
**Email: [tnindcraigavon@infrastructure-ni.gov.uk](mailto:tnindcraigavon@infrastructure-ni.gov.uk)**

Ciaran's team is responsible for the Newry and Mourne area



**Heather Bradley**  
**Senior Network Development Engineer**  
Rathkeltair House  
Market Street  
DOWNPATRICK  
BT30 6AJ  
**Tel: 0300 200 7892**  
**Email : [tninddownpatrick@infrastructure-ni.gov.uk](mailto:tninddownpatrick@infrastructure-ni.gov.uk)**

Heather's team is responsible for the Down area

## 3.1 Network Development Schemes Proposed

### Network Development Schemes Proposed 2016/2017

#### *Minor Works*

#### **Vianstown Road—Bishops Brae, Downpatrick**

This scheme aims to provide improved visibility at this junction and improvements to the junction radii and localised carriageway widening.



Work is scheduled to be carried out during the 2016/17 financial year, subject to the availability of finance and successful land acquisition.

#### **Autumn Update:**

Land negotiations are at a very advanced stage and work is scheduled to commence in early November 2016.

#### **Developer Led Schemes**

Progress on the following schemes will remain on hold until the full extent of related private developer proposals is known. The schemes will be reviewed annually for consideration for inclusion on future programmes.

**U6217 Mill Road, Kilkeel** - Footway link along Mill Road, Kilkeel.

**U6539 Kitty's Road, Kilkeel** - Junction Visibility improvement and footway provision.

## Network Development Schemes Proposed 2016/2017

### *Minor Works*

#### **Kingsmill Road—Drumnahunsion Road junction**

This scheme aims to provide improved visibility by removing the crest at this junction and improvements to the junction radii and localised carriageway widening.

Design work is substantially complete to allow land negotiations to commence.



Work is scheduled to be carried out during the 2016/17 financial year, subject to the availability of finance and successful land acquisition.

#### **Riverside Crescent, Bessbrook – Road Widening**

This scheme, to assist traffic progression within Riverside Crescent by locally widening the existing carriageway and includes alterations to existing utilities equipment.

#### **Autumn Update:**

Works were completed by end of May 2016.

## Network Development Schemes Proposed 2016/2017

### Minor Works

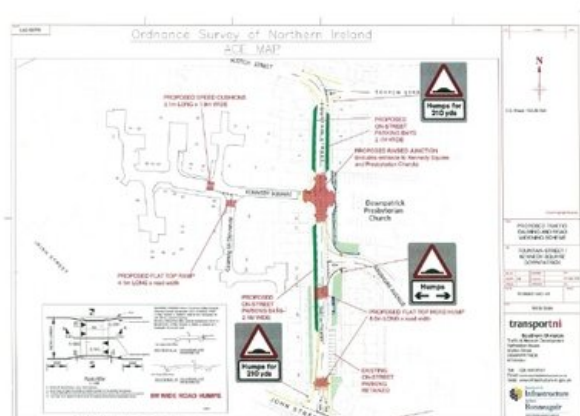
#### Collins Corner, Downpatrick – Proposed Junction Improvement

This scheme, to improve pedestrian measures and traffic progression through the junction, was identified for delivery in 2015/16. However a geotechnical survey of the hospital site and existing embankment has resulted in a revised design being required. Design work is continuing to minimise land requirements and address topography issues to secure a suitable design.

#### Autumn Update:

Further issues have arisen with ground conditions at this site and the scheme has been postponed in favour of Fountain Street, Downpatrick

#### Fountain Street, Downpatrick — road widening and traffic calming



This scheme, to improve traffic progression, will provide road widening with formalized 'on-street parking areas' for local residents on both sides of the street and traffic calming measures in the form of road humps. These proposals were included in the consultation carried out as part of the Transportation Review. As part of the traffic calming legislative process further consultation has been completed with local residents, including residents in Kennedy Square.

The formal Notice of Intention to carry out the works is due to be published in local papers in October 2016. On satisfactory completion of the legislative process, the aim would be to deliver the scheme within the current financial year.

## Network Development Schemes Proposed 2016/2017

### *Pedestrian Measures—Footways*

#### **A24 Newcastle Road, Drumaness**

This scheme involves the construction of a 260 metre infill footway link to improve accessibility and road safety for pedestrians along a stretch of the main A24, between Curry's Corner and Rice's Corner.



#### **Autumn Update:**

Works on site and due to completed before end of 2016.

#### **Killough Road, Downpatrick**

This scheme involves the construction of a 150 metre infill footway link along the Killough Road opposite Ballymote Sports Centre. This scheme aims to improve accessibility and road safety for pedestrians. This new footway will provide a link to local amenities in the area including schools, shops and local community facilities

#### **Autumn Update:**

Remains on programme for delivery in 2016/17

## Network Development Schemes Proposed 2016/2017

### *Pedestrian Measures—Footways*

#### **A50 Castlewellan Road, Newcastle**

This scheme involves the construction of a pedestrian refuge island near to Burren Meadow. This island aims to improve the pedestrian environment at this location and assist pedestrians crossing the Castlewellan road at this location.

**Autumn Update:** Works completed Summer 2016



### *Pedestrian Measures—Controlled Pedestrian Crossings*

A new controlled PUFFIN crossing will be constructed at the following location:

**Dock Street, Warrenpoint** (in conjunction with public realm works)

**Autumn Update:** Progress is tied to the ongoing public realm works and it is hoped that the crossing can be provided in the current financial year

The existing pedestrian crossing will be upgraded to a new PUFFIN crossing at;

**Main Street, Crossgar**

**Autumn Update:** Design work is underway, it remains our intention to upgrade this crossing in the current financial year

The existing zebra crossings on the approaches to the main roundabout in Newcastle will be upgraded with internally illuminated poles to improve visibility;

**Dundrum Road, Newcastle**

**Castlewellan Road, Newcastle**

**Autumn Update:** Works are now complete and both zebra crossings have now been upgraded



## Network Development Schemes Proposed 2016/2017

### *Traffic Management - Safer Routes to Schools*

#### **Clonalig Primary School, 120 Concession Road, Crossmaglen, Co Armagh**

TransportNI plans to implement a part time speed limit of 20mph outside the school (times to coincide with drop-off / pick-up times). The necessary legislation has now been processed enabling staff to programme the works during the current financial year.

#### **Autumn Update:**

Power supply issues have delayed this scheme; however it remains our intention to deliver it in the current financial year

#### **St Joseph's Primary School, Carnacavill Road, Newcastle**

TransportNI proposes to upgrade the flashing school signs and provide enhanced road markings at this location. Delivery of this work is subject to additional funds becoming available.

#### **Autumn Update:**

New flashing school warning signs have been provided at this location. Enhanced road markings will be provided within the current financial year

New flashing school warning signs have been provided at the following sites where the existing flashing school warning signs had become uneconomic to repair:

Sacred Heart Primary School, Dundrum

St Joseph's Primary School, Ballymartin

## Network Development Schemes Proposed 2016/2017

### *Traffic Calming*

#### **A25 Dublin Road / A50 Bann Road, Castlewellan**

This scheme involves an extension of the existing 40mph speed limit further country bound on the A50 Bann Road together with the introduction of enhanced signs and red textured surfacing both on the A50 and A25. This scheme aims to further highlight the speed limit to drivers along both routes.

The legislative process to extend the speed limit on the A50 Bann Road has now been completed and it is proposed to complete this scheme during the current 2016/17.

**Autumn Update:** Works were substantially completed in August 2016

#### **B6 Killyleagh Road / Manse Road, Darragh Cross**

This scheme proposes to further enhance the 40mph speed limit with the provision of red textured surfacing and roundel road markings on the main B6 upon entering Darragh Cross Village. It is proposed to complete this work during the current 2016/17 financial year.

**Autumn Update:** Works were substantially completed in August 2016

#### **B175 Ballylough Road, Annesborough**

Due to limited funds this scheme for enhanced road markings and gateway features has been postponed until further finance becomes available.

## Network Development Schemes Proposed 2016/2017

### *Traffic Management—Carriageway Markings*

Kilclief Road, Strangford at St Malachy's Primary School – 2 No. "SLOW" road markings.

Edward Street ,Downpatrick – 1 No. "PATROL" road marking on red textured surfacing.

Burrenreagh Road, Bryansford – 2 No. white T-bar road marking.

St Patrick's Avenue,Downpatrick – 1 No. "LOADING ONLY" road marking.

A7 Downpatrick Street, Crossgar – 1 No. White T-bar road marking.

Clonvaraghan Road/Macinish Road, Castlewellan – 1 No. "SLOW" and give way markings and give way junction markings

### **Autumn Update:** Additional carriageway markings proposed

Craigmore Road, Newry - 1 No Give Way road marking.

Dublin Road at junction Glen Hill, Newry - 2 No additional directional arrows and central hatching

Glassdrumman Road Annalong - 4 No "T-bar" markings

Warrenpoint Promenade at existing pedestrian accesses - 3 No "T-bar" markings

Access to Warrenpoint Docks - 1 No "Keep Clear" marking

B8 Castlewellan Road and B8 Newry Road, Hilltown - 2 No 30mph Roundels

St Josephs High School, Crossmaglen - 1 No "School Keep Clear" road markings

A28 Armagh Road at junction Jockeys Brae Road, Newry - central ladder marking system

WIN Business Park, Canal Quay Newry - double yellow lines around the entrance.

Saint Clares Avenue Newry, at existing pedestrian accesses - 6 No "T-bar" markings

A28 Armagh Road at junction Latt Road, Newry - central ladder marking system

Charlemont Square Bessbrook - 2 No. "T-Bars" and associated white lining and hatching

Newry Accident Repair Centre, Kilbroney Street Newry - 1 No "T-bar" marking

Greenpark Road, Rostrevor - 1 No "T-bar" marking

Kingsmill Primary School - 2 No "School Ahead" road markings on red textured background

St Michael's Primary School, Newtownhamilton - 1 No "School Keep Clear" road markings

Grange Primary school Lurganconary Road, Kilkeel - 2 No "School Ahead" road markings on red textured background

## Network Development Schemes Proposed 2016/2017

### *Traffic Management—Traffic Signs*

Castlewellan Road/Park Road, Dromara – 1 No. Junction on bend to the right warning sign.

Middle Road, Saintfield – 2 No. horse warning signs with distance supplementary plates.

Leitrim Road, Leitrim – 2 No. “Playground” supplementary plates.

A25 Mill Hill/Ballylough Road, Annsborough – 2 No. junction bollards

B30 Newry Road, Creggan—Relocate 2 No Road narrows signs

Benagh Road, Newry – 2 No. “Road Narrows signs.

A2 Kilkeel Road, Annalong – Relocate “School patrol ahead” sign.

Carnagat Road, Newry – 2 No. “Daisy Hill Hospital” directional signs.

B30 Newry Road, Mullaghbane – 2 No. “Mullaghbane” directional signs

B25 Rathfriland Road, Hilltown – 2 No. “Speed camera” signs.

B8 Castlewellan Road, Hilltown – 2 No. “Speed camera” signs.

A1 Belfast Road – 2No. “No Entry” for vehicular traffic signs

A1 Old Belfast Road – 2No. “No Entry” for vehicular traffic signs

A1 Warrenpoint Dual Carriageway – 2 No. “No Entry Sign” at central crossing

A1 Warrenpoint Dual Carriageway – 1 No. “blue arrow” sign with “Dual carriageway” plate.

**We will continue our programme of replacing internally illuminated bollards with reflective bollards, thus helping to reduce energy costs**

## Network Development Schemes Proposed 2016/2017

### *Traffic Management—Traffic Signs*

#### **Autumn Update:** Additional traffic signs proposed

Hilltown - 4 No Speed Camera Signs

A2 Kilkeel Road, Annalong - Children Going to School” sign and plate

A2 Warrenpoint bound lane on carriageway at Narrow Water Castle -“No Entry” sign, “Blue Arrow” sign (610 Keep Left) and “Dual Carriageway” plate

A25 Blaney Road, Newtownhamilton - Two “Cattle Crossing” signs

Carnagat Road, Newry - Two No “Daisy hill Hospital” directional signs

A1 Belfast Road - 4 No “No Entry” and 2 No “Blue Arrow” signs

Greenan Road, Warrenpoint - 1 No “Hidden Dip” warning sign

Grange Meadows, Kilkeel - 4 No “Mini Roundabout” signs and 1 No “Give Way” sign

Creggan Bridge, Crossmaglen - 2 No “Bridge Narrows” signs

Crohill Road junction Benagh Road, Newry - 1 No Give Way sign

Benagh Road near junction with Desert Road, Newry - 1 No “Road Narrows” sign

John Martin Street, Newry - 2 No “Children Going to School” signs and playground plates

Maphoner Road junction B30 Newry Road - 1 No additional directional sign

Glassdrumman Road Annalong - 2 No “Pedestrians in the Road Ahead” with 200yds plates

Dunaval Road Kilkeel - 2 No “Pedestrians in the Road Ahead” with 200yds plates

Kildare Street, Newry - 1 No Limited Waiting plate

Donaghaguy Road, Burren - 2 “Crossroads Ahead” signs

Dunmore Hill Kennels - 2 No “Pedestrians in road ahead” signs with 200yds plates

## Network Development Schemes Proposed 2016/2017

### **Traffic Management - Accessible Parking Bay Provision**

76 The Old Mill, Killyleagh  
26 Thomas Russell Park, Downpatrick  
55 Dromore Street, Ballynahinch  
4 The Gardens, Bessbrook  
Main Avenue, Derrybeg Park, Newry

#### **Autumn Update:** Also proposed

11 Clermont Gardens, Warrenpoint.  
98 Killeavey Road, Newry.  
6 Dominican Court, Newry.  
25 Loanda Crescent, Newry.  
36 Charlotte Street, Warrenpoint.  
60 Charlotte Street, Warrenpoint.

### **Traffic Management - Accessible Parking Bay Removal**

78 John Street Downpatrick  
101, Killyleagh Street Crossgar  
52 Church Avenue Dundrum  
23 Church Avenue Dundrum  
7 Church Avenue Dundrum  
28 Church Avenue Dundrum (2No.)

#### **Autumn Update:** Additional removals include

14 Clermont Gardens, Warrenpoint.  
167 Barcroft Park, Newry.  
4 Great Georges Street, Warrenpoint

Accessible Parking bay applications will be assessed before the completion of the necessary legislative process. Successful applications are required to be notified in local newspapers offering the opportunity for the general public to submit their views.

Any objections must be fully considered before the application can progress to the legislative stage. Because of the processes involved, approved applications are required to be grouped and processed in batches on two or maybe three occasions during the year.

## Network Development Schemes Proposed 2016/2017

### *Traffic Management - Speed Limits*

Following a speed limit review of the following areas, in line with current policy, and confirmation by the PSNI that they are content with the proposals, it is our intention to progress legislation for the introduction of a 30mph speed limit at the following locations. As part of this process, a notice of intention will be published in local papers, which will offer the opportunity for the general public to submit their views on the proposals.

**Kilclief Road, Strangford** - introduction of a 30mph speed limit along the Bishops Court Road.

**Ballyhornan**— introduction of 30mph speed limits in the settlement areas of Ballyhornan, including: Ringwaddy and Tullyronan as well as along the Killard Road and Rocks Road.

**Finnis, Dromara**— introduction of a 30mph speed, within the settlement, on the B7 Rathfriland Road and Dree Hill.

#### **Autumn Update:**

Legislation has been completed and the speed limits will become operational with the erection of the necessary signs, which are due to be erected shortly.

### *Traffic Management - Traffic Orders*

#### **One way Order at Barcroft Park, Newry**

Residents requested the provision of a one-way system to assist traffic flow through Barcroft Park at a local meeting with TransportNI representatives and elected representatives. Residents explained that the street is narrow and further narrowed by parked vehicles leading to vehicle conflicts on a daily basis. Residents also carried out a consultation exercise which indicated widespread support for the introduction of a one-way system in Barcroft Park.

A formal consultation exercise was carried out during 2015 and a proposal to introduce as formally advertised in late 2015.

**Autumn Update:** Objections have been received which TransportNI are required to give due consideration before this matter can be progressed.

# SECTION 4

## NETWORK PLANNING

**Network Planning Manager: Reynold Nicholson**

Reynold is supported in Newry, Mourne & Down by the following staff



**Rowan Laughlin**  
 Development Control and Private Streets  
 Rathkeltair House  
 Downpatrick  
 Email: [RSConsultations.Downpatrick@infrastructure-ni.gov.uk](mailto:RSConsultations.Downpatrick@infrastructure-ni.gov.uk)



**Jack Robinson**  
 Section Engineer  
 Street Lighting Depot  
 Carn Industrial Estate  
 PORTADOWN



## 4.1 Development Control

### Planning Applications

In carrying out their planning functions Councils have a duty to consult a range of statutory bodies. Transport NI on behalf of the Department for Regional Development (Department for Infrastructure from 9 May 2016) has entered into an agreement with each Council to provide views and advice on roads and transportation related issues.

Transport NI in its consideration of planning applications, takes into account aspects of development which could prejudice traffic progression and safety in terms of junction capacity, access arrangements, parking standards and provision, road width, radii, gradients, drainage and sight lines. A detailed Transport Assessment may be required for larger developments where potential traffic impact may extend to road junctions some distance from the development site and where infrastructure improvements are deemed necessary as mitigation.

In the case of housing developments, the Private Streets (NI) Order 1980 is applied if a planning application includes streets which are to become public and maintainable by the Department. Development Control/Private Streets Section determines the area to be adopted, arranges for the calculation of the bond amount, supervises construction of the streets and, following satisfactory completion by the developer, completes the process for adoption into the public road network. Should the developer not complete the streets, Transport NI can take appropriate enforcement action under the Private Streets Order to ensure satisfactory completion of works funded by the bond.

Other associated Development Control work includes participating in pre-application, planning meetings, presentation of evidence at Planning Appeals and the approval of accesses onto the public road under Article 80 of the Roads (NI) Order 1993. The Section also deals with responses to property certificate enquiries.

Examples of major applications being dealt with include:

- Greencastle Ferry
- Community Treatment Health Care Centre, Newry
- Newry North Business Park
- Watsons Road, Housing Development, Newry
- Housing Developments, Saul Road, Downpatrick
- Craigmore Way Housing Development, Newry
- Old Warrenpoint Road Housing Development, Newry

### Adoptions

Transport NI adopts carriageway and footway into the publicly maintained network which have been determined as part of the planning process and constructed in accordance with the relevant engineering standards.

## 4.2 Private Streets

### Enforcement

Private Streets Section endeavours to work with developers to ensure that streets are brought up to an adoptable standard without delay. If the developer does not complete the street works or ceases trading and house building and occupancy is sufficiently advanced, then Transport NI will take enforcement action and appoint its own contractor, recovering the costs of works from the road bond under Article 13 and 15 of the Private Streets (NI) Order 1980. The Section also takes action against developers who fail in their responsibility to take out a bond.

### Roads (NI) Order 1993, Article 80

Article 80 applies to new vehicular accesses on to unclassified roads or agricultural accesses on to classified and unclassified roads. It covers proposals such as new driveway entrances and dropped kerbs and is used where planning permission is not required.

### Abandonments

Abandonments of public rights-of-way such as sections of adopted roads and Footways are procedures separate from the planning process. These involve public consultation exercise which informs Transport NI's decision to approve or reject any application.

## 4.3 Strangford Ferry

### New Ferry Project

Construction of the new ferry in the Cammell Laird shipyard on Merseyside is progressing well. The launch is planned for June 2016 and the anticipated delivery date is late August 2016.

### Infrastructure works

In preparation for the new ferry new moorings have been installed in Strangford Harbour and the slipway in Strangford has been extended. Work was completed in April 2016. During the works the ferry service operated from a temporary slipway and there was no disruption to service.

#### Autumn Update:

The ferry arrived on Saturday 8 October and was formally handed over to the Department on 11 October. There will be a period of intensive training for the crews before it goes into service in late November. The new ferry (MV Strangford II) will be used in rotation with the MV Portaferry II with both being in service when very high traffic volumes are expected. Both ferries are of equal capacity.

We plan to invite local councillors, MLAs and MPs to the official formal naming ceremony which is scheduled to take place at the end of November.

## 4.4 Street Lighting

There are over 80,000 street lights in Southern Division, of which 30% (23,000) are in the council area.

### Street Lighting Maintenance

Budget constraints have meant that the Department has faced periods of significant street lighting resource pressures over the last two years. While budget pressures still exist this year, our initial allocation for street lighting maintenance allows us to continue using our external contractors to carry out street lighting repairs at this time. However, the continuation of this service for the full year will depend on the outcome of monitoring rounds

Since April 2015, TransportNI only repairs those defective street lights reported by citizens or their representatives. In order to facilitate this process, reports of defective lights can now be made directly on line via the NIDirect website at the web address:

<https://www.nidirect.gov.uk/services/report-street-light-fault>. Reports made via this web page automatically generate a works order to the appropriate contractor to have the defect repaired.

Reports can also be made by telephone at 0300 200 7899.

Priority is given to emergency defects ie those defects posing a direct structural or electrical hazard, then to groups of lights out, groups of lights burning continuously and finally to individual lights out.

### Upgrading Schemes Proposed 2016/2017

Area	Location
Newry	Trevor Hill
Newry	Ashgrove Road
Downpatrick	Vianstown Road
Ballynahinch	Woodridge
Crossgar	Martin Court